

JMS ORGANIC OIL
SPREADS AND
PERFORMS BETTER
WITH DU-WETT

POTENT LATE SEASON PERFORMANCE ON POWDERY!



JMS

Organic Oil

APPLY WITH
DU-WETT®
FOR OPTIMUM
SPREAD AND
PERFORMANCE

Chardonnay fruit sprayed dilute
with a non-ionic surfactant



Chardonnay fruit sprayed at low water
volumes with Du-Wett Super-Spreader



**POWDERY MILDEW CAN
PUNISH GRAPES.**

With JMS Organic Oil, get the
10 second kill on powdery mildew,
but **COVERAGE IS CRITICAL.**
In independent trials Du-Wett at low
water volumes gave the best coverage
and best results at the lowest cost



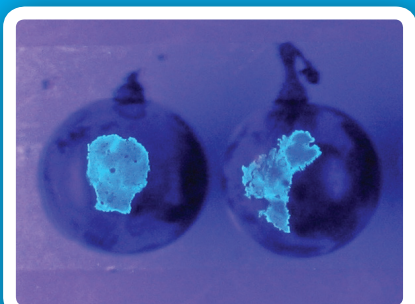
Etec
CROP SOLUTIONS

GRAPE BUNCHES ARE ‘HARD TO WET’ AND COVERAGE IS A CHALLENGE.

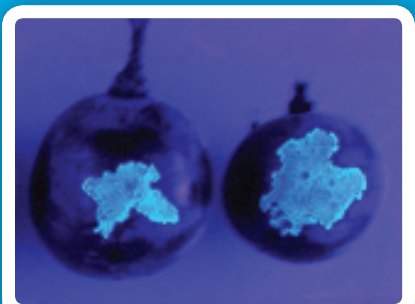
JMS Organic Oil can give excellent disease control but coverage is critical. PPCNZ undertook an independent trial on grape bunches. The same size water droplet plus JMS Organic Oil, with and without adjuvants and a fluoro dye was used on each grape berry and the spread (mm) measured.



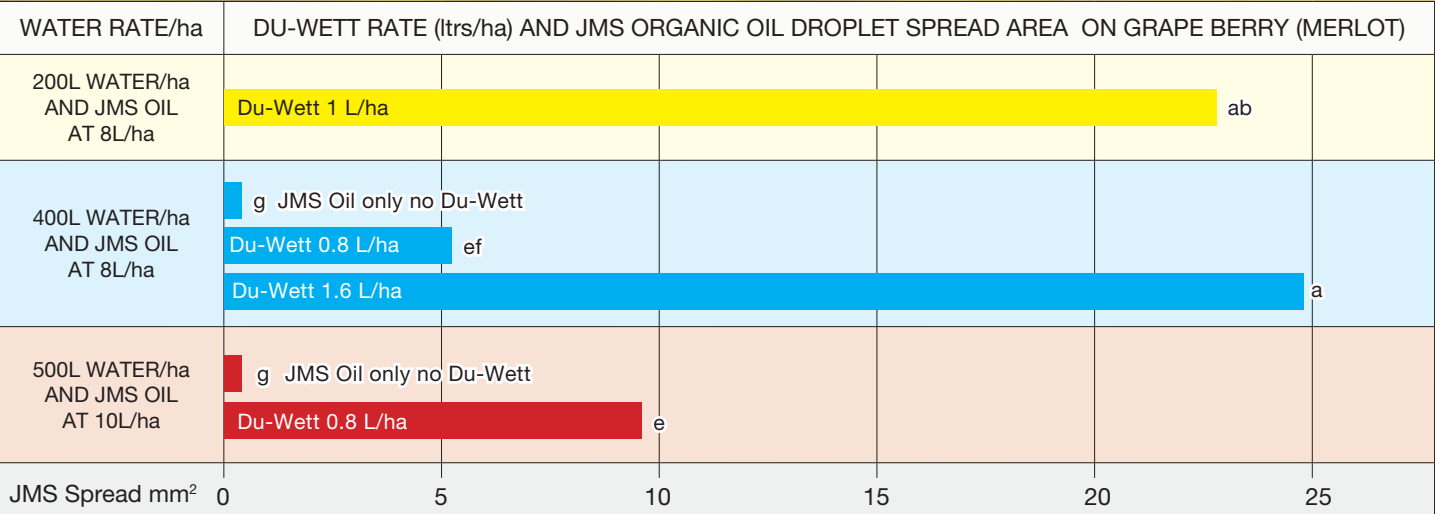
WATER RATE: 400L/ha
JMS ORGANIC OIL RATE 2%: 8L/ha
NO DU-WETT



WATER RATE: 400L/ha
JMS ORGANIC OIL RATE 2%: 8L/ha
DU-WETT RATE 0.4%: 1.6L/ha



WATER RATE: 200L/ha
JMS ORGANIC OIL RATE 3.2%: 8L/ha
DU-WETT RATE 0.4%: 1L/ha



FOR BEST LATE
SEASON POWDERY
MILDEW CONTROL
APPLY JMS OIL IN
EITHER 200L/ha AND
1L/ha OF DU-WETT
OR 400L/ha AND
1.6L/ha OF DU-WETT

JMS ORGANIC OIL GIVES OUTSTANDING POWDERY MILDEW CONTROL IN GRAPES

GETTING THE BEST OUT OF JMS ORGANIC OIL

- Spray preventively before disease is seen or at first sign of disease
- Coverage is critical due to contact action
- Best coverage is achieved in low water volume spraying with Du-Wett. Otherwise apply with moderate to high water rates.
- Use JMS Organic Oil as an integral part of a good Powdery Mildew programme. Ensure a good transition to other effective powdery products as new growth is not protected.
- Sulphur sprays may be applied 7 days before or after JMS.

COMPATIBILITY

- Do not mix with products that are not compatible with Oil. The following products require these spray intervals before and after use. **7 days** Sulphur. **14 days:** Captan, Filmstar®, Nufilm 17®, Chlorothalonil, Delan®, Fluazinam and Soaps/Detergents.

KEY INFORMATION

1. THE 10 SECOND KILL

Studies have clearly demonstrated JMS Organic Oil kills Powdery Mildew on Grapes in 10 SECONDS.

2. FORWARD COVER

JMS Organic Oil will eradicate Powdery Mildew on contact and also provide approximately 7 days forward protection early season. New growth is not protected. Once new growth has slowed JMS Organic Oil can provide forward protection of up to 10 days on mature canopies.

3. RAINFASTNESS WITH JMS ORGANIC OIL

JMS Organic Oil is rainfast for up to 18mm rain.

FEATURES

- ✓ Nil withholding period
- ✓ Physical mode of action to assist in resistance management strategies
- ✓ Biogro certified
- ✓ 99%+ unsulfonated residue (HIGH purity)
- ✓ Food grade quality mineral oil

® Registered trademarks

® JMS Stylet Oil is a registered trademark of JMS Flower Farms Inc
® Du-Wett is a registered trademark of Elliott Chemicals Ltd

© Copyright Etec Crop Solutions Limited 2016, all rights reserved. All directions for use, recommendations, use rates, compatibilities and other technical information is proprietary to Etec Crop Solutions.