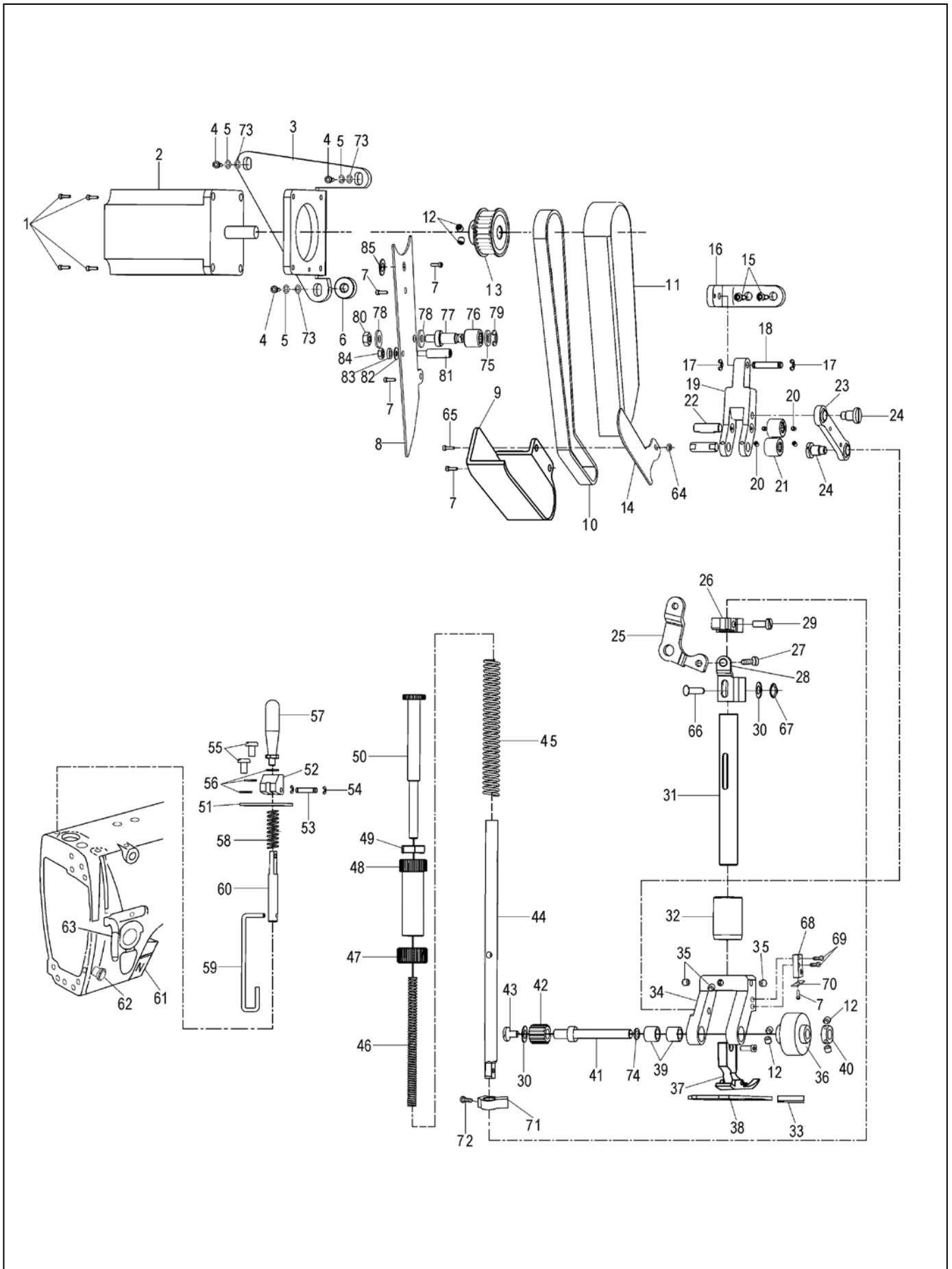


6730MD3/P DIRECT-DRIVE AUTOMATIC TRIMMING FLAT SEWING MACHINE



6730MD3/P DIRECT-DRIVE AUTOMATIC TRIMMING FLAT SEWING MACHINE

No.	Ref.No	Description	Qt	Note
1	B040609094	Screw M4x10	4	
2	237400023	Motor mechanism	1	
3	230P20001	Motor mounting seat	1	
4	B048509294	Screw M5x18	3	
5	B084050974	Washer S5	3	
6	230P20007	Cushion	1	
7	S150216011	Screw M3x6	4	
8	230P20003	Upper protective cover plate	1	
9	230P20020	Lower protective cover	1	
10	230P20019	Timing belt	1	
11	230P20002	Upper protective cover	1	
12	B098600674	Screw M4x4	6	
13	230P21000	Upper Timing pulley assy	1	
14	230P20018	Lower Protective cover plate	1	
15	S150216032	Screw M5x12	2	
16	230P20008	Swing link seat	1	
17	B062070768	Retaining ting E3	2	
18	230P20010	Pin ϕ 4	1	
19	230P20009	Swing link	1	
20	197K30005	Screw M2.5x5	4	
21	S150801142	Needle bearing HK0609	2	
22	230P20011	Pin ϕ 6	2	
23	230P22000	Ball connecting rod assy	1	
24	230P20015	Screw M5	2	
25	230P30001	Presser bar lifter lever	1	
26	230P30004	Pressing rod guide	1	
27	230P30002	Screw M5	1	
28	230P30014	Linked plank	1	
29	230100020	Screw M4x12	1	
30	217100049	Thrust ring Φ 4 (GB97-76)	2	
31	230P30018	Presser bar	1	
32	S150801153	Linear bearing H1228 (ϕ 12x ϕ 9x28)	1	
33	230P40002	Bottom plate	1	
	230P40003	Bottom plate	1	Sewing a seam material height difference
34	230P24002	Mop wheel bracket	1	
35	B098500574	Screw M5x5	3	
36	230P23001	Mop wheel	1	
37	02276	Presser foot assy	1	
38	153100002	Needle plate	1	
39	S150801152	Needle bearing HK0608	2	
40	230P20022	Washer	1	
41	230P20021	Tugboat shaft	1	
42	230P20012	Lower timing pulley	1	
43	230P20013	Screw M4	1	

6730MD3/P DIRECT-DRIVE AUTOMATIC TRIMMING FLAT SEWING MACHINE

No.	Ref.No	Description	Qt	Note
44	230P30015	Presser bar	1	
45	230P30007	Presser spring	1	
46	230P30008	Presser spring	1	
47	230P30011	Lock nut	1	
48	230P30005	Screw	1	
49	S150504007	Nut M8	1	
50	230P30006	Screw	1	
51	230P50004	Backing board	1	
52	230P50002	Cam	1	
53	230P50003	Latch	1	
54	B062080768	Retaining ting E2	2	
55	B048600494	Screw M4x6	2	
56	S150607008	Washer plain 4	3	
57	230P50001	Wrench	1	
58	022400006	Spring	1	
59	230P50006	Straining beam	1	
60	230P50005	Pull pin	1	
61	230I30000	Quick reverse switch assy	1	
62	230E00001	Clip line electromagnet	1	
63	027100005	Big hook line	1	
64	S150503002	Nut M3	1	
65	S150216028	Screw M3x6	1	
66	230P20017	Connect pin	1	
67	B062060968	Retaining ting C4	1	
68	230P30016	Guide bracket	1	
69	S150216013	Screw M3x6	2	
70	230P30017	Oil baffle	1	
71	230P30013	Guide bracket slider	1	
72	B048430498	Screw SM9/64" (3.57)X40X6	1	
73	B082050864	Spring washer 5	3	
74	BXF8617009	Washer	1	
75	S150613005	Washer 5	1	
76	S150801142	Needle bearing HK0609	1	
77	230P20024	Shaft	1	
78	B085060878	Washer 4	2	
79	B062060768	Retaining collar E4	1	
80	B089600704	Nut M4	1	
81	230P20023	Located pin	1	
82	S150607007	Washer ϕ 3	1	
83	S150601003	Spring washer ϕ 3	1	
84	S150503014	Nut M3	1	
85	B085060878	Washer ϕ 4	1	