

# KS1/2: 'Raising the bar? Bar modelling to develop children's conceptual understanding'

First Session: Wednesday 28<sup>th</sup> February 2018



**Cost: Free**

**IN17-EE1-04**

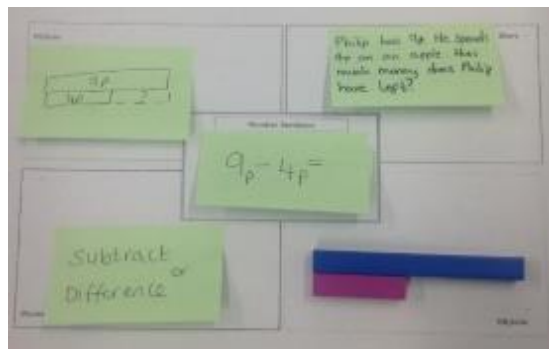
**This opportunity is open to a maximum of nine schools with two participants from each school, ideally the subject leader and another teacher.**

In 2013, the NCETM reported: 'When solving word problems, it is often not the calculation that children can't do – rather they are not sure which calculation they need to do.'

By joining this work group, participants will develop:

- Understanding about the potential of the bar model representation as a strategy to help children strengthen their ability to visualise, build conceptual understanding and solve problems.
- Knowledge of progression in use of the bar model and the skill of using secure pedagogies, for example, use of practical equipment.
- Understanding of strategies for more widely developing use of the bar model across a school.

Content related to the work group has been updated during the summer of 2017. As a result of completing a 'hands-on' gap task, which will involve trialing use of the bar model alongside children, participants will become prepared to develop an 'introduction to use of the bar model' resource. This document will be collated and support the further rolling out of bar modelling as a teaching tool across schools.



## Participants will...

- Attend two half-day work group meetings.
- Complete a gap task between the sessions.
- **Session 1 will be on Wednesday 28<sup>th</sup> February, 2018 between 9.30am and 12.00pm**
- **Session 2 will be on Wednesday 28<sup>th</sup> March, 2018 between 9.30am and 12.00pm**

**Venue:** Irchester Community Primary School, School Lane, Wellingborough, NN29 7AZ

## Enigma Maths Hub will...

- Fund the course.
- Provide a starter pack of Cuisenaire for each participant to use back at school.
- Disseminate collaborative resources.

## Work group leader: **Nathan Crook**

Driven by his passion for helping to ensure that all children access learning to the full, Nathan has supported schools across Oxfordshire and other counties in delivering high quality teaching and learning, as well as working with organisations to lead nationally accredited Continuing Professional Development (CPD) for teachers. Nathan qualified as a Maths Specialist Teacher (MaST), which also led to him becoming part of the National College for Teaching and Leadership's 'small schools making an impact' programme. Since then, Nathan has become part of the Executive of the National Association of Mathematics Advisers, which ensures that he continues to be up-to-date with agendas across the world of maths.

**To book your place click on this link:**

**<https://in17ee104raisingthebar.eventbrite.com>**

The Enigma Maths Hub, Denbigh School, Milton Keynes, MK5 6EX

Call: 01908 330690

Email: [enigmamathshub@denbigh.net](mailto:enigmamathshub@denbigh.net)

Visit: [www.enigmamathshub.co.uk](http://www.enigmamathshub.co.uk)

