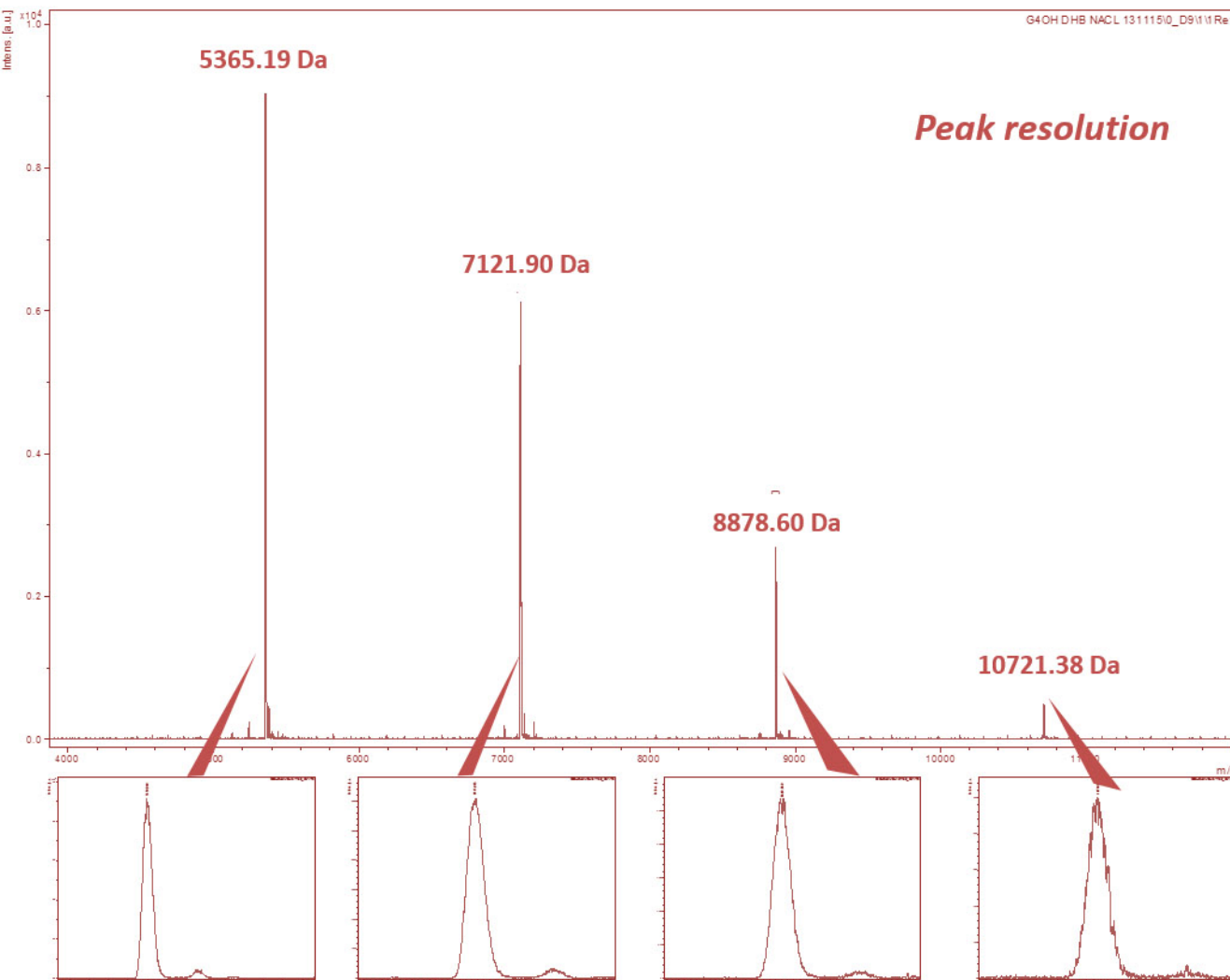


**PROTEIN LOW RANGE, 5,200 Da – 11,000 Da**



**SAMPLE PREPARATION - NEAT**

**Matrix:** 10  $\mu$ L of 10 mg/ml matrix  
**Counter-ion:** 0.5  $\mu$ L of 1 mg/ml  
**Spherical<sup>®</sup>:** 0.5  $\mu$ L of 1 mg/ml  
**Solvent:** Most organic solvents  
**Calibration method:** Dried droplet  
**Note:** Recommended ratios

**COMPATIBILITIES\***

Matrix	Solvent	Cation
DHB	THF	Na <sup>+</sup>
CHC	Ethanol	Ag <sup>+</sup>
Sinapic Acid	Water	K <sup>+</sup>
DHAP	MeOH	H <sup>+</sup>

\* Not limited to these systems only.

**ACQUISITION PARAMETERS**

IS1	25.00 kV	mode	reflector
IS2	21.45 kV	R1	26.30
lens	9 kV	R2	13.75