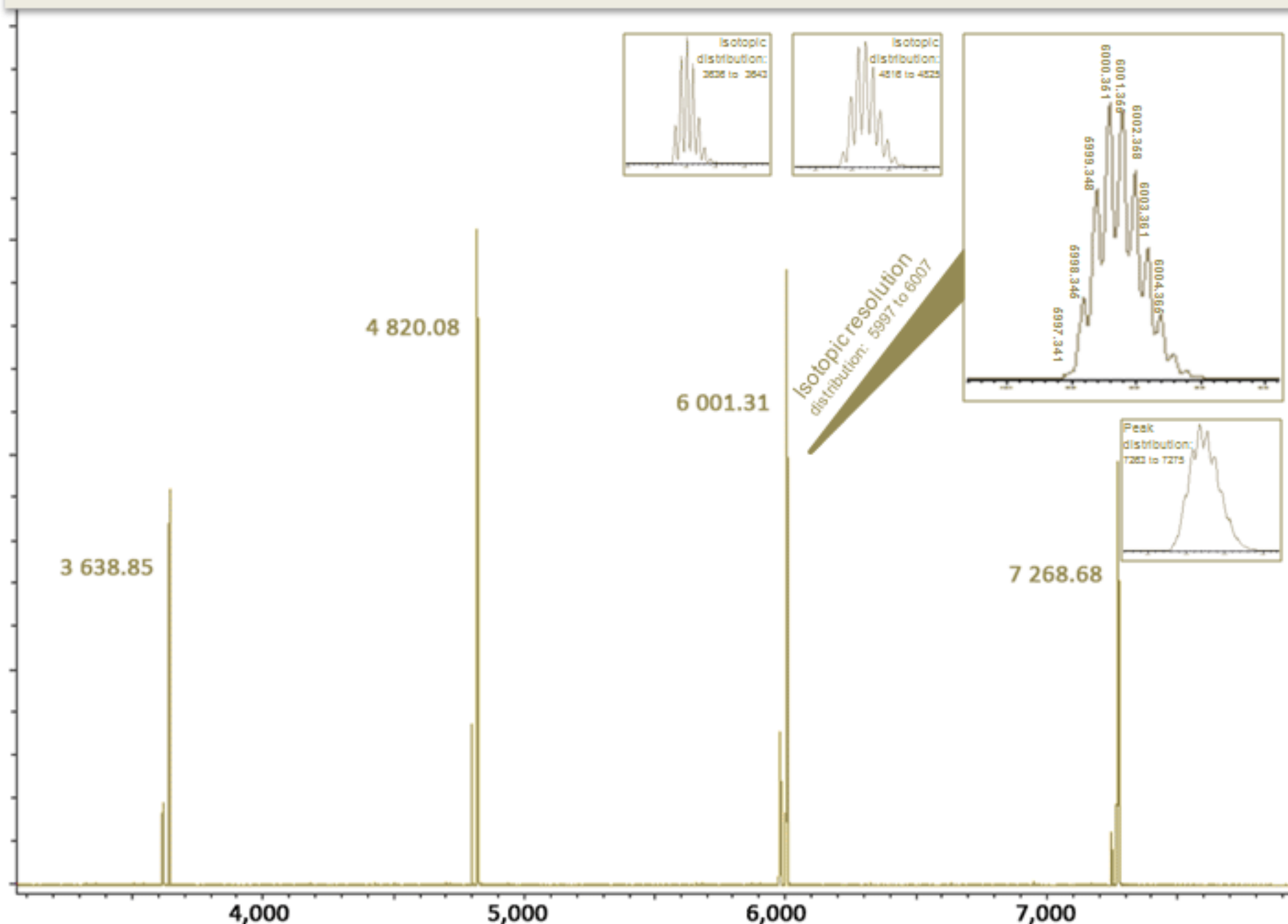


### PEPTIDE HIGH RANGE



### SAMPLE PREPARATION - MIX

**Matrix:** 9-Nitroanthracene  
**Cation source:** Na<sup>+</sup>TFA<sup>-</sup>  
**Solvent:** 50 µL of most organic solvents  
**Sample preparation:** Dried droplet (1 µL)  
**Note:** Optimized as SpheriCal Mix

### SAMPLE PREPARATION - NEAT

**Matrix:** 10 µL of 10 mg/ml matrix  
**Counter-ion:** 0.5 µL of 1 mg/ml  
**SpheriCal®:** 0.5 µL of 1 mg/ml  
**Solvent:** Most organic solvents  
**Sample preparation:** Dried droplet  
**Note:** Recommended for SpheriCal Neat

### COMPATIBILITIES

**Matrix:** DHB, HABA, Sinapic Acid, Ditrinol, 9-NA, CHCA etc.  
**Solvents:** CH<sub>3</sub>CN, THF, DMSO, Acetonitril, Ethanol, DCM, CDCl<sub>3</sub> etc.  
**Counter ion:** Na<sup>+</sup>, Ag<sup>+</sup>, K<sup>+</sup>, H<sup>+</sup>, etc.

### ACQUISITION PARAMETERS\*

IS1	25kV	mode	reflector
IS2	21.75kV	R1	26.3
lens	12kV	R2	13.75

\*for Bruker Ultraflex MALDI-ToF