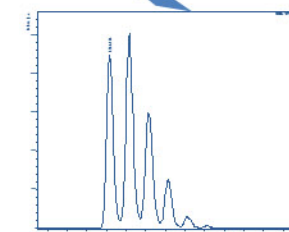
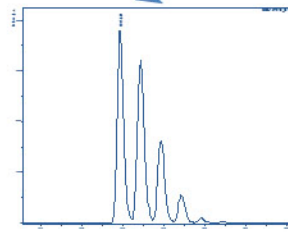
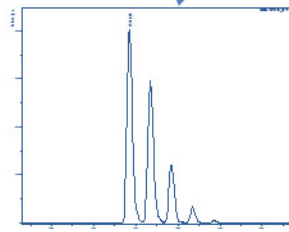
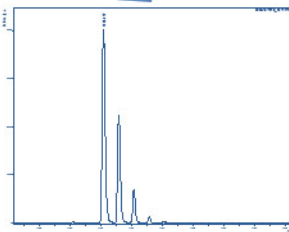
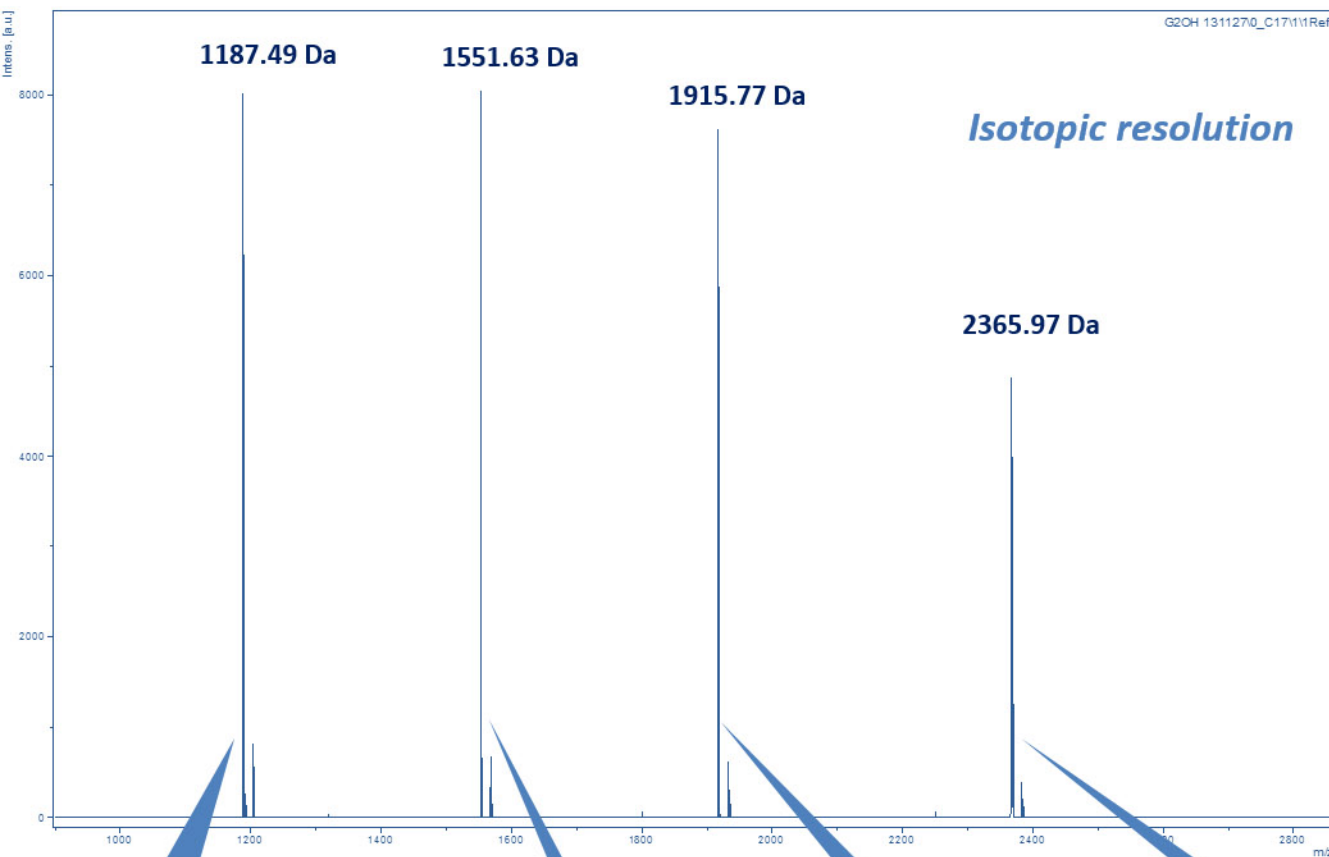


PEPTIDE MEDIUM RANGE, 1,000 Da – 2,500 Da



SAMPLE PREPARATION - NEAT

Matrix: 10 μ L of 10 mg/ml matrix
Counter-ion: 0.5 μ L of 1 mg/ml
Spherical[®]: 0.5 μ L of 1 mg/ml
Solvent: Most organic solvents
Calibration method: Dried droplet
Note: Recommended ratios

COMPATIBILITIES*

Matrix	Solvent	Cation
DHB	THF	Na ⁺
CHC	Ethanol	Ag ⁺
Sinapic Acid	Water	K ⁺
DHAP	MeOH	H ⁺

* Not limited to these systems only.

ACQUISITION PARAMETERS

IS1	25.00 kV	mode	reflector
IS2	21.85 kV	R1	26.30
lens	9 kV	R2	13.75