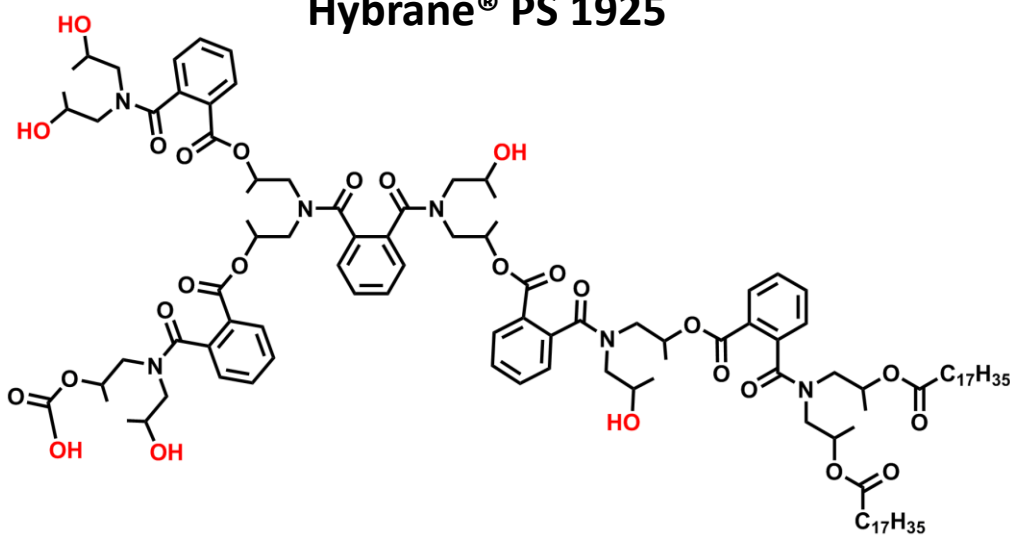




Certificate Of Analyses

Product Name:	Hybrane® PS 1925
Batch Number:	PFH-101101-PS 1925
Theoretical MW:	1900 g/mol
Molecular Formula:	$C_{12}H_{24}O_2 \cdot x (C_8H_{10}O_3 \cdot C_6H_{15}NO_2)_x$
Aver. Number of OH:	6
Storage and Handling:	Store at Room Temperature. Protect from light and moist.
Appearance:	Solid as powder or lumps
Solubility at 20 °C	
Water:	Insoluble
	<i>*Also soluble in alcohols, aromatic and chlorinated hydrocarbons</i>
	<i>For more information, please refer to the Polymer Factory Website.</i>
Analysis:	¹ H-NMR and SEC

Hybrane® PS 1925



Idealized structure

