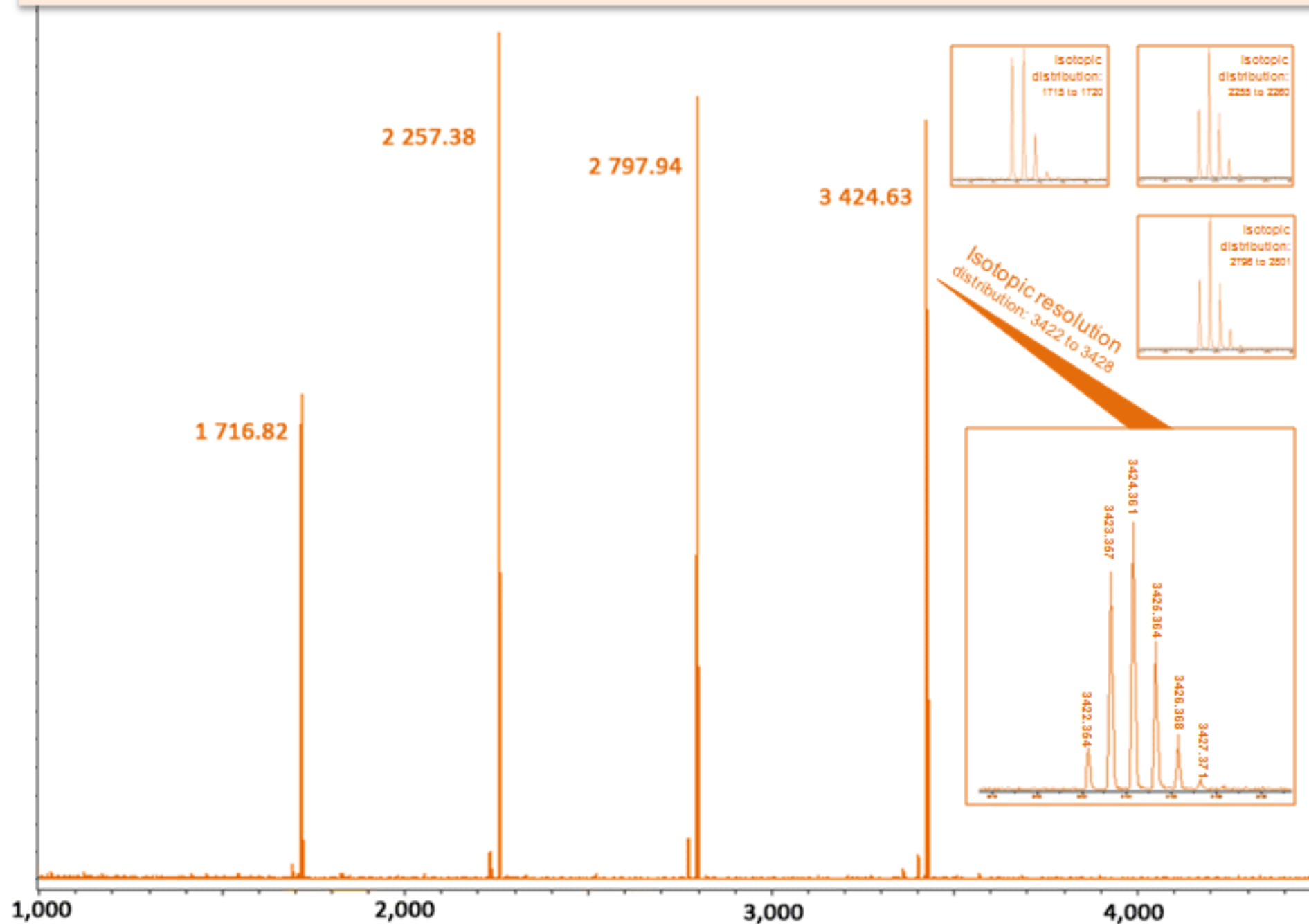


PEPTIDE MEDIUM RANGE



SAMPLE PREPARATION - MIX

Matrix: 9-Nitroanthracene
Cation source: Na⁺TFA⁻
Solvent: 50 µL of most organic solvents
Sample preparation: Dried droplet (1 µL)
Note: Optimized as SpheriCal Mix

SAMPLE PREPARATION - NEAT

Matrix: 10 µL of 10 mg/ml matrix
Counter-ion: 0.5 µL of 1 mg/ml
SpheriCal®: 0.5 µL of 1 mg/ml
Solvent: Most organic solvents
Sample preparation: Dried droplet
Note: Recommended for SpheriCal Neat

COMPATIBILITIES

Matrix: DHB, HABA, Sinapic Acid, Ditrinol, 9-NA, CHCA etc.
Solvents: CH₃CN, THF, DMSO, Acetonitril, Ethanol, DCM, CDCl₃ etc.
Counter ion: Na⁺, Ag⁺, K⁺, H⁺, etc.

ACQUISITION PARAMETERS*

IS1	25kV	mode	reflector
IS2	21.85kV	R1	26.3
lens	9kV	R2	13.75

*for Bruker Ultraflex MALDI-ToF