



Owner's manual

RCOOL

Local air conditioner

The manual made for
the following appliance:

KSZKLM603 - GRA12MHF7

3,5/3,3 kW



CONTENTS

Brief introduction	1
Safety precaution	1
Parts description	3
Accessories	4
Control panel	5
Remote controller	6
Operation	8
Installation	11
Maintenance	14
Troubleshooting	16

Thank you for choosing an RCOOL product!

Please read this owner's manual carefully and thoroughly before operating the unit! Take care of this manual for future reference.

www.rcool.hu

Note: All the pictures in this manual are just schematic diagrams, the actual is the standard.

BRIEF INTRODUCTION

This mobile air conditioner is a new generation air conditioner which is designed for being used in bedroom, study room, lobby, office, meeting room, warehouse, attics, sports hall and other entertainment room. Its characteristic of flexibility characteristic enable easy adjustment to desirable room temperature and humidity. Besides, the built-in filter can remove floating dust, purify air to create a healthy working environment.

It is designed under novelty, practicality and convenience principles to satisfy the needs for convenient, efficient and mobile small-sized air conditioner. It features easy using, no need for complicated installation

and convenient maintenance. Besides, the double control system (remote control /manual control optional) simplifies its operation.


The unit is highly competitive to other cooling capable products.

With tidy structure, multiple functions, auto-drain function and reasonable ventilation design, the unit minimizes noise and power consumption.

Aiming at harmonizing human life, our company adopts human factors into design, and produces this high efficiency mobile air conditioner.

SAFETY PRECAUTION

Your safety and safety of others are very important. We have provided many important safety message in this manual and on your appliance. Always read and obey all safety message..

WARNING  This symbol indicates the possibility of death or serious injury.

WARNING

This appliance can be used by children aged from 8 years and above and persons with reduced physical, sensory or mental capabilities or lack of experience and knowledge if they have been given supervision or instruction concerning using of the appliance in a safe way and understanding the hazards involved. Children shall not play with the appliance. Cleaning and user maintenance shall not be made by children without supervision.(Only for the AC with CE-MARKING).

This appliance is not intended for use by persons (including children) with reduced physical, sensory or mental capabilities, or lack of experience and knowledge, unless they have been given supervision or instruction concerning use of the appliance by a person responsible for their safety. Children should be supervised to ensure that they do not play with the appliance.(Except for the AC with CE-MARKING).

The air conditioner must be grounded .Incomplete grounding may result in electric shocks.Do not connect the earth wire to the gas pipeline,water pipeline,lightning rod,or telephone earth wire. After installment,earth leakage examination must be carried on through electrifying.

An earth leakage breaker with rated capacity must be installed to avoid possible electric shocks.

Don' t install air conditioner in a place where there is flammable gas or liquid. It may cause fire.

If the power supply cord is damaged, it must be replaced by the manufacture or its service agent or a similar qualified person.

SAFETY PRECAUTION

The specification of fuse is AC250V T3.15AL.

Don't put a finger, a rod or other object into the air outlet or inlet.

As a fan is rotating at a high speed, it will cause injury.

Don't touch the swinging wind vanes.

It may clamp your finger and damage the driving parts of the wind vanes.

Don't attempt to repair the air conditioner by yourself. You may be hurt or cause further malfunctions.

In lighting storm weather, please cut off the primary power supply switch in order to prevent the machine from damage.

Don't use liquid or corrosive detergent to clean the appliance and don't splash water or other liquid onto it, otherwise, it may damage the plastic components, even cause electric shock.

Don't operate the unit in the laundry rooms.

This product contains fluorinated greenhouse gases.

Refrigerant leakage contributes to climate change. Refrigerant with lower global warming potential (GWP) would contribute less to global warming than a refrigerant with higher GWP, if leaked to the atmosphere. This appliance contains a refrigerant fluid with a GWP equal to [2088]. This means that if 1 kg of this refrigerant fluid would be [2088] times higher than 1 kg of CO₂, over a period of 100 years. Never try to interfere with the refrigerant circuit yourself or disassemble the product yourself and always ask a professional.

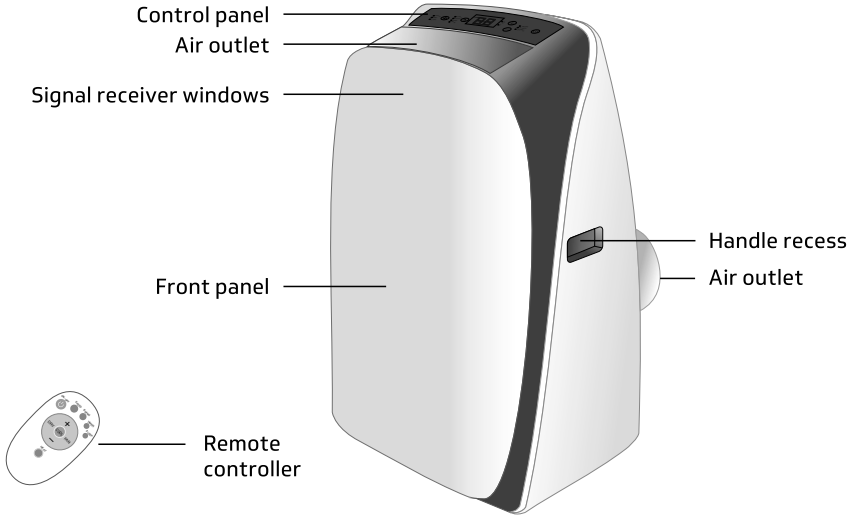
WEEE Warning

Meaning of crossed out wheeled dustbin: Do not dispose of electrical appliances as unsorted municipal waste, use separate collection facilities. Contact your local government for information regarding the collection systems available.

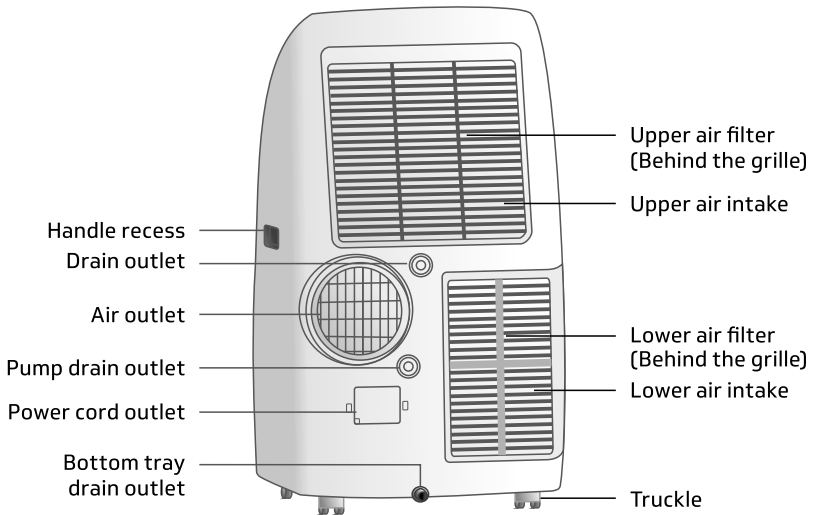
If electrical appliances are disposed of in landfills or dumps, hazardous substances can leak into the groundwater and get into the food chain, damaging your health and well-being. When replacing old appliances with new ones, the retailer is legally obligated to take back your old appliance for disposals at least free of charge.

PARTS DESCRIPTION

FRONT VIEW

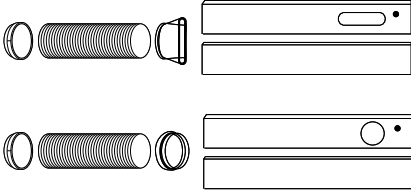
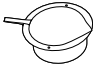






REAR VIEW



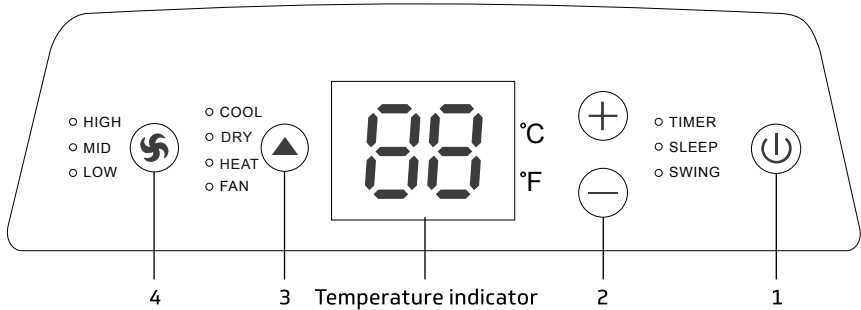
Note: The descriptions in this user manual are text and figures may have slightly difference to the promotion information and actual appliance. Please refer to the real appliance purchased, Thank you. The woking temperature range of the air conditioner is 16~35°C under cooling mode; 5~27°C under heating mode .

ACCESSORIES

Parts	Parts name	Quantity
	Exhaust hose Adaptor A and Adaptor B (flat mouth or round mouth: depending on models) Window Slider Kit and bolt	1 készlet
	Wall Exhaust Adaptor A	1 db
	Adaptor B (round mouth)	1 db
	Bolt and Nut	1 db
	Drain hose	1 db
	Remote controller, battery	1 db

Note: Some parts are optional, some models without. Please select button on the remote controller according to the related functions on the display, the other buttons of remote controller are invalid.






CONTROL PANEL



HIGH - High speed indicator
MID - Mid speed indicator
LOW - Low speed indicator
COOL - Cool indicator
DRY - Dry indicator

HEAT - Heating indicator
FAN - Fan indicator
TIMER - Time indicator
SLEEP - Sleep indicator
SWING - Swing indicator

Note: This icon is for all the buttons and display, if you buy the entity which is different from the icon, please depend on the entity which you purchase.

1.  button
Press this button to make the unit run or stop.
2.  or  button
Press one of these buttons to make the room setting temperature increase or decrease.
3.  button
Each time you press this button, a mode is selected in a sequence that goes from COOL, DRY, HEAT and FAN.
4.  button
This button is used for setting fan speed in the sequence that goes from LOW, MID, to HIGH, then back to LOW.

Note:

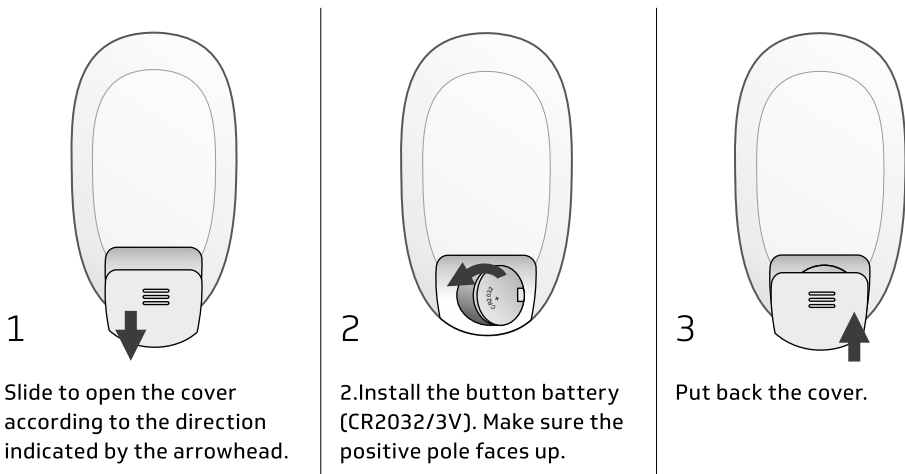
1. Timer, Sleep, Swing function, "Auto" mode and "Auto" fan speed can be selected by remote controller not by control panel.
2. Other functions on control panel are as same as remote controller's.

REMOTE CONTROLLER

Attention

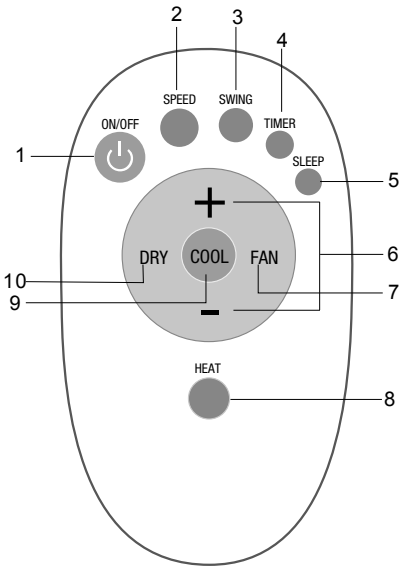
1. Aim the remote control towards the receiver on the air- conditioner.
2. The remote control should be within 8 meters away from the receiver.
3. No obstacles between the remote control and the receiver.
4. Do not drop or throw the remote control.
5. Do not put the remote control under the strong sun rays or heating devices and other heating sources as well.
6. Use the button battery (CR2032/3V).
7. Take the battery out of remote controller when you don't use it for a long time.
8. When the operation sound can not be heard indoor unit or the transmission symbol on the display screen does not flash, the battery need to be replaced.
9. If the reset phenomenon occurs when pressing the button of the remote control, the electrical quantity is deficient and the battery need to be replaced. Waste batteries should be disposed of properly.

Fix batteries



Note: The picture is general remote controller, contains almost all of the function buttons. They may be slightly different from material object (depend on model).

REMOTE CONTROLLER



1 ON/OFF

Press "ON/OFF" to turn on or off the air conditioner.

2 SPEED button

Press "SPEED" to set the wind speed (LOW, MID or HIGH).

3 SWING button

Press "SWING" to turn on or off the swing function.

4 TIMER button

When the air conditioner is turned off, press "TIMER" to set a time to turn on the air conditioner. Press "+" or "-" to set the time, and press "TIMER" again to confirm it. When the air conditioner is turned on, press "TIMER" to set a time to turn off the air conditioner. Press "+" or "-" to set the time, and press "TIMER" again to confirm it. After setting the time, press "TIMER" again to cancel the set time.

Note: After setting the time, press "TIMER" again to confirm it in 5 seconds. Without any operation in 5 seconds, the air conditioner will confirm the time automatically. Press "TIMER" after confirming the time will cancel the set time.

5 SLEEP button

In operating mode, press "SLEEP" to enter the 10-hour intelligent sleep mode. After 10 hours, the air conditioner will exit the sleep mode and restore its previous mode. In sleep mode, press "SLEEP" again, or press "MODE" or "ON/OFF" to exit the sleep mode.

Note: The sleep mode cannot be started in ventilation mode.

6 "+" and "-" button

Press "+" and "-" to regulate the temperature (the unit is 1°C) and set the time (the unit is 1h). The temperature ranges from 16°C to 32°C, and the time ranges from 1h to 24h.

7 FAN button

Press "FAN" to start the Ventilation mode.

8 HEAT button

Press "HEAT" to start the heating mode.

9 COOL button

Press "COOL" to start the refrigeration mode.

10 DRY button

Press "DRY" to start the dehumidification mode.

Note: Only when temperature reaches 16°C can we turn on the dehumidification mode, besides, the drain pipe must be installed.

OPERATION

WARNING

Failure to follow the below precaution could result in electrical shock, fire or personal injury.

1. The plug must be plugged into an outlet that is properly installed and grounded.
2. Do not use an extension cord or plug adaptor with this unit.

Before starting the unit

1. Select a suitable location, make sure the unit is near to an electrical outlet.
2. Install the flexible exhaust hose and the adjustable window slider kit.
3. Plug the unit into a right outlet.
4. Turn the unit on.

Heating operation mode

1. Press the MODE button in a sequence until the heat display is lighted.
2. Press the "+" and "-" button to setting your desired setting temperature.
3. Press FAN button to select the fan speed.
4. Press ON/OFF button to start the unit and press it again to stop.

Cooling operation mode

1. Press the MODE button in a sequence until the cool display is lighted.
2. Press the "+" and "-" button to set your desired setting temperature.
3. Press FAN button to select the fan speed.
4. Press ON/OFF button to start the unit and press it again to stop.

Drying operation mode

1. Press the MODE button in a sequence until the dry display is lighted.
2. The fan will run at a fixed speed at this operation mode.
3. Close windows and doors for the best dehumidifying effect.
4. Press ON/OFF button to start the unit and press it again to stop.

Circulation operation mode

1. Press MODE button in a sequence until the fan display is lighted.
2. Press the FAN button to select the fan speed.
3. Press the ON/OFF button to start the unit and press it again to stop.

Timer operation

1. Press the TIMER button .
2. Press the "+" and "-" button to adjust your timer time.

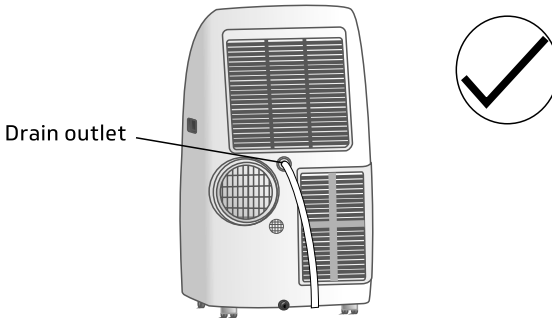
Megjegyzés:

1. "Time off" is effective only when the air-conditioner is running.
2. "Time on " is effective only when the air-conditioner is stopped.

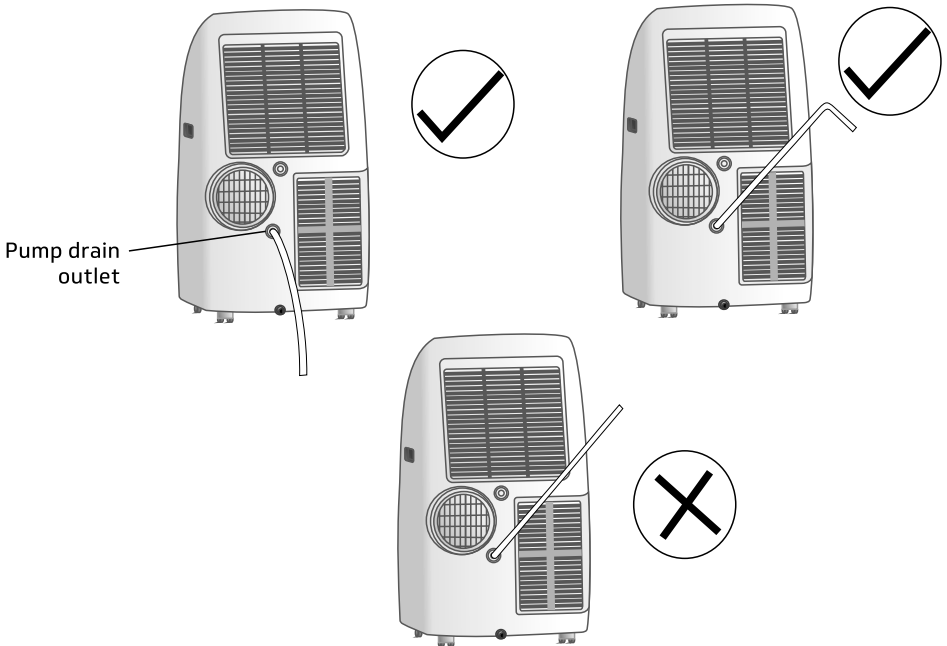
OPERATION

Water drainage

During dehumidifying mode, remove the upper drain plug from the back of the unit. Attach the drain hose to the hole. Place the other end of the hose in the drainage way or other drain areas.

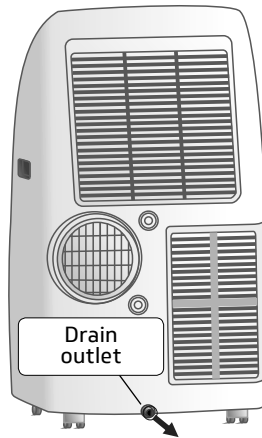


If the unit you bought has the pump drain outlet, as shown below, please drain in this way: Remove the pump drain plug from the back of the unit, attach the drain hose to the hole. Place the other end of the hose in the drainage way or other drain areas .



OPERATION

Note: Make sure the hose is secure and there are no leaks. Direct the hose toward the drain , making sure that there are no kinks that will stop the water flowing. Place the end of the hose into the drain and make sure the end of the hose is down to let the water flow smoothly. Do never let it up. When the water level of the bottom tray reaches predetermined level, the digital display area shows "P1". Carefully move the unit to a drain location, remove the bottom drain plug and let the water drain away. Reinstall the bottom drain plug and restart the machine until the P1 symbol disappears. If the error repeats, call for service.



Note: Be sure to reinstall the bottom drain plug before using the unit.

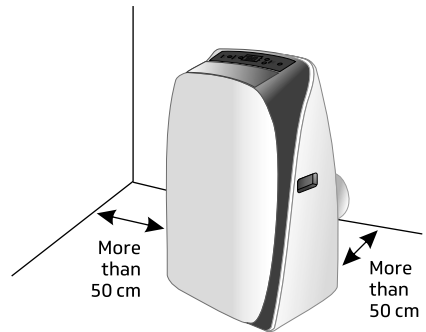
INSTALLATION

Guide of customer

- The customer should have a qualified power supply coincident with that printed on the tag of the air conditioner. Its voltage should be in the range of 220~240V.
- Must use special circuit and efficient grounding outlet matching with the plug of the air conditioner.
- If the supply cord is damaged, it must be replaced by the manufacturer, its service agent or similarly qualified persons in order to avoid a hazard.
- The appliance should be installed in accordance with national wiring regulation.
- The plug should be easily accessible after installation.
- If the fuse of unit on PCB is broken, please change it with the type of F3.15A/250V.

Select a best location

1. Install the mobile air conditioner in a flat and spacious location where the air outlets will not be obstructed.
2. A minimum clearance of 50cm from walls or other obstacles should be kept.
3. The gradient can't be more than 10 degrees with the horizontal plane while putting and using the utensil



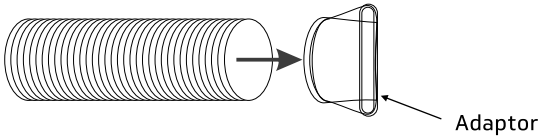
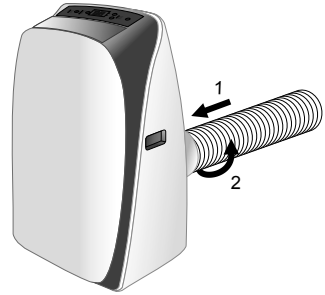
Note:

1. The air conditioner shall not be used in the laundry.
2. The plug shall be accessible after the unit is positioned.

INSTALLATION

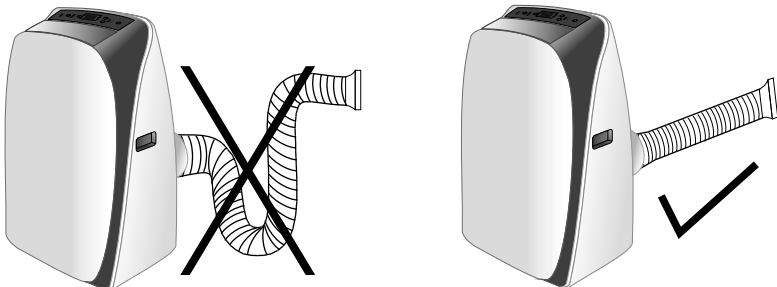
Duct mount instruction

1. Put the side of duct to the exhaust air outlet of mobile air conditioner. Fix it with unit correspondingly, then turn right. Push it downwards, make sure that it is fixed thoroughly.
2. Put the other side of the duct to adaptor.
3. Put the adaptor subassembly to a nearby window.



Note:

1. The duct can be compressed to 450mm minimum and extended to 1800mm maximum. It is better to keep the duct length to a minimum.
2. Stretching or bending the duct excessively will affect the cooling efficiency. (As the following fig. Shows)



INSTALLATION

Window kit installation

Your window kit has been designed to fit most standard vertical and horizontal window applications. However, it may be necessary for you to improve or modify some aspects of the installation procedure for certain types of window. Please refer to figure A and figure B for minimum and maximum window openings.

Figure A: Horizontal window

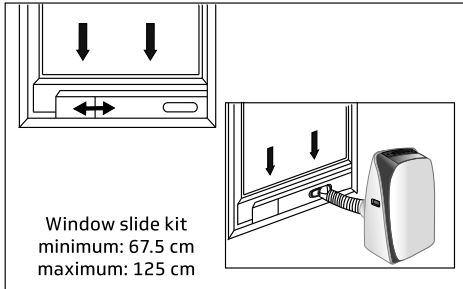


Figure B: Vertical window

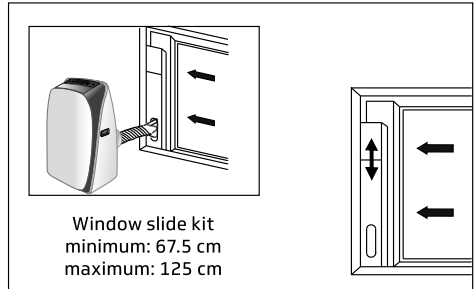
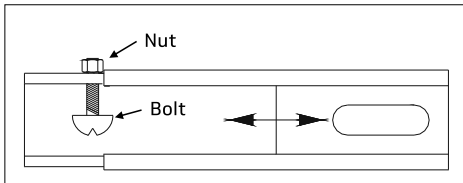


Figure C



Note: The bolt and nut are used to fix window fixing board.

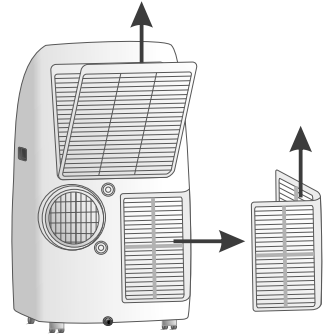
MAINTENANCE

Your new air conditioner is designed to give you the dependable service for many years. This section tells you how to clean and care for your air conditioner properly. Call your local authorized dealer for an annual checkup. Remember the cost of this service call is your responsibility.

Cleaning air filter

If the air filter is covered by dust, the cooling capability will be decreased. Please clean the air filter every two weeks.

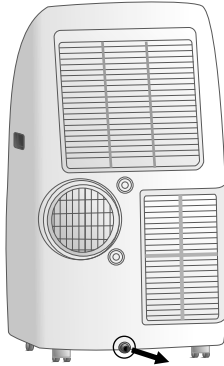
1. Turn off the air conditioner and cut off the power supply.
2. Pull out the filter cover and remove the filter from cover.
3. Wash air filter in warm soap water. Do not put air filter in the dishwasher or use any chemical cleaners. And dry filter completely before replacing.
4. Attach the air filter to the filter cover using the attachment hooks on the inner surface of the cover. Put the filter cover back to its place.



MAINTENANCE

Cleaning the unit

1. For the purpose of safety, please turn off the air conditioner and cut off the power supply .
2. Wipe the unit with dry cloth .
3. If the unit is very dirty, please wipe with wet cloth dipped by cold water .



Note: if you don't use the unit for a long time, please pull out the rubber plug to drain the inside water out referring to right figure.

WARNING

Do not use gasoline, benzene, thinner or any other chemicals, or any liquid insecticide on the air conditioner, as these substances may cause flaking off of the paint, cracking or deformation of plastic parts .

Never attempt to clean the unit by pouring water directly over any of the surface areas, as this will cause deterioration of electrical components and wiring insulation.

Never use hot water over 40°C (104°F) to clean the air filter.

TROUBLESHOOTING

To save the cost of a service call, please try the suggestions below to see if you can solve your problem without outside help.

Air condition will not operate	
Causes	Solutions
<ul style="list-style-type: none">• The power switch is released.• Power supply failure.• The fuse is burnt.• It doesn't reach the setting time for starting up.	<ul style="list-style-type: none">• Switch on the power.• Wait for the recovery of power supply.• Replace the fuse.• Wait or eliminate the original setting.
Unit doesn't start when pressing ON/OFF button	
Causes	Solutions
<ul style="list-style-type: none">• It is not three minutes after switch off.• Room temperature is lower than the setting temperature.	<ul style="list-style-type: none">• Wait three minutes.• Reset the temperature.
The wind blowing out, but the cooling effect is bad	
Causes	Solutions
<ul style="list-style-type: none">• Mistakes in temperature setting.• The air filter is blocked by dust.• The air inlet or outlet of machine is blocked.• Turn the air conditioner on in very hot room.• Cooling capacity is insufficient.• The doors or windows are open.	<ul style="list-style-type: none">• Set a proper temperature, setting temperature should be lower than ambient temperature.• Clean the air filter.• Remove the obstruction.• Allow additional time to remove stored heat from walls ,ceiling, floor and furniture.
Noise or vibration	
Causes	Solutions
<ul style="list-style-type: none">• The ground is not level or not flat enough.	<ul style="list-style-type: none">• Place the unit on a flat, level ground if possible.

PARAMETERS

Rated cooling capacity	3500 W
Rated heating capacity	3300 W
Rated dehumidifying capacity	1,2 kg/h
Rated power consumption cooling	1340 W
Rated power consumption heating	1100 W
Rated running current cooling	5,95 A
Rated running current heating	4,88 A
Névleges feszültség	220-240 V~/50Hz
Max. Input power	1600 W
Max. Input current	7,1 A
EER cooling	2,6 W/W
COP heating	3,0 W/W
Power supply source	220-240 V /1Ph /50Hz
Refrigerant	R410a
Refrigerant charged	0,46kg
Air flow volume	410 m ³ /h
Noise level	< 62 dB(A)
Unit weight	32,5 kg
Net dimension (width×depth×height)	480×400×795 mm
Packaging dimension (width×depth×height)	520×450×890 mm

Contains fluorinated greenhouse gases covered by the Kyoto Protocol.

GWP: 2088 → 0,96t CO₂

Hermetically sealed.



Thank you for choosing an RCOOL product!

www.rcool.hu

