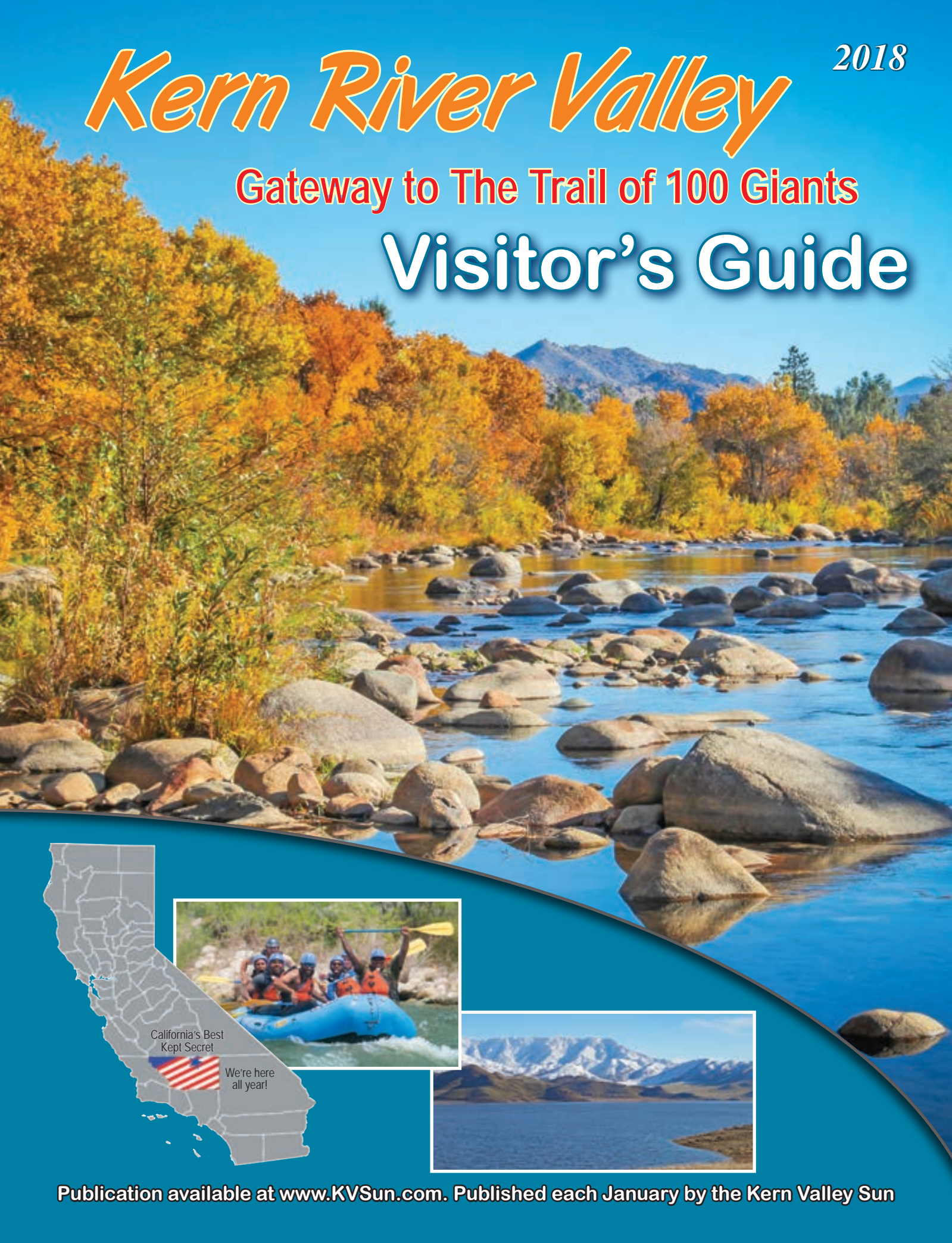


Kern River Valley

2018

Gateway to The Trail of 100 Giants

Visitor's Guide



Publication available at www.KVSun.com. Published each January by the Kern Valley Sun

Great
Family Trips!

KERN RIVER WILD & SCENIC



Just 3 hours north of
Los Angeles in Kernville, CA

1-hour to 3-day Whitewater Raft Trips
April-September

Top-rated Whitewater
Kayak School for
Beginners to Advanced

Paddle Board & Kayak Tours
on Isabella Lake

Tubing rentals and shuttles available.

Largest Whitewater Store in Southern
CA. A full selection of quality
outdoor clothing and river gear.
Watershoes, t-shirts, souvenirs and
more. On-line Store orders see
www.sierrasouth.com

On-line reservations available
www.sierrasouth.com or call ahead to
pre-book.

Walk-ins always welcomed.

NUN BETTER!

SIERRA  **SOUTH**
MOUNTAIN SPORTS

For more info & reservations: 800-457-2082 or 760-376-3745

www.sierrasouth.com • email: paddle@sierrasouth.com

Follow us on:



Outdoor fun
for the entire family!



Hike, Fish, Float...



or just Relax.

Cottages – RV Rentals – Camp Sites
Fully Furnished House

Full Hookups Available
Hot Showers • Cable TV and Limited Wi-Fi

**KERN RIVER SEQUOIA
RV RESORT**

www.KRSRVResort.com



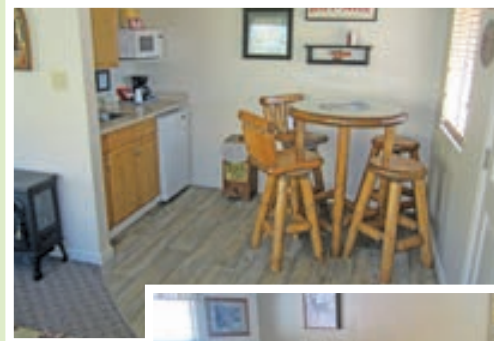
For Reservations Call
760-376-6119

13801 Sierra Way • Kernville, CA 93238

Open all year!



Fish from our banks!



Wi-Fi & DirecTV

- 14 Sparkling Rooms
- Air Conditioning
- Cable TV
- Refrigerators
- Phone
- NO Smoking or Pets



16123 Sierra Way • Kernville, CA 93238
760-376-2535 • www.sequoialodge.net

The Kern River Valley

Welcomes You

One of California's best kept secrets may no longer be a secret at all. With some of the finest areas for recreation, relaxation and astonishing beauty, the valley is nestled among the majestic Southern Sierra Nevada mountains. Only hours from busy city living, the Kern River Valley is waiting to share all it has to offer.

Surrounded by mountain peaks that soar to 10,000 feet and higher. The North Fork of the Kern River courses through one of the most breathtaking canyons in California. The South Fork of the Kern River weaves through ranchland and hosts one of the largest riparian areas in the state. Visit Isabella Lake, for the best of the best in fishing and boating.

As you leave city life behind, a trip to the Kern River Valley will send you back in time with working cattle ranches, livestock grazing among endless vistas of farmland, and more stars than can be imagined hanging just above the grand mountain peaks in the night sky.

No matter what is on your agenda during your stay, the Kern River Valley has it covered. For land based visitors, the surrounding area has numerous offerings: hiking, golfing, hunting, sport shooting, horseback riding, birding, mountain biking, gold panning, rock climbing, camping, skiing, snowmobiling, antiquing, wildflower viewing and

photographic possibilities. There is plenty to keep you busy. If you prefer spending time on the water, the Kern River and Isabella Lake are perfect choices. They offer fly fishing, whitewater rafting, kayaking, stand-up paddle boarding, fishing, boating, windsurfing, kiteboarding, parasailing, sailing, waterskiing, tubing, and swimming.

With blue skies and clean, clear air, you will want to breath deeply and forget city life as you enter the Kern River Valley.

The Kern River Valley is like another world, yet it is so very close, just three hours from Los Angeles and one hour from Bakersfield and Ridgecrest. The two main ways to enter into the valley are from the west, via Bakersfield on Highway 178, through the scenic Kern River Canyon, or from Highway 14 to Highway 178 and then over the historic Walker Pass from the east.

This visitor's guide is designed to be a user-friendly overview of the valley, with three main sections – Activities, Destinations and Events. There is a detailed map in the center.

The Kern River Valley Visitor's Guide is produced by the area's weekly newspaper, the Kern Valley Sun. For more information, visit the Sun's website at www.KVSun.com.

Table of Contents

About the Cover..... 4	Road Trip Map 16	Keysville
Calendar of Events..... 6	OHV Riding & Four-Wheeling	Peppermint Creek Falls
Activities..... 8	Riding Trails	Dry Meadow Creek
Kern River 9	Hiking Trails	South Creek Falls
Whitewater Rafting	Mountain Biking	Brush Creek
Kayaking	Local Trails 19	Fish Hatchery
Stand-Up Paddleboarding	Wildflowers	Native American Cultural Center
Fishing	Fishing Derby Information..... 23	Kern Valley Museum
Isabella Lake..... 11	Valley Map 24	Kern River Preserve
Boating	KRV Chamber Information..... 26	Gateway to the Sequoias
Personal Watercraft	Dirt Bike Riding Maps..... 22	The A. Brown Mill
Windsurfing & Parasailing	Antiquing	South Fork Ranches
Sailing	Birdwatching	Scenic Sierra Way
Water Skiing	Stargazing	Cottage Grove Cemetery
Stand Up Paddle Boarding	Snow Play	Blackrock Ranger Station
Kayaking	Snowmachining & Cross Country Skiing	Kennedy Meadows
Golfing	Skiing, Snowboarding, & Snow Tubing	CA Hot Springs Resort
Horseback Riding	Destinations 29	Sherman Pass Road
Hunting	Silver City Ghost Town	Pacific Crest Trail
Fly Fishing	Pearl Harbor Memorial	Domeland Wilderness
Fishing		Events..... 38
Camping		Directory Guides..... 42
Sport Shooting		Kernville Chamber Information..... 46
Rock Climbing		
Trail Map..... 16		

Publisher..... Marsha Smith
 General Manager..... Natalie Brown
 Managing Editor Ashley Loza
 Assistant Editor..... Shannon Rapose
 Classified Manager..... Christina Denys
 Production Lead Sarah Roofener
 Production Assistant..... Seth Flke
 Advertising Sales..... Michele Lynn
 Advertising Sales..... Tam Hartman
 Sports Editor..... Ray Conner
 Circulation..... Steve Rinehart

About the Cover

The fall river photo is called "The Sanctuary" photographed by Michael Cuffe. You can find more of his photography at michaelcuffe.com. Photos of snow above Lake Isabella was taken in January 2017. The Big Meadow photo was submitted on the adventure rider blog site: advrider.com

Designed by: Sarah Roofener
Photo credit: Michael Cuffe
Photo credit: Sarah Roofener
Photo credit: advrider.com

Kern River - Pack It In, Pack It Out

Keepers of the Kern is a grass roots, non-profit organization that is dedicated to bringing the Wild and Scenic Kern River to a condition that ensures environmental and human health. It is apparent the best way to describe the difference between 'trash and treasure' is PRIDE!

The Wild and Scenic Kern River is one of the finest rivers in the state of California and it needs to be protected. Keepers of the Kern have seen a need for just this and have created an organic movement from the ground up to address an extremely pressing issue. That issue being abuse and overuse by the public who recreate here. The ecological balance has been damaged through the careless and neglectful actions of those who do not care for and respect the land. The Kern River Valley exists because of its waters and without those waters, the river and its people could fall to a level of economic depression and excess pollution.

Keepers, and their dedicated volunteers, logged in over 3,000 volunteer hours and traveled well over 5,000 miles throughout this past year. The upper Wild and Scenic Kern River, Keyesville, Isabella Lake and numerous roadsides have been carefully and passionately cleaned of trash, garbage, human waste, and graffiti on a regular weekly basis.

The efforts of Keepers of the Kern encapsulate the vision to "think global, act local." The unique aspect of the organization is the creation of something where nothing existed before, and it is working! The continued partnership with the U.S. Forest Service, Bureau of Land Management, Kern River Conservancy and many others guarantees a bright future of continued success and growth. People are noticing the transformation that is taking place despite hurdles and other obstacles that have shown themselves as we clean it up...one bag at a time!

Keepers of the Kern had a very successful 2017 and are looking forward to an even better 2018 thanks to so many sponsors, supporters, and dedicated volunteers. Keepers have worked alongside local businesses, governmental agencies, and the communities of the Kern River Valley to restore and assist in maintaining the richness of this magical area.

The movement Keepers has embarked upon is receiving an increased awareness and participation every day. The number of volunteers has increased, and the cooperative effort has brought about the willingness of campers of all ages to jump right in to join the groups as they make their

appearance with trash bags and pickers in hand. All it takes is one to begin the process of giving those who recreate here in the Kern River Valley a better foundation on how to care for the land which belongs to all of us.

In order to ensure the health of our river and its land, it is going to take everyone, working collectively and with passion. By doing so, it will truly be an exciting and wonderful experience brought about by the combination of love and respect. We must remain reunited in protecting the diversity and delicate biological environment that surrounds us.





MISSION STATEMENT

Keepers of the Kern is dedicated to protecting, restoring, preserving, and enriching the quality of diversity and the delicate biological environment surrounding the Kern River corridor. We are committed to promoting education, to monitoring and to increase awareness in order to prevent further damage to the water and the environment. We will be good stewards and will engage in compassionate action to improve and maintain the health of the Kern River by bringing about changes necessary such as to increase management practices and reduced public abuse and overuse.

Going into our fifth year, the trash warriors continue to right the wrong done to our beautiful Wild and Scenic Kern River. With our adopt a campground program in effect the problem has improved but the trash, garbage and human waste are still a huge problem. We continue the fight collecting tons from the river, the shores of Isabella Lake and the Historic Keyesville area. Come join us... VOLUNTEER!



"One Person Can Make A Difference... Together We Can Make It Right!"

Payable to:
Keepers of the Kern, Inc.
PO Box 655
Kernville, CA 93238



keepersofthekern@gmail.com
www.keepersofthekern.org
keepersofthekern - FB pg
1-760-376-2963 / 1-360-324-8178

Events Calendar 2018

The dates of these events are subject to change without notice. Changes and additions are expected. To avoid disappointment, call the Kernville Chamber of Commerce at 760-376-2629, the Kern River Valley Chamber of Commerce at 760-379-5236, or the event phone numbers listed below prior to your stay in the Kern River Valley.

For more events and up to date information, check the Kern Valley Sun calendar at KVSun.com

January

- **Whiskey Flat Days Kick-Off Dinner:** Social, BBQ Dinner & Program. Live music, square dancing, and more. Purchased Reservations required. For more information, please call Kernville Chamber at 760-376-2629.
- **Annual South Fork Valley Winter Bird Count:** For more information, please call Denise LaBerteaux 760-378-4278 or 760-382-1260
- **Man and Woman of the Year:** Paradise Cove Lodge • Awards and installation. For more information, please call KRV Chamber at 760-379-5236.
- **Firefighter Appreciation Dinner:** January 29. Paradise Cove Lodge • Honoring local firefighters. Social, Dinner & Program. For more information, please call KRV Exchange Club 760-379-3667 ext. 15 or 760-379-7785

February

- **Whiskey Flat Days:** February 16-19 • Kernville (a.k.a. Whiskey Flat). Join us when Kernville reverts to its old name "Whiskey Flat" for four nostalgic days of fun for the entire family. Parade, Wild West Daze Rodeo, Wild West Encampment, Carnival Rides, Frog Jumping Contests, Whiskey Flat Mayor Contest, Food & Craft Booths, Epitaph, Costume & Whiskerino Contests, Line Dancing, Clowns, Gold Panning, Wood Carving, Pet Parade, Blue Grass & Country Western Music, Art Show, Gunfighter Skits, Melodramas, Kids Activities, Games, & much more! For more information, please call Kernville Chamber at 760-376-2629
- **Annual All-Valley Jeanette Rogers-Erickson Heart Walk:** February 24 • Kern Valley High School, Lake Isabella. For more information, call 760-379-5257 ext. 24, visit www.KVHD.org or email deborahhess@kvhd.org.

March

- **Ridgecrest Daily Independent Home Show:** Desert Empire Fairgrounds • Free admission, free parking. For more information, please call 760-375-8000.
- **Casino Night:** KRV Senior Center, Lake Isabella • Entry Fee includes dinner. For more information, please call KRV Chamber at 760-379-5236.
- **Law Enforcement Appreciation Dinner:** Honoring local law enforcement. Social & Dinner. For more information, please call KRV Exchange Club 760-379-3667 ext. 15 or 760-379-7785.
- **Kern Valley Community Orchestra Concert:** March 11. Cerro Coso room G • For more information, please call Jody Steel at 760-299-3318.
- **29th Annual Isabella Lake Fishing Derby:** March 24, 25, 26 • Enter & cast your line for a chance at over \$10,000 for the longest trout! For more information, please call KRV Chamber of Commerce at 760-379-5236.

April

- **Annual Ridgecrest Desert Wildflower Festival:** Ridgecrest • Activities include wildflower tours, lectures and programs, art, exhibits, a wildflower festival bazaar, and wine walk. For more information, call 800-847-4830 or visit www.maturango.org • Facebook: Ridgecrest Desert Wildflowers.
- **Annual Kern River Whitewater Festival:** April 28-29 • Riverside Park, Kernville. Whitewater races (slalom, downriver, raft, SUP) and Triathlon. Brush Creek Extreme. Vendors, food, live music, and a lot of fun. More info at kernfestival.com, Facebook: Kern River Festival or Kern River Council 760-376-3745.
- **Nuui Cunni Spring Gathering:** Nuui Cunni Native American Cultural Center • 2600 Hwy 155, Lake Isabella Come join us for cultural demonstrations, raffle items, silent auction, native plant sales, food, face painting, entertainment, and more! For more information call 760-549-0800, email nuuicunni@earthlink.net or visit www.nuuicunni.com.

- **Annual Trout Fest:** Kern River Hatchery, located at 14415 Sierra Way in Kernville • Introduces people to the sport of fishing and responsible angling. No knowledge of fishing required! Hands-on activities include how to clean and cook a fish and educational demonstrations. All activities are free and all gear is provided for those 15 years and under only. For more information, visit our Facebook page: Friends of the Hatchery.
- **ABA (American Bass Anglers) Bass Tournament:** Isabella Lake • One Saturday per month starting in April through September. For more information, please call Sherry Jordan at 760-417-2702.
- **China Lake and Ridgecrest Golf Tournament:** Ridgecrest • Beautiful 18-hole Naval golf course, contests. Sponsored by the City of Ridgecrest, Ridgecrest Area Convention and the Visitors Bureau at China Lake Golf Course. For more information, please call 760-375-8202.

May

- **Kern Valley Hospital Foundation's Spring Health Fair:** Kern Valley Hospital, Mt. Mesa • This community spirited event features information booths, free or low-cost health screenings, free health tips, diabetes screening, blood sugar fingerstick, nutrition guidelines and so much more. Also available will be a \$10 blood draw that includes a cardiac risk assessment, a diabetic screening and a general health panel. Must preregister too have your blood drawn. For more information, call Debbie Hess at 760-379-5257, ext. 24.
- **Annual Kern River Valley Classic Car Show:** Kernville • For more information, please call Rotary Club at 760-417-1008.
- **Annual Sirretta Street Swap Meet & Sale:** For more information, please call Kernville Chamber of Commerce at 760-376-2629.
- **Kern River Valley Museum History Days:** Kern Valley Museum in Kernville • A day of entertainment and history. For more information, please call 760-376-6683.
- **Kern Valley Community Orchestra Concert:** May 19. Cerro Coso room G • For more information, please call Jody Steel at 760-299-3318.
- **Annual Spring Arts and Crafts Fair:** Circle Park, Kernville • For more information, please visit Kern River Valley Art Association at krvaa.org.
- **Book of Golden Deeds Dinner:** Paradise Cove Lodge • Social, dinner, followed by program honoring recipients. For more information, please call KRV Exchange Club at 760-379-7785 or 760-379-3667 ext. 15.
- **Household Hazardous Waste Event:** Kern Valley Transfer Station • Collection of household hazardous waste materials. For more information visit www.kerncountywaste.com.

June

- **Annual Havilah Frontier Days Celebration:** Tours of historic buildings of the original Kern County Seat, crafts, demonstrations, food. For more information, please call 760-379-2636.
- **Annual Sequoia National Forest South Butterfly Count:** Kern River Preserve. For more information, please call 760-378-2531.
- **Annual Whitewater Wednesday:** Riverside Park, Kernville. Kernville Chamber of Commerce. For more information, please call 760-376-2629.
- **Annual Kernville Mule and Donkey Show:** Jake's Place, Kernville • For more information, please call 760-378-2222.
- **Annual Kids Fishing Derby:** The derby will be held on the lake shore below the Lake Patrol office and Nuui Cunni Cultural Center. All children, ages 4 years to 15 years, are invited to participate in the derby and win prizes. Participants must register to be eligible for prizes. For more information, please call the Kern River Valley Elks Office at 760-376-6564.
- **Stars & Stripes Independence Day Celebration & BBQ Showdown** June 30 • 10 a.m. - 5 p.m. Tank Park, Lake Isabella. Fun for the whole family. Visit www.KernRiverValley.com or call KRVCC 760-379-5236 for more information.
- **Annual Fireworks Display:** June 30. Lake Isabella. Celebrate Independence Day with a beautiful display of fireworks seen from any lake area. For more information, please call KRV Chamber of Commerce at 760-379-5236.
- **Nuui Cunni Fourth of July Celebration:** Nuui Cunni Native American Cultural Center and Museum, French Gulch Recreation Area. Entertainment, food, demonstrations and more! For more information, please call 760-549-0800

August

- **32nd Annual Upper Tule Association Mountain Festival:** Camp Nelson Meadow Sequoia National Forest (at the corner of Nelson Drive & Smith Drive) • Free Admission. Live music, great food, kids' games and more! Please leave your pets at home. For more information, contact Michelle at 559-542-2551.
- **31st Annual Rubber Ducky Race:** August 26. Riverside Park, Kernville • Kern Valley Exchange. Cheer on your own rubber duck crossing the finish line first as it heads down the Kern River. For more information, please call 760-379-7785 or 760-379-6440.
- **Rotary Golf Tournament Fundraiser:** Kern Valley Golf Course • For more information, please call Rotary Club of KRV at 760-417-1008.
- **River Rhythms:** Every Friday night in August. Riverside Park, Kernville • For Concert details visit: www.facebook.com/KRVECF

September

- **Annual Kern Valley Airport Day:** Kern Valley Airport • Free admission. Private, civil, military, and emergency aircraft displays and scenic flights. For more information, please call 760-376-2852.
- **Annual Young Eagles Fly-In:** Kern Valley Airport • Call Raven Aviation at 760-376-2852.
- **Annual Masonic Lodge Labor Day BBQ:** Masonic Lodge, Kernville • For more information, please call, leave a message 760-376-4400.
- **Sierra Fall Arts & Crafts Festival:** Circle Park, Kernville • KRV Art Association. For more information, please call 760-379-2844.
- **Annual Pride Day:** September 15th. A day to clean up the valley and show your pride. T-shirts and BBQ. Sponsored by Thomas Refuse. For more information, please call 760-379-2618.
- **Bud Light Kern River Rock N Blues Fest:** September 27-30 • Frandy Campground. Weekend of music in Kernville: Go to website for ticket information kernriverrocknblues.com or call 661-340-0026.
- **Annual Kern Valley Fall Nature and Vulture Festival:** Kern River Preserve • For more information, please call 760-378-2029.
- **Fishstock:** Kernville Rodeo Grounds, Kernville • live music, vendors, kids games, food, raffles, drawings & much more! Adults - \$10 • Kids 15 & under - \$5. For more information: Call 562-397-8465 or email friendsofthehatchery@gmail.com
- **Cartwright-Hays Fishing Event:** Kern River Fish Hatchery • For persons with special needs.
- **The Kern County Fair:** Sept. 19-30 • Kern County Fair Grounds, Bakersfield. Carnival rides, booths, trade show vendors, kids activities, concerts, exhibits, livestock shows, rodeos, food and more! For more information visit www.kerncountyfair.com.

October

- **Kern Valley Community Orchestra Concert:** Cerro Coso room G • For more information, please call Jody Steel at 760-299-3318.
- **Peddler's Faire:** Faith Community Church Gym, Wofford Heights • For information, call 760-417-2555 or 760-376-6719.
- **Annual Kernville Rod Run "Kick' Back in Kernville":** Kernville • Call 909-754-5270.
- **Annual Kernville Fat Tire Festival:** Kernville • For information, call 800-861-6553 or log on to www.mtnriver.com to download a registration form and obtain specific trail ride information.
- **Annual Golf Tournament & BBQ:** KRV Chamber of Commerce. For information, call 760-379-5236.
- **Rockin' River Beer & Music Festival:** October 20 • Rivernook Campground. Beer, Music, Camping and Fun! Spots are going fast. This event is for a local non-profit and all proceeds will go to Keepers of the Kern whom work tirelessly all year cleaning up the upper Kern so we can all enjoy its beauty! Call 760-376-2705 or visit myrivernook.com • Facebook: Rivernook Campground.
- **Racing for a Cure Horse Show and Fundraiser:** Jake's Place Arena, Kernville • Kern River Valley Horse Show Association annual horse show. Western, English, Halter, trail classes & country pleasure. Call 760-608-2086 or visit www.jakesplacekernriver.com.
- **Outlaw West Weekend:** October 26 & 27 9pm • Kernville Saloon. A Kern River Tribute to Merle Haggard. For more information, call 661-340-0026.

- **Whiskey Flat Fall Festival:** Kernville • Live music, pumpkin patch, Indian encampment, food, haunted maze, and fun. Kernville Chamber of Commerce. For more information, please call 760-376-2629.
- **Renaissance Festival & Model Train Show:** California City Central Park, 10400 Heather Ave., California City • One admission gets you both events! Bring the family and enjoy kings court, Irish music, black smith, children's theater, viking ship, juggling acts, bag piper, tavern, food, belly dancing & shopping! For more information, call 760-373-3530 or www.calcityrenfair.org.

November

- **Cork N Fork Wine & Food Festival:** Eat, Drink and Be Merry for a GOOD CAUSE! Contact Starlite Lounge at 760-376-1895 for tickets and more information or visit starliteloungewinebar.com.
- **Nuui Cunni Fall Gathering:** Nuui Cunni Native American Cultural Center, located at 2600 Hwy. 155 • There will be booths, raffle, auction, demonstrations, gift shop, food, native plants and entertainment. For more information, call 760-549-0800 or visit www.nuucunni.com.
- **Petroglyph Festival:** Petroglyph Park, Ridgecrest • Craft vendors, Hog Fry, music and entertainment, Pow Wow, Native American encampment, wild mustang and petroglyph tours, Balsam Street Fair and Wine Walk. Call 800-847-4830 or visit rpfestival.com.
- **Annual Christmas Parade:** Lake Isabella • Thanksgiving weekend. KRV Chamber of Commerce. For more information, please call 760-379-5236.
- **Annual Christmas in Kernville Shop Hop:** Kernville • Merchants of Kernville. For more information, please call Kernville Chamber at 760-376-2629.

December

- **Vietnam Veteran's Dinner & A Movie:** K.R.C.W.H. proudly presents the 5th Annual Vietnam Veteran's Dinner & a Movie. For more information, call Gary & Karen Zuber 760-379-2109 or Darlene Studdard 760-793-1993.
- **Annual Candle Stroll and Live Nativity:** Circle Park, Kernville • Kernville Chamber of Commerce. For more information, please call 760-376-2629.
- **Parade of Giving:** Circle Park, Kernville • Kernville Chamber of Commerce. For more information, please call 760-376-2629.
- **Household Hazardous Waste Roundup:** Kern Valley Waste Management Transfer Station, Kernville. For more information, please call 661-862-8900.
- **Annual Hoffmann Hospice "Light Up A Life":** Circle Park, Kernville. For more information, please call 661-410-1010.
- **Christmas Spectacular/KRV Woman's Club:** Mt. View Baptist Church • 1st Saturday in December. For more information, please call 818-590-7175.
- **Annual Kern River Valley Bird Count:** Audubon Kern River Preserve • Call 760-378-2029, email rtoleffson@audubon.org or visit kern.audubon.org • Facebook: Audubon Kern River Preserve.
- **Kern Valley Community Orchestra Concert:** Cerro Coso room G • For more information, please call Jody Steel at 760-299-3318.

Weekly, Monthly & Seasonal Events

- **Onyx Farmers Market:** Seasonally. June-November, 7 days a week • Doyle Ranch Road, Onyx. Locally grown produce. 760-377-7460.
- **Fairview Star Party:** Every Saturday closest to the NEW moon. Kernville • KRV Astronomy Club. For more information, please call Rich Burdge 760-376-1291 (day) or 760-376-6290 (evening).
- **Lantern Light Tours & Ghost Hunts:** Held Bi-Weekly • Silver City Ghost Town. For details visit facebook.com/silvercityghosttown.
- **Lake Isabella Downtown Swap Meet:** Local sweep meet open every Saturday and Sunday in Lake Isabella, weather permitting. Vendor spaces available at the Downtown Storage Office Saturday from 7-9 a.m. Vendor Rates are subject to change. For more information, call 760-417-9277.
- **Nogots Swap Meet:** Every Saturday, weather permitting. 6 a.m.-Noon • Southlake. Biggest Yard Sale in the Kern River Valley! Vendor space fee: \$2. For more information, call 760-378-3460.

Activities



PHOTO COURTESY CHRIS HORGAN



PHOTO COURTESY SARAH ROOFFENER



PHOTO COURTESY KERNRIVERSIERRA.COM



PHOTO COURTESY CHRIS HORGAN



PHOTO COURTESY CAROL WILLIAMS



PHOTO COURTESY CANYONCHASERS.NET

This section offers a general idea of the many things there are to do in the Kern River Valley, from the serene to the extreme. You will find something for everyone, of all ages, desires and abilities.

Kern River

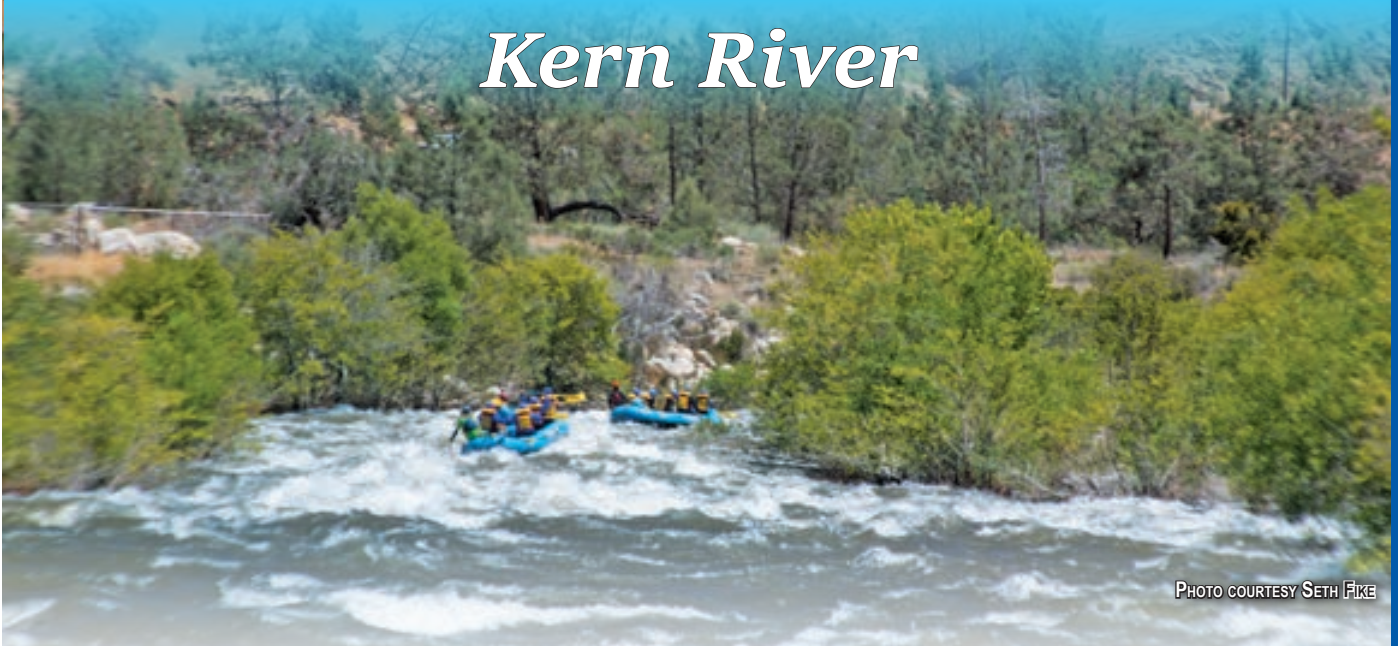


PHOTO COURTESY SETH FIKE

The highest peak in the lower 48 states, Mt. Whitney, feeds the Kern River as it makes its journey through the southern Sierra Nevada into the Kern River Valley and Isabella Lake.

In recognition of their outstanding scenic, recreational, and ecological values, the North and South Forks of the Kern River are a part of the Wild and Scenic River network, affording them protection. The lower Kern, below Isabella Lake, remains unprotected, but is nationally known for its 21 miles of scenic whitewater adventures,

fishing and camping.

The river-side vegetation, wildlife, abundance of dazzling sights and photo opportunities make the Kern River the jewel of the heart of Sequoia National Forest.

WHITewater RAFTING

The Kern River is a whitewater wonderland with some of the most challenging, aesthetic and varied whitewater rafting in the world.

The rafting season for the Kern River generally runs through the spring and summer. The North Fork features an expert wilderness run beginning at the Forks and miles of sections ranging from mild to wild roller coaster rides. The lower river has many class IV, and V whitewater runs.

There are many areas on both the upper and lower river that may be enjoyed by amateurs. Because any river can be a dangerous place, the best way to stay safe and enjoyable, is through a professional outfitter.

RIVER TUBING

Tubing is a rising star on the Kern River. Several of the local outfitters rent tubes, life vests and even shuttles. Tubing the Kern River is similar to rafting, but riding down rapids completely immersed in the experience is a lot more enjoyable.



PHOTO COURTESY SETH FIKE



Betty B's
Justin Tyme
Vacation Rentals

2 & 3 Bedroom Cottages
www.bettybsjustintyme.rocks
liz.lett77@gmail.com
80 & 82 Sirretta St. • Kernville, CA 93238
714-814-3720

FREE Wi fi
Pet Friendly



- New Pillow Top Mattresses
- Full Kitchens
- Flat Screen TVs
- Private Driveways
- Themed Decor
- Faux Fireplaces
- **Located in the heart of Kernville**
 - Perfect for family gatherings

Kern River

KAYAKING

Hit the Kern River and a few of its tributaries for the adventure of a lifetime. The upper river offers runs with varying degrees of difficulty, with the Powerhouse and Limestone being the favorites. On the lower river, below the dam, you might like to try Slippery Rock and Miracle Hot Springs.

SUP - STANDUP PADDLEBOARDING

Stand-up paddleboarding (SUP) is a relatively new form of surfing that has emerged as a way of having a totally different experience on the Kern River and Isabella Lake. This emerging sport has a Hawaiian heritage and is perfect for your next water adventure.

You can rent or buy equipment at local businesses.



PHOTO COURTESY MOUNTAIN & RIVER ADVENTURES

FISHING

The upper and lower Kern River afford some of the best fishing in the state of California and beyond. Rainbow, largemouth bass, native Golden and Brown trout are plentiful and found throughout the river. Fishing is allowed year-round with a fishing license. Above the Johnsondale Bridge special fishing restrictions apply. Be sure to check local Fish and Game regulations.

The Department of Fish and Wildlife stock the river regularly. Local marinas and tackle shops are always available. You can talk to an expert to learn where some of the best fishing spots are and what the favorite bait might be.

The best part of fishing is to find a good spot, experiment with bait and savor the moment.

FLY FISHING

For the avid fly fisher, the Upper and Lower Kern River and Isabella Lake have become 'must places' to fish. The 20 mile stretch of the Upper Kern, from Kernville to the Johnsondale Bridge, has the required pocket water, short runs and long riffles, along with large deep pools where those trophies hang out. Above the Johnsondale Bridge, the river becomes a special regulation area and access is a bit more difficult. Fishing traffic is minimal along the four mile trail, making the upper waters a fly fishers dream. The Lower Kern, flowing below Isabella Dam, has been said to be a 'fishery unto its own.'

A Tradition Of Service

- Self-Service Gas
- Diesel Fuel
- Hot & Cold Drinks / Beer
- Deli Sandwiches
- Hunting, Fishing Licenses
- Boat Permits
- ATM
- 5am to midnight



Crossroads
MINI MART

Now Serving Chester's Chicken

155 & Lake Isabella Blvd. • Lake Isabella
760-379-8170



DAM KORNER RESTAURANT

Serving the Valley for over 40 years!



6303 Lake Isabella Blvd. (At the 4-Way Stop) • 760-379-8770

- Camping Supplies
- Sporting Goods
- Pet Supplies
- Lawn & Garden Supplies
- Housewares
- Propane
- Hardware
- RV Supplies



Isabella **True Value**

Mon.-Sat. 7am-6pm • Sun. 8am-5pm

6050 Lake Isabella Blvd. • Lake Isabella • 760-379-4250



- Beer / Liquor
- Hunting & Fishing Information
- Lotto
- ATM Machine
- Boat Permits

ATM & Major Credit Cards Accepted

Mt. Mesa
Shell

Sun.-Thurs. 6am-10pm
Fri. & Sat. 6am-12pm

McCray & Hwy. 178 • Mtn. Mesa • 760-379-3747

Isabella Lake

Isabella Lake is one of the largest and most widely enjoyed bodies of water in the state of California and is only a few hours away from city lights.

In 1953, the U.S. Army Corps of Engineers completed Isabella Dam. Its attributes draw thousands of visitors to its shores and the surrounding area, creating a year-round opportunity for adventure.

BOATING

Isabella Lake is a favorite of boating enthusiasts and draws boaters from all over Northern and Southern California. Though off the beaten path, it is close enough to be convenient for a weekend outing, or even just a day of fun and sun. Calm water can be found in secluded coves, even when the wind is up. The lake's surface area allows ample room for many boaters to be on the water at the same time. There are three full-service marinas that provide fuel, food, fishing supplies and valuable information for visitors. Before heading out to open waters, remember every boat, watercraft, and sailboard must display a 3-day or 1-year permit, which can be obtained at any marina on the lake or at one of many markets and convenience stores in the valley. Also, all boats are required to have a personal flotation device (PFD) for each person on board that must be in an easily accessible area.



PHOTO COURTESY SARAH ROOFFENER

PERSONAL WATERCRAFT

Riding personal watercraft is a fun and exciting activity. It is one that is great for children and adults alike. It is important to know how to use a personal watercraft safely as it is a powerful vehicle and can cause serious injury if

not used properly. Remember to heed the 'no-wake' zone, which states that when within 200 feet of the shoreline, your speed must not exceed 5 mph. Be alert for hidden dangers beneath the water and watch for fishing boats and other watercraft.

WAKEBOARDING

Isabella Lake, being one of the largest lakes in California, makes it an ideal place to wakeboard. Most people like to head to what they call "Ski Beach", which is between Rocky Point and Stine Cove. The best location does depend on water level. The wakeboard is usually towed behind a motorboat, typically at speeds of 18–25 mph, but can be towed behind a personal watercraft as well. Riding techniques are similar to water skiing, snowboarding, and surfing.

WINDSURFING

Isabella Lake is one of the finest windsurfing hot spots around, with afternoon winds sweeping over the southern portion of the lake. The ideal windspeeds are between 20 and 30 mph. In the predominantly Southerly winds, the launch sites for windsurfing are AuxDam and Old Isabella, while the preferred kiting launch is at Old Isabella. During Westerlies, the South Fork launch ramp is a workable launch for both windsurfing and kiting. If you have a good sense of balance, you will surely find windsurfing to be the most enjoyable water sport around. There are numerous areas that are particularly popular. Lake Isabella windsurfing Facebook page is a great place to stay informed about current conditions and other information pertaining to windsurfing on Isabella Lake.



PHOTO COURTESY:
TOP LAKE: SARAH ROOFFENER
WIND SURFERS: EVA HOLLMANN

Isabella Lake

KITE BOARDING

Isabella Lake offers great kiting with flat water or large chop depending on wind direction and reaches of up to a mile. Windiest times of the year are spring and fall. Winds most often pick up when the coast is overcast and the desert is clear, but can happen anytime. On most days the winds will double in speed and are quite gusty. Bow Kites have the range to handle this, but be careful not to rig too big. Kites range from 7 to 12 for most days. A popular spot is the Ghetto near the boat ramp by the Auxiliary dam. Isabella Lake is a reservoir and there are submerged trees that can be just under the surface in some areas depending on the lake level. Be sure to ask a local where these hazards are located. Camping is free but a lake permit is required for day use and are available at Golden State Surplus in Isabella a few minutes from the beach.



PHOTO COURTESY SARAH ROOFFENER

SAILING

Sailing is a science that involves reading the wind and Isabella Lake is one of the premier sailing lakes. The vast, wide-open surface area and the strong afternoon winds, attract an ever increasing number of small boat sailors. Once you have tried water sailing, you will wonder why you waited so long. Sailors are passionate about their time on the water as the wind fills the sails, and their boat glides peacefully and swiftly through the water.

WATER SKIING

The sport of water skiing has enjoyed a long, eventful history on Isabella Lake and it continues to be one of the most popular water sports enjoyed by enthusiasts all over the country. Just put on a personal flotation device, grab a rope, and experience the sensation of water skiing which compares to soaring through the air.

KAYAK THE LAKE

You can rent or buy kayaks locally if you do not have your own. They have boats that are one and two-person sit-on-tops which have open cockpits, which are nice if you are new to kayaking. Sit-on-top touring kayaks are very stable, easy to paddle, and move through the water much easier than a whitewater kayak.

SUP - STANDUP PADDLEBOARDING



PHOTO COURTESY EVA HOLLMANN

Stand up paddle surfing and stand up paddle boarding (SUP), originated in Hawaii as an offshoot of surfing. Unlike traditional surfing where the rider is sitting until a wave comes, stand up paddle boarders maintain an upright stance on their boards and use a paddle to propel themselves through the water. Stand-up paddle boarding (SUP) is perfect for your next water adventure.

The mild high-desert climate gives great paddling opportunities 12 months a year. Isabella Lake has lovely little nooks and crannies to be explored on a SUP. Many people enjoy paddling all through the winter when it is quiet and peaceful. Local outfitters offer affordable fun classes in the basics of lake paddling for everyone. These classes are easy, affordable, and relaxing.

Kern River Paiute Council
"Nuui Cunni"
Native American
Intertribal Cultural Center

**"Nuui Cunni"
NATIVE AMERICAN
CULTURAL CENTER**

**OPEN TO
THE PUBLIC**

Open WED. - SAT. 9am-3pm Winter hours may vary

*Gift Shop • Museum • Library
Native American Arts & Crafts
Jewelry • Paintings • Events
Craft Classes • Demonstrations
Seasonal Native Plants*

Call ahead for "KITCHEN" hours

at French Gulch Recreation Area

760-549-0800

2600 Hwy 155 • Lake Isabella

www.nuucunni.com • nuucunni@earthlink.net

The Nuui Cunni Native American Intertribal Cultural Center is operated by the Kern River Paiute Council in Partnership with the US Department of Agriculture and the US Forest Service under a Special Use Permit on a non-discriminatory basis. We are a 501 (C)3 non-profit organization.

Corral Creek



8 miles north of Kernville, California
in the beautiful Sequoia National Forest

Call direct for
PET FRIENDLY
room reservations

Ask about our special rates for **FIRST RESPONDERS** and **ACTIVE DUTY MILITARY!**

50 Mountain Hwy 99 • Kernville, CA 93238 • 760-376-3601 • www.corralcreeklodge.com

When you stay at the Corral Creek you will find a unique blend of a peaceful retreat and a launching point for many pleasures and adventures. Located just minutes from Kernville and Lake Isabella, you have many choices including fishing, rafting, kayaking, water skiing, golfing, antiquing, museums, sight-seeing, photography, great restaurants, and a unique brew-pub. A short distance up river you will find the renowned McNally's Fairview Lodge where you will enjoy terrific steaks and a friendly bar. Venture across the bridge at McNally's and look for the hot springs. After the high roads are open in the spring, visit the majestic redwood grove at Trail of 100 Giants or pursue elusive golden trout in the high mountain streams.

Surrounded by the rugged scenic peaks of the Southern Sierra Nevada Mountains, the Kern River Valley offers majestic vistas, blue skies, and room to roam. Our weather varies, but it is never too hot or too cold to have a good time. Spend a day with the clouds and leave the world behind! From sunrise to sunset, the river offers excellent fishing all year. During regular fishing season, it is a short drive to challenging streams such as Peppermint Creek and Dry Meadow Creek. Any time of day, relax on our spacious deck and enjoy a scenic panorama while you barbecue your day's catch or a juicy steak.

We have horse corrals available for a small fee and there is an ample trailer parking area.



Light
BREAKFAST
Daily



Each kitchen includes a stove-top range, refrigerator, microwave, toaster, cookware, glassware, utensils, coffee maker, and complimentary coffee!



All rooms feature a kitchen & dining area, television, phone, Wi-Fi Access (fee may apply), and heat/AC!

Also find us on *TripAdvisor*, *Yelp*, and *Facebook!*

Outdoor Fun

If you have found yourself in the Kern River Valley for a weekend or an extended vacation, you will find yourself surrounded by some of the most beautiful and adventuresome settings in the state. Finding something to do will not be a problem. Whether it be full of excitement and challenge, or an opportunity to relax from the hustle and bustle of city life, you will find it here.

CAMPING

If you are coming to the Kern River Valley for a camping trip, you have come to the right place. You can set up a tent in the mountains, along the Kern River, on the shores of Isabella Lake, nestled on the banks of a babbling creek, in the giant Sequoias or in the high desert. No matter what kind of camping you are interested in, you will find everything you need in the Kern River Valley and surrounding areas. Camping is one of the most widely enjoyed activities in the Kern River Valley because of the many choices offered. There are private campgrounds, U.S. Forest Service campgrounds, campgrounds that offer everything and others, that offer nothing but you and nature. Whatever your choice, before you begin your adventure, be sure to familiarize yourself and everyone in your party with the area, wildlife, and most importantly, safety. Maps and information are available at both Forest Service facilities, in Lake Isabella and in Kernville. Fire permits are required and do remember to "pack it in, pack it out and leave no trace." There is a \$1,000 fine for littering.

HORSEBACK RIDING

Travel back in time to when visitors and locals alike traveled on horseback. Saddle up and prepare for an amazing day of refreshing mountain air, breathtaking views of country vistas and mountain terrain that can only be seen from the back of a horse. Packing trips are available to tour the high country of the Kern River Valley as never seen before. For more information on trails, routes and packers, call the U.S. Forest Service at 760-379-5646 or 760-376-3781.

ROCK CLIMBING

Rock climbing in the Kern River Valley greatly surpasses anything that has been written in any guide book. The exposed granite surrounding the area offers new and challenging rock faces that put skill and bravery to the test and is a paradise for extreme climbers and thrill seekers looking for an exhilarating adventure. For inexperienced and new climbers, there are outfitters in the area to act as your climbing guide. A guide can provide the proper equipment and safety instruction. For a little practice or simply a safe and fun alternative to the real thing, contact Mountain & River Adventures in Kernville to give their climbing wall a try.

HUNTING

The Kern River Valley and surrounding areas offer some of the best hunting in the state. From upland birds, to water fowl, to big game, hunters will not be disappointed. The valley has been popular with hunters for generations because of the variety of game that can be found. Make sure to check with local sporting goods retailers, to find out what kind of game is in season, how to get a license and where to hunt before you go out for the day.

GOLFING

If you are ready to grab the clubs for a day, you will want to head over to the Kern Valley Golf Course. This PGA rated, Par 72 course, has everything you need to enjoy the popular nine-hole course. This small, but mighty course is packed with great challenges for golfers of all skill levels. It offers beautiful scenery of the area and of the Kern River, that runs nearby. The Kern Valley Golf Course provides everything a golfing enthusiast would want including; banquet facilities, equipment rentals, breakfast and lunch service, driving range, tournaments and a comfortable club lounge. To make reservations, or for additional information, call 760-376-2828

SPORT SHOOTING

The Kern River Valley shooting range is operated by the not-for-profit organization, Kern River Valley Gun Association, operating on a non-discriminatory basis with a special use permit from the U.S. Forest Service.

The shooting range provides a safe and environmentally friendly location for recreational target shooting for the entire family. There are archery targets, a regulation trap range and pistol targets distanced from 7 to 50 yards and rifle targets at 50, 100, 200, 300, 400, and 500 yards.



PHOTO COURTESY SARAH ROOFFENER



FRANDY PARK CAMPGROUND

Downtown In The Heart Of Kernville
760-376-6483 • 888-372-6399



Come Stay In
A Covered Wagon!
First In California!

CALL NOW
FOR RESERVATIONS!

3 Rafting
Companies On Site



The Campground On
The Kern River



16 Sites w/Water & Power
Dump Station Free To Our Guests

11252 Kernville Rd. • Kernville
www.frandy.net • camping@frandy.net

Outdoor Fun

The range is open to members from sun up to sun down every day, and unless otherwise specified open to the public for trap on Wednesday, and Sunday mornings, and for rifle and pistol Sunday mornings from 8:00 am to 1:00 pm.

Membership fee is \$30 per year, with a one time set up fee of \$15, with applications available at the range or on line at krvga.org.

GOLD PANNING

Gold panning in the Kern River Valley is a historical staple. Panning the lower river in Keyesville is probably the most popular location. There are old mines all over the entire valley. Most of them are gated, but still offer a day's worth of fun hiking to them and exploring the history. There is a local gold mining shop where they will teach you all the techniques and even let you practice your skills right there at the shop.

STARGAZING

If you are going to be in the Kern River Valley for an overnight stay, be sure to take a step outside in the dark of night. For an extra special experience, get in the car, head for the hills or lakeshore and 'look up.' The Kern River Valley has been rated as one of the prime locations in the northern hemisphere for astronomers, by the International Dark Sky Association. Due to its minimal light pollution, you will be able to see the night sky as never before. Be prepared for a truly magnificent sight. Crystal clear constellations fill the sky and the Milky Way bursts with light. If you are in the right place at the right time, a meteor shower might take your breath away. A satellite or space station may even appear right before your eyes. The Kern River Valley Astronomy Club holds star gazing parties on a regular basis along with special programs for the public. Settle in, look up and relax. The Kern River Valley night skies are yours for the taking. 760-376-6290.

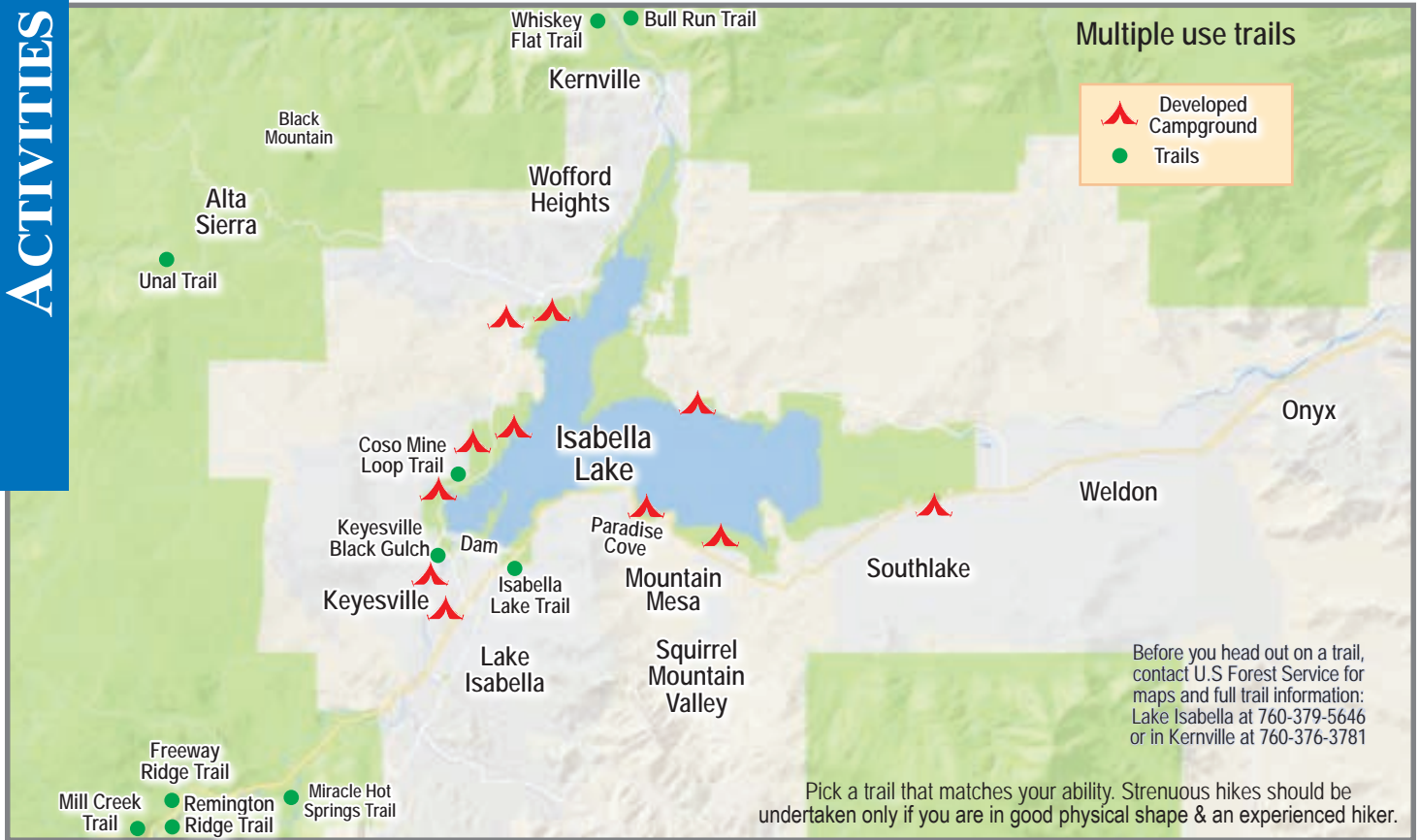
BIRDING

Bird watching (or birding) can be one of the most relaxing and interesting activities you can participate in. The Kern River Valley offers the most impressive birds and the best birding. Many migrating and breeding species call the surrounding habitat home, including a large number of threatened and endangered species. Over 200 species frequent the corridor of the South Fork of the Kern River that is the Kern River Preserve. Located on Hwy. 178 in Weldon, the preserve is a globally important bird habitat. A large variety of birds can be observed anywhere in the valley. For the best viewing, South Fork has the largest expanse of riparian forest in the Western United States. Raptors, or birds of prey, are some of the Valley's most exciting birds to watch for. Bald eagles, golden eagles, peregrine falcons, red-tailed hawks, and turkey vultures are all varieties of raptors or birds of prey. The staff at the preserve are well informed, enthusiastic, and eager to provide all the information you need about valley birds and other wildlife. Tours of the preserve are available and monthly events are offered free of charge. For more information, call 760-378-2029.

ANTIQUING

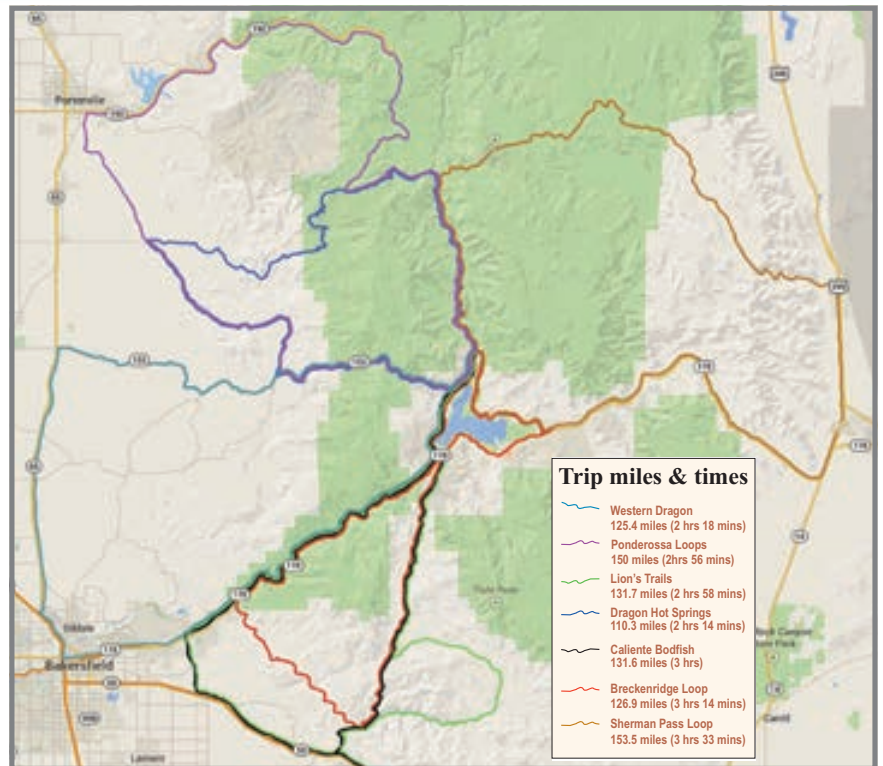
For the perfect day strolling antique shops, looking for that "treasure find," an ideal place to start are the shops bordering Circle Park in Kernville, or try those on Lake Isabella Blvd. in Bodfish. Many of the antiques you will find are from right here in the Kern River Valley. Chat with the store proprietors to learn a bit of the local history and the history of the item you are eyeing.

Popular Trails & Campsites Map



KRV Scenic Road Trips

The Kern River Valley has been a destination for off-roaders for decades, whether it be two-wheel or four-wheel. OHV enthusiasts can explore the Sequoia National Forest on a number of designated OHV riding trails, from Walker Basin to Keyesville, and the Greenhorns, and up to the high country above Kernville. A close and convenient location for some 'wheeling' fun is at the Cyrus Canyon OHV Park, off Sierra Highway, just south of Kernville. The area is a mecca for off-roaders and offers a great variety of terrain, regardless of the type of vehicle you bring with you to the Kern River Valley. State law requires registration of all motor vehicles before being operated on public lands and must have green stickers or street-legal plates, quiet mufflers and approved spark arrestors to operate on public lands. There are more than 12 trails available for a challenging day of off-roading on your next visit to the Kern River Valley. It is highly recommended to ride in small groups, wearing the proper safety equipment, carrying plenty of water, and keeping a first aid kit with you. Proper clothing is also advisable, as the weather can change in an instant and you won't want to get caught short. Play, stay and better than anything, enjoy the ride! For more maps and information, call the U.S. Forest Service at 760-379-5646 or 760-376-3781.



Rugged Trails

OHV RIDING & FOUR-WHEELING

By Chris Horgan, Executive Director,
Stewards of the Sequoia

For decades, off-roaders have been making the pilgrimage to the valley to ride their OHVs. The U.S. Forest Service has worked to provide responsible motorized recreational experiences in national forests and grasslands, with the goal of not damaging the environment. The Bureau of Land Management controls much of the public acreage in the valley not overseen by the U.S. Forest Service. Off-roaders are responsible for checking where off-road riding is allowed and staying on designated trails.

HERE ARE SOME GREAT PLACES TO RIDE:

1. A motorcycle track located in Cyrus Canyon near Kernville.
2. The Kern Plateau offers more than a hundred miles of trails nestled amongst the pines. kernvalley.com offers the following list of OHV trails:

- Rattlesnake Trail, Rincon Trail, Schaeffer Trail, North Meadow Pass Trail, Trout Creek Trail, Cannell Meadow Trail, Sherman Pass, Beach Trail, Little Horse Trail, Fish and Troy Connector, Rattlesnake Creek Trail, Sherman Pass Trail, Boone Meadow Trail, Mahogany Creek Trail, Blackrock Mountain Trail, Beach Ridge Trail, Monache 4-Wheel Drive Road, Granite/Broder Trail, Granite Cut-Off Trail, Jackass Peak Trail, Albanita Trail, Jackass Creek Trail, and Blackrock Station Trail.

For more information call the U.S. Forest Service in Lake Isabella at **760-379-5646** or in Kernville at **760-376-3781**.

3. There is a network of motorized trails in Keyesville, on BLM land near the Main Dam. For more information, call **661-391-6000**.

According to the Kern County Sheriff's Department, OHVs must have green stickers or street-legal plates and quiet mufflers with Forest Service-approved spark arrestors to operate on public lands.

RIDING TRAILS IN THE KERN RIVER VALLEY

By Chris Horgan, Executive Director, Stewards of the Sequoia

The Kern River Valley has been a mecca for motorcyclists for decades and for good reasons. For road riders, there are several loops to choose from. The Lions Trail is one of the most notable routes in the area, even garnering honorable mention in the American Motorcycle Association Magazine as one of the greatest motorcycle roads in America. For a taste of paved mountain riding, try taking Mt. 99 north out of Kernville, toward the Trail of 100 Giants and be sure to stop and enjoy the views along the way. Going this direction gives you the option of heading east over Sherman Pass and coming out on Hwy. 14 at Pearsonville, or taking the Western Divide Hwy. past the Ponderosa Lodge and down to Springville, on the western slope of the Sierras.

Dual sport motorcyclists have the best of both worlds, being able to travel all over the mountains on paved and dirt surfaces. Some of the spectacular dual sport routes include Breckenridge Road, in the area south of the Kern Canyon, and Rancheria Road, which runs from Johnsondale through Alta Sierra and ends at the Rio Bravo Ranch, outside of Bakersfield. In addition to these maintained dirt roads, this area hosts one of the most extensive single track networks in California. These single tracks vary in

difficulty from double black diamonds, to easy trail riding. Please stop by one of the U.S. Forest Service offices and get the current trail map and some suggested riding areas. Many of these trails remain open, in large part, due to the efforts of Stewards of the Sequoia motorized volunteers. They perform maintenance on 200 miles of trails each year. Check them out at StewardsOfTheSequoia.org and learn more about their Trail Appreciation volunteer days.

These are just a few of the beautiful rides in this epic country, so please stay, explore, and enjoy the ride!

HIKING

By Chris Horgan, Executive Director, Stewards of the Sequoia

Hiking is an activity many visitors find great joy in doing in the Kern River Valley, with its abundant and easily accessible multiple use trails, agreeable climate, and beautiful vistas. Hiking became so popular in the valley that a hiking club was formed by local, and out of town hikers, to document hiking trails and provide information for new hikers and out of town visitors interested in hiking in the Valley. If you are planning on doing any serious hiking in, or around, the Kern River Valley, in either the Sierra Nevada or Piute Mountain ranges, then contacting the Kern River Valley Hiking Club is a worthwhile first step to your adventure. Call the KRVHC at **661-778-3453** for more information.

Seventeen shared use nature trails around the Kern Valley have been listed by the Forest Service, and excellent guides to the trails can be obtained from the Cannell Meadow Ranger Station in Kernville. They include: Cannell Trail, Whiskey Flat Trail, Rincon Trail, Flynn And Tobias Trails, Packsaddle Cave Trail, River Trail, Bull Run Trail, Bright Star Trail, Clear Creek Trail, Dry Meadow Trail, Kern River, Mill Creek Trail, Pacific Crest Trail, Remington Ridge Trail, Sunday Peak Trail and Badger Gap Trail.

MOUNTAIN BIKING

By Chris Horgan, Executive Director, Stewards of the Sequoia

The weather in the Kern River Valley is typically mild in our spring, fall and winter seasons, which allows for some incredible mountain biking, nearly year-round. Our local multiple use trails can challenge the most experienced riders, while other trails make newbies wonder why they've never tried this sport. There are three major biking areas in the Kern River Valley:

1. Alta Sierra: near the Greenhorn Summit, allowing you to choose the following trail ride options: Alta Sierra, Badger Gap, Forest 90, Greenhorn Summit Loop or Just Outstanding.
2. Cannell Trail: if the road is clear of snow and your riding abilities are honed, choose to ride from the top of Sherman Peak, or the very exhilarating and challenging 32 mile "Cannell Plunge" with a 9,000 foot descent and 2,300 feet of climbing.
3. Whiskey Flat: A great, advanced ride during cooler seasons, this 14.5 mile trail had become extremely overgrown, but Stewards of the Sequoia volunteers spent more than 500 hours in 2015 to clear the trail and make it enjoyable once more. Be aware the Whiskey Flat Trail is anything but flat, offering quite a few exposed downhill sections with incredible views, as well as a number of hike-and-bike sections. You can find out more about Stewards of the Sequoia Trail Appreciation opportunities and how you can help keep more trails open on their events page at stewardsofthesequoia.org.

Rugged Trails

Don't hit the trail till you are prepared!

Before you head out on a trail, contact U.S Forest Service for maps and full trail information: Lake Isabella at 760-379-5646 or in Kernville at 760-376-3781. Practice Safety: Hike only trails that fit your experience level. Bring plenty of food and water. Also remember that most trails are multi-use trails.

Trip Tips

Be Prepared! Have proper clothing as weather can change rapidly. Carry adequate water, first-aid kit, map and food to meet your needs. **Pick a trail that matches your ability. Strenuous hikes should be undertaken only if you are in good physical shape and an experienced hiker.** Wear good hiking boots and break them in before a long hike.

Boil all water from rivers and streams for 5 minutes before drinking. Preserve water quality by avoiding pollution of surface waters. Set up camp 100 feet from any stream, rivers, or lakes. Bury all body wastes 6 inches deep and 100 feet away from water sources. Remember to pack out what you pack in!

Pets are permitted on trails, but must be under control so as not to disturb wildlife or other hikers. A six foot leash is required.

WALKING, HORSE, MOUNTAIN BIKE AND DIRT BIKE TRAILS GREENHORN AND BRECKENRIDGE MOUNTAINS

BADGER GAP TRAIL: Begins 1 mile north of Oak Flat Lookout Road on Rancheria Road. provides some fine views of the Lower Kern Canyon. Intermediate riders. Number 31E76, 10.2 miles, lowest elevation: 2,200, highest elevation: 4,300.

DRY MEADOW TRAIL starts at the end of the Steve Spring Road (28S27B) in the Piute Mountains. Difficult motorcycle trail. Expert large elevation gain. No water. Goes through recently burned area. Shared Use Number 34E31, 5.2 miles, lowest elevation: 6,000, highest elevation: 7,400.

KERN CANYON TRAIL begins at the Badger Gap Trail (31E76). There are gradual elevation changes as the trail parallels the river through open hillsides of grass and oak. Excellent intermediate sidehill trail. Shared Use. Number 31E75, 8.5 miles, lowest elevation: 2,200, highest elevation: 2,400.



PHOTO COURTESY SARAH ROOFFENER

During the spring and summer months, when hiking on trails from 3000 to 6000 feet in elevation, watch out for snakes.

Wildfire is always a danger in the mountains of Southern California. Campfire permits are required in trail camps. Permits may be obtained from the Ranger Stations.

Please don't smoke while hiking. Take the time to sit down and clear a fire safe area of all flammable material 3 feet in diameter before smoking!

Tread Lightly - Please stay on the trails and do not short cut or create switchbacks. Lower elevations are usually snow free but may be too muddy for winter travel. Wet conditions may also leave trails subject to erosion. Motorized vehicles are prohibited on the Pacific Crest Trail and the Unal Trail. No trails listed are suitable for ATVs.

HOBO FISHING TRAIL begins at Hobo Campground and follows the Kern River to Sandy Flat Campground. Gentle slopes and good fishing are accessible along the trail. Number 31E74, 0.5 miles, lowest elevation: 2,280, highest elevation: 2,400.

KERN RIVER TRAIL begins at the Badger Gap trail (31E76). There are gradual elevation changes as the trail parallels the river through open hillsides of grass and oak. Expert mountain bike or dirt bike. Moderate for hiking. Large dropoffs with exposure above Kern River, Nice spot for flowers in early spring. Shared Use. Number 32E49, 5.3 miles, lowest elevation: 2,000, highest elevation: 2,200.

MILL CREEK TRAIL starts 1-1/2 miles east of Hwy. 178 on Old Kern Canyon Road. The trail ends at a small spur road just north of Squirrel Meadow on Breckenridge Mountain. Intermediate level section to creek then steep sidehill trail, Nice spot for flowers in early spring. Shared Use. Number 31E78, 6.6 miles, lowest elevation: 2,400, highest elevation: 6,700.

PACIFIC CREST TRAIL crosses Piute Mountain Road 1- 1/2 miles east of Landers Meadow. Hiking Only trail. Number 2000, 10.4 miles, lowest elevation: 6,200, highest elevation: 6,800.

PATCH CORNER TRAIL starts .4 miles east of Democrat Station on Highway 178 and parallels the Kern River, coming in at China Gardens. Number 31E82, 2.0 miles, lowest elevation: 2,200, highest elevation: 2,271.

PORTUGUESE TRAIL begins on Forest Hwy. 90 just south of the Girl Scout Camp. Intermediate sidehill trail. Shared Use. Number 31E59, 2.1 miles, lowest elevation: 6,800, highest elevation: 7,300.

REMINGTON RIDGE TRAIL starts 1-3/4 miles west of Hobo Campground on Old Kern Canyon Road. Intermediate steep sidehill trail. Shared Use. Number 31E51, 7.4 miles, lowest elevation: 2,500, highest elevation: 6,400.

SUNDAY PEAK TRAIL begins at the Girl Scout Camp parking

Rugged Trails

area on Forest Hwy. 90. This trail is a good day hike for families, with a nice lunch spot at the summit. Hiking only. Number 31E66, 1.7 miles, lowest elevation: 7,200, highest elevation: 8,300.

UNAL TRAIL loops along Greenhorn Summit beginning at the Summit Station. Moderate climbing and good views. Number 31E58, 3.0 miles, lowest elevation: 6,350, highest elevation: 7,050.

HORSE, MOUNTAIN BIKE AND DIRT BIKE TRAILS UPPER KERN CANYON

Many trails are available to explore on the Kern River Ranger District of the Sequoia National Forest.

Pick a trail that matches your ability. Strenuous hikes should be undertaken only if you are in good physical shape and an experienced hiker.

CANNELL TRAIL begins at the horse corrals, 2 miles north of Kernville on Mtn. 99. At Pine Flat the trail parallels the south side of Forest Road #24S 12, and crosses Cannell Creek two different times before reaching the Cannell Cabin, built between 1904 and 1909. The trail is considered strenuous in difficulty. Expert large elevation gain and loss through nicely forested area at top and open rocky areas at bottom. Be prepared. This is a long trail with no easy exits. Shared Use. Number 33E32, 12 miles, lowest elevation: 2,800, highest elevation: 7,520.

RINCON TRAIL starts approximately 10 miles north of Kernville on Mtn. 99 across from Ant Canyon, and proceeds north following the Rincon fault to the Forks of the Kern River. Salmon, Brush and Durrwood Creeks are crossed offering good fishing and some nice undeveloped camping spots. Expert mountain bike or dirt bike. Moderate for hiking. Sidehill with no limited water during summer. Shared Use. Number 33E23, 19.5 miles, lowest elevation: 3,680, highest elevation: 4,640.

TOBIAS TRAIL starts 1/2 mile up the same trailhead as Flynn Trail. Expert mountain bike or dirt bike. Moderate for hiking. Steep trail in forested and meadow areas up top then exposed brushy slopes at bottom. Top section is Shared Use. Bottom is non motorized. Bottom of trail is at McNally's restaurant by the River. Number 32E34, 4.6 miles, lowest elevation: 3,600, highest elevation: 6,400.



PHOTO COURTESY ASHLEY LOZA

NORTH FORK MARINA get wet!



next to Tillie Creek Campground on beautiful Lake Isabella
(760) 376-1812
reservations@northforkmarina.com • www.northforkmarina.com

One Owner... Two Great Locations!

Personal Watercraft Rentals • Pontoon & Fishing Boat Rentals • Boat Moorings • Fishing Supplies Gas & Oil • Beer, Soda, Water, Snacks & More!

FRENCH GULCH MARINA



across from Pioneer Point Campground on beautiful Lake Isabella
(760) 379-8774

www.frenchgulchmarina.com • info@frenchgulchmarina.com

Under special-use permit with Sequoia National Forest.
We operate on a nondiscriminatory basis.



Rugged Trails

WALKING, HIKING TRAILS UPPER KERN CANYON

WHISKEY FLAT TRAIL starts at the north end of Burlando Road in Kernville, paralleling the Kern River, and ending at the Fairview footbridge. *Please respect private property.* Intermediate that is anything but flat. Lots of undulating elevation gains and losses. Large exposure in some places, non motorized. Number 32E35, 14.5 miles, lowest elevation: 2,800, highest elevation: 3,600.

PACKSADDLE CAVE TRAIL begins 16 miles north of Kernville on Mtn. 99. The trail is a moderate, occasionally steep incline to a cave that has long since been robbed. Bring a flashlight to explore the cave. Number 33E34, 2.3 miles, lowest elevation: 3,600, highest elevation: 4,500.

FLYNN TRAIL begins at the Fairview footbridge, 16 miles north of Kernville on Mtn. 99. Watch for poison oak! Number 32E33, 3.9 miles, lowest elevation: 3,600, highest elevation: 6,000.

RIVER TRAIL begins 19 miles north of Kernville on the east side of the Johnsondale Bridge off Mtn. 99. Good access for fishing on the North Fork of the Kern River. Trail suitable for day hikes or overnight backpack trips and is considered easy to moderate in difficulty. Number 33E30, 5.2 miles, lowest elevation: 3,700, highest elevation: 4,000.

HIKING TRAILS SEQUOIA NATIONAL FOREST GIANT SEQUOIA NATIONAL MONUMENT

LONG MEADOW Leaves from Shake Camp in Mtn. Home State Forest Trail travels northeasterly starting at 6,800' and enters Sequoia & Kings Canyon National Parks at approximately 9,000'. Approximate hiking time to Summit Lake is 6-8 hours. Fishing is available along the trail. Number 31E15, 7.6 miles, lowest elevation: 6,800, highest elevation: 9,000. Moderate/Strenuous.

SUMMIT TRAIL (WILDERNESS PORTION) This trailhead is approximately 10 miles north of Quaking Aspen on road 21S50. Approximate hiking time to the lakes is 5-6 hours. Fishing is available in Maggie and Twin Lakes. Golden Trout Wilderness (GTW). This is an entrance to Sequoia & Kings Canyon National Parks. Number 31E14, 11.3 miles, lowest elevation: 8,400, highest elevation: 9,920. Moderate.



PHOTO COURTESY SARAH ROOFFENER

SUMMIT SOUTH (NON-WILDERNESS PORTION) Trail travels from the GTW boundary south to Freezeout Mdw on the Hot Springs District. Number 31E14, 25 miles, lowest elevation: 7,000, highest elevation: 9,000. Moderate. Bike allowed.

CLICKS CREEK Leaves from trailhead on road 21S50, approx. 7 miles from Quaking Aspen. Parts of this trail

are steep. Fishing is available in the Little Kern River. Number 32E11, 8.2 miles, lowest elevation: 6,200, highest elevation: 7,800. Moderate/Strenuous.



PHOTO COURTESY SARAH ROOFFENER

LEWIS CAMP This trailhead is 8 miles north of Quaking Aspen. Fishing is available in the Little and Big Kern River and the Little Kern Lake. Number 33E01, 18.5 miles, lowest elevation: 5,800, highest elevation: 7,600. Moderate.

JERKEY MEADOW Starts at Pyles Boys Camp, then leaves from Lloyd Meadow near the end of road 22S82 at the Jerkey Meadow Trailhead. Trail is 5 miles to Grey Meadow. Fishing and water are scarce on this trail. Number 32E12, 9.8 miles, lowest elevation: 6,000, highest elevation: 6,800. Easy/Moderate.

FORKS OF THE KERN Trailhead is on road 20S67 off the Lloyd Mdw road 22S82. There is NO BRIDGE crossing the Little Kern, and extreme caution should be used. Crossing should not be attempted during spring snow runoff. Campsites and fishing are available from the Little Kern Crossing to the Big Kern Bridge.



Cheryl's Diner

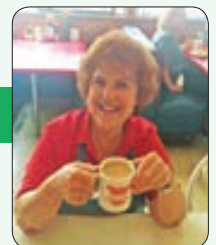
In The ♥ Of Kernville

Just For You...Super Food & Friendly Too!

~ Founded In 1985 ~
Celebrating 32 Years!

OPEN 7 DAYS

Patio Dining
Good Home Cooked Food
Pies & Desserts Cooked On Premises



11030 Kernville Road • Kernville • 760-376-6131

Rugged Trails



PHOTO COURTESY ASHLEY LOZA

Number 33E20, 11.5 miles, lowest elevation: 4,600, highest elevation: 5,700. Moderate.

LLOYD MEADOW TRAIL This trail connects with Lloyd Mdw. Road 22S82 at the Jerkey Mdw. Trailhead and a large turnout near the base of the Needles, 5.1 miles south. Fishing and water are scarce during summer months. Number 32E12, 5.1 miles, lowest elevation: 5,600, highest elevation: 6,000. Easy. Bikes allowed.

NELSON TRAIL This trail travels from Quaking Aspen to Camp Nelson. Fishing is available along most of the trail, except for the upper portion. Number 31E30, 3.7 miles, lowest elevation: 5,300, highest elevation: 6,800. Easy/Moderate. Bikes allowed.

BEAR CREEK Trailhead is on the Coy Flat Road ¼ mile past the last cabin and ½ mile shy of the Coy Flat Campground. At about 3.5 miles, you reach the top of the grove. At about 8 miles you reach the junction with the Summit Trail. Number 31E31, 8 miles, lowest elevation: 5,000, highest elevation: 9,000. Moderate/Strenuous. Bikes allowed.

WISHON TRAIL This trail travels between Camp Wishon and Mtn. Home State Forest. Fishing in the Tule River and its tributaries is available along most of the trail. Number 30E14, 6 miles, lowest elevation: 4,000, highest elevation: 5,600. Easy/Moderate. Bikes allowed.

THE NEEDLES Trailhead is 2.5 miles from Western Divide Hwy at the end of Needles Road (21S05). The trail follows the northern slope of Needles Ridge and offers spectacular views stretching all the way to Mt. Whitney. There is no water on this trail or at the lookout. The lookout tower was destroyed by fire July 28, 2011, when a wayward ember from the wood stove's chimney caught the roof on fire. Number 32E22, 2.5 miles, lowest elevation: 7,800, highest elevation: 8,200. Moderate. Bikes allowed.



PHOTO COURTESY SARAH ROOFFENER

FREEMAN CREEK This trail connects Quaking Aspen with Lloyd Meadow and drops 1500 ft in elevation between the two locations. Fishing in Freeman Creek at Lloyd Meadow is normally good. Number 32E20, 4.3 miles, lowest elevation: 5,600, highest elevation: 7,100. Moderate. Bikes allowed.

***JORDAN PEAK** This trail is short, but steep and ends at the Jordan Peak Lookout. The trailhead is at the end of road 20S71 which leaves from the North Road 21S50 about halfway between the Clicks Creek and Summit Trailheads. Number 31E35, 1.2 miles, lowest elevation: 8,600, highest elevation: 9,115. Easy/Moderate. Bikes allowed.

***MULE PEAK** This trail is short but steep and ends at the Mule Peak Fire Lookout Tower. The trailhead is off of road 22S03 which leaves from the Western Divide Highway just north of the Trail of 100 Giants. Number 31E43, 1.2 miles, lowest elevation: 7,600, highest elevation: 8,200. Easy/Moderate. Bikes allowed.

**The fire lookout may be able to visit with you during summer months, dependent upon current fire activity.*

OUR WILDFLOWERS

Nothing heralds the arrival of spring like a green mountainside covered with a blanket of vibrantly colored wildflowers. The Kern River Valley offers an unrivaled and spectacular show of Mother Nature's springtime gems. Don't forget to bring your camera! These springtime beauties don't linger long. Wildflower viewing is at its best for a few short weeks, from late February to early April.



PHOTOS COURTESY SARAH ROOFFENER

Rugged Trails

ACTIVITIES



(Both locations are free to the public and managed by the US Forest Service)



29TH ANNUAL ISABELLA LAKE FISHING DERBY

MARCH 24, 25 & 26, 2018

www.kernrivervalley.com

RETURN OF THE

**\$10,000
FIRST
PLACE
TROUT**

**ENTER
TO WIN**

**\$500 Early Bird Deadline
March 1, 2018**

**INDIVIDUAL
\$30
FAMILY OF 5
\$65**

- In Person Pre-Registration Deadline Wednesday March 21, 2018 by 4 PM
- Online Registration Closes Tuesday March 20, 2018 by 12 Noon
- No Entries will be accepted after 7 am on Saturday March 24, 2018-No Exceptions

**NEW DERBY HEADQUARTERS! 6405 LAKE ISABELLA BLVD. LAKE ISABELLA, CA 93240
(SENIOR CENTER BACK PARKING LOT ENTRANCE)**



Catch More Fish.



**LONGEST TROUT
1ST PLACE PRIZE \$10,000
TROUT W/SHIRT
or \$5,000 w/o SHIRT**

2ND PLACE \$1,500

3RD PLACE \$1,000

4TH PLACE \$500

5TH PLACE \$250

**BOBBER BOWL TROUT PRIZES
LAKE TROUT LOTTO**

50/50

BLIND BOGEY

DRAWING PRIZES

\$16,884.50 GRAND PRIZE BOAT RAFFLE

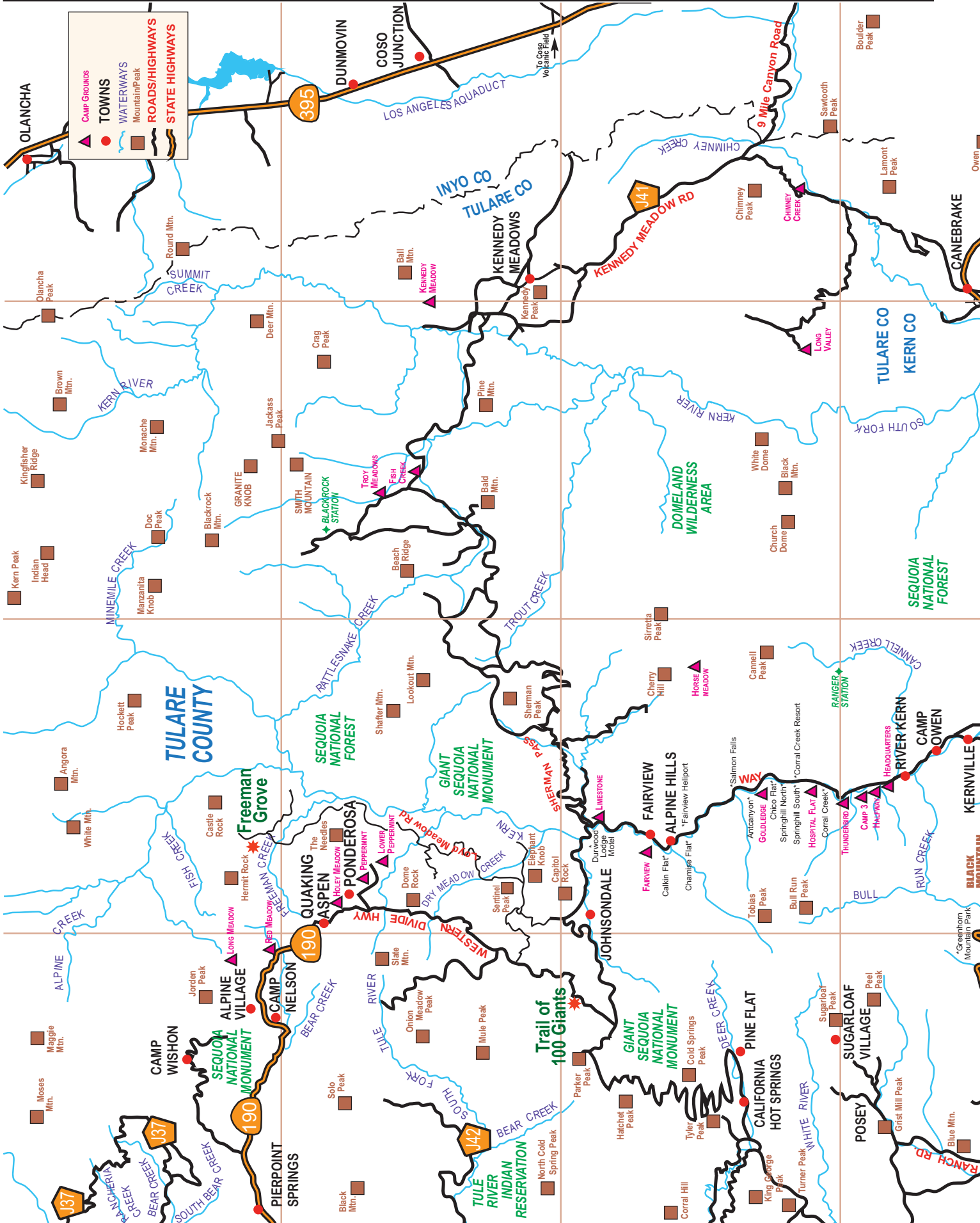


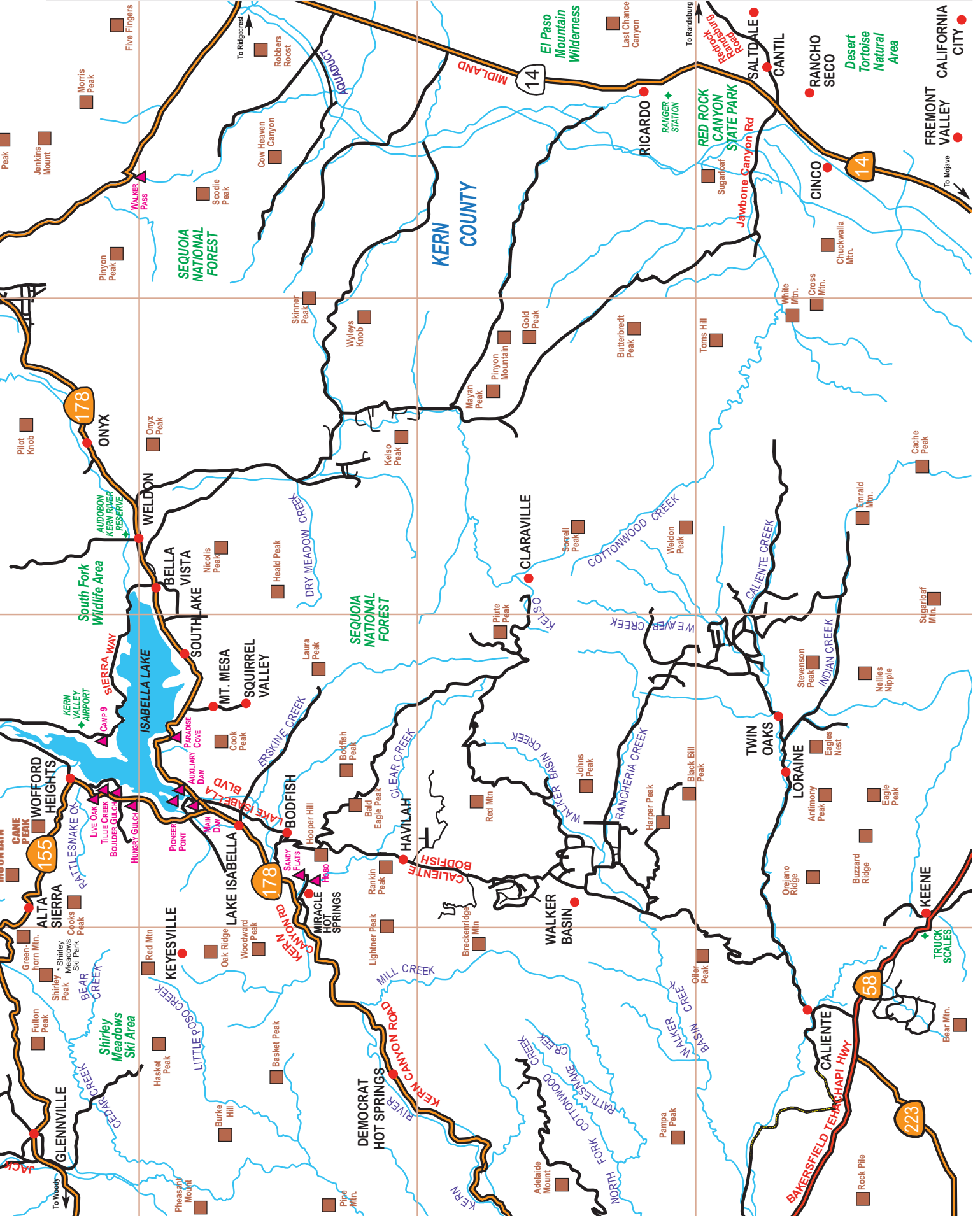
Honda
EU2000i
\$1,149
value



Find us on Facebook @lakeisabellafishingderby









We're Here All Year!

- California's Best Kept Secret -



KERN RIVER VALLEY CHAMBER OF COMMERCE

6416-D Lake Isabella Blvd • Lake Isabella, CA 93240

KernRiverValley.com

760-379-5236

Casino Night • Annual Fishing Derby • Annual Firework Extravaganza • BBQ Showdown • Golf Tournament • Christmas Parade



Snow Activities

The Kern River Valley is definitely not a boring place during winter. The surrounding mountains turn into a winter wonderland and snow play can be heard all around.

SNOW PLAY

Head for the Greenhorn Mountains if a day of tubing, sledding, snowball fights and building snowmen is on your list. Shirley Meadows and Alta Sierra are fantastic places to take the family. You can also pull off on one of the highway safe spots to enjoy a day of fun in the snow. Be sure to bring chains and emergency supplies in case of the unexpected.

SNOWMACHINING, CROSS-COUNTRY SKIING, & SNOWSHOEING

The Greenhorn Mountains, Rancheria Road, Sherman Pass and above Johnsondale are the perfect spots for snow enthusiasts to find an abundance of developed snow, cross country skiing and snowshoeing trails. For those up to the challenge of experiencing winter in the Kern River Valley, these snow-covered forest roads provide

the perfect terrain. Please remember, all snow machines are required to be registered with the state and have a valid "Green Sticker" affixed to the vehicle. Snowmachining is not allowed in wilderness areas or on trails designated for cross-country skiing. All snowmachine trails are open to skiers and snowshoers. Safety should be a top priority for all users on any trail. For information and maps, call the Kern River Ranger District at 760-379-5646 or 760-376-3781.

SKIING, SNOWBOARDING, & SNOW TUBING

For those wanting to experience the exhilaration and thrill of downhill skiing, snowboarding, or tire tubing, the Alta Sierra Ski Resort and Terrain Park on the Greenhorn Mountains offers the perfect opportunity to soak up the beauty of this area in winter. Only minutes from the valley floor, Hwy 155 from Wofford Heights takes you right to Greenhorn Summit. Hwy 155 is usually open in winter months. Always remember to check with the California Highway Patrol at 1-800-GAS-ROAD or the U.S. Forest Service at 760-379-5646 or 760-376-3781 for the latest road conditions.

SHADED KNOLL MOBILE & RV PARK

Centrally located between Kernville and Lake Isabella

Family Park with Full Hookups

Walking distance to theater, medical center,
shopping, park/playground, lake & more

760.549.0460 • 35 E. Evans Rd. • Wofford Heights, CA 93285

Destinations



PHOTO COURTESY ASHLEY LOZA



PHOTO COURTESY ASHLEY LOZA



PHOTO COURTESY SARAH ROOFFENER

As you will soon realize, everywhere in the Kern River Valley is a “must see” place. The magnificent wonders of the valley are waiting to be discovered. Whether it’s by car, bicycle, horseback or simply on foot,

get out there and start discovering. This section of the Visitor’s Guide will highlight many places in and around the valley that will give you wonderful experiences and have you returning to the valley again and again.

Fascinating Stops

SILVER CITY GHOST TOWN

If you are looking for a fun, hands-on history lesson, Silver City Ghost Town in Bodfish is a definite stop during any trip to the Kern River Valley. Much of the valley's history is preserved there in the thousands of area artifacts on display throughout the grounds.

Buildings from the past have been attentively preserved in a state of "arrested decay." This extremely interesting tour is of a realistic town site containing buildings from the Keyesville, Isabella, Claraville, Hot Springs, South Fork, Burlando Ranch, and Miracle mining camps. Furnished with items from the early era of the Kern River Valley, more than twenty historic buildings are open for you to explore.

Adorned with period artifacts, historic saloons, shops, miner's cabins and the old Isabella jail are available for you to enjoy. This site is a great representation of gold outposts and



PHOTO COURTESY CLAYTON HUCKABY

miners abandoned long ago.

Silver City is listed in the National Directory of Haunted Places and there are those who believe it is haunted by spirits from the past.

You will have to pay a visit to one of the bi-weekly "Lantern Light Tours & Ghost Hunts" held every April through October, to decide for yourself.

PEARL HARBOR MEMORIAL

Who would guess that the Kern River Valley would be host to a memorial for Pearl Harbor and the U.S.S. Arizona Memorial? But it is, and it is a treasure to behold. The memorial is located at Uffert Park, between Lake Isabella and Bodfish. It has precious artifacts and information about the event that changed our course in history during WWII. Lake Isabella's Tank Park is named for the actual military tank and amphibious landing vehicle parked in front. In 2004, a



PHOTO COURTESY SARAH ROOFFENER

monument was dedicated housing remnants of the USS Arizona, sunk at Pearl Harbor, in honor of the event that became known as the day that will live in infamy.

After viewing the memorial, a picnic may be in order as Uffert Park offers very nice accommodations for the entire family with restrooms, playground, and a great space to play.

KERN VALLEY MUSEUM

Gripped by Gold Fever in the early 1850's, the entire Kern River area was destination to many of the gold seekers migrating west in search of great fortune. Once the gold died out, a number of those treasure seekers stayed in the valley and became ranchers, farmers and merchants. A trip to the Kern Valley Museum is a must to learn the complete history. The museum is filled to the brim with historical treasures. Inside, discover everything from prehistoric times to present day. There is a large fossil exhibit and geological section along with mining, ranching, Native American presence, movie making history, an interactive history of the Edison hydroelectric plants that line the Kern River, and so much more. The museum is open Thursday through Sunday, 10:00 a.m. to 4:00 p.m. The Kern River Valley Historical Society and its many docents are always ready and willing to give you a guided tour or answer any questions that may arise as you escape into the past. Admission is always free, however donations are gladly accepted. For more information, call the museum at 760-376-6683.

KEYESVILLE

Today the historic Keyesville town site is not much more than a ghost town, but a few generations ago, it played an important role in the settlement and early mining of the Kern River Valley.

In 1851, gold was discovered on Greenhorn Creek near the Kern River just a few miles northwest of the community of Lake Isabella. The first gold rush on the Kern River happened in 1852 when Richard Keyes discovered lode gold. Keyesville is a California historical landmark. Even though the actual site is on private land, there are many historic resources in the surrounding area that can be enjoyed, including Native American mortar rocks, placer and hardrock gold mines, the Walker cabin, Keyesville village, the old Keyesville Fort, and the cemetery. The Keyesville Classic Mountain Bike Stage Race is a world-class event that is held each year in Keyesville. The event carries the status of "Classic" by the National Off-Road Bicycle Association.



PHOTO COURTESY BOB POWERS COLLECTION

Fascinating Stops

FISH HATCHERY

Located just a mile or so north of Kernville, the Kern River Fish Hatchery is a must stop during your visit to the valley. The original hatchery was built in 1928 and the water supply comes directly from the Kern River, originating from the snow pack north of Mt. Whitney. During your trip to the hatchery, you can feed the trophy trout and visit the nature museum. Inside the Natural History Museum are collections of local birds, nests, eggs, mammals (from mouse to mountain lion), fish, reptiles, animal skulls, rocks, minerals and many other interesting displays of local natural history. The hatchery is open Wednesday through Sunday, 9:00 a.m. to 3:00 p.m. (Hours may vary seasonally).

NUUI CUNNI NATIVE AMERICAN CULTURAL CENTER

The cultural center is located right on the shores of Isabella Lake, just off Hwy 155 at the French Gulch Recreation area. The Nuui Cunni Native American Cultural Center provides a beautiful and tranquil experience into the ancient history of the Kern River Valley. It provides a rich cultural background, in a natural setting, of what life would have been like thousands of years ago when the native community flourished.

“Our House” represents over 3,000 years of history by the Paiute-Shoshone, Tubatulabal, Kawaiisu and others travelling through the valley in their search of food.

Inside the building that is designed as a hogan you will find authentic Native American artifacts from not only the local peoples, but from tribes far and wide. The center includes a breathtaking view of Isabella Lake. It also has a native plant garden filled with traditional herbs and plants ancestors used as food and medicine. There is gift shop offering many Native American arts and



PHOTO COURTESY SHANNON RAPOSE

crafts. Education is central to the mission of the center and there is always someone on hand to guide you through the museum or escort you outside for a tour of the gardens. Bring the entire family and get ready for a special treat. The center is open Wednesday through Sunday from 9:00 a.m. to 3:00 p.m. (hours vary seasonally). For more information, email nuuicunni@earthlink.net.

GATEWAY TO THE SEQUOIAS

The Kern River Valley is the Gateway to the Giant Sequoia National Monument and these awe inspiring works of nature are located within an hour's travel. The “large trees” grow only on the western slopes of the Sierra Nevada mountain range in California. These giants are closely related to the coastal redwoods; however, they are more massive and considered to be the largest trees in the world in terms of volume. This national monument gives the public an extraordinary view of the breathtaking giant sequoia trees and other natural resources with every turn in the trail.

TRAIL OF 100 GIANTS

The Trail of a 100 Giants is a self-guided interpretive trail through the Long Meadow Grove of Giant Sequoias. It has long been a popular tourist attraction to get up close and personal with some of the largest living beings on the planet. The paved trail is 1.3 miles with a paved parking area, restrooms, a picnic area, and a nearby campground. This is a fee area. The largest tree in the grove has a diameter of 20 feet and is 220 feet in height. Some of the largest trees in this grove are estimated to be up to 1,500 years old. There are about 125 trees in this grove that are larger than 10 feet in diameter. There are more than 700 trees that are less than 10 feet in diameter.

Another very impressive



PHOTO COURTESY SARAH ROOFFENER

Fascinating Stops

sight along the trail is where two trees fell on Friday September 30, 2011. They had grown together at the base. They remain on the ground today, lying in silence with a tremendous root of over 17 feet across exposed and impact fractures which allow the public to view the inside of this giant.

Enthusiasts of all kinds will be delighted by what they encounter along the trail. Visitors are welcome to climb in and on the giants to really get a feel for their magnificent lives.

The summer months or early fall are the best times to plan your visit by car. In the winter there are snowmobile trails that lead you to the grove. You will want to allow plenty of time to marvel over these amazing trees as each one has unique characteristics.

PRESIDENT BILL CLINTON TREE

April 15, 2000, President Bill Clinton proclaimed the establishment of the Giant Sequoia National Monument and made his announcement beneath one of the giant trees at the Trail of 100 Giants. That tree carries his name to this day.

FREEMAN GROVE

At 4,192 acres, the Freeman Grove is one of the largest groves with 800 sequoias that are 10 foot in diameter or more. There is a quarter mile developed wheelchair accessible loop trail that meanders its way through the giants. There is a trail that splits off along the way. It crosses a slow moving creek atop a sturdy bridge. The trail continues up into a quieter much less used area, along a creek. This trail is about 4 miles one way. One thing that makes this grove special is that most of the trees here are very young. There are only a couple of trees with a 20 foot or larger diameter. Within the grove, there are plenty of pines, firs and oaks to create a romantic wooded hike.



PHOTO COURTESY SARAH ROOFFENER

PRESIDENT GEORGE H.W. BUSH TREE

In 1992, President George Bush delivered his presidential proclamation about protecting and preserving land while standing aside this tree. It was later named in his honor. The Bush Tree is the largest tree in the Freeman Grove.

ALDER CREEK GROVE

The Alder Grove is nothing like the Trail of 100 Giants or the Freeman Grove. There is no paved trail and few cars in the parking area. It is quiet and secluded. It is one of the most beautiful groves in the area. The grove is over 700 acres and has giants dispersed in the entire grove that is thick with pines.



PHOTO COURTESY SARAH ROOFFENER

STAGG TREE

The Stagg Tree is now the fifth largest tree in the world since General Sherman fell in January 2017. The Stagg Tree is on private property on the border of the wilderness boundary. The property owners allow people to hike through their property to the Stagg Tree. Please respect property owners so visitors can continue to enjoy this tree. After the trail passes the old logging cabins, it enters a denser forest of pines, sequoias, and deciduous trees. Autumn is the most beautiful time to visit. The trail winds its way through a tunnel of very colorful deciduous trees.

DOMEROCK

As you drive up the Western Divide Highway, you can see Dome Rock between breaks in the tall trees.

The trail is only about 1.5 miles out and back. It is an easy, but steep trail that you can take children and dogs on. When you get to the top of the trail, you are on top of Dome Rock which offers some of the most spectacular views of the forest, valley, and mountains. The rock slopes down deceptively steep till it drops off. Before you get to the top of the rock, there is a trail to the left that takes you to some popular rock climbing destinations. When on top of Dome Rock, to the left, there is a huge rock formation collectively called the Needles, a longer hike with more incredible views and more climbing opportunities. The Western Divide Highway above Johnsondale is closed in the winter.



PHOTO COURTESY SARAH ROOFFENER

THE NEEDLES

The lookout tower burned July 2011, but the hike still offers incredible sights. It also offers great climbing opportunities. The Needles have some of the best climbing in the state, for both experts and moderate climbers. You can see the towering granite peaks from Forest Rte 22S82 heading towards the Freeman Grove. You can hike or mountain bike the 3 mile dirt road (Forest Rte 21S05). If climbing is not for you, you can hike the 5 mile round-trip trail that weaves in and out of pines. There are benches to take a rest and enjoy the views the first mile of the trail. These views are nothing compared to the expansive panoramic views from the top of the rock that the lookout formerly sat on. Since the fire, the stairs to the lookout are closed.

QUAKING ASPEN

After passing the Ponderosa Lodge, where you can stop for meals, amenities and/or lodging, the road is lined with aspen trees. In the fall, this is an incredible colorful sight! There are many hiking trails through meadows, along creeks, and through the forest. There are also campgrounds nearby that are near creeks.

Fascinating Stops

SENTINEL PEAK

Sentinel Peak is one of the more impressive large granite peaks. It is an incredible climbing destination, but also offers a great hike and beautiful views. It offers 5.9 to 5.11 climbs, top bolted, and has single and multi-pitch climbs. The trail to get to the peak is 2.6 miles round trip. Sentinel Peak is typically explored by those seeking to get off the beaten path. The trail is not marked and lightly used. Keep an eye out for cairns (stacked rocks) to direct the trail.

JORDAN HOT SPRINGS

Now within the Golden Trout Wilderness boundary, the hike to the hot springs is an 11 mile round trip trek. There are historic cabins from a resort started in the 1900s. The trail travels down a drainage through the McNally Fire burn area. Near the hot springs is a meadow that offers great overnight camping. There are streams to enjoy fishing, and views of Manzanita Knob.

SEVEN TEACUPS



PHOTO COURTESY 3.BP.BLOGSPOT.COM

Dry Meadow Creek rushes and falls through the pot-hole gorge known as the Seven Teacups. This creek has sculptured the granite for ages, dropping nearly three hundred feet in two-tenths of a mile before it reaches the North Fork of the Kern River. The Seven Teacups are a local treasure on Dry Meadow Creek just before it joins into the Kern River. When you hike up the River Trail, you meander along the trail next to the river. When you get to the creek, it gets a lot steeper. On high water years and in

cooler weather, it is hard to wade across the Kern River. The best time to visit the Teacups is in the summer and fall.

NATURAL WATER SLIDE

There are a few places to explore that have natural water slides. Where there is steep terrain, granite slabs and creeks, you will find a natural water slide. There are a few popular places to go to enjoy the slides. Peppermint Slides is among the favorite. It is a mile hike up a closed road. It is easy to miss the trail that leads off to the right. When it is warmer, it is a very busy destination.

PEPPERMINT CREEK FALLS

A definite must see during your visit to the Kern River Valley is Peppermint Creek, a tributary to the North Fork of the Kern River. The trail snakes through a meadow next to Peppermint Creek, then through a forest of shady Jeffery Pines. The trees open up and your view is of a 150 foot waterfall below with a huge granite dome above. Although the journey to the top of the falls is fairly easy, prepare for a steeper descent to the bottom of the falls. To get to Peppermint Falls, it is a 1.6 mile hike on a heavily trafficked out and back trail. As the creek tumbles over the rounded granite landscape, the sound and the mist it creates are magnificent and well worth the trip down. You can hike to the bottom of the falls for a better view of one of the most memorable and beautiful waterfalls in the region. Remember to respect private property nearby.



PHOTO COURTESY 1.BP.BLOGSPOT.COM

Fascinating Stops

SOUTH CREEK FALLS



PHOTO COURTESY SARAH ROOFFENER

One of the most attractive road-side waterfalls above Kernville on Hwy Mt 99 is South Creek Falls. It is said to be 120 ft. tall and has a spectacular split drop. When the runoff starts, its waters often shoot straight off the ledge roaring to the bottom. It meets the North Fork of the Kern River at the Johnsondale Bridge and becomes part of one of the most breathtaking rivers in California. It is located just 15 miles above Kernville. Like most snowmelt-fed waterfalls, the falls is at its wildest in late spring, especially when the runoff starts.

NOBE YOUNG FALLS

These falls are hidden treasure most people drive right by, never knowing it is right behind a few trees. To get to the falls, it is a 1 mile round trip. There is no official trail to get to the falls, but you can follow an old logging road to a lightly used trail. The falls are about an 80 foot drop. In the fall there are raspberries and elderberries along the trail.

BRUSH CREEK

Brush Creek offers easy access to exciting rapids, super fun slides and beautiful waterfalls, plus excellent fishing where it cascades into the North Fork of the Kern River. Depending on the time of year, the creek even offers swimming, sun bathing, camp-



PHOTO COURTESY SARAH ROOFFENER

ing, hiking and kayaking. For many years there has been a Brush Creek Down River Race during the Kern River Festival. Brush Creek should be at the top of the list when visiting the valley. A visit to Brush Creek is well worth your time.

UPPER SALMON CREEK

Upper Salmon Creek Falls boasts the title of the highest waterfall in the Southern Sierras. The top of the falls is enormous solid granite walls. This is another area that offers not only spectacular views, but also great hiking and rock climbing. The upper trail is where you can see the Salmon Creek Teacups.

LOWER SALMON CREEK

There is a trail that starts at the Kern River and follows the creek till it gets to a narrow canyon. There is a face-like boulder at the top of the falls with a pool at the bottom.

FORKS OF THE KERN

The trail to the Forks of the Kern offers plenty of vista points. The trail zigzags down a forested hillside. The first few miles are steep. To get to the Forks, it is a 2.3 mile round trip hike, with a 5,800 foot elevation change. There are many longer overnight trails that branch off once you get to the forks. This part of the river offers spectacular fly fishing. The elevation gain, helps this jewel remain remote and quiet. It is a great place to hike to find peaceful solitude. Find a nice shoreline to crack open a book, fish or relax with only the sound of the river and birds in the trees.



Exhibits • Gift Shop • Art Gallery

Museum Hours

Thursday thru Sunday • 10am-4pm

Sponsored By: The Kern River Valley Historical Society

Visit Our Website For Events & More!

www.kernvalleymuseum.org

49 Big Blue Rd.

Kernville

760-376-6683

Fascinating Stops

Weldon, Onyx, and the surrounding areas along the South Fork of the Kern River boast a rich ranching and cowboy history that still lives in its pastoral settings. After possibly thousands of years of being the winter home of the Tubatulabal Native American tribe, cattle ranchers began raising their stock in the South Fork Valley in the 1860s. This area is home to Audubon California's Kern River Preserve. The South Fork area contains many small hamlets, such as Bella Vista, Fay Canyon, Kelso Valley, Hillview Acres, and Lakeview Ranchos, as well as the towns of Onyx and Weldon. Most of the property is zoned for large animals, making it ideal for farms, horse ranches, and working cattle ranches. The definition of country living is found here: plenty of open spaces, and beautiful scenery.

SCENIC SIERRA WAY

In the Kern River Valley there is a stretch of road that is unlike most others in California or anywhere else. The road is the stretch of Sierra Way between Kernville and Weldon, also known as "the back side of the lake" or "the Kernville cutoff." In the space of only about 15 miles, you'll see amazing vistas and an incredible transformation of terrain.

Enter Sierra Way, driving south, and the landscape changes quickly to pastoral grassland with private estates and horse ranches. The Kern Valley Airport soon swings into view; a rural airport catering to small recreational aircraft. There are a few campsites available right at the airport.

As you climb the grassy hills to the south, suddenly there is the amazing vista of Isabella Lake as seen from several hundred feet above lake level, the only place on the lakeshore where this is possible. Across the lake the Piute

Mountains form the backdrop, the peaks of which are covered with snow in winter.

Continue along to the Stine Cove area, past Robinson Cove, a residential area, and then to Hanning Flat, a wide-open area that was once home to a bootlegger's still in the Prohibition era. It is now used for hunting, and a model airplane flying.

On the lake side of the road there is a rocky outcropping known as Rabbit Island. It is a smaller version of Morro Rock in Morro Bay.

Climb another set of hills and you are driving alongside the Kern River Preserve, a stretch of undisturbed willow forest that is a sanctuary for birds. In the fall you can see thousands of turkey vultures spiraling lazily in the sky above. Bird enthusiasts come from everywhere year round to enjoy the preserve.

As Sierra Way turns due south to join Highway 178, there is a bridge over the South Fork of the Kern River, and then you are in cattle country. Weldon is the home of several large active cattle ranches.

THE A. BROWN MILL

In the 1880's, Andy Brown, a pioneer businessman in the Kern River Valley, owned stores in Old Kernville, Havilah, and Weldon. His store was the center of the community and his South Fork ranch encompassed some 14,000 acres. The A. Brown Store in Weldon contained a boarding house, a post office, and a bank. In a field near the store was a mill for grinding flour. The old mill is still there and is one of the most photographed rustic buildings in the Kern River Valley area. The A. Brown Mill was built in 1878. It was first powered by a water wheel, and later by steam power. Cottonwoods from the river bottom were cut to feed the steam engine. The flour that was made in the mill was sold locally and also out of the valley.



PHOTO COURTESY SARAH ROOFFENER



PHOTO COURTESY:
TOP SOUTH FORK: SUBMITTED
BROWN MILL: STATIC.WIXSTATIC.COM

Fascinating Stops

SOUTH FORK RANCHES



PHOTO COURTESY STONERIDGEPRESS.COM

Active cattle ranches like the Hafenfeld Ranch and Onyx Ranch are found throughout the South Fork Valley. The stunning granite mountains of the Sierra Nevada Mountain range backdrop cattle grazing in picturesque fields. If your visit is during the right time of year, you might get to see a real cattle drive in action. The South Fork area is open cattle range, so drive carefully. Bring your camera; you'll want to stop often and photograph the incredible scenery. Be sure to head over to South Fork between the months of March and May to see our beautiful wildflowers on the mountainsides.

KERN RIVER PRESERVE

Exploring the great outdoors is a wonderful way to spend time in the Kern River Valley. A must stop family destination is the Kern River Preserve in Weldon. The area is home to the highest altitude and largest contiguous Great Valley cottonwood and willow forest in the state of California. The preserve is a sanctuary for many species of birds, and birds that use the South Fork Valley as a stopping point on their migratory travels. This treasure of environmental delights is managed by Audubon California for the preservation of one of California's finest remaining riparian forests and the wildlife it supports. There are numerous nature trails to wander along as nature bursts forth around every bend. There is no collecting, fishing, or hunting on the preserve. If you see any animal or plant on the preserve, please take only pictures and memories. Do not disturb nesting birds and stay on the designated trails. Private tours can be arranged. 760-378-2531.



PHOTO COURTESY AUDUBLOG.ORG

COTTAGE GROVE CEMETERY

Along Hwy. 178, just east of Onyx, you will find the Cottage Grove Cemetery tucked into a shady curve, just off the road. This tiny cemetery is packed with history dating back to the 1860's. Many of the headstones date back to life in the Kern River Valley more than a century ago. The Cottage Grove Cemetery is just one of the many fascinating glimpses of history in the South Fork Valley.



PHOTO COURTESY C4.STATICFLICKR.COM



Welcome To Our Beautiful Kern Valley!



A Complete Line Of:

- Lumber
- Building Supplies
- Paint
- Tools
- Automotive
- Nursery & More
- Camping Supplies
- Canopies
- Sporting Goods
- Generators
- Outdoor Furniture & More

Bargains through the store everyday with help and advice for the do-it-yourselfer and a complete department to bid on your contract job!



Mon.-Fri. 7am -6pm (Store) • 7am -5pm (Yard & Nursery)
Sat. & Sun. 8am-5pm

www.lmlumber.com • sales@lmlumber.com

760-379-4631

4700 Isabella Bl. • Lake Isabella • M/C-Visa-Disc

High Country



PHOTO COURTESY PICS4.CITY-DATA.COM

Ranger Station. Due to its elevation, the ranger station is not accessible during the winter months. For additional information, contact the U.S. Forest Service office in Kernville at **760-376-3781** or Lake Isabella **760-379-5646**.

KENNEDY MEADOWS

Kennedy Meadows is a small community of cabins and homes in the beautiful pine woodlands and meadows on the Kern Plateau, located at 5,800 feet. The campground has 39 spots with a motorhome limit of 30 feet. The back roads provide privacy and seclusion. Kennedy Meadows is accessible via paved roads from either Kernville or Highway 395. Winter conditions force closure of the roads, so call ahead to the U.S. Forest Service office in Kernville at **760-376-3781** or Lake Isabella **760-379-5646**.



PHOTO COURTESY PCTA.ORG

From Mt. Whitney southward, the Sierra Nevada slopes away to the south gradually, exchanging alpine peaks for the less lofty ridges of the Kern Plateau and forming the northern border of the Kern River Valley. But make no mistake, the Kern Plateau is still very much the high country, with many areas between 8,000 and 10,000 feet above sea level. The weather can change swiftly at such altitudes, so travelers are warned to bring plenty of warm clothes and have food and water in their vehicles.

BLACKROCK RANGER STATION

This high country ranger station is on Sherman Pass Road, about halfway between Kernville and Highway 395. Information about most high country adventures is available at the Blackrock



High Country



PHOTO COUTESY FS.USDA.GOV

PACIFIC CREST TRAIL

The Pacific Crest Trail spans 2,650 miles from Mexico to Canada and is considered the crown jewel of America's scenic trails. Year after year thousands of equestrians and hikers enjoy this beautiful national treasure. Pacific Crest Trail passes through Walker Pass (elevation 5,246 ft.), the eastern gateway to the Kern River Valley. North bound travelers will find the trail becomes a natural, wildly scenic realm with no roads. The trail hugs the crest through the Chimney Peak Wilderness before crossing the South Fork of the Kern River near Kennedy Meadows. Largely through the efforts of hikers and equestrians, the Pacific Crest Trail was one of the first scenic trails in the National Trails System authorized by Congress in 1968, and was dedicated in 1993. Some people hike the trail in sections, while others choose to hike every mile in a single trip. Do plenty of research before hitting the trail for a trip. A book about the PCT is highly recommended. Internet researches can help, but the books are based on years of information and research specifically to help hikers find a personalized trip. There are even loop trails that use the PCT and then move to other trails in the area, for a nice day hike back to your starting location. Parts of the trail can be covered with snow much of the year, while other areas do not have natural water sources. For current weather and trail conditions, contact the U.S. Forest Service office in Kernville at 760-376-3781 or Lake Isabella 760-379-5646.



PHOTO COURTESY SARAH ROOFFENER

SHERMAN PASS

Sherman Pass Road runs between Hwy 395 and the Kern River, north of Kernville. This paved road crosses the South Fork of the Kern River, traveling through breathtaking mountain meadows and beautiful forest glades for more than 10,000 ft. elevation. The pass is closed during winter. For current road conditions call the U.S. Forest Service office in Kernville at 760-376-3781.

DOMELAND WILDERNESS

Known for its many granite domes and unique geological formations, the original Domeland Wilderness was given some additions in 1984. One of these additions was a large basin surrounded by rock formations. Then in 1994, approximately 36,300 acres on the east side were added. The Wild & Scenic South Fork of the Kern River, one of America's wildest waterways, crosses the Wilderness through deep gorges with bold rock outcroppings and domes interspersed with meadows. The Pacific Crest Trail crosses the area north-south and follows the river for about nine miles. Other trails, suitable for foot and horse, give access mostly to the northern section, leaving the south and east seldom explored because of the difficulty of travel. There are about 45 total trail miles.



PHOTO SUBMITTED

KVHD Kern Valley Healthcare District
"We Care For You"

We Care. Trust Us To Care For You.

24 HOUR EMERGENCY CARE

379-2681

25-Bed Acute Care Unit
Skilled Nursing 74-Bed Unit
Physical/Occupational Therapy

379-2681

SKILLED NURSING CENTER
6412 Laurel Ave., Mt. Mesa

Surgical Services
Radiology
Laboratory
Cardiac/Pulmonary

379-1791

RURAL HEALTH CLINIC
4300 Birch Ave., Mt. Mesa

Monday - Friday 7am - 7pm

379-6106

MESA CLINICAL PHARMACY
12608 Mt. Mesa Rd., Mt. Mesa

Monday - Friday 9am - 6pm

6412 LAUREL AVE., MT. MESA

Events



PHOTO COURTESY SHANNON RAPOSE



PHOTO COURTESY DEBBIE TEFILO



PHOTO COURTESY GRACE HARRISON



PHOTO COURTESY JENNIFER FANKHAUSER

January - February

Some of you may find yourselves asking, "What do we do today? Where can we go? What can we see?" Read the following pages to discover the extraordinary, fun-filled, and entertaining special events in the Kern River Valley all year long. No matter what your schedule or interests, there will always be an opportunity to be a part of the happenings during your stay.

We hope to see you there!

WHISKEY FLAT DAYS - FEBRUARY -

The period of January through April has some of the most exciting events of the entire year. One of the biggest, Whiskey Flat Days, stampedes into Kernville

on President's Day weekend. Whiskey Flat Days began in the late 1950s in order to increase tourism during the winter season, and ever since folks have been flooding the valley to kick up their heels and relive a little of the Old West. The festival is crowned by the election of Mayor of Whiskey Flat. With something for everyone, Whiskey Flat Days offers children and adults a parade and rodeo, as well as a carnival, music, arts and crafts show, dancing and much more during the long President's Day weekend. Mark your calendar and join us for a weekend of relaxation and festivities that celebrate the valley's rich heritage in gold mining. For more information, call the Kernville Chamber of Commerce at **760-376-2629**.

March - June

ISABELLA LAKE FISHING DERBY

- MARCH -

The dates for the 29th annual Isabella Lake Fishing Derby have been set and promises to be the best event yet. The dates are March 24, 25, 26, 2018. Entry fees are only \$30.00 for individuals and \$65.00 for families of husband, wife, and three children.

Registration will be open on Tuesday, January 2, 2018 and can be done online at <http://www.kernrivervalley.com>, or by application available at the Kern River Valley Chamber of Commerce at PO Box 567, 6416 "D" Lake Isabella Blvd. Lake Isabella, Calif. Phone 760-379-5236. Applications received before March 1, 2018 will be eligible for the early bird prize of \$500.00.

Prizes for the Derby include \$10,000 for the longest trout if caught while wearing the official T-shirt (\$5,000 without), \$1,500 for the second, \$1,000 for the third, \$500 for the fourth and \$250 for the fifth. The Derby is also offering the very popular Bobber Bowl prize for anglers to win up to \$300, and the Lake Trout Lotto splitting the pot for the longest trout guess.

The Blind Bogey Draw of ten \$100 prizes per day for each of the three days of the Derby will also return. Any trout brought into Derby Headquarters will be eligible for the Draw.



PHOTO COURTESY WORLDKAYAKBLOGS.COM

KERN RIVER FESTIVAL WHITewater RACES

- APRIL -

The Kern River Festival celebrates Whitewater fun on the upper Kern River in Kernville. Sponsored by the non-profit Kern Valley River Council, the annual event is the oldest kayaking race in California. The festival was started in 1963 by Kernville resident, the late, Tom Johnson. Tom is a former Olympic coach and one of the founding fathers of modern whitewater rafting. Many festival races are open to pros and non-pros (beginners, intermediate and juniors) some are open to experts only. For more information contact the Kern Valley River Council at 760-376-3745. Details are available on the website Kernfestival.com, and the Facebook page: Kern River Festival

CLASSIC CAR SHOW

- MAY -

On this day, vintage autos and trucks, made before 1976, line Riverside Park in Kernville for the Kern River Valley Rotary Club's annual Classic Car Show, where spectators are dazzled by awesome paint jobs, custom interiors, and creative motor work. The Rotary Club also offers airplane rides and a karaoke contest. Craft vendors line Circle Park and Riverside Park. Other activities take place throughout the day, including several drawings and live music. For more information, call 760-379-3671.



PHOTO COURTESY:
LAKE SARAH ROOFFENER
TROUT: GINKANDGASOLINE.COM
CAR: ELISE MODROVICH

June - September



WHITewater WEDNESDAY - JUNE -

The Kernville Chamber of Commerce and local rafting outfitters sponsor this special day of whitewater rafting trips offered at discount prices. All proceeds are earmarked for the Kernville Chamber to fund many other events held during the year. This is a great opportunity to have a fun day, and a wonderful way for the first timer to get "all wet!" For more information, call 760-376-2629.

HAVILAH DAYS - JUNE -

In the 1860s Havilah was one of Kern County's major mining communities of the Gold Rush era; in fact, it was the county seat until the distinction was transferred to the city of Bakersfield in 1874. The place name comes from the biblical story describing Havilah as a place where there is gold. The town once boasted 20,000 residents. Only a few private homes remain, but the residents there have built replicas of the courthouse (which doubles as a museum) and the one-room schoolhouse (which doubles as a meeting hall and lending library). Each year, the Havilah Centennial Association remembers its history at Havilah Days, a laid back celebration of small-town rural life. Food and beverages are on sale during the day. The car show is open to all years and makes. To get to Havilah, drive south on Caliente-Bodfish Road. Havilah is only 10 miles south of Lake Isabella. For more information, call 661-867-2552.

FIREWORKS SHOW - JUNE -

Every year, the Kern River Valley Chamber of Commerce works hard at coordinating and putting on a spectacular fireworks show watched by thousands of visitors and locals who gather around the lake for the dazzling and patriotic display. The annual show is scheduled to take place on Saturday June 30. The fireworks are released from Engineers Point, located between the Main and Auxiliary Dams. For more information, call 760-379-5236.

FIREWORKS EXTRAVAGANZA BBQ AND COOK OFF SHOW DOWN - JUNE -

Saturday June 30, 10:00 a.m. to 4:00 p.m. Tank Park, Lake Isabella. Family fun, kids games, water slides, Tri-tip sandwiches, hot dogs, snow cones and more. Pie and watermelon eating contests, music, vendors and a Barbeque Cook off Show Down judged by those in attendance. Proceeds benefit the local fireworks. For info call the KRV Chamber 760-379-5236

RUBBER DUCKY RACES - AUGUST -

On August 25, the Kern Valley Exchange Club is sponsoring their annual Rubber Ducky Races. The races guarantee the event will be held on a beautiful day full of fun in Riverside Park in Kernville. Rubber ducks are marked and dropped into the Kern River at the starting point (the bridge at the north end of Riverside Park) and race to the finish line just before the river turns south at the end of the park. A deep pit BBQ lunch is served alongside other fun activities. There will be face painting for the younger crowd, as well as a dunk tank, kids games, concessions, music, drawings, and more. Ducks are usually sold out prior to race day, but reservations are available. Calling ahead of time will ensure that participants aren't caught quack-less. There are also specialty races sold on race day. For more information, call 760-379-6440, 760-379-7785, or 760-379-3667 ext. 15.

SIERRA FALL ARTS & CRAFTS SHOW - SEPTEMBER -

The Sierra Art Show is one of the valley's longest running events. Sponsored by the Kern River Valley Art Association, the show features art and crafts from many talented artisans. On Labor Day weekend every year, Circle Park is filled with photos, paintings, jewelry, candles, flowers, and much more for browsers and buyers alike. For more information, call 760-379-6162.

October - December



PHOTO COURTESY SARAH ROOFFENER

TURKEY VULTURE FESTIVAL - SEPTEMBER -

During this time of year, majestic turkey vultures, (large migratory birds), can be spotted around the valley just about anywhere you look, if you keep an eye on the sky. In the eastern part of the valley you can usually see giant “kettles,” or aerial formations, of turkey vultures. But if what you want is a real bird’s eye view of these amazing creatures, visit the Kern River Valley Preserve during the festival and check out these birds at their favorite hangout. For more information, call 760-378-3044 or go to www.kern.audobon.org/local/sanctuary/tvfest.

“KICK’ BACK IN KERNVILLE” ROD RUN - OCTOBER -

Kernville’s Rod Run began over 30 years ago as an opportunity for car enthusiasts to show off their beautifully restored cars. The Rod Run has grown in popularity, and is one of the biggest events of the year in the Kern River Valley. The love of classic cars is the common denominator, attracting more than 350 exhibitors last year alone. Thousands of spectators come from areas throughout California, as well as from out of state. Kernville’s many beautiful inns, motels, and restaurants provide a full service community to make this weekend a great family event. Every year, the cars are flashier and more impressive, but one thing never changes: the friendliness of the exhibitors who generously display the beautiful interiors, big engines, and candy paint jobs to the public. For more information, call 760-376-3133.



PHOTO COURTESY KERNRIVERSIERRA.COM

KERNVILLE FAT TIRE FESTIVAL

- OCTOBER -

Mountain biking around Kernville offers some epic trails in the Sequoia National Forest! We are again stepping away from our traditional Kernville Fat Tire Festival gathering, to offer mountain bike enthusiasts our laid back style of riding with no pressure, loads of scenery, sweet trails and just a tiny bit of challenge. With our annual Shuttle-fest mountain biking event, we are offering all you Cannell Trail and Just Outstanding die-hards a chance to ride multiple trails, each day, within this three-day event.

During this special October, three day, mountain biking event, you will be able to ride Just Outstanding Trail twice in one day, if you would like or, ride Cannell Trail in the morning and then Just Outstanding in the afternoon!

Mountain and River Adventures at 800-861-6553 or log on to www.mtnriver.com to download a registration form and obtain specific trail ride information.

LAKE ISABELLA CHRISTMAS PARADE

- NOVEMBER -

The Saturday following Thanksgiving is always set aside for the annual Christmas parade, sponsored by the Kern River Valley Chamber of Commerce. The time is set, so folks visiting for the holiday can enjoy the parade as well. The parade starts at 11:00 a.m. at the post office on Lake Isabella Blvd. and winds up at the intersection of Crestview Ave. and Lake Isabella Blvd. Santa Claus always makes an appearance. For more information, call the Kern River Valley Chamber of Commerce at 760-379-5236.



PHOTO COURTESY GRACE HARRISON

CHRISTMAS IN KERNVILLE & CLASSIC CAR PARADE

- DECEMBER -

Each year, Circle Park is transformed into a winter wonderland with Santa’s Village at the center of the “Christmas in Kernville” celebration. Part of this month-long event is the Christmas Classic Car Cruise and Parade of Giving. Hot rods decorated in Christmas lights parade around the streets of Kernville, collecting new toys from residents and parade-goers. For more information, call the Kernville Chamber of Commerce at 760-376-2629.

Places to Eat



Lunch & Daily Specials

Pizza • Calzones
Pastas • Sandwiches
Soup & Salads

WE DELIVER!
"We Toss'em They're Awesome" **760-379-5605**
5640 Lake Isabella Blvd. | Lake Isabella

Looking for Something Out of the Ordinary?



Starlite
WINE BAR • TASTING ROOM • TAPAS

YELP & FACEBOOK Reviewers have given us ★★★★★
"The Kern River Valley has waited a long time for a place like this."
"The best food & wine in the Valley. Period."

Check Out Our Website and Facebook Page for Menu/ Event Details & Updates! www.starliteloungewinebar.com

See what all the fuss is about at 13423 Sierra Way in Kernville!
Call for Info, To-Go Orders or Reservations at 760-376-1895

DAM KORNER RESTAURANT

Serving the Valley for over 40 years!




6303 Lake Isabella Blvd. (At the 4-Way Stop) • 760-379-8770



Ewings
ON THE KERN

Open 7 Days 7am-9pm

~ Serving ~
BREAKFAST • LUNCH • DINNER

760-376-2411
125 Buena Vista Drive • Kernville

Cheryl's Diner

In The ♥ Of Kernville

Just For You...
Super Food & Friendly Too!
Celebrating 32 Years!

Patio Dining
Good Home Cooked Food
Pies & Desserts Cooked On Premises



11030 Kernville Road • Kernville • 760-376-6131

Places to Play

29TH ANNUAL ISABELLA LAKE FISHING DERBY

MARCH 24, 25 & 26, 2018

1st Place \$10,000 Trout Prize
If wearing the 2018 T-Shirt

See details on ad, page 23

SPONSORED BY: • Berkeley • Western Outdoor News •
• Ewings • Sierra Gateway •
• Freeman Lakeside Realty • Fish Taco •
• Shannon Grove • True Value •




For more information & reservations, call:
800-457-2082
or 760-376-3745

Raft Trips • Kayak Tours
Tube Shuttles & Rentals

www.sierrasouth.com

SIERRA SOUTH

FRENCH GULCH MARINA

across Pioneer Point Campground
on beautiful Lake Isabella
(760) 379-8774

Personal Watercraft Rentals • Pontoon & Fishing
Boat Rentals • Boat Moorings • Fishing Supplies
Gas & Oil • Beer, Soda, Water, Snacks & More!



reservations@northforkmarina.com
www.northforkmarina.com



NORTH FORK MARINA
get wet!

Personal Watercraft Rentals
Pontoon & Fishing Boat Rentals
Boat Moorings • Fishing Supplies
Gas & Oil • Beer, Soda, Water,
Snacks & More!

next to Tillie Creek Campground
on Lake Isabella
760 376-1812

Showtimes/Info (760) 376-3030



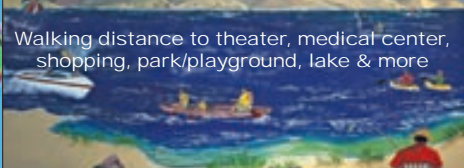
REEL CINEMA

Now, A Digital Movie Theatre
Mention this ad for \$1 off Snacks!
Great Movies, Great Prices!

 6742 Wofford Heights Blvd,
Wofford Heights, CA 93285

Places to Stay

SHADED KNOLL MOBILE & RV PARK
 Centrally located between Kernville and Lake Isabella
 Family Park with full hookups



Walking distance to theater, medical center, shopping, park/playground, lake & more

760.549.0460 • 35 E. Evans Rd. Wofford Heights, CA



888-372-6399
760-376-6483

3 Rafting Companies on Site

Covered Wagon Camping Available

16 Sites with Water & Power

11252 Kernville Rd. • Kernville
 www.frandy.net • camping@frandy.net

Paradise Cove Lodge
 Steakhouse & Motel

Scenic Lake View Dining • Lake View Motel Rooms

Dining Wednesday - Sunday
 Open Year Round • Banquet Facilities

Steaks • Seafood • Cocktails

10700 Hwy 178 (3 miles E of dam)
 760-379-2719 • paradisecovelodge.com



OUTDOOR FUN for the whole family

KERN RIVER SEQUOIA RV RESORT

Camp Sites • Cabins • RV Rentals

Phone: 760-376-6119
 www.KRSRVResort.com

Camp • Hike • Fish • Explore... or just Relax

Kernville Vacation Home
 ENJOY A PEACEFUL WEEKEND GETAWAY
 YEAR ROUND, IN KERNVILLE, CA.



1550 sqft Home • Sleeps 8 • Handicap Friendly • Fully Equipped
 1/2 mile from downtown • 1/2 block from Kern River
 Call Carolyn for more information at 661-319-4957



Microwaves • Refrigerators
 Flat Screen TVs • Free Wi-Fi
 Most Rooms Have River View
 Continental Breakfast
 All Major Credit Cards Accepted

RIVER VIEW LODGE
 760-376-6019
 #2 Sirretta Street, Kernville 93238
 www.riverviewlodge.net

Corral Creek



8 miles north of Kernville, California
 in the beautiful Sequoia National Forest

50 Mountain Hwy 99 • Kernville, CA 93238
 760-376-3601 • www.corralcreeklodge.com

SEQUOIA LODGE Free Wi-Fi & DirecTV



Fish from our banks!

16123 Sierra Way
 Kernville, CA 93238
 760-376-2535
 www.sequoialodge.net

AAA Approved VISA Mastercard

Lake Isabella RV Resort



Mobile Homes & RV space available
 \$300-\$350/month
 Call about move-in specials!
 760-379-2046
 11936 Hwy 178 Lake Isabella, CA 93240 • LakeIsabellaResort.com

CAMP KERNVILLE

THE ONLY PRIVATE BEACH ON THE KERN!
 FULL HOOK UP AND TENT SITES • ON SITE RV STORAGE

www.CAMPKERNVILLE.com
 Located steps from downtown Kernville

760-376-2345
 24 Sirretta Street • Kernville, CA

OPEN year round

Realty Services



A full service property Management Company

Office: 6435 Lake Isabella Blvd • Mail: PO Box 2919, Lake Isabella
 BRE#00982861 • 760-379-5479 Fax: 760-379-8685
 isabella@ablepm.com • www.ablepm.com

Century 21 Lake Isabella Realty, Inc.

MLS B Dre#01214756

Located On The Boulevard
 DOWNTOWN LAKE ISABELLA

6069 Lake Isabella Blvd. • 760.379.3684
 www.century21lakeisabella.com



We may deal in Real Estate, but our real business is People.

760-549-9579

11113 Kernville Rd, Kernville, CA 93238

Groceries, Sporting Goods and Fuel




SIERRA GATEWAY
MUSIC • SPORTING GOODS • FUEL

Spirit Fuel • Deli • Sporting Goods • Groceries
Pizzas • Deli Sandwiches • Chicken • Meat Packs

14606 Hwy 178 • South Lake • 760-378-2207
13432 Sierra Way • Kernville • 760-376-2424

Wofford Liquor



FASTrip

Wines from all over the world!

Sun-Thur. 7am-10pm • Fri & Sat. 7am-11pm
760-376-3606 • 5981 Wofford Blvd. Wofford Heights

CrossroadS
MINI MART

155 & Lake Isabella Blvd. • Lake Isabella
760-379-8170

ATM & Major Credit Cards Accepted



Mt. Mesa Shell
McCray & Hwy. 178
760-379-3747

Local History, Antiques, Collectibles and Gifts

THE MOTHER LODE
ANTIQUES • COLLECTIBLES • GIFTS & BOOKS



OPEN DAILY
8 Tobias (Circle Park)
KERNVILLE
760-376-3384

"Something For Everyone!"

Come Visit Our
Fishing & Natural History Museum



Open Sat. & Sun. 10am - 4pm 14415 Sierra Way (1 mile N of Kernville)

US Naval Museum of Armament and Technology

See some of the technology that keeps us safe and secure.

Visit Our Works of Art



MONDAY - SATURDAY • 10:00 A.M. TO 4:00 P.M.
CLOSED SUNDAYS & MAJOR HOLIDAYS

Call 760 939-3530 for information about base access.
Visit our website to donate to the future off base building
www.chinalakemuseum.org • United Way Member Agency #13086

Maturango Museum
Northern Mojave Visitor Center • Death Valley Tourist Center



OPEN DAILY
10 am - 5 pm
Excluding major holidays

100 E. Las Flores Ave., Ridgecrest, CA 93555
760-375-6900 • www.maturango.org

KERN VALLEY MUSEUM
Exhibits • Gift Shop • Art Gallery

Museum Hours ~ Thurs. - Sun. • 10am-4pm

FREE Admission

Visit Our Website For Events & More!
www.kernvalleymuseum.org
49 Big Blue Rd. • Kernville • 760-376-6683

"Nuui Cunni" NATIVE AMERICAN CULTURAL CENTER

Gift Shop • Museum • Library
Native American Arts & Crafts
Classes • Demos • Events & More!

OPEN TO THE PUBLIC

WED. - SAT. 9am-3pm
Winter hours may vary
Call for Kitchen hours

2600 Hwy 155 • Lake Isabella
at French Gulch Rec Area
760-549-0800

www.nuucunni.com • nuucunni@earthlink.net

Clubs and Organizations



We're Here All Year!
- California's Best Kept Secret -

**KERN RIVER VALLEY
CHAMBER OF COMMERCE**
6416-D Lake Isabella Blvd • Lake Isabella, CA 93240
KernRiverValley.com 760-379-5236



**KERNVILLE
CHAMBER OF
COMMERCE**
11447 Kernville Road, P.O. Box 397, Kernville, CA 93238
1-866-537-6845 • www.gotokernville.com



Give us a call or email us if you are interested in joining us and becoming part of the solution!

keepersofthekern@gmail.com
www.keepersofthekern.org
keepersofthekern - FB pg
760-376-2963 or 360-324-8178

*"One Person Can Make A Difference...
Together We Can Make It Right!"*

Media

KERN VALLEY SUN
The Valley's #1 Choice For Hometown News

760-379-3667

6416-A Lake Isabella Blvd. • Lake Isabella
www.kvsun.com • www.facebook.com/kernvalleysun



KERN RIVER RADIO
102.5 KCNQ 104.5 KRVQ 1140 KVLI
Kern River Country Timeless Rock AM News-Talk

760-376-4500
14 Sierra Dr. Ste. A Kernville, CA 93238

Health Insurance - It's the LAW
Individual • Family • Medicare

Harry P. Thal Insurance Agency



760-376-2100
CA Lic.# 0621106



Other Services

**R.-J. SMITH
CONSTRUCTION**

New Homes
Room Additions
Insured
References
Free Estimates

ronsmith47@gmail.com
Ron Smith • 760-379-6440
Lic.# 333664

True Value
Destination True Value®

True Value Lake Isabella
Old Towne Plaza 6050 L.I. Blvd.
Phone: 760-379-4250 • Mon-Sat 7-6, Sun 8-5

Builder's Mart Mt. Mesa
12301 Hwy 178
Phone: 760-379-5697 • Mon-Fri 7-6, Sat & Sun 8-5



Open 7 Days
Service & Alterations • Mon. - Fri. 8am - 6pm
Drop & Go - In by 8 out by 5

13426 Sierra Way (On the River) • Kernville • 760-376-8855

- ESCAPE THE ORDINARY -

SAY YES TO NEW ADVENTURES

WWW.GOTOKERNVILLE.COM

Come Join Us... Dining ♦ Drinks ♦ Views

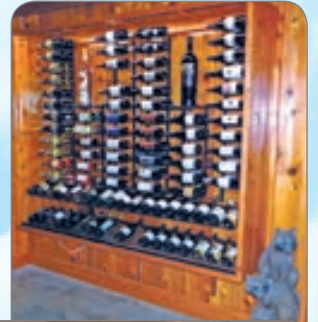
BREAKFAST • LUNCH • DINNER



**Breakfast 7-11am • Lunch 11am-4pm
Dinner 4-9pm • 7 Days A Week**

***Prime Rib Served Friday & Saturday
plus Daily Specials***

PATIO DINING • BANQUET FACILITIES
PRIVATE PARTIES • 2 FIREPLACES
5 LARGE SCREEN TV'S



*FOREIGN & DOMESTIC BEER
FINE WINES • COCKTAILS*



*Everything Is
New, Except
For The View!*



*Visa, Mc,
AmEx,
Discover
Accepted*

760-376-2411

*Reservations accepted
for parties of six or more*



**125 Buena Vista Dr.
KERNVILLE**

JAMES SIERRA GATEWAY

MARKETS - SPORTING GOODS - FUEL

1929 - 2018

Open 7 Days
7am - 9pm

THREE LOCATIONS TO SERVE YOU

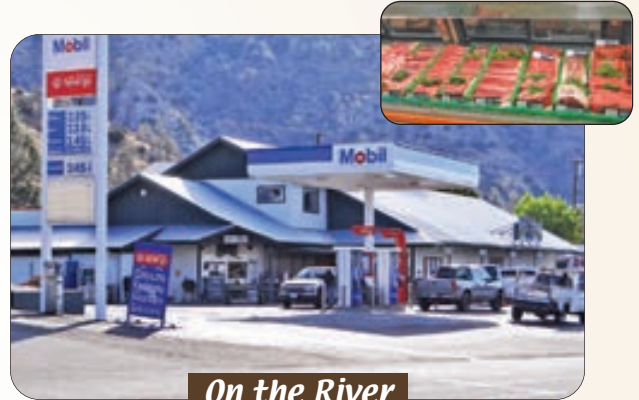
Winter
Hours Vary

Groceries • Hot & Cold Deli Department • Liquor Department - Fine Wines & Imported Beers • Fresh Produce
Full Service Meat Department • Sporting Goods Department • Live Bait • Hunting & Fishing Licenses
Lake Permits • Seasonal Miscellaneous Clothing & Foot Wear • Ammo • Camping Supplies & Much More!



*"Serving The Kern
River Valley for Four
Generations"*

Something For
Everyone!
BEER CELLAR
Large Variety of
WINE & LIQUOR



On the River

13432 Sierra Way, Kernville
760-376-2424



On the Lake

14606 Hwy 178, Southlake
760-378-2207



Sporting Goods & Fuel

14604 Hwy 178, Southlake
760-378-1315



OPEN 7 DAYS

Service & Alterations • Mon. - Fri. 8am - 6pm • Drop & Go ~ In by 8 out by 5
13426 Sierra Way (On the River) • Kernville • 760-376-8855