

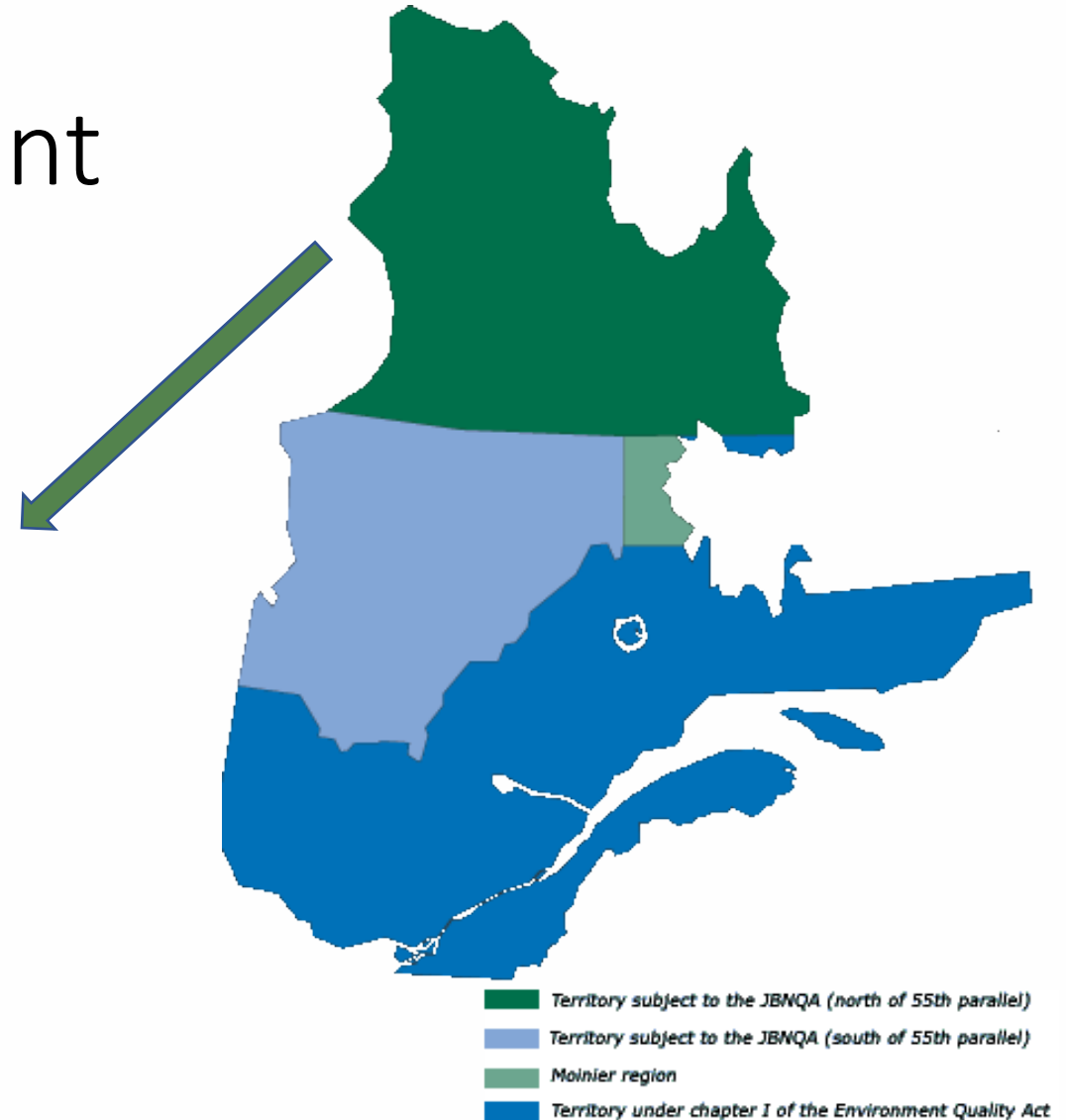
Innavik Hydroelectric Project

Environmental and Social Assessment Procedure

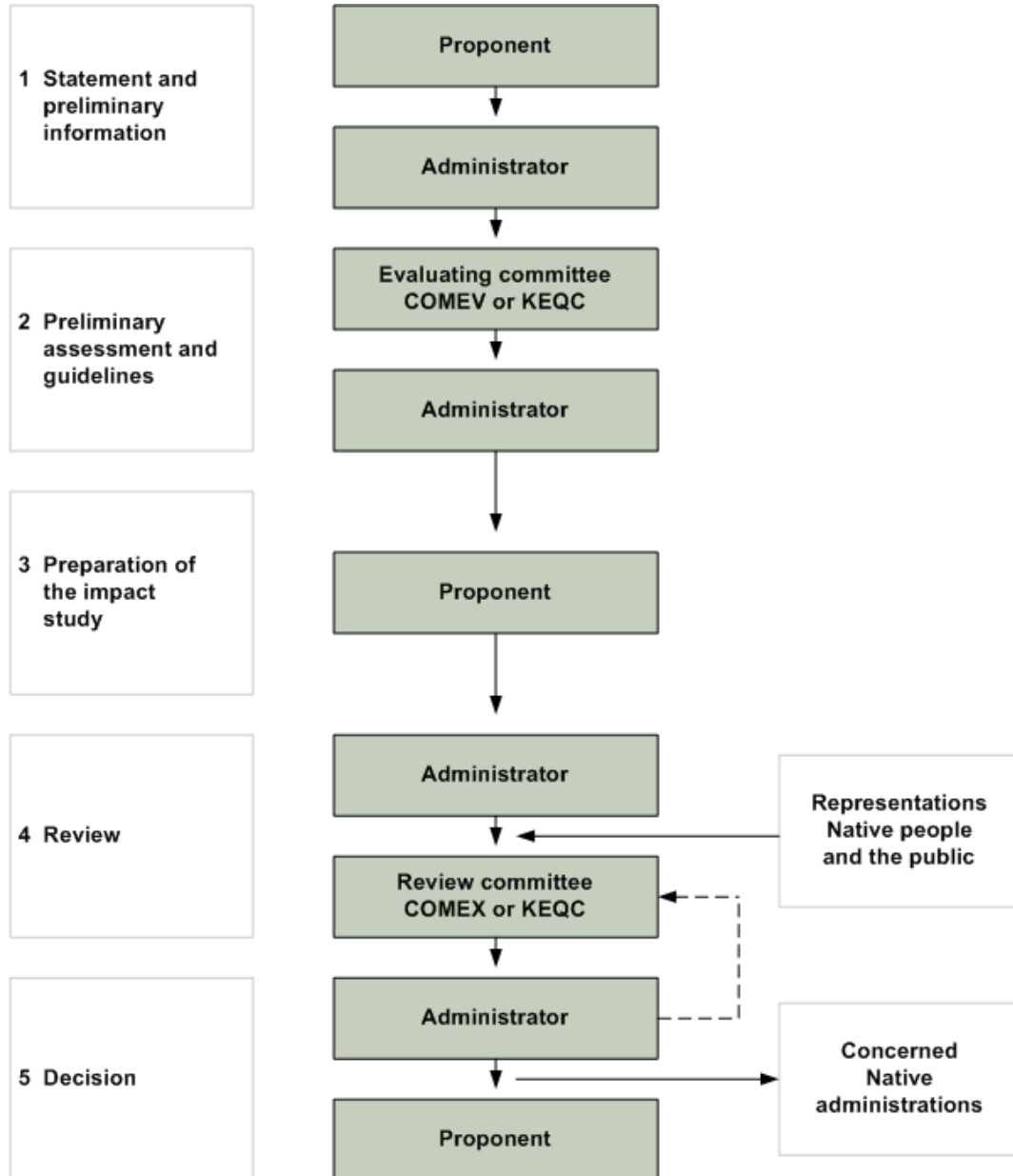
Environmental Assessment of Northern Projects

North of the 55th parallel, governed by

- James Bay and Northern Quebec Agreement (JBNQA)
- Environment Quality Act (MELCC)



Five-step Process



MELCC, 2020

Innavik Schedule:

- 2010 Impact Assessment Report
- 2016 Review by KEQC, 4 series of questions from agencies, departments, organisms
- 2018
- 2019 Public Hearings
- 2019 Decision with 13 conditions

Impact Assessment Content

Biological and physical Environment

- Wildlife and habitat
- Vegetation
- Watercourses and lakes
- Wetlands
- Climate
- Geology

Human Environment

- Land use
- Water quality
- Socioeconomic aspects
- Quality of life and health
- Cultural context
- Heritage and archaeology
- Landscape
- Noise

Public Hearings held by the KEQC in March 2019



To listen to the comments, concerns and questions of the Nunavimmiut, more particularly the Inukjuamiut

- Recreation Centre
- Local Radio Hotline