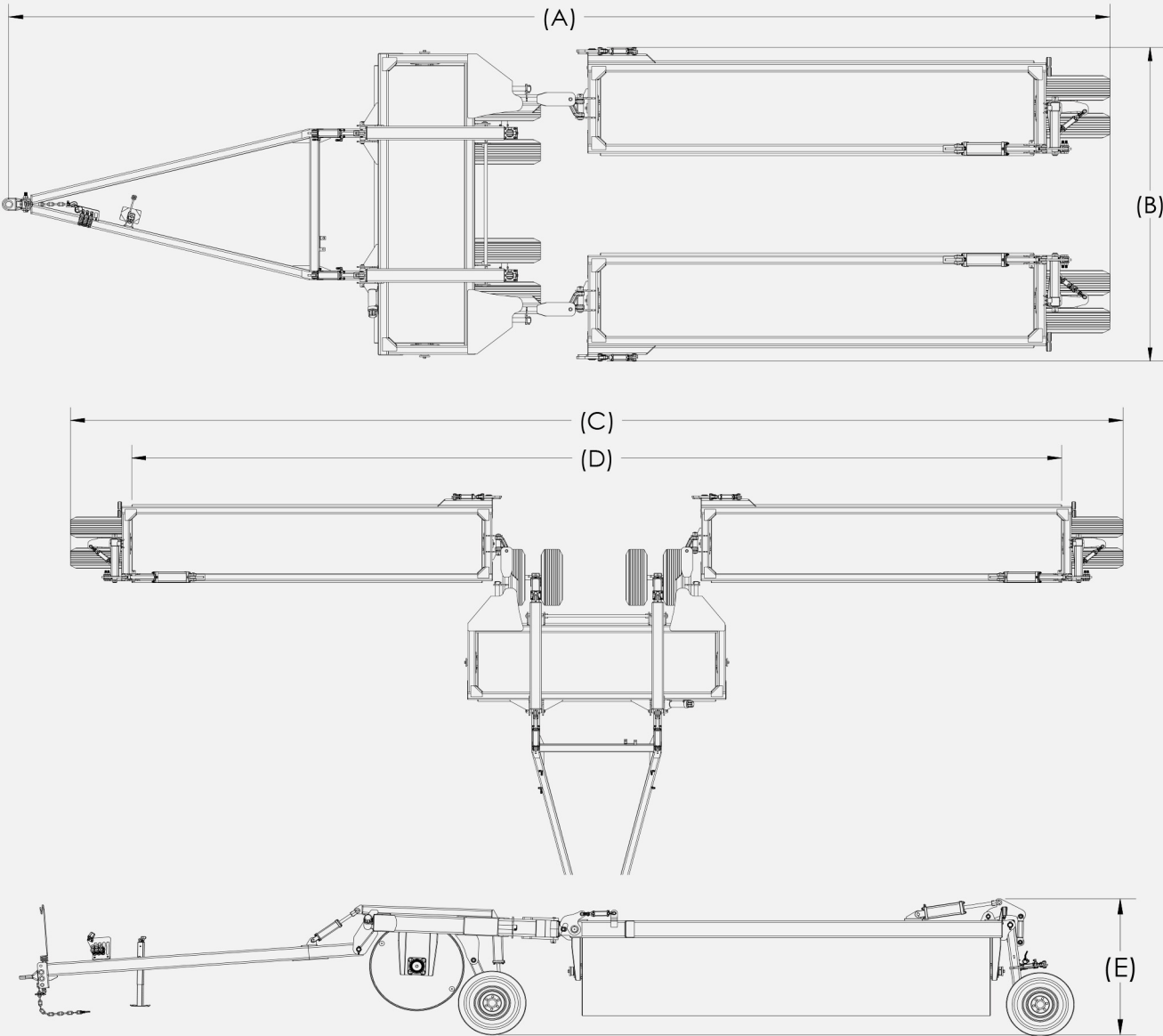


3-PLEX LAND ROLLER
SPECIFICATIONS

MANDAKO



	Unit Size					
Dimension	30'	34'	40'	42'	45'	50'
Transport Length (A)	34'	36'	39'	40'	41'-6"	44'
Transport Width (B)	11'-7"	11'-7"	11'-7"	11'-7"	11'-7"	11'-7"
Overall Width (C)	33'-6"	37'-6"	43'-6"	45'-6"	48'-6"	53'-6"
Working Width (D)	30'	34'	40'	42'	45'	50'
Overall Height (E)	5'-5"	5'-5"	5'-5"	5'-5"	5'-5"	5'-5"
Hyd. Req. (@2800PSI)	5 GPM (19 LPM)	5 GPM (19 LPM)	5 GPM (19 LPM)	5 GPM (19 LPM)	5 GPM (19 LPM)	5 GPM (19 LPM)
Hyd. Req. (Ports)	3	3	3	3	3	3
Horsepower Req.	120+	136+	160+	168+	180+	200+
Approx. Weight (lbs/ft) 42" x 5/8" Drum	530	507	495	488	469	465
Drum Size	36" x 1/2" W 42" x 5/8" W 42" x 3/4" W					
Tire Size	ST235/80R16E 10 Ply	ST235/80R16E 10 Ply	ST235/80R16E 10 Ply	ST235/80R16E 10 Ply	ST235/80R16E 10 Ply	ST235/80R16E 10 Ply

LANDROLLER
3-PLEX

MANDAKO

SOLID DESIGN...PROVEN PERFORMANCE





WHY USE A **MANDAKO** LANDROLLER?

What initially started as a rock roller has evolved into a multi-use tool that's now considered a valuable farm asset. Landrollers smooth the field surface by pushing down rocks and debris, allowing the cutter bar to operate effectively and reduce the risk of rock damage. Create better germination with optimal soil-to-seed contact. Increase yields on your farm with a Mandako Landroller!

SEEDING - Rolling the field pre-plant creates an even seed bed for today's high-precision planters and air seeders. Consistent depth control is now a reality. Landrollers create better germination with optimal soil-to-seed contact for cereals and pulses. Pulse crop growers consistently find a 1-4 bushel per acre yield increase on rolled fields.

SPRAYING - Reduce the wear and tear on your sprayer and other equipment with smoother fields.

HARVESTING - Keep sickle bar knives and guards from premature wear by keeping them out of the dirt. Avoid time-consuming and expensive repairs to your combine by keeping rocks out. Harvesting lodged crops becomes easier (and less stressful) knowing the field was rolled after planting.

TILLAGE - Using a Landroller on corn stalks after harvest crushes the stalks enabling them to decompose faster. Reduce the chance of causing damage to your tires or tracks by flattening the stalks.

HAY/FORAGE - Using a Landroller in the spring can smooth out your field and help level rodent mounds.

Sizes

3-Plex Landrollers are offered in the following configurations:

30', 34', 40', 42', 45', 50', & 60'

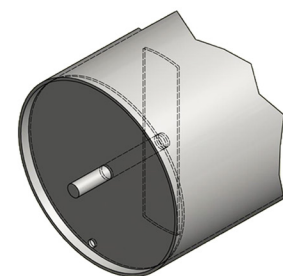
*Custom Sizes are available.

Standard Features

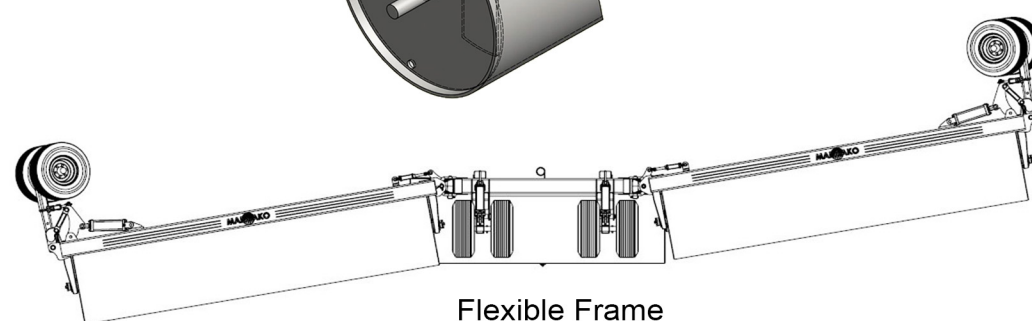
- Dual Hydraulic Rear Wheel Steer
- Hydraulic Floating Hitch
- 42" x 0.625" (5/8") Drum (Optional 42" x 3/4")
- 3" Drum Shaft With 3" HD Bearing
- 8" x 4" x 3/8" Frame Tubing
- Ductile Cast Knuckles
- Easy Hookup With Colour Coded Hydraulic Handles
- Steel Reinforced Corners
- LED Light Kits
- 1-1/2" Knuckle Pins
- 235/80/R16 10-Ply Highway Tire
- Category 3 Pintle Hitch
- Fillable Drums (add water for increased weight)
- Hydraulic Wing Lock
- 2" - 3" Drum Overlap
- Colour: Mandako Green or Black

Optional Upgrades

- 280/70/R15 Implement Tire (10-Ply)
- Clevis Hitch Insert
- Mechanical Acre Counter
- Mud Scraper Kit



3" Shaft Extends Inside Drum With Support Plate



Flexible Frame



Dual Steer Axle



Mechanical Acre Counter (OPTIONAL)



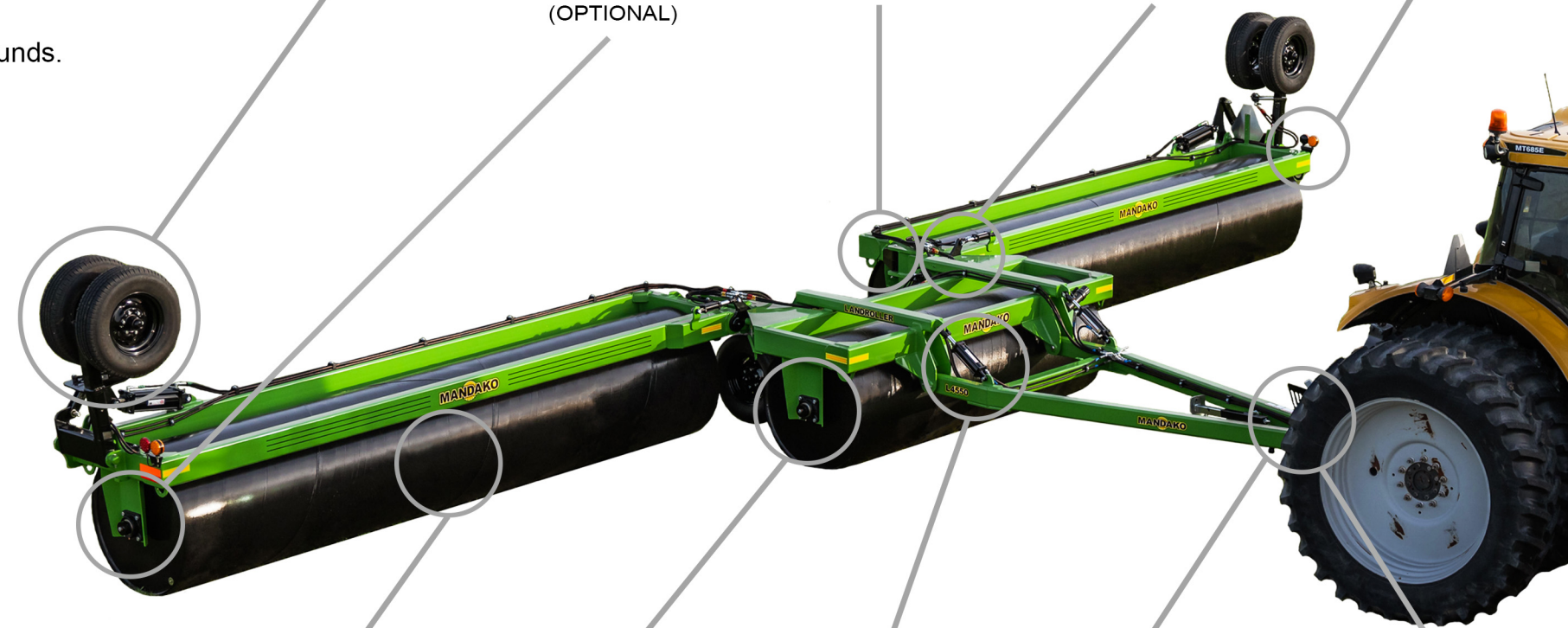
Ductile Cast Knuckle



Hydraulic Wing Lock



LED Light Kit



42" Diameter x 0.625" Drum Wall



3" HD Drum Shaft/Bearing



Hydraulic Floating Hitch



Color Coded Hydraulic Handles



Clevis Hitch Insert (OPTIONAL)

