

**VISIT [SHIPMATRIX.COM](http://SHIPMATRIX.COM) TO  
REQUEST A FREE DEMO OR CALL  
724.934.9400 TO SPEAK  
WITH A SOLUTIONS SPECIALIST!**

## REQUEST A FREE DEMO TODAY

ShipMatrix, through our suite of shipment visibility solutions, makes it possible for shippers of all sizes to dramatically reduce their annual spending by up to 15% through advanced data analytics and professional services. Request a demo to learn how you can ship smarter with the power of ShipMatrix behind you.

## PROVIDE 3-MONTHS OF DATA FOR ANALYSIS TO SEE HOW YOU CAN:

- ✓ Gain data insights that will prove useful in carrier relations (RFP).
- ✓ Aggregate shipping data from across all shipping origins.
- ✓ Measure carrier on-time performance.
- ✓ Eliminate wasteful spending.
- ✓ Improve the customer experience with enhanced status notification.
- ✓ Make smarter, faster decisions to boost performance of your shipping operation.
- ✓ And, so much more...

## CARRIERS SUPPORTED



### REGIONAL CARRIERS

### INTERNATIONAL CARRIERS

### LAST MILE DELIVERY COMPANIES

## SHIPMATRIX SJ CONSULTING GROUP, INC.

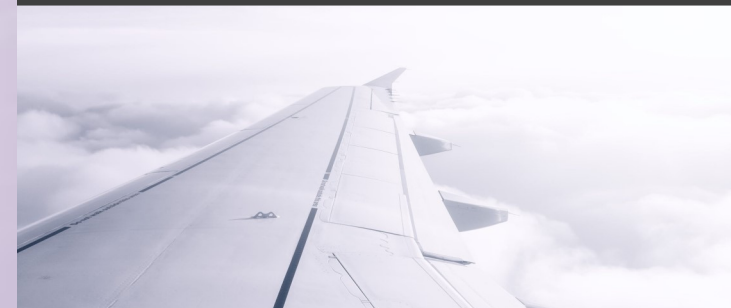
181 Thorn Hill Road, Suite 100  
Warrendale, PA 15086

 [ShipMatrix.com](http://ShipMatrix.com)

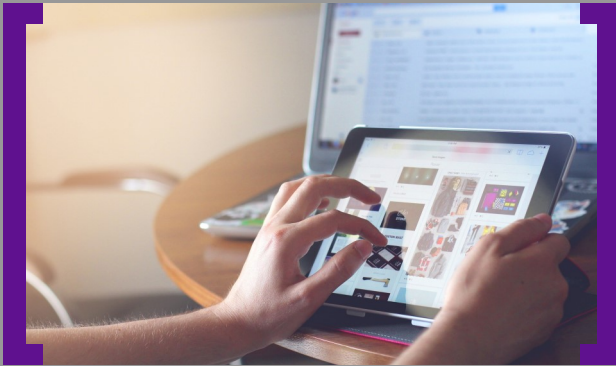
 [info@shipmatrix.com](mailto:info@shipmatrix.com)

 724.934.9400

# SJC ShipMatrix



## PRACTICAL SOLUTIONS TO MANAGE YOUR TRANSPORTATION SPEND & CUSTOMER EXPERIENCE



# ShipMatrix

## PARCEL ANALYTICS PLATFORM

LEVERAGE GREATER SHIPMENT VISIBILITY TO BETTER MANAGE SHIPPING OPERATIONS AND CUSTOMER EXPERIENCE

"I BELIEVE THE UNIQUE BLEND OF INDUSTRY INSIGHT, FLEXIBILITY, AND EXECUTION CONTINUES TO DISTINGUISH SHIPMATRIX AS THE PREMIER SHIPMENT VISIBILITY TECHNOLOGY."

GARMIN

**\$35  
BILLION**

AMOUNT SAVED BY SHIPPERS SINCE 1999! CALL US TO LEARN HOW!

**\$5  
BILLION**

TOTAL PARCEL SPEND PROCESSED IN LAST 12 MONTHS.

**1,000+  
CUSTOMERS**

INCLUDING RETAILERS, MANUFACTURERS, DISTRIBUTORS, ETC.

**90,000**

SHIPPING LOCATIONS SUPPORTED BY SHIPMATRIX.

**15  
MINUTES**

WILL SAVE YOU 15% ON TRANSPORTATION SPEND.



### MEASURABLE RESULTS

**OVER \$5 BILLION PROCESSED ANNUALLY**

ShipMatrix delivers unmatched results for organizations of all sizes and across all industries. With greater shipment visibility comes the opportunity to reduce your annual parcel spend while recouping your investment in ShipMatrix in less than three months.



### UNMATCHED INDUSTRY EXPERTISE

#### ACCESS TO UNPARALLELED EXPERTISE AND INSIGHTS

The ShipMatrix team has decades of industry experience as founders of FedEx Ground and advisers to DHL, UPS, TNT, USPS, and many regional carriers, which is leveraged for our customers to improve their shipping operations and to provide unmatched customer experience.



### CUSTOMER EXPERIENCE SOLUTIONS

#### MANAGING THE EXPECTATION OF ORDER ARRIVAL

Our hands-on experience in the parcel industry gives us a unique ability to understand the nuances of 2,700+ exceptions for impact on delivery commitment. It allows us to provide the most accurate ETA during the delivery journey to ensure an exceptional delivery experience for the consumer.