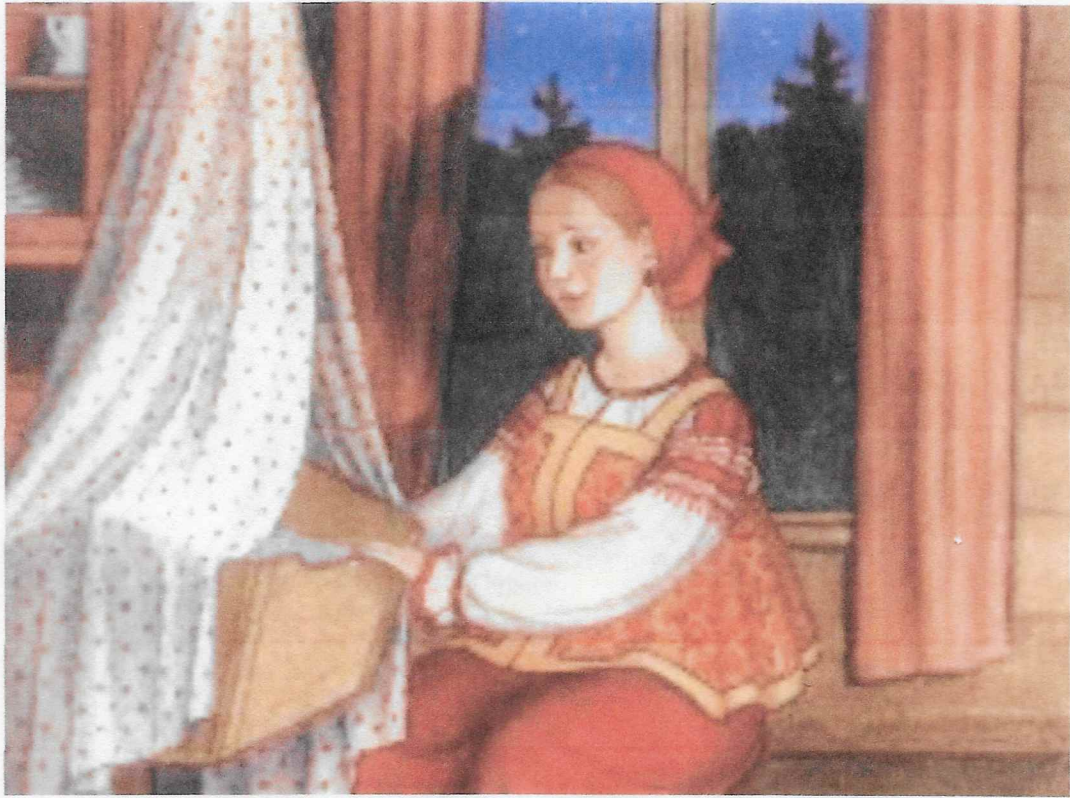


Lullaby



Musical score for piano, consisting of three systems of music. The key signature is one sharp (F#) and the time signature is 4/4. The score includes dynamic markings (*p*, *mf*, *f*) and fingering numbers (1-5) above the notes.

System 1: Treble clef, starting with a piano (*p*) dynamic. The melody begins with a descending line of notes: G4 (finger 5), F#4 (finger 3), E4 (finger 2), D4 (finger 1). The bass line consists of sustained chords: G2-B2 (finger 1), G2-B2 (finger 5).

System 2: Treble clef, starting with a mezzo-forte (*mf*) dynamic. The melody continues with notes: D4 (finger 5), C#4 (finger 3), B3 (finger 2), A3 (finger 1), G3 (finger 2), F#3 (finger 1), E3 (finger 2), D3 (finger 1). The bass line continues with sustained chords: G2-B2 (finger 1), G2-B2 (finger 5).

System 3: Treble clef, starting with a piano (*p*) dynamic. The melody continues with notes: G3 (finger 5), F#3 (finger 3), E3 (finger 2), D3 (finger 1), C#3 (finger 2), B2 (finger 1), A2 (finger 2), G2 (finger 1). The bass line continues with sustained chords: G2-B2 (finger 1), G2-B2 (finger 5).