

JOB DESCRIPTION

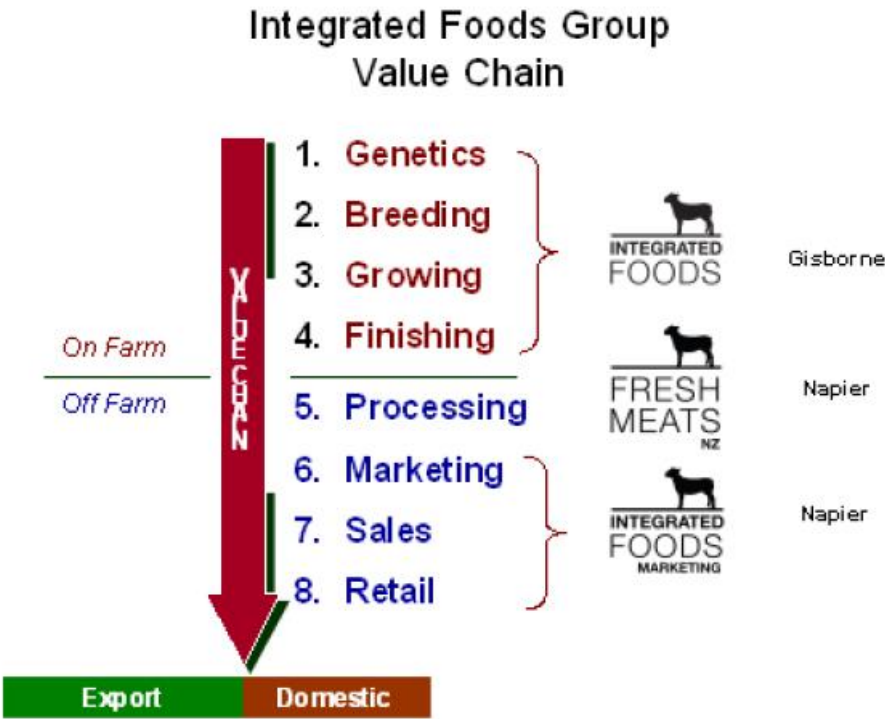
POSITION TITLE: LIVESTOCK SYSTEMS TECHNICIAN
LOCATION: **PRIMARY:** GISBORNE **SECONDARY:** OTHER IFL WORK SITES
REPORTS TO: GENERAL MANAGER - FARMING
DATE: NOV 2017

ORGANISATIONAL OVERVIEW

The Integrated Foods Group (the “Group”) is responsible for the delivery of an integrated food model linking farmed sheep products to an expansive domestic and global food market. The goal of the integrated food model is to engineer focused production systems to produce products that meet specific and unique customer requirements.

The Group intends to be involved in the total value chain to provide branded differentiated products to customers directly.

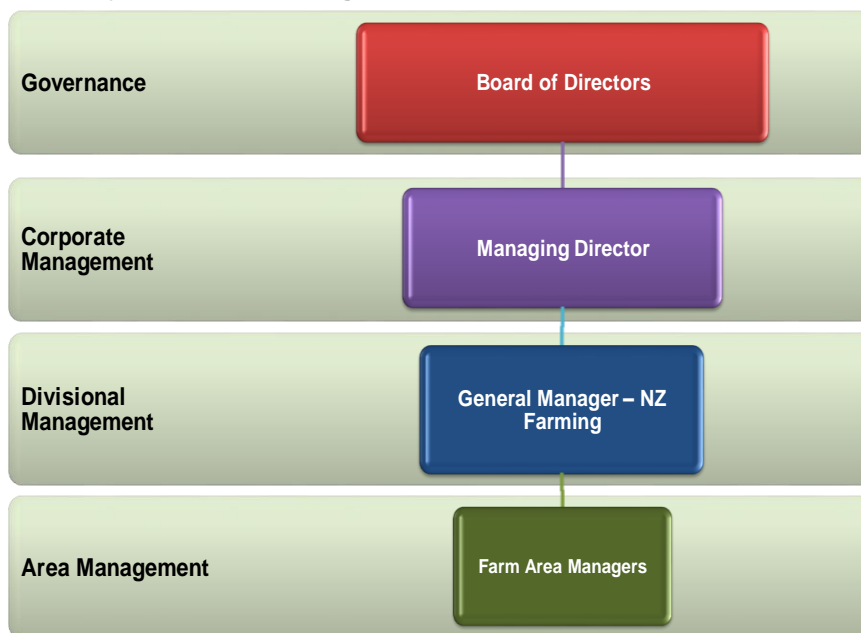
The value chain can be illustrated as follows:



POSITION MISSION STATEMENT

To assist the General Manager - Farming and Farm Managers to maximise farm based production by providing technical support and data analysis across the Integrated Foods Group to aid business management decisions

Integrated Foods Group
Farm Systems Reporting Structure



POSITION DESCRIPTION

The primary purpose of this position is to provide technical support and data analysis across the Integrated Foods Limited group to aid business management decisions.

KEY RESPONSIBILITIES	ACTIVITIES	MEASURES
ELITE TEA EWE FLOCK	<ul style="list-style-type: none"> • Co-ordination of all procedures related to the Elite Tea Ewe Flock: <ul style="list-style-type: none"> ○ A.I, ET, Semen collection ○ Synchrony programs ○ Lambing ○ Docking ○ Feeding and feed trials as directed ○ Comprehensive record keeping and data entry 	
INFORMATION SYSTEMS	<ul style="list-style-type: none"> • Maintenance of data collection systems on farm to aid business decision making • Assist in the monitoring and maintenance of existing systems to ensure accuracy and alignment of information • Work closely with Farm Managers and staff to ensure effective communication/ information from and to farms • Input to sessions with farm staff/ managers to enhance development e.g. technology and reporting sessions • Investigate technical solutions to improve efficiency on farm • Input to one stop shop for livestock related reporting systems 	<ul style="list-style-type: none"> • Sound data analysed to and recommendations made to aid decision making • Skill enhancement sessions with staff minimum of 2 per year
LIVESTOCK	<ul style="list-style-type: none"> • Comply with livestock welfare, husbandry and nutrition policies, procedures and statutes. • Promptly notify any abnormalities in relation to livestock numbers and/or condition • Provide reports and promptly meet all requests regarding livestock • Handles and treat stock in accordance with acceptable animal husbandry techniques and practices • Actively monitor livestock health & welfare, to maintain good health & condition • Assist in enhancing the quality of the livestock resource of the incorporation 	<ul style="list-style-type: none"> • 100% compliance • Changes notified promptly • Information provided promptly • 100% compliance • Records accurate and up to date • Records accurate and up to date • Early notification of health & condition concerns
FARM TECHNICIAN (across all IFL)	<ul style="list-style-type: none"> • Collecting, inputting, collating and analyzing data and reporting on pasture growth and feed demands • Farmax models to be monitored and updated regularly • Technical support including testing, collecting, 	<ul style="list-style-type: none"> • Analysis accurate and consistent across IFL • Early notification • Accurate and timely information/ forecasting

	<p>inputting, collating and analysing data to assist in business management decisions. This includes but is not limited to:</p> <ul style="list-style-type: none"> • Faecal egg counting • Facial eczema monitoring and spore testing • Measurement of pasture covers, pasture growth rates • Management of on farm compliance • Weigh and monitor body condition scoring of ewes • Monitor replacement sheep and cattle weight gains and performance utilizing available technology and software programs. • Oestrus synchronization programs (sheep and cattle) 	<ul style="list-style-type: none"> • 100% compliance • Audit programmes complete in full, in time to spec • Early notification of health, weight or condition variances • Up to date systems
HEALTH & SAFETY	<ul style="list-style-type: none"> • Adhere to all health & safety policies, statutes and practice • Support implementation of Health & Safety culture in workplace • Attendance, participation and contribution to health & safety meetings & initiatives • Report all incidents, accidents, near misses and hazards according to H&S policies and procedures • Manage and implement audit processes on an annual basis for Cattle yards, Woolsheds, and Sheepyards 	<ul style="list-style-type: none"> • 100% compliance • Positive participation & contribution • Attendance and feedback • Report accurately as soon as practicable • 100% compliance
TEAMWORK	<ul style="list-style-type: none"> • Contribute and participate constructively in order to accomplish individual, team and organisation goals • Contribute to team problem solving and org wide initiatives as required • Assist in planning and undertaking workload, allocation and instructing personnel as required • Assist to ensure all relevant company policies are understood and adhered to • Maintain regular communication as required with all levels of staff and management 	<ul style="list-style-type: none"> • Feedback • Feedback • Feedback • Colleagues, visitors & contractors understand policies & procedures as relevant to them
CONTINUOUS IMPROVEMENT	<ul style="list-style-type: none"> • Support a culture of continuous improvement • Actively seek more efficient ways of performing tasks to enhance productivity • Develop, research and/or adopt new technology and techniques to improve productivity • Identify issues and improvement strategies on Farm • Committed to on-going development of self and others 	<ul style="list-style-type: none"> • Evidence of improvement • Actively seek improvement • Issues identified and solutions suggested • Evidence of on-going development/ learning

PERSON SPECIFICATION

Qualifications & Experience

Essential	Desirable
<ul style="list-style-type: none"> • Full driver's license – clean • Practical farming background 	<ul style="list-style-type: none"> • Tertiary Qualification – Agri Science or similar

Knowledge, skills and personal attributes

Essential	Desirable
<ul style="list-style-type: none"> • Sound knowledge of feed planning & monitoring • Strong analytical skills • Strong technical IT skills • Not bound by conventional thinking • Sound understanding of animal genetics and nutrition • Professional • Good communication skills (verbal and written) • Attention to detail • Aptitude for learning and continuous development • Passionate about farm and livestock handling • Focussed on improvement • Energetic and motivated self-starter • Innovative • Health & Safety focus 	<ul style="list-style-type: none"> • Positive team player • Flexible • Conscientious and reliable • Farmax • Veterinary Technician skills, for FEC and FE monitoring