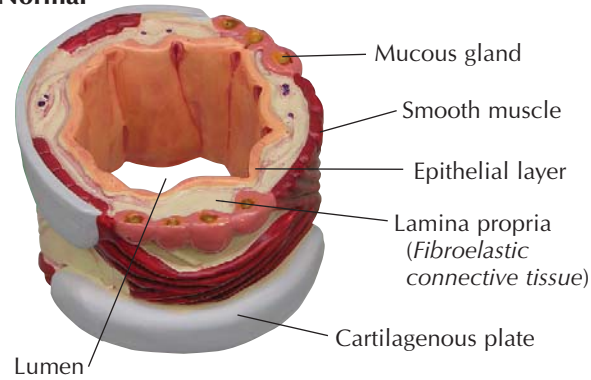
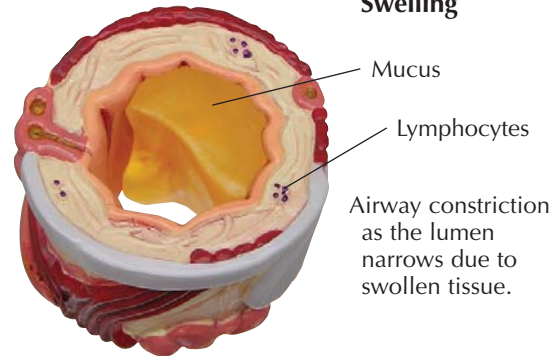


4-PIECE BRONCHUS

Normal

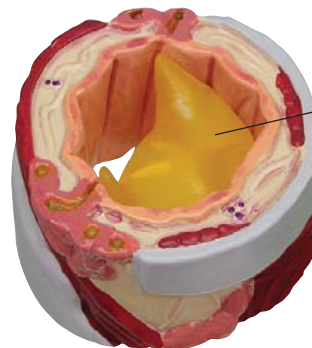


Swelling



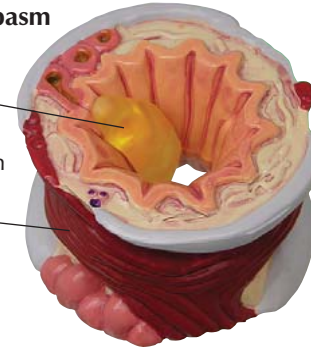
Hypersecretion

Airway constriction due to excessive mucus production. In addition to asthma, this condition is characteristic of chronic bronchitis.



Muscle Spasm

Airway constriction due to muscle contraction.



Asthma is a condition of reversible bronchial narrowing by mucosal edema (swelling), hypersecretion of mucus and/or muscle spasm. All three conditions limit the airflow and can cause wheezing, breathlessness, chest tightness, and cough.