

008



**Dean C. Logan**  
Los Angeles County  
Registrar-Recorder/County Clerk

# Official Sample Ballot

Los Angeles Unified School District  
Special Election  
June 4, 2019

**Polls open at 7 am and close at 8 pm**

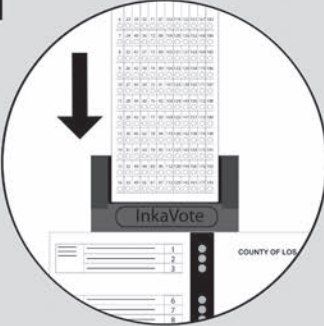
**lavote.net**



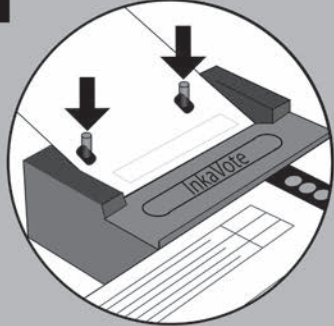
# Voting instructions

## How to vote at your polling place on Election Day

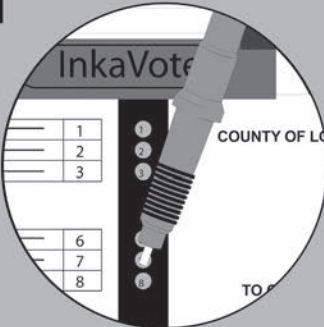
1



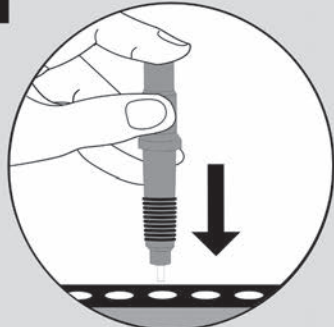
2



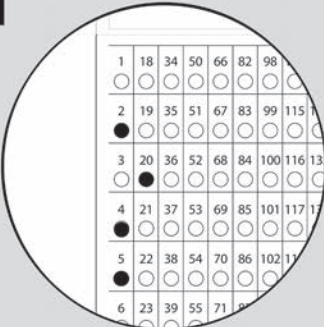
3



4



5



6





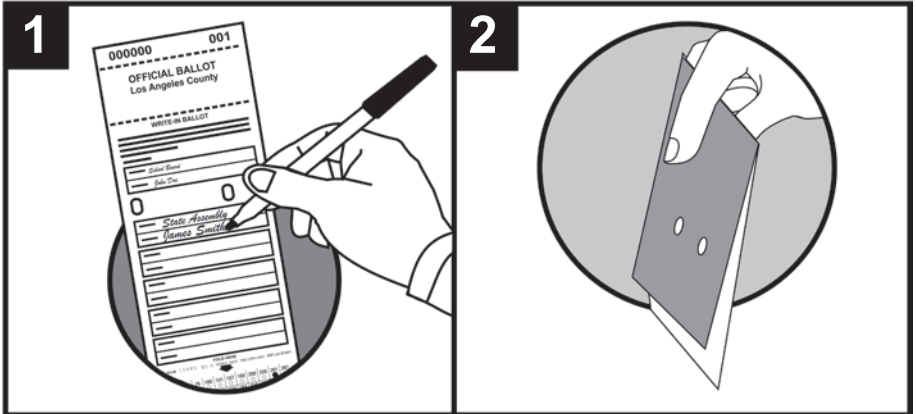
# Voting for write-in candidates

## How to vote for a person not listed on the ballot

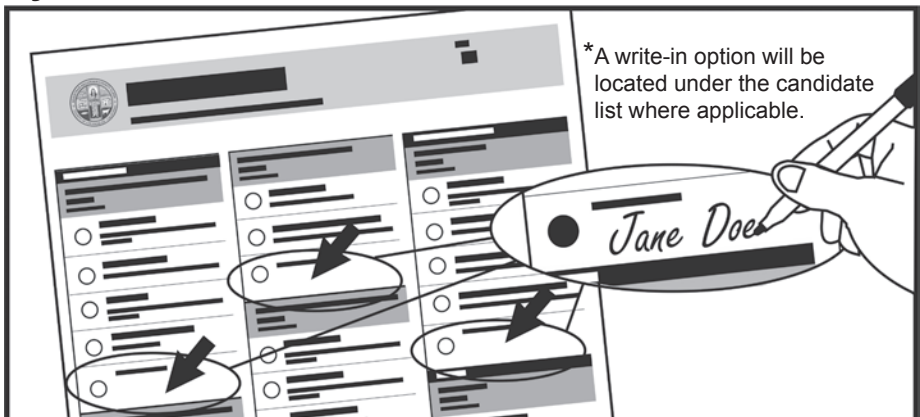
Write the name and office of the official write-in candidate in the “write-in” portion of the ballot. A list of “Qualified Write-in Candidates” is available 11 days before the election at [lavote.net](http://lavote.net). See a pollworker for a list of qualified candidates.

You may not write-in a candidate and vote for a candidate on the ballot for the same office.

## At the polling place



## By mail



**Note:** Write-in votes are not allowed for voter-nominated offices in the General Election.



# Information for voters

## Offices on the ballot

This election is to fill offices and vote on ballot measures which affect municipal, school and state legislative jurisdictions in Los Angeles County.

Review your Sample Ballot and Visit **lavote.net** to ensure you are ready for Election Day!

## Do you need assistance voting?

If a voter declares under oath that they are unable to mark a ballot the voter may receive assistance marking their ballot by two (2) persons of their selection (E.C. § 14282).



# Vote By Mail drop-off locations

## Vote By Mail ballot drop-off locations

The Registrar-Recorder/County Clerk is providing Vote By Mail drop-off locations for the June 4, 2019 Senate District 33 Special General Election (and Municipal and Special Elections).

Beginning May 7th, any voter may drop off their voted ballot at one of many convenient locations throughout Los Angeles County.

### **Before you return your VBM ballot make sure:**

- 1) Your ballot is securely placed inside the Vote by Mail envelope.
- 2) You sign the back of the Vote by Mail envelope.

For details on the program and a listing of ballot drop-off locations, please visit **[lavote.net](http://lavote.net)**.



# New Vote by Mail (VBM) materials

Los Angeles County has redesigned your Vote by mail (VBM) materials making it easier and more convenient to vote by mail.

## What's new?

### New ballot cards and envelope

- Larger, full face ballot
- Easier to read
- Easier to fill out
- Easier to understand
- No postage necessary

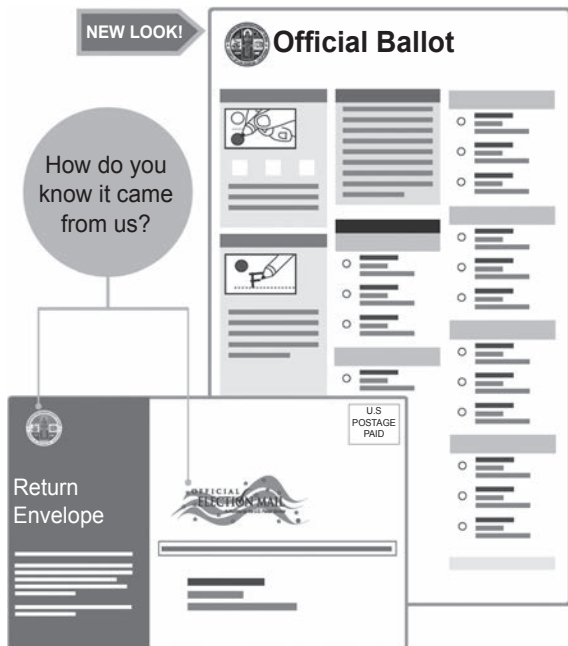
NEW LOOK!

How do you  
know it came  
from us?

### Multilingual ballots

We offer ballots  
in 12 languages.

Call our office to request  
your multilingual ballot at  
**(800) 815-2666, option 3**



### Return options

You can easily return your VBM ballot via USPS. **No postage is required.**  
In addition, you can drop it off at any voting location on Election Day or one of our conveniently located ballot drop-off locations.

**Visit [LAvote.net](http://LAvote.net) to request a VBM ballot, find a VBM ballot drop-off location or to track your VBM ballot.**



# Apply to vote by mail

## One-time Vote By Mail

You can request a ballot by mail starting 29 days before the election. Apply by doing one of the following:

- Visit **lavote.net** and submit your request online.
- Tear off and mail back the application on the back cover page of this booklet.
- Send a letter signed by the voter that includes the voter's residence address and where to send the Vote By Mail ballot:  
Registrar-Recorder/County Clerk  
P.O. Box 30450, Los Angeles, CA 90030-0450.
- Apply by calling (800) 815-2666, option 2.

## Permanent Vote By Mail

California law allows a voter to declare that they want to automatically vote by mail every election. You can request a ballot mailed to you automatically every time there is an election. This is called Permanent Vote By Mail status.

You can download an application at **lavote.net** or just check the box on the Vote By Mail application on the back cover of this booklet.

The image shows a sample of the 'Application to Vote By Mail' form. The form has several lines for text entry. A callout bubble points to a checkbox that is checked, with the text: 'I want to be a permanent Vote By Mail voter. You will automatically receive a ballot and vote by mail every election.' Another callout bubble points to a similar checkbox area at the bottom of the form, also with the text: 'I want to be a permanent Vote By Mail voter. You will automatically receive a ballot and vote by mail every election.' The form also features a '000' marking, a 'X' in a box, and a '↓' arrow with a wheelchair icon.






# Voter Bill of Rights

## You have the following rights:

1. **The right to vote if you are a registered voter.** You are eligible to vote if you are:
  - a U.S. citizen living in California
  - not currently in state or federal prison or on parole for the conviction of a felony
  - at least 18 years old
  - not currently found mentally incompetent to vote by a court
  - registered where you currently live
2. **The right to vote if you are a registered voter even if your name is not on the list.**  
You will vote using a provisional ballot. Your vote will be counted if elections officials determine that you are eligible to vote.
3. **The right to vote if you are still in line when the polls close.**
4. **The right to cast a secret ballot** without anyone bothering you or telling you how to vote.
5. **The right to get a new ballot if you have made a mistake**, if you have not already cast your ballot. You can:  
**Ask an elections official at a polling place** for a new ballot,  
**Exchange your vote-by-mail ballot** for a new one at an elections office, or at your polling place, or  
**Vote using a provisional ballot.**
6. **The right to get help casting your ballot** from anyone you choose, except from your employer or union representative.
7. **The right to drop off your completed vote-by-mail ballot at any polling place** in California.
8. **The right to get election materials in a language other than English** if enough people in your voting precinct speak that language.
9. **The right to ask questions to elections officials about election procedures** and watch the election process. If the person you ask cannot answer your questions, they must send you to the right person for an answer. If you are disruptive, they can stop answering you.
10. **The right to report any illegal or fraudulent election activity** to an elections official or the Secretary of State's office.

**If you believe you have been denied any of these rights**, call the Secretary of State's confidential toll-free Voter Hotline at (800) 345-VOTE (8683).

-  On the web at [www.sos.ca.gov](http://www.sos.ca.gov)
-  By phone at **(800) 345-VOTE (8683)**
-  By email at [elections@sos.ca.gov](mailto:elections@sos.ca.gov)





# Translated election material

## 1-800-815-2666 option 3

- **Call to receive translated election materials, polling place information or assistance with LAvote.net.**
- Զանգահարե՛ք բարգմանված ընտրական նյութեր, ընտրատեղամասերի վերաբերյալ տեղեկություններ և LAvote.net-ի հետ կապված աջակցություն ստանալու համար:
- 請致電索取已翻譯的選舉資料、投票站資訊或與LAvote.net相關的協助。
- برای دریافت مطالب ترجمه شده انتخاباتی، اطلاعات درباره محل اخذ رای یا راهنمایی در مورد LAvote.net تماس بگیرید.
- अनुवादित सामग्री, मतदान स्थान की जानकारी या LAvote.net के बारे में सहायता प्राप्त करने के लिए कॉल करें।
- 翻訳された選挙資料、投票所情報、またはLAvote.netに関する補助を受けるにはお電話ください。
- Tumawag para makatanggap ng isinaling mga materyales sa halalan, impormasyon sa lugar ng botohan o tulong sa LAvote.net.
- โทรติดต่อเพื่อรับเอกสารการเลือกตั้งที่แปลแล้วหรือติดต่อสอบถามขอความช่วยเหลือเกี่ยวกับสถานที่เลือกตั้งได้ที่เว็บไซต์ LAvote.net
- 번역된 선거 자료, 투표소 정보 또는 LAvote.net의 도움을 받으려면 전화하십시오.
- សូមទូរស័ព្ទដើម្បីទទួលសៀវភៅនៃការបោះឆ្នោតដែលបានបកប្រែហើយ រួមជាមួយព័ត៌មានទីកន្លែង បោះឆ្នោត ឬជំនួយជាមួយ LAvote.net ។
- Позвоните, чтобы получить переведенные материалы о выборах, информацию о месте голосования или помощь LAvote.net.
- Llame para recibir materiales electorales traducidos, información sobre lugares de votación o asistencia con LAvote.net.
- Hãy gọi điện thoại để nhận các tài liệu bầu cử đã được phiên dịch, thông tin của địa điểm bỏ phiếu hoặc sự trợ giúp với LAvote.net.

The Federal Voting Rights Act requires voter information, including a sample ballot booklet be available in English as well as Armenian, Chinese, Farsi, Hindi, Japanese, Tagalog/Filipino, Thai, Korean, Khmer, Russian, Spanish and Vietnamese.



# Voting Solutions for All People Vote Center Placement Project

In 2020, Los Angeles County will transition from polling places to Vote Centers. To ensure these locations are accessible to voters, the County has partnered with experts to conduct the Vote Center Placement Project.

## What we're doing

LA County will conduct a comprehensive spatial analysis to understand when voters are most likely to vote.



Accessibility



Security



Proximity



Convenience

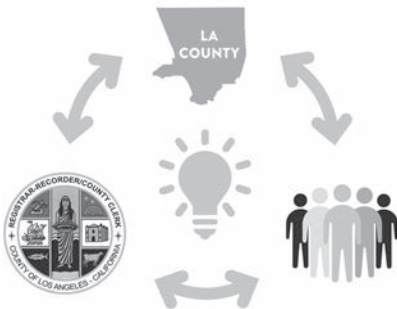


Availability

## How we get there

To ensure that community needs are addressed, the County will:

- Work directly with citizen advisory groups
- Hold stakeholder meetings
- Conduct community surveys
- Provide an interactive online platform to collect community input



## What voters get

- A new voting experience
- Convenient, secure and accessible Vote Centers available 11 days
- Vote by Mail Drop-Off Locations available for 29 days
- Mobile and Pop-up Vote Centers
- Flexibility to vote at any location in County



For more information, visit **[VSAP.lavote.net](https://VSAP.lavote.net)**

SCHOOL

LOS ANGELES UNIFIED SCHOOL DISTRICT SPECIAL ELECTION

EE	QUALITY TEACHER, CLASS SIZE REDUCTION, AND LOCAL SCHOOL SAFETY MEASURE. To retain/attract quality teachers; reduce class sizes; provide counseling/nursing/library services, arts, music, science, math, preschool, vocational/career education, safe/well-maintained schools, adequate instructional materials/supplies; support disadvantaged/homeless students; shall Los Angeles Unified School District levy \$0.16 per square foot of building improvements annually, exempting seniors/certain disability recipients, providing approximately \$500,000,000 annually for 12 years, requiring annual audits, oversight, and funding local schools?	2	YES ➡	<input type="radio"/>
		3	NO ➡	<input type="radio"/>

END OF BALLOT



# Candidate statements & measures

The following pages may contain Candidate Statements, and/or Ballot Measure Analyses, Arguments or Rebuttals.

Candidates for local offices have the option of including a statement, for which they pay a fee, unless the governing body pays the fee.

In compliance with the law, only English and Spanish language Candidate Statements are included in this booklet. Each candidate that submitted a Spanish language Candidate Statement has paid an additional fee.

Candidate Statements, Arguments or Rebuttals In Favor, or/and Against Ballot Measures are not edited or verified for accuracy by any elections officials.

Arguments and/or Rebuttals are the opinions of the authors.

## **FULL TEXT OF BALLOT MEASURE EE**

The following is the full text of the proposition to be presented to the voters by the Los Angeles Unified School District (“L.A. Unified”) in the ballot pamphlet:

### **QUALITY TEACHER, CLASS SIZE REDUCTION, AND LOCAL SCHOOL SAFETY MEASURE**

To retain/attract quality teachers; reduce class sizes; provide counseling/nursing/library services, arts, music, science, math, preschool, vocational/career education, safe/well-maintained schools, adequate instructional materials/supplies; support disadvantaged/homeless students; shall Los Angeles Unified School District levy \$0.16 per square foot of building improvements annually, exempting seniors/certain disability recipients, providing approximately \$500,000,000 annually for 12 years, requiring annual audits, oversight, and funding local schools?

#### **I. TITLE AND PURPOSE**

This measure (“Measure”) shall be known as the “Quality Teacher, Class Size Reduction, Local School Safety Measure” or as “Measure EE.” The revenues raised by this Measure shall be used to provide quality educational programs to improve achievement of students in L.A. Unified and public, non-profit charter schools authorized by law, lawfully operating, and located within L.A. Unified’s boundaries (“Local Charter Schools”).

#### **II. FINDINGS**

L.A. Unified is supported by a community that is committed to creating and maintaining a high-quality learning environment for all of its approximately 694,096 PreK-12, early education, adult education, and Local Charter School students. With the support of the community, L.A. Unified has made major progress in improving test scores and offering educational innovations and choices to students and parents to prepare students to lead responsible and productive lives in the 21<sup>st</sup> Century.

Notwithstanding L.A. Unified’s efforts to continue improving student achievement and offer educational reform opportunities, the State continues to inadequately fund our local schools. California has gone from the top of the charts in education funding and student achievement to near the bottom. Despite being the wealthiest state in the country and the 5<sup>th</sup> largest economy in the world, California ranks 44<sup>th</sup> in per-student spending. L.A. Unified needs more funding to provide safe, secure, clean, and welcoming learning and supportive working environments for everyone.

**(Continued on next page)**

## **FULL TEXT OF BALLOT MEASURE EE (Continued)**

Moreover, L.A. Unified must address its ongoing structural deficit so that it may continue offering high-quality educational programs to all of its students. A major shortfall and reductions are anticipated in Fiscal Year 2021-2022 and beyond. If not addressed, it will be necessary to implement harmful cuts to L.A. Unified programs, schools, and employees, including possible teacher and employee lay-offs and increased class sizes.

The impact of these budget reductions, necessitated by insufficient State funding, will be endured by every student, parent, school, and employee in L.A. Unified. L.A. Unified is striving to continue improving the quality and excellence of its educational programs despite the inadequate fiscal support from the State.

By enacting this Measure, the voters are providing Los Angeles public schools with an estimated additional \$500,000,000 per year. This sum will allow L.A. Unified to reduce class sizes and attract and retain quality teachers and employees to support our local schools. It will help preserve and advance gains in student achievement; important instructional programs such as science, technology, English, and math; support for low-income students, English-learners, foster/homeless students, students with disabilities, students enrolled in high-need or low-performing schools, or otherwise disadvantaged students; and clean and safe schools.

### **III. DEFINITION OF PURPOSES**

The proceeds of this Measure shall be authorized to fund the following purposes for L.A. Unified schools (PreK-12 schools, adult/vocational/career schools, and early education), including Local Charter Schools:

1. Lowering class sizes;
2. Providing equitable school nursing, library, and counseling services and other health and human services for student support;
3. Providing quality instructional programs, critical school resources and materials;
4. Retaining and attracting high-quality teachers and school employees;
5. Providing safe, secure, clean, well-maintained, supportive, and welcoming schools;
6. Providing schools with necessary administrative services; and

**(Continued on next page)**

## **FULL TEXT OF BALLOT MEASURE EE (Continued)**

7. Supporting low-income students, English-learners, foster/homeless students, students with disabilities, students enrolled in high-need or low-performing schools, or otherwise disadvantaged students.

The funding generated by this Measure to be allocated to Local Charter Schools shall be allocated based on their in-district average daily attendance (ADA). It is the intent of the Board of Education that the funding generated by this Measure shall be shared in order to benefit students attending L.A. Unified schools and in-district students attending Local Charter Schools, such that L.A. Unified and Local Charter Schools receive allocations that are reasonably equivalent based on ADA. The Board of Education shall establish rules, procedures, time requirements, and standards for the allocation and distribution of the funding, which shall include, but not be limited to, an appeal process for Local Charter Schools that requires all appeals to be presented to L.A. Unified and exhausted prior to the commencement of any judicial proceeding.

Funding generated by this Measure may not be used for:

1. Purchasing school lots;
2. Building or modernizing schools;
3. Funding legal settlements and liabilities; and
4. Operating schools outside the boundaries of L.A. Unified.

### **IV. TAX LEVY**

A special tax shall be levied on parcels in L.A. Unified, to be operative immediately upon passage, as follows.

#### **A. Tax Base and Rate**

1. The parcel tax of \$0.16 per square foot of building improvements per year shall be levied on every parcel of taxable real property. "Parcel of taxable real property" means any unit of real property in L.A. Unified that receives a separate tax bill for ad valorem property taxes from the Los Angeles County Treasurer-Tax Collector's Office. "Improved building square footage" means the square footage of all buildings or structures erected on or affixed to the land. All property that is otherwise exempt from or on which are levied no ad valorem property taxes in any year shall also be exempt from the parcel tax in such year.

**(Continued on next page)**

## **FULL TEXT OF BALLOT MEASURE EE (Continued)**

2. An exemption from payment of the parcel tax may be granted on any parcel owned by one or more persons 65 years of age or over who occupies the parcel as a principal in residence, upon application for exemption (“Senior Citizen Exemption”).
3. An exemption from payment of the parcel tax may be granted on any parcel owned by one or more persons receiving supplemental security income for a disability, regardless of age, or social security disability insurance benefits, regardless of age, whose yearly income does not exceed 250 percent of the 2012 federal poverty guidelines issued by the United States Department of Health and Human Services, who occupies the parcel as a principal in residence, upon application for exemption (“Disability Benefit Recipient Exemption”).
4. L.A. Unified shall provide the Los Angeles County Treasurer-Tax Collector a report indicating the parcel number and amount of tax for each parcel of taxable real property.

### **B. Term**

The levy shall be effective in the 2019-2020 fiscal year, and shall continue to be effective for 12 years.

### **C. Constitutional Spending Limit**

Pursuant to Article XIIIB of the California Constitution, the Constitutional Appropriations Limit of L.A. Unified shall be increased by the amount collected by the levy of this parcel tax in accordance with the applicable requirements of the state law.

### **D. Collection**

L.A. Unified may request that the parcel tax be collected by the County of Los Angeles, or other designated agency. The collection of taxes under this Measure, including the imposition of penalties, additional fees, and interest upon persons who fail to remit the parcel tax imposed by this Measure, or who fail to remit any delinquent remittance, shall be subject to and governed by the rules, regulations, and procedures authorized by law. Every penalty imposed and such interest as accrues under the provisions of this Measure shall become a part of the tax herein required to be paid to L.A. Unified.

**(Continued on next page)**



## **FULL TEXT OF BALLOT MEASURE EE (Continued)**

### **E. Severability**

The provisions of this Measure shall not apply to any person, association, or corporation or to any property as to whom or which it is beyond the power of L.A. Unified to impose the tax herein provided. If any sentence, clause, section, or part of this Measure or any tax against any individual or any groups specified herein is found to be unconstitutional, illegal, or invalid, such unconstitutionality, illegality, or invalidity shall affect only such clause, sentence, or part of this Measure and shall not affect or impair any of the remaining provisions, sentences, clauses, sections, or other parts of this Measure. It is hereby declared to be the intention of the electorate that this Measure would have been adopted had such unconstitutional, illegal, or invalid sentence, clause, section, or part thereof, not been included.

### **V. PUBLIC ACCOUNTABILITY AND OVERSIGHT**

The proceeds collected under this Measure shall be applied only for the specific purposes identified above. The proceeds shall be deposited into an account, which shall be kept separate and apart from other accounts of L.A. Unified. No later than January 1 of each year while the tax is in effect, commencing January 1, 2020, the L.A. Unified Chief Fiscal Officer shall direct the preparation of an annual independent financial audit detailing the amount of funds collected and expended during the current fiscal year, and the status of any project or description of any programs authorized to be funded by this Measure. The annual independent financial audit shall be filed with the Board of Education, and such audit shall be made public, including posting on the L.A. Unified website. Local Charter Schools shall include, in the annual audit required by their charters, a separate accounting of their use of funds they have received pursuant to this Measure, including compliance with its authorized purposes.

It is the intent of the Board of Education that there be strict oversight, transparency and accountability for the expenditure of funds generated by this Measure. Upon approval of this Measure, the Board of Education shall provide a structure and mechanisms for independent oversight.

# **IMPARTIAL ANALYSIS OF MEASURE EE**

**By Mary C. Wickham, County Counsel**

Approval of Measure EE (“Measure”) would authorize the Board of Education (“Board”) of the Los Angeles Unified School District (“District”), which placed the Measure on the ballot by Resolution, to levy a qualified special tax (“Tax”) of \$0.16 per square foot of improvements per year on each parcel of taxable real property which is wholly or partially within the District. If approved, the Tax will be levied annually beginning in the 2019/2020 fiscal year, and continue for a period of 12 years.

Proceeds from the Tax shall be used for: lowering class sizes; providing school nursing, library, and counseling services and other health and human services for student support; providing instructional programs, school resources, and materials; retaining and attracting teachers and school employees; and providing necessary administrative services. No proceeds from this Tax can be used for purchasing school lots, building or modernizing schools, funding legal settlements and liabilities, and operating schools outside the boundaries of the District.

The District shall arrange for an independent financial audit annually detailing the amount of funds collected and expended during the fiscal year, and the status of any project or description of any programs authorized to be funded by the Measure. The annual audit shall be filed with the Board. Tax proceeds shall be deposited in a separate, special account.

Any funds generated by the Measure to be allocated to Local Charter Schools shall be based on their in-district average daily attendance. The Board shall establish rules, procedures, time requirements, and standards for allocation and distribution of funding, including, but not limited to, an appeal process for the Local Charter Schools requiring all appeals to be presented to the District prior to initiating any judicial proceeding.

Any property otherwise exempt from ad valorem property taxes in a tax year shall also be exempt from the Tax in the same year. Additionally, any owner of a parcel who occupies the parcel as a principal residence who: (1) is 65 years or over; (2) receives supplemental security income for a disability, regardless of age; or (3) receives social security disability insurance benefits, regardless of age, and whose annual income does not exceed 250 percent of the 2012 federal poverty guidelines, may apply for Tax exemption. The County Tax Assessor’s determination of exemption or relief of any parcel from taxation for any reason shall be final and binding.

The Tax shall be collected by the County Tax Collector at the same time, in the same manner, and subject to the same interest and penalties applicable to ad valorem property taxes.

This Measure requires a two-thirds (2/3) vote for passage.

## **ARGUMENT IN FAVOR OF MEASURE EE**

Vote YES on Measure EE to help our neighborhood schools retain and attract quality teachers, counselors, school nurses, librarians, support staff and principals.

Measure EE is a critical part of the solution to the public education funding crisis that was highlighted by the recent teachers strike in the Los Angeles area. Teachers and school district leaders agree that Measure EE will lower class sizes and provide needed resources for local schools and pay salaries to retain and attract quality teachers and student support staff.

Even though it is the fifth-largest economy in the world, California ranks 44th in the United States in per-pupil funding for education. Measure EE is desperately needed to get our LOCAL schools the resources they need to educate our students, an investment which will help bring many more students up to grade level in math and reading.

The key to a strong economy is a well-educated workforce. By voting YES on Measure EE and investing in quality academic programs such as language arts, math, science, technology, the arts, vocational and career education, and preschool, we can provide students with safe and healthy schools and the quality education they'll need for college and a career in a competitive economy.

Measure EE is subject to strict accountability requirements. It requires that every dollar will be used to support local schools and cannot be taken by the state or federal government. Measure EE will have public oversight and requires annual independent audits to ensure that all dollars are spent as promised.

Educators, teachers, parents, and community leaders are united in support of Measure EE. Now is the time to invest in public education! We cannot afford to wait and let our schools fall further behind.

### **Vote Yes on Measure EE!**

ERIC GARCETTI  
Mayor of Los Angeles

SUSAN DOMINGO  
Los Angeles Unified School Nurse

KIRSTEN FARRELL  
2018 California Teacher of the Year

ANDRE SPICER  
Past President, Council of Black Administrators, and  
Director of Los Angeles Unified Division of Instruction

DIANNE F. HARRISON  
President, California State University, Northridge

# **REBUTTAL TO ARGUMENT IN FAVOR OF MEASURE EE**

## **Vote NO on Measure EE.**

EE is a new \$500,000,000 annual tax on all properties - homes, apartments, neighborhood shops, restaurants and grocery stores - within the LAUSD, averaging \$537 per property. EE will make everything we buy and use more expensive.

EE is UNFAIR to homeowners and renters. Landlords will be forced to pass these increased costs onto renters. This tax will make the housing crisis worse.

EE is UNFAIR to families and children. The district has been mismanaged for decades resulting in low English and math scores, declining enrollment and poor graduation rates. Rather than fix longstanding problems, reform a broken system and control run-away finances, LAUSD is asking for \$6 billion in new money from taxpayers.

EE is UNFAIR to students and teachers. EE has no guarantee that this new money will be spent in the classroom. Hidden in EE is a requirement that new revenue be used for “administrative support.” If history is a guide, LAUSD will use our tax dollars on administration, outside consultants and pension debt.

EE is UNFAIR to taxpayers. LAUSD says that it’s not getting its fair share of state education funding. Instead of having the state fix that, district bureaucrats put the whole burden on our backs.

## **Reform First!**

We need real education reform and better district management before we give LAUSD more of our hard-earned tax dollars.

This bailout scheme will only remove the pressure to reform, and nothing will improve for our children.

**EE FAILS THE TEST. Vote No!**

MARIA SALINAS

President & CEO, Los Angeles Area Chamber of Commerce

JON COUPAL

President, Howard Jarvis Taxpayers Association

RICHARD CLOSE

President, Sherman Oaks Homeowners Association

LARRY SAND

Retired LAUSD Teacher

ALICIA MARQUEZ

LAUSD Parent

## **ARGUMENT AGAINST MEASURE EE**

### **Vote NO on Measure EE.**

We all want an effective public education system for our children and support greater funding to get there. Unfortunately, LAUSD's proposed parcel tax isn't the answer. It includes no guarantee to spend our tax dollars in the classroom to improve education.

Voters approved tax increases in 2012 and again in 2016 to fund schools. LAUSD continues to shortchange our children with poor student achievement scores in English and math, low graduation rates and declining enrollment.

**DON'T BE FOOLED.** Money from the tax won't add resources to classrooms. It will be used to temporarily fix a budget deficit and to pay for LAUSD's over-promised pension and health insurance costs.

A 2018 Reason Foundation report found that over the last 15 years, the district has lost more than 245,000 students. But, the cost of the district's employee benefits have increased 44% since 2014. Its spending on outside consulting services rose 110% since 2014.

The Daily News wrote, "Parcel taxes tend to take a greater percentage of income from lower-income taxpayers." This tax "will add hundreds of dollars annually to homeowners' property tax bills and thousands of dollars to the annual expenses of supermarkets, retail stores, office buildings, warehouses and commercial facilities."

This tax includes apartment buildings. High rents will increase more!

Families are getting crushed with unaffordable housing. A new tax of 16-cents per sq.ft. of building space (\$537 per parcel average) makes matters worse.

Needlessly, this June 4<sup>th</sup> Special Election is costing taxpayers \$12.5 million.

**LAUSD WASTES OUR MONEY.**

District bureaucrats and defenders of the failed status quo want taxpayers to bail out a school district with a history of red ink, appalling education results, declining enrollment, runaway administrative hiring and exploding retirement and health care costs.

**REFORMS MUST COME FIRST.**

### **Vote NO on Measure EE.**

**TRACY HERNANDEZ**

Founding CEO, Los Angeles County Business Federation

**HON. BILL DEWITT**

Former South Gate Mayor

**MARIA SALINAS**

President & CEO, Los Angeles Area Chamber of Commerce

**JON COUPAL**

President, Howard Jarvis Taxpayers Association

**STUART WALDMAN**

President, Valley Industry and Commerce Association (VICA)

## **REBUTTAL TO ARGUMENT AGAINST MEASURE EE**

Measure EE's opponents don't dispute that we have a public education funding crisis and claim to support greater funding to get there. Despite record corporate tax breaks and profits, they oppose Measure EE to avoid actually paying for needed school funding.

Businesses who plan for the long term -- not just quick profits -- know how important quality schools are for our economic future. While a record number of students are graduating, and progress has been made in student learning, Measure EE is needed to address decades of underinvestment in public education, lower class sizes, and retain and attract quality teachers, counselors, nurses, librarians, and support staff.

Don't be misled -- Measure EE requires strict taxpayer protections and accountability. State law requires all funds be deposited into a separate account, and only be used for voter-approved purposes. While the law requires annual public reporting, Measure EE goes further, requiring annual audits by an independent firm and independent oversight.

Measure EE is fair and equitable. Homeowners will pay less than one quarter of the costs. Measure EE will NOT interfere with existing or new rent stabilization ordinances. Measure EE includes exemptions for property owners over 65 and certain disability recipients.

Measure EE would be the first time our students would benefit from a local revenue measure specifically for classroom teachers, resources, and instruction.

Vote YES on Measure EE to give our children the schools they deserve and the education that the 21st century world economy demands.

**WENDY GREUEL**

Former Los Angeles City Controller

**ROXANA TYNAN**

Executive Director, Los Angeles Alliance for a New Economy

**VAHID KHORSAND**

Former Vice Chair United Chamber of Commerce, San Fernando Valley Region

**MARIA BRENES**

Executive Director, InnerCity Struggle, and Los Angeles Unified Parent

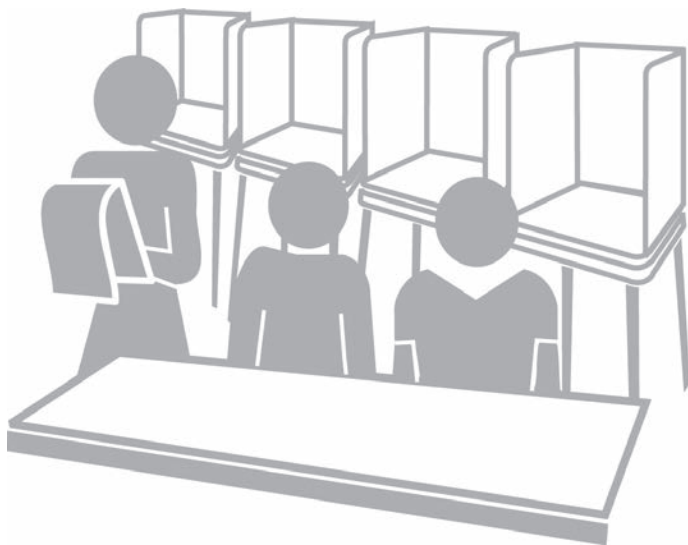
**TOI JACKSON**

Special Education Assistant



## Be a pollworker

- **Serve your community**
- **Earn up to \$240 for the day**
- **Do your part for democracy**



**(800) 815-2666, option 7**  
**lavote.net**

The page would have been blank due to printing layouts. The Registrar-Recorder/County Clerk has used this page to provide additional information.



**Save time and money!**

## **Receive your Official Sample Ballot by email**



**visit [lavote.net](http://lavote.net) to subscribe**

The page would have been blank due to printing layouts. The Registrar-Recorder/County Clerk has used this page to provide additional information.





# Election information

## Call us: 1-800-815-2666

You may obtain information about specific election services by calling toll free and selecting the option number shown for the service requested.

### Option 1

Polling place information

### Option 2

To register to vote

Verify registration or to request a sample ballot

Vote by mail ballot

### Option 3

Multilingual services

Sample ballot translations

### Option 4

Election Information

### Option 5

Voter fraud/report illegal activity

### Option 7

To become a Pollworker

**Campaign Financial Disclosure .....(562) 462-2339**

Campaign financial statement filing requirements for candidates, committees and office holders.

**TDD (Hearing Impaired) .....(562) 462-2259**

The page would have been blank due to printing layouts. The Registrar-Recorder/County Clerk has used this page to provide additional information.



# Accessible polling places

The Los Angeles County Registrar-Recorder/County Clerk's office is committed to providing all voters a private and independent voting experience. To view the Department's accessibility services, go to **lavote.net**.

## Assistive devices at every poll



Audio Ballot Booth



Wheelchair-accessible  
voting booth



20/20 black felt pen



Easy grip dexterity ball

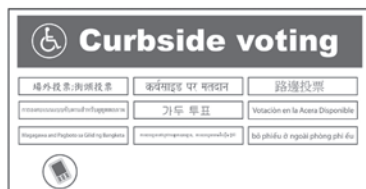


Magnifying device



Accessible parking  
signage

Curbside voting



Check for the access symbol on the back cover of this booklet to see if your polling place has an accessible entrance or call the number below.

## Important telephone numbers

General information: (800) 815-2666

Polling place accessibility: (800) 815-2666, option 7

CD/Cassette recordings: (800) 815-2666, option 3

TDD: (562) 462-2259

FP-LP01-ENG

LA 008-024

**RETURN ADDRESS**

---

---

---

**DID YOU SIGN YOUR APPLICATION?**



Place  
1st Class  
Postage  
Stamp here



**VOTE BY MAIL UNIT  
REGISTRAR-RECORDER/COUNTY CLERK  
PO BOX 30450  
LOS ANGELES CA 90030-0450**





# Application to Vote By Mail

**June 4, 2019 - Los Angeles Unified School District Special Election**  
Application must be received by May 28, 2019

Home address: \_\_\_\_\_  
(As registered)                      Number and Street                      City                      Zip Code

Mail my ballot to: \_\_\_\_\_  
(If different from above)                      Number and Street (or P.O. Box)                      City                      Zip Code

**I have not applied for a Vote By Mail ballot for this election by any other means.**

**X**

\_\_\_\_\_  
Signature of applicant (Must be signed to be processed)

\_\_\_\_\_  
Date

(    )

\_\_\_\_\_  
Daytime Phone Number

**Notice:** If the person named on the sample ballot is not at the address, please help keep the voter rolls current and save taxpayer dollars by returning this sample ballot to your mail carrier.

**000**

Registrar-Recorder/County Clerk  
P.O. Box 30450  
Los Angeles, CA 90030-0450

**Change service requested**

Polls open from 7 am to 8 pm

Your polling place is:



NON PROFIT ORG.  
**U.S. POSTAGE**  
**PAID**  
LOS ANGELES  
COUNTY REGISTRAR-  
RECORDER/COUNTY  
CLERK

Fold and detach