

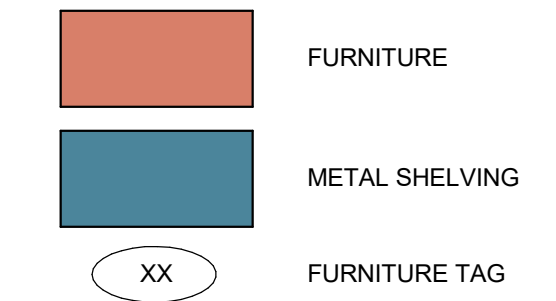
**METAL SHELVING GENERAL NOTES**

- ALL SHELVING INDICATED IS PROVIDED, DELIVERED AND INSTALLED BY THE SHELVING CONTRACTOR. SHELVING PLAN IS PROVIDED FOR REFERENCE AND COORDINATION.
- BASIS OF DESIGN: SPACESAVER CANTILEVER WELDED FRAME, UNLESS NOTED OTHERWISE. COLOR: FW FURNITURE WHITE (15)
- ALL SHELVING UNITS TO BE STANDARD 3'-0" WIDE UNLESS NOTED OTHERWISE.
- PROVIDED CORNER FILLERS AND CUT SHELVES AND FRAMES AS REQUIRED TO ACHIEVE FLUSH WALL-TO-WALL, MILLWORK-TO-MILLWORK, OR MILLWORK TO WALL INSTALLATION.
- ALL SHELVING UNITS TO BE FREESTANDING, SECURE SINGLE FACE UNITS TO ADJACENT WALL (TYPICAL) U.N.O.
- SHELVING TO BE CAPABLE OF WITHSTANDING EARTHQUAKE MOTIONS DETERMINED IN ACCORDANCE TO THE LOCAL BUILDING CODES.
- INCLUDE ALL SUPPORT BRACKETS AND ACCESSORIES FOR ATTACHMENT OF CUSTOM CABINETRY AND MILLWORK ACCESSORIES.
- SUBMIT SHOP DRAWINGS WITH COMPLETE DETAILS OF EACH COMPONENT INCLUDING LOCATIONS, SIZES AND SHAPES OF COMPONENTS, PROPOSED JOINING DETAILS, DETAILS AND LOCATIONS OF ANY INTERNAL SUPPORTS, STIFFENERS AND/OR ANCHORAGES, PROVISIONS FOR THE WORK OF OTHER TRADES, AND INSTALLATION DETAILS. PROVIDE A COMPLETE BUILDING FLOOR PLAN WITH SHELVING TYPES IDENTIFIED AND OVERALL RANGE DIMENSIONS INDICATED. CAD BACKGROUND FILE WILL BE MADE AVAILABLE BY THE ARCHITECT.
- VERIFY SHELVING UNIT LOCATION BY FIELD MEASUREMENTS PRIOR TO FABRICATION AND INDICATE MEASUREMENTS ON SHOP DRAWINGS.
- COORDINATE FABRICATION SCHEDULE WITH CONSTRUCTION PROGRESS TO AVOID DELAYING THE WORK.
- ALL FINDABLE BOOK SUPPORTS TO HAVE CORK BOTTOM.
- ALL END PANELS AND CANOPY TOPS BY SEPARATE MILLWORK CONTRACTOR. COORDINATE WITH MILLWORK CONTRACTOR FOR SCHEDULE AND REQUIRED MILLWORK ATTACHMENT ACCESSORIES FOR COMPLETE METAL SHELVING INSTALLATION.

**FURNITURE GENERAL NOTES**

- ALL FURNITURE INDICATED IS PROVIDED, DELIVERED AND INSTALLED BY THE FURNITURE CONTRACTOR. FURNITURE PLAN IS PROVIDED FOR REFERENCE AND COORDINATION.
- REFER TO FURNITURE PROJECT MANUAL FOR FURNITURE INFORMATION AND QUANTITIES.

**SYMBOL LEGEND**

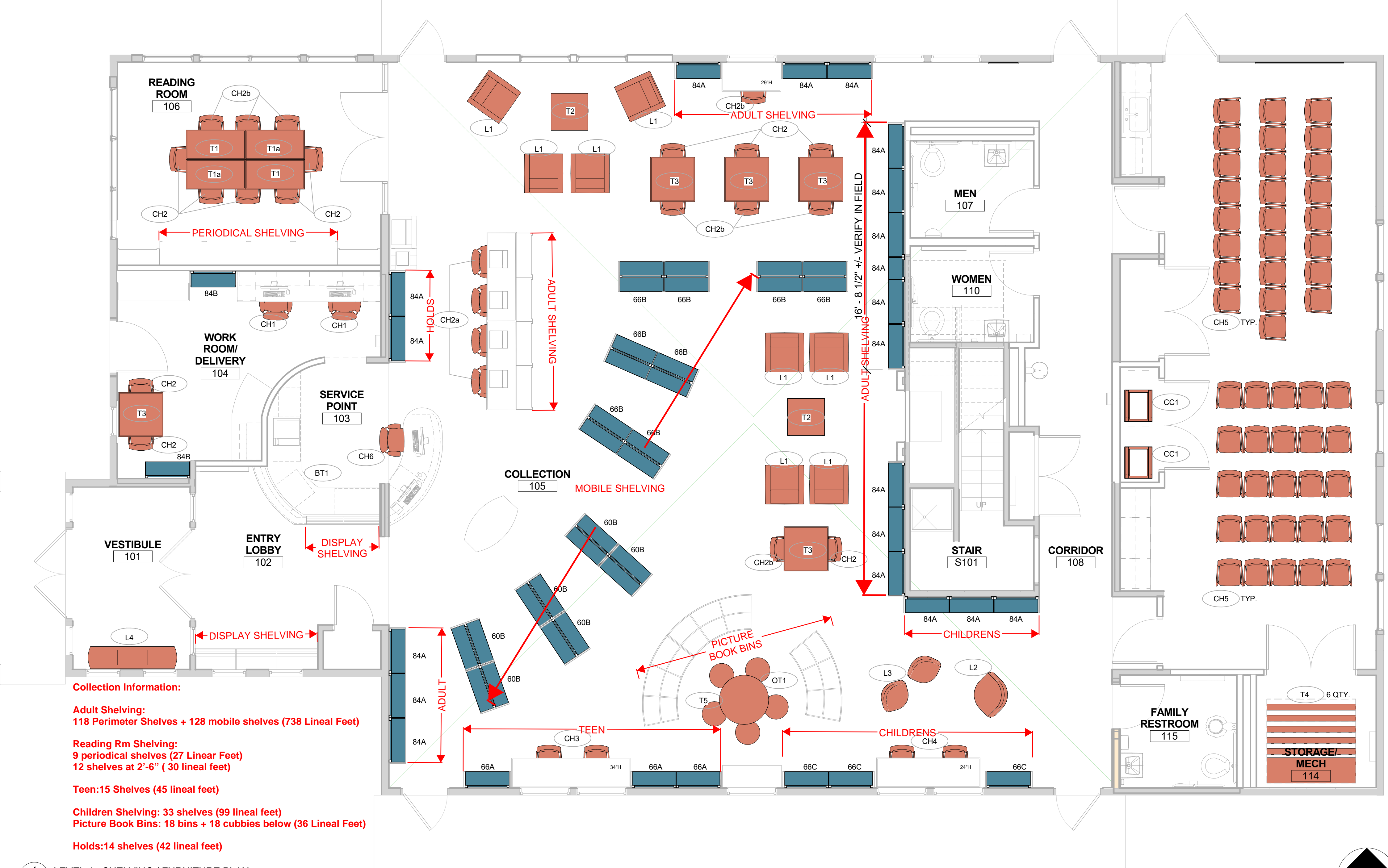
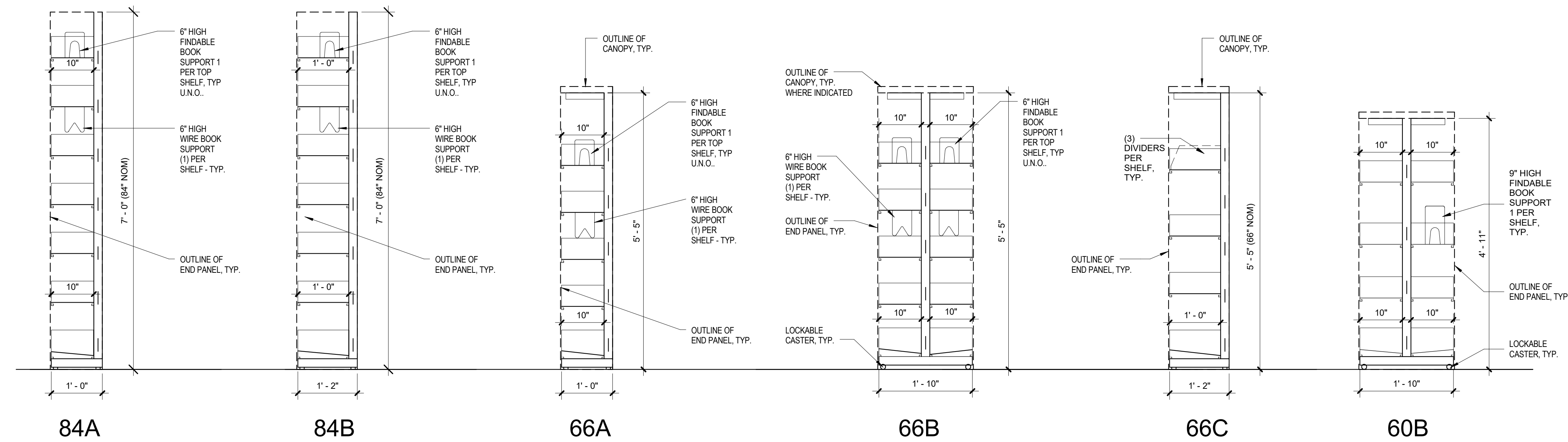


**METAL SHELVING LIST**

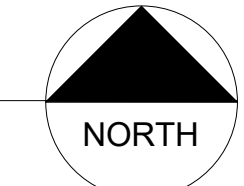
NO.	DESCRIPTION	COLLECTION
84A	SINGLE FACE SHELVING UNIT 36 INCH WIDE X 84 INCH HIGH (6) 10 INCH ADJUSTABLE SHELVES WITH INTEGRAL BACK (1) 10 INCH SLOPED CLOSED BASE SHELF FINDABLE BOOK SUPPORT TOP SHELF (6" HT) (6) WIRE BOOK SUPPORTS	AV RESERVES NON-FICTION CHILDREN
84B	SINGLE FACE SHELVING UNIT 36 INCH WIDE X 84 INCH HIGH (6) 12 INCH ADJUSTABLE SHELVES WITH INTEGRAL BACK (1) 12 INCH SLOPED CLOSED BASE SHELF FINDABLE BOOK SUPPORT TOP SHELF (6" HT) (6) WIRE BOOK SUPPORTS	SORTING
66A	SINGLE FACE SHELVING UNIT 36 INCH WIDE X 66 INCH HIGH (4) 10 INCH ADJUSTABLE SHELVES WITH INTEGRAL BACK (1) 10 INCH SLOPED CLOSED BASE SHELF (1) FINDABLE BOOK SUPPORT (6" HT) (4) WIRE BOOK SUPPORTS	TEEN
66B	DOUBLE FACE SHELVING UNIT - MOBILE 36 INCH WIDE X 66 INCH HIGH (8) 10 INCH ADJUSTABLE SHELVES WITH INTEGRAL BACK (2) 10 INCH SLOPED CLOSED BASE SHELF (8) WIRE BOOK SUPPORTS (1) FINDABLE BOOK SUPPORT (6" HT) (4) LOCKABLE CASTERS PER UNIT	FICTION
66C	SINGLE FACE SHELVING UNIT 36 INCH WIDE X 66 INCH HIGH (3) 12 INCH ADJUSTABLE DIVIDER SHELVES (1) 12 INCH FLAT CLOSED BASE SHELF (3) DIVIDERS PER SHELF	CHILDREN
60B	DOUBLE FACE SHELVING UNIT - MOBILE 36 INCH WIDE X 60 INCH HIGH (6) 10 INCH ADJUSTABLE SHELVES WITH INTEGRAL BACK (2) 10 INCH SLOPED CLOSED BASE SHELF FINDABLE BOOK SUPPORT EACH SHELF (6" HT) (4) LOCKABLE CASTERS PER UNIT	NEW MATERIALS FICTION AV

**FURNITURE LIST**

NO.	DESCRIPTION	NO.	DESCRIPTION
(CH1)	STAFF TASK CHAIR	(L2)	LOUNGE CHAIR & HALF
(CH2)	STUDY CHAIR, ARMLESS	(L3)	LOUNGE CHAIR, CHILD
(CH2a)	COMPUTER CHAIR	(L4)	BENCH
(CH2b)	STUDY CHAIR, ARMS	(OT1)	CHILDREN'S OTTOMAN
(CH3)	TEEN STOOL	(T1)	STUDY TABLE, RECTANGULAR W/ PWWR
(CH4)	CHILDREN'S COMPUTER CHAIR	(T1a)	STUDY TABLE, RECTANGULAR
(CH5)	STACK CHAIR	(T2)	COFFEE TABLE
(CH6)	STAFF TASK STOOL	(T3)	STUDY TABLE, 2 PERSON
(CC1)	CHAIR CART	(T4)	FLIP/NEST TABLE
(L1)	LOUNGE CHAIR, ARMS	(T5)	CHILDREN'S TABLE
		(BT1)	BOOK TRUCK



**Collection Information:**  
 Adult Shelving:  
 118 Perimeter Shelves + 128 mobile shelves (738 Lineal Feet)  
 Reading Rm Shelving:  
 9 periodical shelves (27 Lineal Feet)  
 12 shelves at 2'-6" ( 30 lineal feet)  
 Teen: 15 Shelves (45 lineal feet)  
 Children Shelving: 33 shelves (99 lineal feet)  
 Picture Book Bins: 18 bins + 18 cubbies below (36 Lineal Feet)  
 Holds: 14 shelves (42 lineal feet)



A RENOVATION/ADDITION BUILDING FOR  
 IDA RUPP PUBLIC LIBRARY  
**MARBLEHEAD PENINSULA BRANCH**  
 710 West Main Street  
 Marblehead, Ohio

DATE:  
 SEPTEMBER 14, 2016  
 PROJECT NO:  
 15011  
 SCALE:  
 As indicated

**SHELVING /  
 FURNITURE  
 PLAN**

**A10.0**

216.241.1100  
 1382 West Ninth Street  
 Suite 300  
 Cleveland, Ohio 44113  
 www.HBMarchitects.com  
**HBM**  
 © Copyright by Holzheimer Bolek Meenan Architects 2014