

# **MOBILE CRANE HIRE**

*Specialist in tight access*

**Introducing the newest addition to the fleet**

## **LIEBHERR 60t**

**The only 60t of its kind  
in Victoria,**

**This significantly **SMALLER**  
and more **COMPACT** design  
features **HIGH LOAD** capacity  
and long **BOOM REACH (50m).****

**Able to handle a broad  
range of driving conditions,**

**it has been fitted with **VARIO BASE** which is the latest in chassis  
**SAFETY** technology. Combined with compact dimensions ensures  
has all the features of its counterparts and more.**

**Some more features include:**

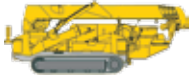
- No VicRoads Permits required**
- Most powerful 3 axel model**
- Highest safety factor**



# dv CRANES FOR HIRE



2.82t Crawler Crane - 8.2 m Reach - Compact crane that will travel through standard door width  
Dimensions: 750mm W x 2.715 L x 1.44 H



3t Crawler Crane - 11m Reach - Tight access - into backyards, factories and laneways  
Dimensions: 1.3m W x 4.3m L x 1.85m H



4t Crawler Crane - 16m Reach - Tight access as above with more reach, electric option for indoor use  
Dimensions: 1.4m W x 5m L x 1.99m H



We have six 7t slew cranes - 19m Reach - Tight access - timber , steel, pre fab walls, trusses spas, tanks and more  
Dimensions: 2.2m W x 7m L x 3.4m H



16t Bubble Slew - 25m Reach - Tight access - Heavier lifting at further distances  
Dimensions: 2.4m W x 8.5m L x 3.3m H



We have two 20t Frannas - 15m & 17m Reach - Lift & Drive  
Carrying goods under powerlines, into laneways & factories  
Dimensions: 2.5m W x 10m L x 3.1m H



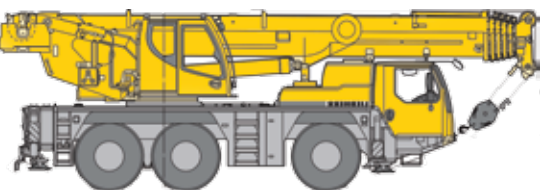
3t Crane truck - 5.4m Reach - 9t Load Capacity on tray, Single axel on airbags  
2.5m W x 5m Tray



5t Crane Truck - 12.2 m Reach - 13t Load Capacity on tray, Airbag suspension  
container pins (20ft), Dual Steer - 2.5m W x 7m Tray



45t Liebherr - 39m Reach - Can be lowered to 3.16m Telescopic cabin for birdseye  
view, no counterweight truck required.  
Can crab into tight sites - 2.7m W x 10.41m L x 3.88m H



60t Liebherr - 48m Reach - Allows higher lift capacities & larger working range.  
2.7m W x 11.2m L x 3.8m H

Access equipment available : Material Cage, Brick Case, Glass Lifter, Palette lifter, Man cage , Window lifter

Please visit [www.dvcranes.com.au](http://www.dvcranes.com.au) for load charts and additional information