

PARTNERS

- European Commission: Directorate General Justice and Consumers
- Università Degli Studi di Palermo
- Universidad de Jaén
- Fondazione ISMU: Iniziative e Studi Sulla Multietnicità
- ASEIS: Asociación por el Empleo y la Integración Social
- Agencia Sanitaria Alto Guadalquivir
- Cooperativa Sociale Badia Grande
- Samusocial International
- Oxfam Italia
- Telefono Donna

WEBSITE

<http://www.unipa.it/dipartimenti/cultureesocieta/progetto-internazionale-provide/>



Universidad de Jaén



UNIVERSITÀ
DEGLI STUDI
DI PALERMO



Asociación por el Empleo y la Integración Social



INIZIATIVE E STUDI
SULLA MULTINETICITÀ



Cooperativa Sociale Badia Grande



Telefono Donna



Comune di Trapani



OXFAM
Italia

intercultura



Comune di
Valderice

samusocial
International



JUNTA DE ANDALUCÍA

Agencia Sanitaria Alto Guadalquivir
CONSEJERÍA DE SALUD



Comune di
Milano

PROXIMITY ON VIOLENCE: DEFENCE & EQUITY

PROVIDE

REC-VAW-AG-2016/REC-VAW-AG-2016-01
(Justice Programme)



EUROPEAN COMMISSION
Directorate General Justice and Consumers

WHY PROVIDE?

Action grants to promote the access to justice and support of victims of gender-based violence and the treatment of perpetrators.

Aim of the project is to contrast some forms of violence - "gender oriented" and some other "of proximity violence".

This action will be focus on: refugee/asylum seeker, minorities, health, hotspot, innovative protection, information, cooperation, best practices.

Italy, Spain and France.

OBJECTIVES

- Recognize any form of gender and proximity based violence
- Create a national and international network
- Allow multidisciplinary and multi-agency management
- Define an integrated protocol supported by operational guidelines
- Test the validity of the elaborated protocol

ACTIVITIES

WS0 Management and coordination of the project

WS1 Research of common good and bad practices

- Identification of performance indicators
- Analysis specific practices and management
- Regional and European reports

WS2 Development and test of the Provide protocol

- Elaboration of the pilot version of protocol
- Promotion of training programmes and selection of participants
- Test and monitoring

WS3 Advocacy and replicability of the Provide protocol

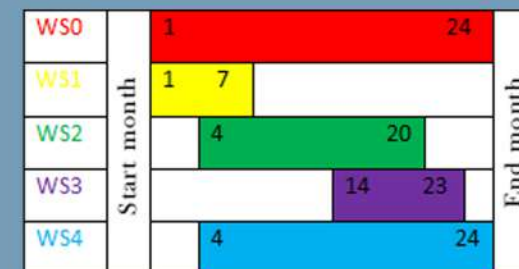
- Fine-tuning of the protocol
- Translation and graphics of the operational guidelines
- Advocacy action and advocacy meeting

WS4 Dissemination and exploitation of results

WHEN PROVIDE?

24 months:

From January 2018 to December 2019



EXPECT RESULTS

Creation of favourable conditions to bring into the open the emergence of the problem of gender and proximity violence.

Development of shared language with regards to the identification, recognition and evaluation process by professionals.

Development of a pilot Protocol - including a set of actions and guidelines - to be tested at local level in four main areas.

Improved knowledge and specific competences of professional operators.

Increased cooperation among European partnership and integration of practices