

# NEMO SX

## MEASUREMENT AND ENERGY MANAGEMENT SYSTEM



**IME**



## MEASUREMENT is the basis of any diagnostic.

BEING ABLE TO MONITOR THE ENERGY CONSUMPTION OF A BUILDING MEANS BEING ABLE **TO SAVE ENERGY**.

This need is still greater if one refers to service-sector or industrial environments where greater efficiency translates into a quite considerable cost saving.

Energy consumptions are particularly high in lighting, heating or air-conditioning systems and in medium-sized or large IT computing infrastructures.

# ENTIRE ENERGY MANAGEMENT IN A UNIQUE OFFER

New **NEMO SX** measurement and energy management system completes the already existing IME measurement offers, by also offering possibilities of:

### CHECK IF THE SYSTEM IS RUNNING PROPERLY

- Measure electrical energy consumed and electrical values such as currents, voltage, powers, frequency, harmonics ....

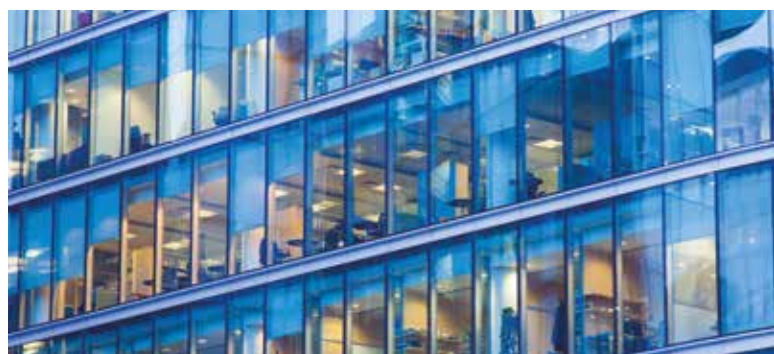


- Display the status of circuit breakers and loads, faults and general system conditions locally or remotely.



### DIRECTLY CONTROL THE SYSTEM

- Take the control devices locally or remotely, via manual or automatic actions.



### MONITOR THE SYSTEM IN THE INSTALLATION OR REMOTELY

- Monitor and control all the processes via computing tools to optimise energy consumption at any time and everywhere:
- Check the status of devices or loads
- Remote control circuits
- Programmed maintenance
- Corrective actions on the system
- Management of signals and alarms
- Historical analysis of consumptions over time



# NEMO SX

## Universal system

### AN INNOVATIVE ENERGY MANAGEMENT SYSTEM

**NEMO SX** system is made up of several DIN modules. Each of them performs a specific function: measurement, command or control of the status of protection or any kind of other devices.



### A PROPOSAL FOR ALL PROFESSIONALS: SYSTEM INTEGRATORS, PANEL BUILDER AND FACILITY MANAGERS

**NEMO SX** system has been designed to satisfy the needs of all professionals in the electrical field. Professionals will find the answer to their needs in terms of energy efficiency, Panel builders & installers will be able to quickly and easily integrate this system in a wide range of application. For Facility managers it will be a suitable solution for their need of maintenance.

### A COMPLETE AND UNIVERSAL SOLUTION

**NEMO SX** is an independent and integrable system which, thanks to its type of automatic connection, simplifies the assembling step and does not require any modification of existing panels. Its mechanical features mean that it can be used with a wide range of protection devices or all type of other devices in all distribution panels and cabinets.

Moreover system monitoring is allowed, using on 1 dedicated PC via USB licence key on on several devices: PC, tablet and smartphone through https page issued by Energy Web Servers.



# ONLY 4 STEPS

## to manage the energy in your installation

**1**  
Select  
the functions



### MEASURE

Measure currents,  
voltages, powers,  
frequency, harmonic  
distortion, energies,  
cosφ...



Single-phase  $\leq 63$  A  
1 Rogowski coil  
Item SXMM63



Three-phase  $\leq 63$  A  
3 Rogowski coils  
Item SXMT63

**2**  
Connect  
the functions

Simple and quick  
connection of all the  
monitoring functions  
with the communicating  
rail and/or the  
communicating cables

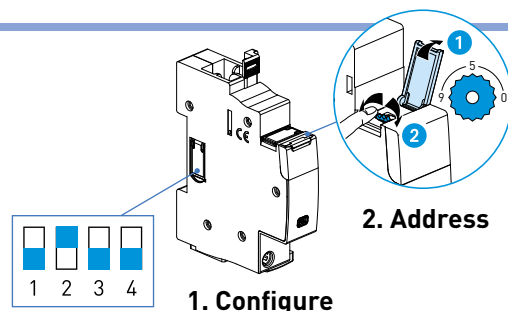


Stabilised 500 mA  
12 Vd.c. power  
supply  
Item SXAA230

**3**  
Configure  
the modules  
and the system

**Possibility 1: manually**  
With no IP or PC connection;  
Thanks to a simple screwdriver.

- 1. Configure:** move the side micro-switches
- 2. Address:** for all modules, turn the rotary wheel to address.
- 3. Program:** with the Mini modular configurator.



**1. Configure**

**2. Address**

**4**  
Supervise  
the system

**Possibility 1: locally**  
all the monitoring is  
directly accessible in  
the electric panel



**Modular mini  
configurator**

- Display consumptions, alarms...
- Control the modules

Item SXV01

**Possibility 1: remote**  
the whole installation  
is managed by PC,  
Smartphone, through  
web pages tablet...



## INFORM



**For external current transformers with a 5A secondary (single phase /three phase)**

Item SXMMT5

**Concentrate the impulses**  
To collect the data of 3 impulse counters



**Impulse concentrator module**

concentrates the measurements made by impulse energy counters (electricity, water, gas...)

Item SXMIMP



**Multifunction status signal module**

Configurable module: display all types of information on the status of the associated load or device no matter its brand

Item SXMC02

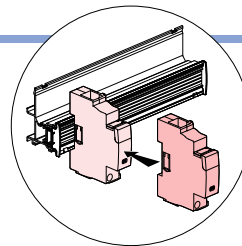
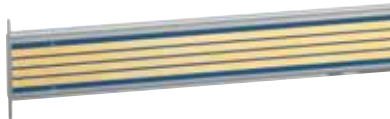
### Communicating rail

It can be positioned on all the types of DIN rail

Item SXAR18 - 18 modules

Item SXAR24 - 24 modules

Item SXAR36 - 36 modules



**Connection with communicating rail**

**Quick and simple connection of NEMO SX modules!**

**Clip the NEMO SX modules on to the communicating rail**

Perfect integration in new or existing modular installations

### 3. Program

**Program the system: with the Mini modular configurator**

- Define the alarms
- Rename the circuits
- Test...



Item SXV01

### Possibility 2: with a PC

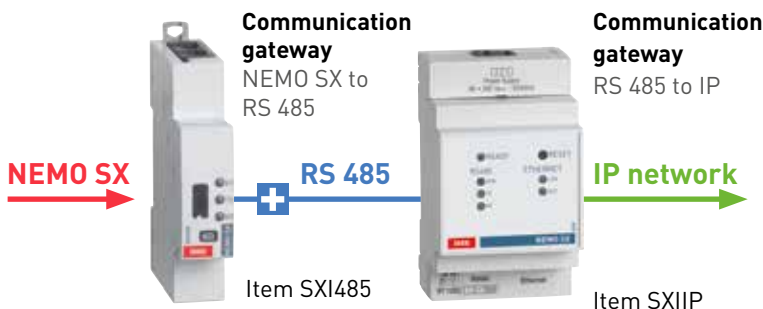
**1. Configure & 2. Address**

**3. Load** the configurations in the system

- Access more technical configurations: timing, tripping thresholds
- Define the alarms
- Rename circuits...



USB  
Connection just during



### On 1 PC only

**With the licence key**

(Energy Manager software) can be displayed on 1 PC only

Item SXS32 or SXS255



or

### On several PC remotely

**With the Web Server**

to display on 1 or more PC, tablet, smartphone

Item SXWS10, SXWS32 o SXWS255



Connection to the IP network via WEB https pages

# All the energy management to manage your installation in a single proposal for all the electric panels



## CONTROL

**Operate on an actuator:**  
associated to loads  
or any kind of  
motorised control  
no matter the brand



### Multifunction control module

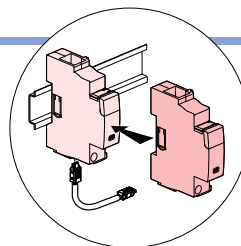
Configurable module:  
1 NO, 1 NC, NO+NC, 2 NO...  
push or switch button  
Item SXM0C1

## Communicating cables

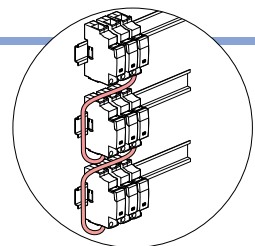
Used as an alternative to the communicating rail or to connect several DIN rows with communicating rail.



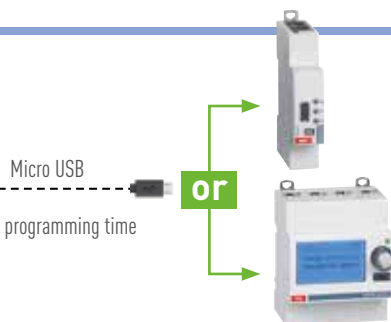
Item SXAC250 - 250 mm  
Item SXAC500 - 500 mm  
Item SXAC1000 - 1000 mm



Connection with communicating rail



Connection of DIN rows



### Communication gateway

NEMO SX to RS 485

Item SXI485

### Modular mini configurator

The screen can directly display data locally and allow to remote control

Item SXV01

## Monitor the whole installation

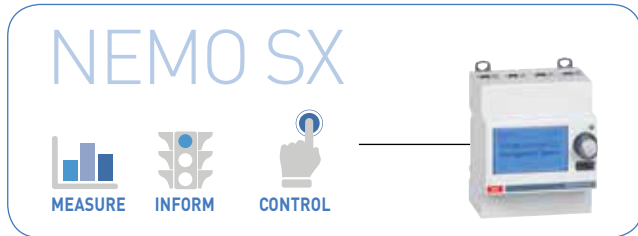
- **Display** the data of the energy saving devices
- **Display** the status of the devices (on, off, tripped...)
- **Display** alarms, threshold values...
- **Control** modular protection and power devices or loads
- **Manage** detailed reports on consumptions (pdf documents)



# NEMO SX

## A proposal suitable for all types of design

### LOCAL MONITORING DIRECTLY FROM THE MINI CONFIGURATION MODULE (LOCAL DISPLAY)



### REMOTE MONITORING VIA PC/SMARTPHONE/TABLET

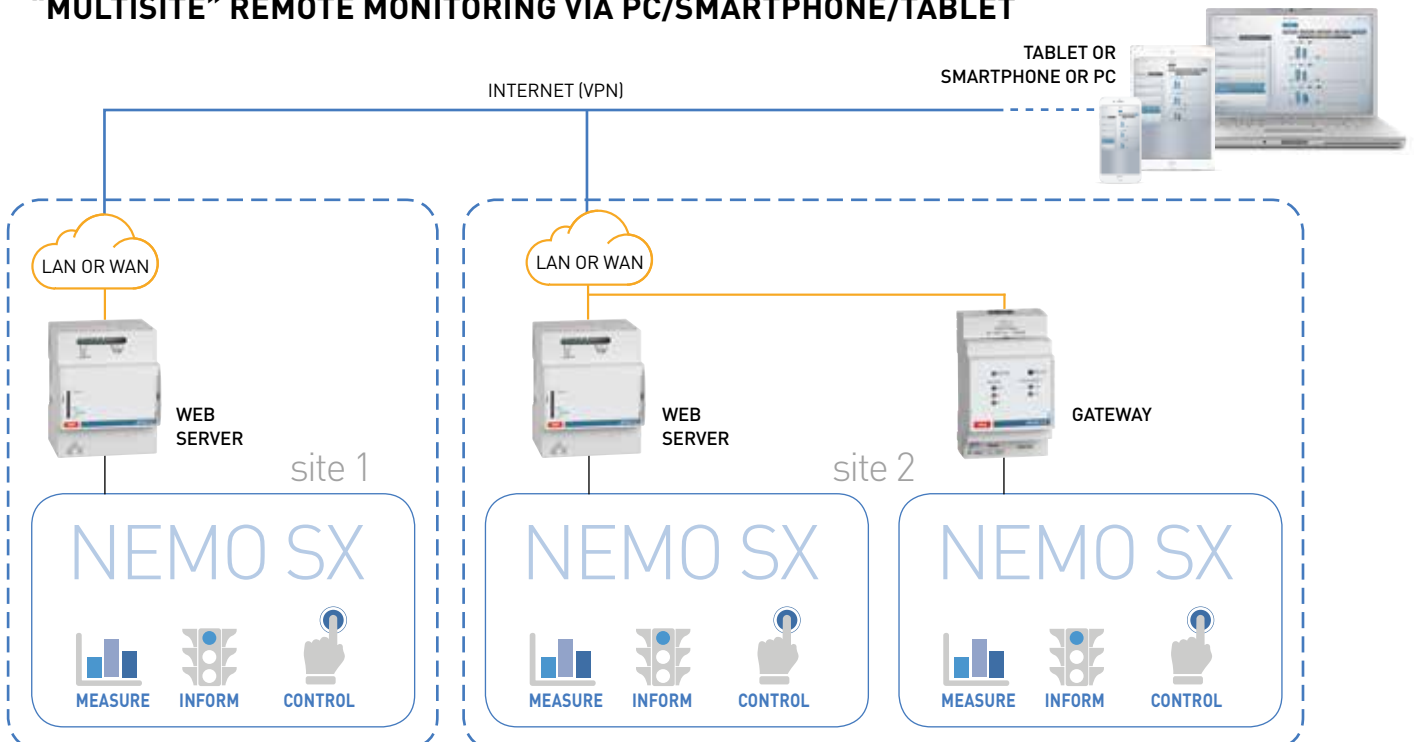
#### a) Via computer



#### b) Via web server



### "MULTISITE" REMOTE MONITORING VIA PC/SMARTPHONE/TABLET





Via Travaglia, 7  
20094 Corsico (MI)  
☎ : +39 02 44 878.1  
Fax +39 02 45 03 448  
[info@imeitaly.com](mailto:info@imeitaly.com)  
[www.imeitaly.com](http://www.imeitaly.com)