

technologies for your future
made in germany

TAMPOPRINT® CL-CLICHÉ-LASER



Software "LaserPlan CL"
on USB stick 2.0 included in scope of supply,
incl. predefined parameters for the
different cliché types
(TAMPOPRINT®).



Highlights

- Do-it-yourself cliché production for
4 cliché types ✓
- Independent cliché production ✓
- Included in scope of supply:
Preconfigured parameters for the
production of TAMPOPRINT® clichés
(the provided parameters can be modi-
fied by the customer) ✓
- Standard cliché fixture for
cliché sizes of the TAMPOPRINT® "her-
metic" systems ✓



These cliché types were
developed by TAMPOPRINT®
and are offered worldwide
exclusively by TAMPOPRINT®

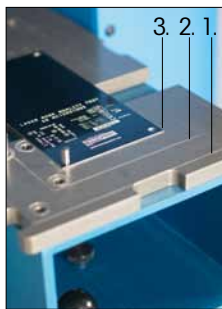
Less ist more

The alternative to the classic cliché production using etching and exposure process.

TAMPOPRINT® offers you a cliché production station at a top price-performance ratio. The production of a laser engraved Aloxid-special cliché with the TAMPOPRINT® "CL-CLICHÉ-LASER" is the most economic laser engraved cliché production on the market. The cliché types Magnet-Aloxid cliché and Magnet-microflex cliché have been developed at TAMPOPRINT® specifically for the laser engraving. The production of these cliché types is based on strict quality standards at TAMPOPRINT®.



Simple and well-arranged handling



Multi cliché plate
(Scope of supply)
1. 300 x 150 mm
2. 215 x 100 mm
3. 140 x 70 mm
4. 105 x 60 mm



Cliché format adapter
(option)
for all cliché sizes, also
third-party products

Technical Data:

TAMPOPRINT® "CL-CLICHÉ-LASER"	Art. No. 41 00 00
Software "LaserPlan CL"	inclusive, on USB stick, for installation on a PC provided by customer (Windows, Multilingual, from version Windows XP)
Import filter	*.dxf vector-oriented file format
Data transfer	USB-B 2.0 interface for PC provided by customer
Parameter preconfigured	for TAMPOPRINT® cliché types (USB stick included in scope of supply)
Marking area	mm 110 x 110
Tampon printing cliché types	Magnet-Aloxid, Magnet-microflex, Aloxid-special and ceramic cliché plates
Cliché sizes TAMPOPRINT® "hermetic" systems	mm 105 x 60, 140 x 70, 215 x 100, 300 x 150 for ink/doctoring cup size Ø 42-140 mm
Multi cliché plate	with pins "H" bore holes
Laser medium	Nd:YAG, 1064 nm
Output power	6W +/-5%
Objective	f-Theta 160 mm
Cooling (ventilator)	air-cooled
Connected voltage +/-10 %	230V/1/N/PE, 50/60 Hz
Connected value	kW 1,0
Housing design	laser class 1, DIN EN 60825.1
Inspection glass / laser safety glass	yes
Working chamber (WxDxH)	mm 340 x 240 x 120 (main working chamber), 170 x 350 x 30 (cliché working chamber)
Dimensions (WidthxDPTHxHeight)	mm 473 x 620 625 / 960*
Weight	approx. kg 68
Extraction connector	yes

* with opened slide door

Options:

- ✓ Cliché format adapter, tool-free assembly on the multi cliché plate, cliché sizes (depth x width)
 - 80 x 100 mm: Art.No. 41 08 98
 - 100 x 100 mm: Art.No. 41 08 99
 - 80 x 80 mm: Art.No. 41 09 20
 - 120 x 120 mm: Art.No. 41 09 21
- ✓ Suction and filter unit according to BIA dust class H: Art.No. 41 08 86
- ✓ Special production of holding plates for formats of third-party products

Dealer:



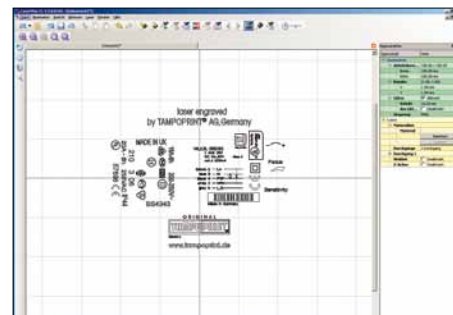
The reproduction of trademarks and brands used in this brochure, even if not explicitly expressed, does not justify the assumption that such names or symbols may be considered as free as defined by the Trademark Act and may therefore freely be used. The rights are the property of the respective owner.

TAMPOPRINT® products are permanently updated to keep pace with the latest technological developments. For this reason, figures and descriptions are non-binding. Our machines are manufactured based on the currently valid European Machinery Directives as well as the European product standards EN 1010 - 1 and EN 1010 - 2.

Subject to alterations! ©Copyright

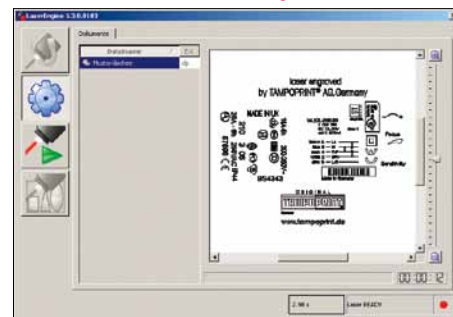
The operation of the TAMPOPRINT® "CL-CLICHÉ-LASER" is extremely simple for the user.

The "CL-CLICHÉ-LASER" is far superior to the laser plotter systems which are available on the market in regard to precision and speed.



Surface "LaserPlan CL" editor with imported *.dxf print data graphics. Here you select your cliché parameters and create data that can be laser engraved.

Click and away



Surface "LaserPlan CL" engine: job center. Here you store and manage your laser jobs and read them out.

Click and away.



TAMPOPRINT® AG
Lingwiesenstraße 1
70825 Kornthal-Münchingen, GERMANY
☎ +49 7150 928-0
Fax: +49 7150 928-400
E-Mail: info@tampoprint.de
"Ventes et Affaires Françaises"
☎ +49 7150 928-144
Fax: +49 7150 928-432
E-Mail: ventes@tampoprint.de
http: www.tampoprint.de

TAMPOPRINT® INTERNATIONAL CORP.
1400 26th Street, Vero Beach, FL 32960, USA
☎ +1 772 778-8896, 800 810-8896
Fax: +1 772 778-8289
E-Mail: sales@tampoprint.com
http: www.tampoprint.com

TAMPOPRINT® IBERIA S.A.U.
c/Caspe 127-135 local B, 08013 Barcelona, SPAIN
☎ +34 93 2327161
Fax: +34 93 2471500
E-Mail: tampoprint@tampoprint.es
http: www.tampoprint.es