

ASCOT Electrical Heating Technical Specs

Product Reference	ASCOT500W	ASCOT1000W	ASCOT1500W	ASCOT1800W
Wattage	500	1000	1500	1800
Number of Elements	3	6	9	11
Dimensions	335 X 575 X 95	575 X 575 X 95	815 X 575 X 95	975 X 575 X 95
Weight (KG)	7	13	19	23
Amperage	2.2	4.3	6.5	7.8

Measured Temperature

.1°C

Setting Temperature

Range:

Comfort/Eco/Timer

5°C to 30°C by 0.5°C

Anti-freeze

5°C to 10°C by 0.5°C

Regulation Characteristics

PI

Electrical Protection

Class II – IP30

Power Supply

230VAC



Multilink Technical Characteristics

Voltage External Power Supply, 5V 500mA

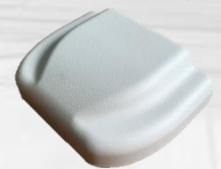
Consumption 300mA

Connection Port RJ45

Indicators LED

Reception 868Mhz RF PCB antenna

Range 200M range outdoor/ 30M indoor-3 walls



Efficiency Guide

For guidance only. Subject to room use, thermal insulation and based on the orientation of the roof Hight, up to 2.4m High. Where 1 panel puts out 166w.

Ascot Heater	Number of Pannels
500W	3
1000W	6
1500W	9
1800W	11

		Recommended	Total
m ²	ft ²	Number of Pannels	Wattage (Kw)
7	75.10	3	0.4998
14	150.19	6	0.9996
21	225.29	9	1.4994
26	275.36	11	1.8326
33	350.45	14	2.3324
40	425.55	17	2.8322
47	500.65	20	3.332
51	550.71	22	3.6652
58	625.81	25	4.165
72	776.00	31	5.1646