



OFFICE/WAREHOUSE FOR SALE

5015 BU Bowman Drive
Buford, GA 30518

CONTACT:
Daren Wayne
770-540-7962
daren@wayne-trading.com

ABOUT THE PROPERTY

- 10,000 +/- SF Office/Warehouse
- 1.04 Acres
- Approximately 50% office and 50% warehouse
- 85% HVAC, 400 AMP 3 phase power
- Zoned M-1 (Light Industrial), City of Buford
- Clear span building, Built in 2001

LOCATION INFORMATION

- Just off I-985 at Exit 8
- Easy access to Lanier Islands Parkway and I-985

PRICE

- \$949,000



Radial Property Group, LLC

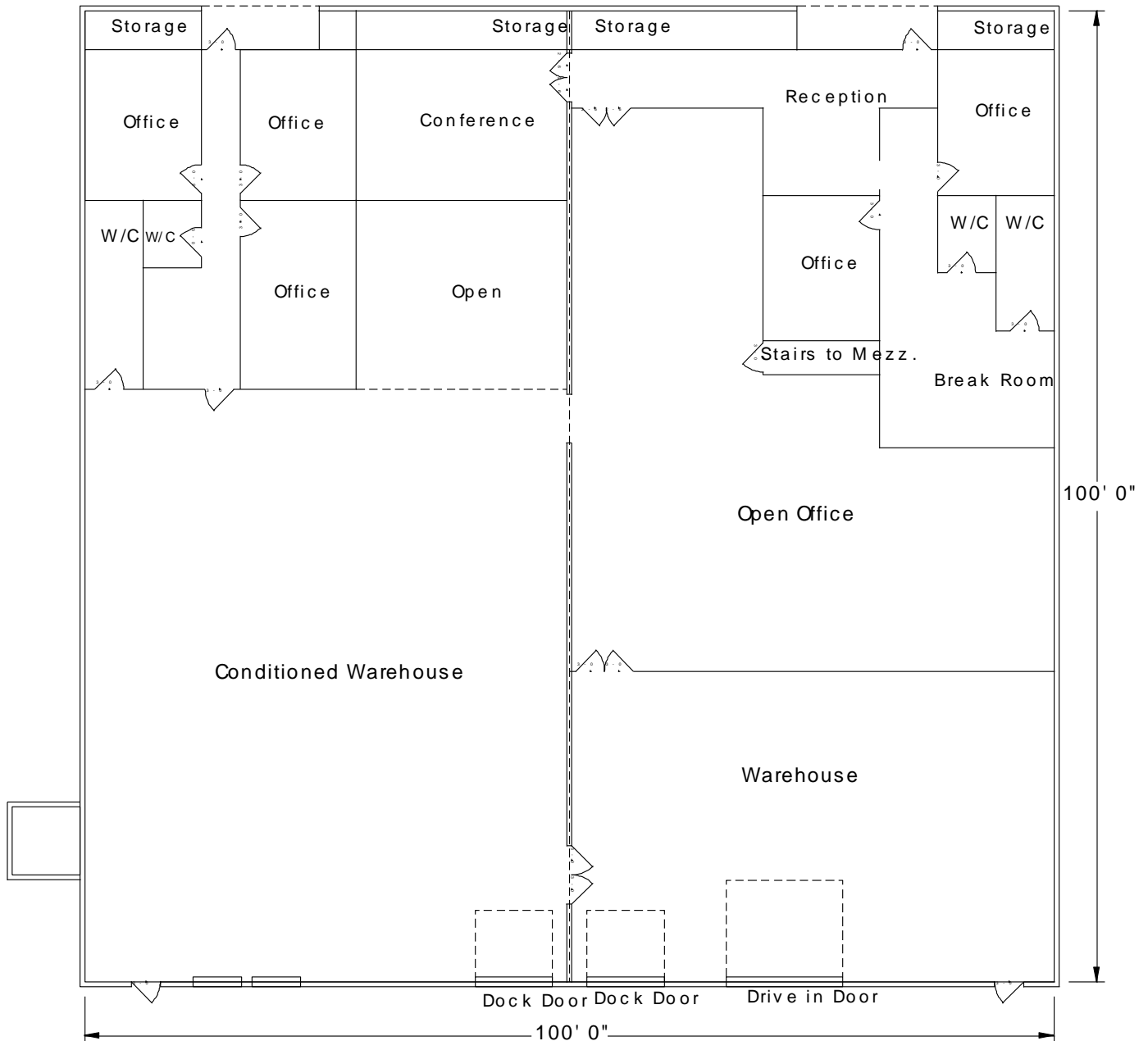
Office: 770-967-4625 www.RPG-CRE.com

5015 BU Bowman Drive
Buford, GA 30518

2018 TAXES: Hall County \$2,154.68

City Of Buford \$2,647.92

FLOOR PLAN



Radial Property Group, LLC

Office: 770-967-4625

www.RPG-CRE.com

5015 BU Bowman Drive
Buford, GA 30518

DETAILS

- 10,000 +/- SF available
- 2 Dock High Doors/1 Drive-in Door
- Multiple offices, Reception area and conference rooms
- Large break room
- Easily converted to 2 separate spaces



PROPERTY LOCATION



Radial Property Group, LLC

Office: 770-967-4625

www.RPG-CRE.com