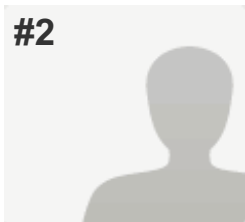


#2



COMPLETE

Collector: Web Link 1 (Web Link)
Started: Thursday, February 26, 2015 2:34:59 AM
Last Modified: Thursday, February 26, 2015 2:49:56 AM
Time Spent: 00:14:56
IP Address: 60.249.254.56

PAGE 1: Administrative Information (Part A)

Q1: 1. Name of Task Force	Task Force on HPH and Environment
Q2: 2. Which of these does the work of your TF focus upon?	Patients, Staff, Community, Environment
Q3: 3. TF Coordinator	
Name	1.2013.1~2014.4: Shu-Ti Chiou 2. 2014.4~2015.1: Chin-Lon Lin
Address	1.2013.1~2014.4: No.36, Tacheng St., Datong Dist., Taipei City 103, Taiwan (R.O.C.) 2. 2014.4~2015.1: No. 2, MinSheng Road, Dalin Township, Chiayi County 622, Taiwan (R.O.C)
Email	1.2013.1~2014.4: stchiou@hpa.gov.tw 2. 2014.4~2015.1: cllinmd@tzuchi.com.tw
Phone	1.2013.1~2014.4: +886-2-2522-8888 # 501 2. 2014.4~2015.1: +886-5-2648000 # 5891
Network Website	http://www.hphnet.org/index.php?option=com_content&view=article&id=143:tf-on-hph-a-environment&catid=20

Q4: 4. Coordinating Institution

Name	1.2013.1~2014.4: Health Promotion Administration, Ministry of Health and Welfare 2. 2014.4~2015.1: Tzu Chi Foundation, Medical Mission
Address	1.2013.1~2014.4: No.36, Tacheng St., Datong Dist., Taipei City 103, Taiwan (R.O.C.) 2. 2014.4~2015.1: No. 2, MinSheng Road, Dalin Township, Chiayi County 622, Taiwan (R.O.C)
Email	1.2013.1~2014.4: msc@hpa.gov.tw 2. 2014.4~2015.1: environment.tf@gmail.com
Phone	1.2013.1~2014.4: +886-2-2522-8888 # 752 2. 2014.4~2015.1: +886-5-2648000 # 5891
Institution Website	1.2013.1~2014.4: http://www.hpa.gov.tw/ 2. 2014.4~2015.1: http://dalin.tzuchi.com.tw/

Q5: 5. Date of Establishment and Expiration

Date of Establishment 04/23/2010,
Expiration of TF Agreement 04/23/2018

Q6: 6. Period covered by this Progress Report

From 01/15/2013,
To 01/15/2015

Q7: 7. Number of your TF's members at the time of reporting

Hospitals	175
Health Services	1
Combined Hospital / Health Services	0
Affiliated members	3
Other entities	0

Q8: 8. Date of checking online list of all my TF members on hphnet.org

Checkup date 12/30/2014

Q9: 9. The list of my members at hphnet.org is Up to date

Q10: 10. Has your TF delivered, or is it planning to deliver, material for the online HPH Library? Yes (please provide details in APPENDIX)

Q11: 11. Has your TF described relation to mission, purpose and objectives of the International HPH Network and expected impact? Yes (please provide details in APPENDIX)

Q12: 12. Has your TF submitted a detailed TF description to the International HPH Secretariat? (including action plan, member list, time schedule, deliverables list and plan for evaluation)	No
Q13: 13. Has your TF recruited and supported TF members to become members of the International HPH Network?	Yes (please provide details in APPENDIX)
Q14: 14. Task Force growth	
Number of new members	25
Number of ceased members	0
Q15: 15. Does your TF have partnerships or working relations with other organizations, institutions or similar? (such as political entities, scientific organizations, NGOs, public institutions, private companies etc)	Yes (please provide details in APPENDIX)

PAGE 2: Exchange of Knowledge and Experience (Part B)

Q16: 16. Organizational structure and way of working	
Describe the organization of your TF e.g. coordinating institution, scientific committee, steering group etc. (If available, please provide an organizational chart in APPENDIX)	Advisory Group and General Members
Q17: 17. Outcomes and main achievements in your TF	
Please describe the main outcomes and achievements	2013 1. The 5th TF Meeting The 5th Meeting of TF on HPH and Environment took place on May 23rd, 2013, during the 21th International HPH conference in Gothenburg, Sweden. Aside from the follow-up of the 4th meeting, a consensus was made to upload the HPH and Environment Manual and Self-Assessment Form onto the TF website for hospitals and medical professionals. The attending experts also suggested organizing promotional activities and giving rewards as incentives. Outstanding healthcare organizations will be selected and recognized in the 22nd International HPH Conference, thus enhancing members' diversity and participation. 2. 2013 International Environment-Friendly Hospital Team Work Best Practice Award Health Promotion Administration organized the "2013 International Environment-Friendly Hospital Team Work Best Practice Award",

encouraging hospitals and healthcare services to actively address impacts of climate change and to recognize best practice examples of green and environment-friendly healthcare. The competition was open to foreign and domestic hospitals, and after evaluation by an international team of judges, six hospitals were selected: they were Taiwan's Linkou ChangGung Memorial Hospital, Buddhist Dalin Tzuchi Hospital, China Medical University Hospital, Taipei Medical University Hospital, KuangTien General Hospital, and Singapore's Khoo Teck Puat Hospital.

3. HPH and Environment Symposium in the 21st International HPH Conference

The 2013 HPH and Environment Symposium was co-hosted by Dr. Shu-Ti Chiou, Director-General of Health Promotion Administration, Taiwan, and Mrs. Anja Leetz, Executive Director of HCWH Europe. Five professionals were invited, including Michael Grimburg from Austria who talked about the safety issue and risk management mechanism of green purchasing; Annegret Dickhoff from Germany who introduced the energy conservation and carbon reduction policies in the local hospitals; Siv Martini from Sweden who talked about environmental risk of the pharmaceuticals; Dr. Ying-Hsiang Chuo, the Vice-president of Taiwan Adventist Hospital, who introduced the carbon footprint calculation mechanism for food in hospitals, and Dr. Ching-Chih Lai of the Green Energy and Environment Research Laboratories, Industrial Technology Research Institute, who analyzed the law and regulation of Indoor Air Quality and introduced a few clean air technology. In total, there were 50 participants in the symposium.

2014

1. The 6th TF Meeting

The 6th Meeting of TF on HPH and Environment took place on April 25th, 2014, during the 22nd International HPH conference in Barcelona, Spain. Resolutions of the meeting included the following: (1) The TF will invite different countries or regions from each continent (North America, South America, Europe, Australia, and Asia) to participate in the Task Force. HCWH may invite their member hospitals from Brazil, North America and other countries to join the Task Force and share their experiences on how to successfully implement environmental-friendly policies. (2) The

Task Force will build an energy benchmarking system for hospitals in different regions. The benchmarks would be adjusted based on the scale of the hospital, number of wards and number of patients. Defined benchmarks would be used to analyze hospitals' efforts and compare their results.

2. HPH and Environment Symposium in the 22nd International HPH Conference During the 22nd International HPH Conference in Barcelona, Spain, the Task Force organized a HPH and Environment Symposium on April 24th. The session featured speakers such as Mrs. Anja Leetz, the Executive Director of the European Branch of Health Care Without Harm (HCWH), and experts from Australia and Taiwan. Furthermore, Director General Dr. Shu-Ti Chiou presented awards to congratulate winners of the 2013 International Environment-Friendly Hospital Teamwork Best Practice Award. The six winning hospitals were Linkou Chang Gung Memorial Hospital, Taiwan, China Medical University Hospital, Taiwan, Khoo Teck Puat Hospital, Singapore, Dalin Tzu Chi Hospital, Taiwan, and Kuang Tien General Hospital, Taiwan.

3. Director General Dr. Shu-Ti Chiou was the chair of the Task Force on HPH and Environment from April 2010 to April 2014, and during this four-year period has been promoting sustainable operation and green initiatives in the international medical community. On April 23rd 2014, Director General Dr. Shu-Ti Chiou presented the overall achievements of the task force to the General Assembly of the International HPH Network. Dr. Chiou also proposed the extension of the task force and passing over the chair to the Tzu Chi Medicine Mission. The extension was approved by the GA.

4. As of 2014, nine hospitals from Taiwan have joined the Global Green and Healthy Hospital network. The members are National Cheng Kung University Hospital, Buddhist Dalin Tzu Chi General Hospital, Buddhist Tzu Chi General Hospital, Taichung Branch, MOHW Chia-Yi Hospital, Taipei City Hospital Zhongxiao Branch, Chang Gung Memorial Hospital Linkou Branch, China Medical University Hospital, Taipei Medical University Hospital, and Kuang Tien General Hospital. Three of the hospitals (NCKU, China Medical University and Taipei Medical University Hospital) also submitted case examples on energy conservation and were featured on

GGHH's website. 5. Data collection from hospitals using the Self-assessment Form for Environment-Friendly Hospital Initiative The self-assessment form integrating GGHHA action items was completed in 2012, and was delivered to 169 Taiwanese general members of the TF in 2014; 142 replies have been returned (as of November 2014) with a 84% response rate. Initial analysis of the data revealed that hospitals generally performed well in dimensions such as leadership, chemicals, waste, energy, water and building; areas that needed improvement were food and transportation. 5. In order to assist hospital to be green, the Task Force (under support from HPA) completed a counselling service and workshops for the hospitals between 2013 and 2014, and published the achievement of green hospital in Taiwan and a guidebook on Health Promotion and Environment-Friendliness.

Please describe the main facilitators and supportive factors encountered

1. International HPH Network: provide relevant administrative resource and platform for information exchange. 2. HCWH: assist Task Force in organizing annual symposiums and related conferences; contribute to collection of worldwide information on green healthcare; promote resource and experience sharing. 3. HPA (Health Promotion Administration, Ministry of Health and Welfare, Taiwan): main financial contributor; provides best practice examples and experience sharing from Taiwan's hospitals, academic experts and government sectors. 4. Industrial Technology Research Institute (Taiwan): commissioned by HPA to assist in the implementation of the Task Force terms of reference. 5. Buddhist Tzu Chi Medical Foundation (Taiwan) : task force operation and promotion of international green healthcare initiatives

Please describe the main problems encountered

Indicators (or tools) that measure and monitor the effects of climate change are still in development; diverse cultural and national characteristics make it difficult to implement a universal indicator and analyze performance of green healthcare.

What do you think is the limit for more members to join the activities of your TF ?

Lack of resources, leadership commitment, know-how, language proficiency (mainly English), manpower and heavy workloads preclude more hospitals and healthcare institutions in joining the task force and carrying out the green initiatives.

Q18: 18. Evaluation and monitoring

Has any evaluation and monitoring been carried out according to implementation of the WHO Standards, projects etc.? (Note: If yes, please provide information in APPENDIX)	No
Have any additional analysis or surveys been carried out? (Note: If yes, please provide information in APPENDIX)	Yes
Which strategies have been used for evaluation and monitoring?	1. Completed a Self-Assessment Forms for Environment-friendly Hospital Initiative – sent to Taiwanese TF members and tested in 2012 and 2014. 2. Completed an online survey system for TF member hospitals to record and track their energy consumptions and waste generation data from 2007 to 2013.

Q19: Which of the WHO Standards and Sub-Standards relate to the work of your TF? 19. Standard 1: Management Policy

The organization identifies responsibilities for health promotion	Yes
The organization allocates resources for the implementation of health promotion	Yes
The organization ensures the availability of procedures for collection and evaluation of data in order to monitor the quality of health promotion activities	Yes

Q20: 20. Standard 2: Patient Assessment

The organization ensures the availability of procedures for all patients to assess their need for health promotion	No
The assessment of a patient's need for health promotion is done at first contact with the hospital. This is kept under review and adjusted as necessary according to changes in the patient's clinical condition or on request	No
The patient's needs-assessment reflects information provided by others and ensures sensitivity to social and cultural background	No

Q21: 21. Standard 3: Patient Information and Intervention

Based on the health promotion needs assessment, the patient is informed of factors impacting on their health and, in partnership with the patient, a plan for relevant activities for health promotion is agreed Yes

The organization ensures that all patients, staff and visitors have access to general information on factors influencing health Yes

Q22: 22. Standard 4: Promoting a Healthy Workplace

The organization ensures the development and implementation of a healthy and safe workplace Yes

The organization ensures the development and implementation of a comprehensive Human Resources Strategy that includes training and development of health promotion skills of staff Yes

The organization ensures availability of procedures to develop and maintain staff awareness on health issues Yes

Q23: 23. Standard 5: Continuity and cooperation

The organization ensures the health promotion services are coherent with current provisions and regional health policy plans Yes

The organization ensures the availability and implementation of health promotion activities and procedures during out-patient visits and after patient discharge No

Q24: 24. Implementation of international, national, regional or local projects

Are they developed on basis of formal assessment of need?	Yes
Are they developed on basis of international, national or regional policy?	Yes
Implementation is monitored by Hospitals/Health Services?	Yes
Implementation of monitoring is followed up by Hospitals/Health Services?	Yes
Which projects have been given priority?	Which projects have been given priority? 1. International: (1) HPH and Environment Symposiums during the annual International HPH Conferences (2) Collaboration with HCWH on projects such as the Pre-conference on Global Green and Healthy Hospital Agenda (3) Advocacy of TF during international events on climate or sustainable development (4) International Environment-Friendly Hospital Team Work Best Practice Award: For 2013, six winning hospitals were selected. They were Taiwan's Linkou Chang Gung Memorial Hospital, Buddhist Dalin Tzuchi Hospital, China Medical University Hospital, Taipei Medical University Hospital, Kuang Tien General Hospital, and Singapore's Khoo Teck Puat Hospital. 2. Domestic: (1) Workshops on promotion of environment-friendly hospitals (2013-2014) (2) Annual collection and analysis of energy and resource data consumption from 169 Low-Carbon Pledged hospitals in Taiwan (2013-2014). (3) The Self-Assessment Forms for Environment-friendly Hospital Initiative – modified from the Global Green and Healthy Hospital Agenda with items more applicable to the hospital situations in Taiwan. The assessment form was tested in Taiwan both in 2012 and 2014.

Q25: 25. Teaching and training

Does the TF offer or organize any training activities related to HPH?	Yes
Has the TF participated in any training activities related to HPH? (e.g. Summer School, staff exchange program, study tours, national/regional HPH conferences etc.)	Yes
Does the TF issue any guidelines on implementation?	Yes

HPH TF Progress Reports 2014

Q26: TEACHING & TRAINING 26. Has your TF supported and participated in International teaching and training?	Yes (please provide details in APPENDIX)
Q27: 27. Has your TF supported and participated in local teaching and training?	Yes (please provide details in APPENDIX)
Q28: COMMUNICATION & ADVOCACY 28. Has your TF advocated HPH nationally, regionally or internationally?	Yes, at 2 or more events (Note: Please provide information in APPENDIX)
Q29: 29. Has your TF disseminated global strategy to all TF members?	Yes
Q30: 30. Has your TF informed internationally and nationally/regionally of the TF work?	Yes, on 1 occasion (please provide details in APPENDIX)
Q31: 31. How many of the TF's own members have been recruited as new HPH members in the period?	
2013	2
2014	2
Q32: ADVANCEMENT OF CLINICAL HEALTH PROMOTION RESEARCH 32. Has your TF enabled members to participate in multi-centre HPH research projects and informed them thereof?	Yes
Q33: 33. Has your Network contributed to the Clin HP Journal (by submitting news, papers or otherwise) within the period?	Yes (please provide details in APPENDIX)
Q34: 34. Has your TF delivered any entries to the HPH scientific library / database?	No
Q35: 35. Has your TF disseminated HPH research among your members?	Yes (please provide details in APPENDIX)
Q36: OVERALL 36. Has your TF developed a TF Action Plan?	Yes (Please provide information in APPENDIX)
Q37: ADDITIONAL QUESTIONS 37. Does your TF have additional strategy, priorities and focus areas:	
For 2013-2015? (Note: If yes, please provide information in APPENDIX)	Yes
For the next period? (Note: If yes, please provide information in APPENDIX)	Yes
Q38: 38. Have your TF received recognition from public authorities, health systems etc.?	No

HPH TF Progress Reports 2014

Q39: 39. Are key TF documents available in local languages?

Yes

Q40: 40. Does your TF collaborate with WHO?

No

Q41: 41. How do you think that the International HPH Network, the GB and the GA could better meet the needs of the Task Forces?

1. Bring visibility to the environment issues by featuring plenary sessions from experts in related fields during the annual International Conference.
2. Encourage HPH members to submit case studies or publish in HPH scientific journal to give more attention to the missions of the task force.

Q42: 42. How do you think your TF could better contribute to the International HPH Network's fulfilment of its objectives?

Through mutual interaction of carbon reduction related activities, we encourage non-HPH member hospitals to apply membership of the International HPH Network.