



Model: THB200  
Part Numnber: 58001

# Hand Blender Food Mixer Set

With Blender, Whisk and Chopper Bowl

## User Manual

Read this manual thoroughly before using  
and save it for future reference

### **IMPORTANT SAFEGUARDS**

1. READ ALL INSTRUCTIONS BEFORE USING THE HAND BLENDER.
2. To protect against risk of electrical shock, do not put the cord, plug, or main body in water or other liquid. Ensure that the appliance does not get wet (water splashes etc.) and do not use it with wet hands.
3. This appliance should not be used by children and care should be taken when used near children.
4. Unplug the cable when; not in use, before putting on or taking off parts, and before cleaning. You might accidentally start the appliance if the unit is still plugged in and result in serious injury.

5. Avoid contact with all moving parts. Blades are sharp and spin at a high speed which can cause injury.
6. Do not operate any hand blender with; a damaged cord or plug, after the hand blender malfunctions, or is dropped or damaged in any manner. Promptly return the hand blender to the nearest authorized service facility for examination, repair, and electrical or mechanical adjustments. A damaged appliance may cause serious injury, start fires, or cause property damage.
7. The use of an attachment not recommended or sold by the manufacturer may cause fire, electrical shock or injury. Only use items designed for use with this appliance.
8. Do not use outdoors. This unit is designed to only be used indoors.
9. Do not let the cord hang over the edge of a table or counter. The cord can get tangled or cause the appliance to fall.
10. Do not let the cord come into contact with a hot surface, including the stove. The protective insulation will burn and make the appliance inoperable or unsafe.
11. When mixing liquids (especially hot liquids), use a tall container or make small quantities at a time to reduce spillage. Hot liquids can spill and cause burns.
12. Keep hands and utensils out of the container while blending to prevent the possibility of severe injury or damage to the unit. A scraper may be used but only when the unit is not running.
13. Blades are sharp. Handle carefully using the blade's collar. Touching the blades can cause injury.

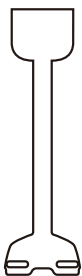
SAVE THESE INSTRUCTIONS

FOR HOUSEHOLD USE ONLY

## What's Included



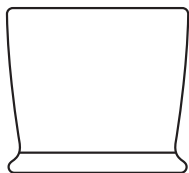
Hand Blender



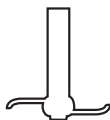
Blender Stick



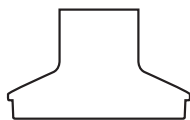
Measuring Cup



Chopper Bowl



S Blade



Chopper Lid

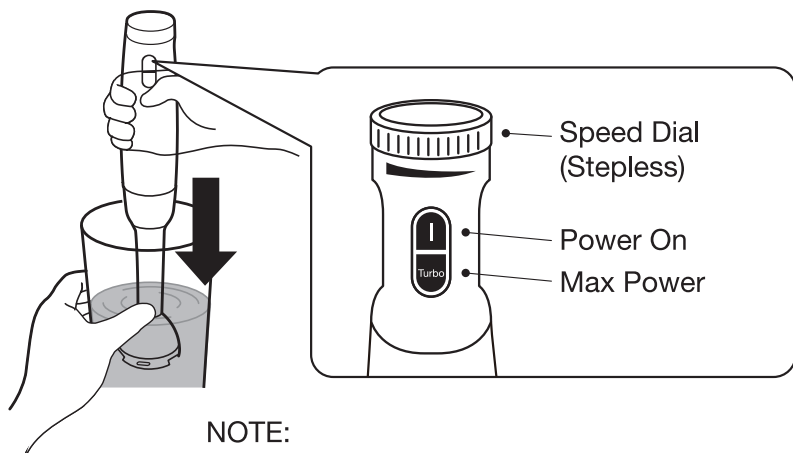
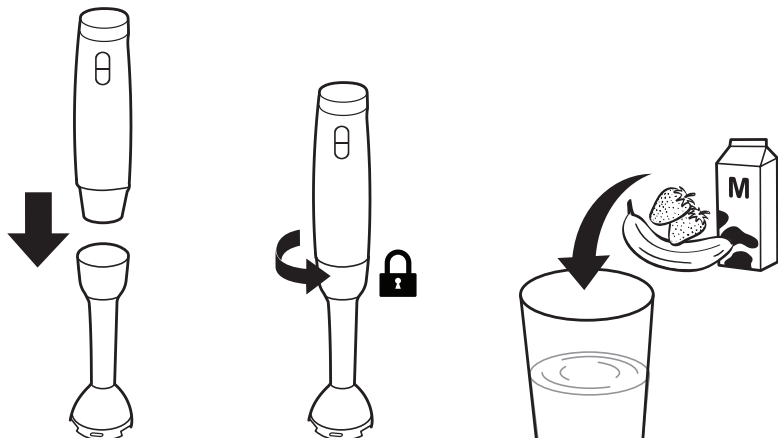


Connecting Base



Whisk

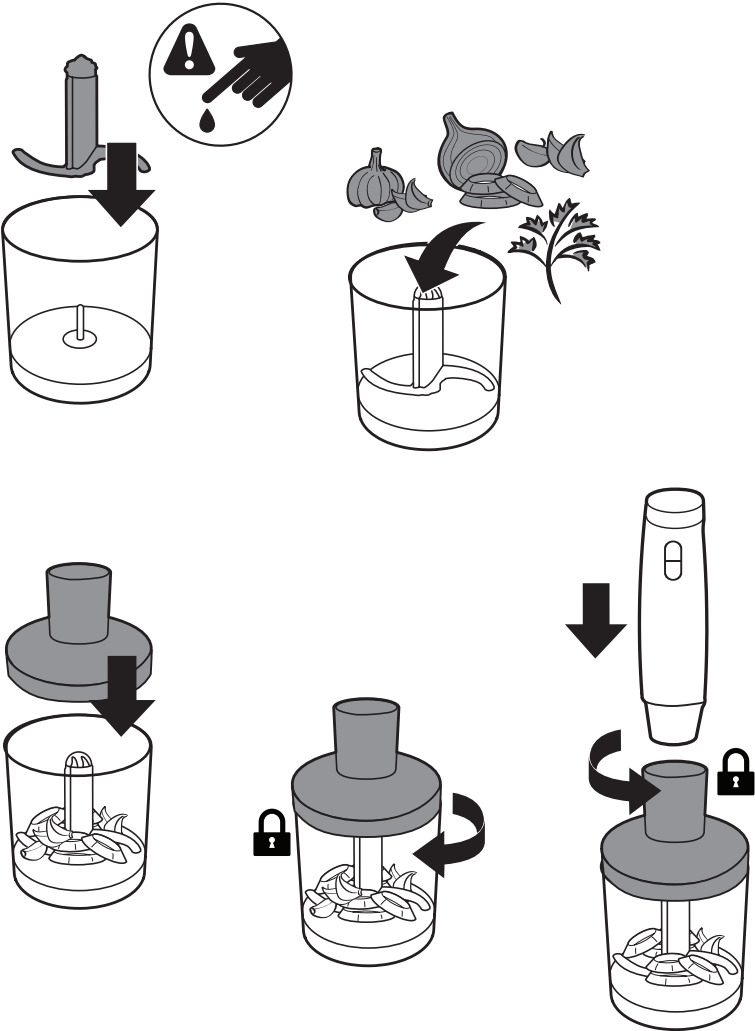
## Using The Hand Blender



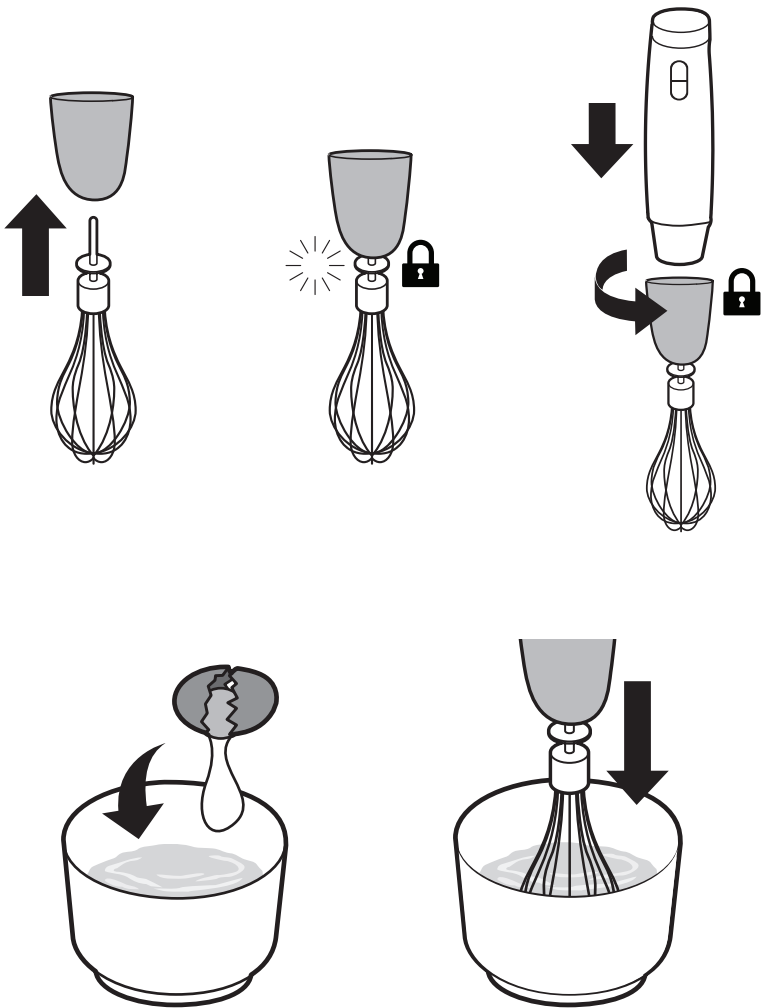
### NOTE:

- Do not blend ice cube with blender.
- For frozen food/fruit, defrost before blending.
- Do not continuously use the blender for more than 1 minute at a time.

# Using The Chopper Bowl



## Using The Whisk



# Specifications

Model:	THB200
Part Number:	58001
Operating Voltage:	AC 120V 60Hz
Power:	200W MAX
Chopping Bowl Capacity:	500mL / 17oz
Measuring Cup Capacity:	700mL / 24oz

## Processing Time Guide (For Chopping Bowl)

Please cut the food into  $\frac{3}{4}$  inch cubes for easier chopping.

Food Type	Max Capacity in the Chopping Bowl	Recommended Working Time
Meat	250 g / 8.8 oz	15-30 seconds
Herbs	50 g / 1.8 oz	10-20 seconds
Nuts	150 g / 5.3 oz	15-30 seconds
Cheese	100 g / 3.5 oz	10-20 seconds
Bread	80 g / 2.8 oz	10-20 seconds
Onions	200 g / 7.1 oz	10-20 seconds
Soft Fruit	200 g / 7.1 oz	10-20 seconds
Ice Cube or Frozen Fruit		Can not be blended

**Do not continuously use the blender for more than 1 minute at a time. For longer jobs, please allow 1 minute of rest in between each use.**

# Cleaning And Maintenance

1. Unplug the appliance from the outlet.
2. Remove the blender accessories.
3. Immerse the accessories in hot water for a few minutes to loosen the food particles.
4. Soak a soft cloth or sponge in a solution of regular dish soap and warm water. Wipe the accessories with this cloth and then rinse it with water.
5. Do not immerse the handheld motor section of the blender. Instead, simply wipe it down with a cloth dipped in white vinegar and allow it to dry. Use a Q-tip to remove build-up around buttons and smaller, hard to clean areas.

## Dishwasher Safe:



Blender Stick



Measuring Cup



Chopper Bowl



S Blade



Chopper Lid



Connecting Base



Whisk

**Do not immerse the motor unit (upper part of the blender) of your blender in water.**

Scan for more  
product information



[www.TenergyLife.com](http://www.TenergyLife.com)