

Demographic and Income Profile

Independence City, MO 2
 Independence City, MO (2935000)
 Geography: Place

Data provided by ESRI

Summary	Census 2010	2017	2022
Population	116,830	120,865	124,191
Households	48,742	50,166	51,400
Families	30,165	30,763	31,393
Average Household Size	2.37	2.39	2.39
Owner Occupied Housing Units	32,014	31,714	32,571
Renter Occupied Housing Units	16,728	18,452	18,829
Median Age	39.4	40.5	41.1
Trends: 2017 - 2022 Annual Rate	Area	State	National
Population	0.54%	0.44%	0.83%
Households	0.49%	0.41%	0.79%
Families	0.41%	0.32%	0.71%
Owner HHs	0.53%	0.40%	0.72%
Median Household Income	2.10%	1.91%	2.12%

Households by Income	2017		2022	
	Number	Percent	Number	Percent
<\$15,000	5,383	10.7%	5,337	10.4%
\$15,000 - \$24,999	6,115	12.2%	5,692	11.1%
\$25,000 - \$34,999	6,083	12.1%	5,405	10.5%
\$35,000 - \$49,999	8,232	16.4%	7,316	14.2%
\$50,000 - \$74,999	10,178	20.3%	9,777	19.0%
\$75,000 - \$99,999	6,222	12.4%	7,798	15.2%
\$100,000 - \$149,999	5,758	11.5%	7,335	14.3%
\$150,000 - \$199,999	1,379	2.7%	1,739	3.4%
\$200,000+	816	1.6%	1,001	1.9%
Median Household Income	\$48,224		\$53,516	
Average Household Income	\$61,368		\$70,098	
Per Capita Income	\$25,691		\$29,229	

Population by Age	Census 2010		2017		2022	
	Number	Percent	Number	Percent	Number	Percent
0 - 4	7,945	6.8%	7,585	6.3%	7,736	6.2%
5 - 9	7,398	6.3%	7,265	6.0%	7,375	5.9%
10 - 14	7,147	6.1%	7,012	5.8%	7,358	5.9%
15 - 19	7,146	6.1%	6,626	5.5%	6,869	5.5%
20 - 24	7,359	6.3%	7,097	5.9%	6,610	5.3%
25 - 34	15,435	13.2%	16,743	13.9%	16,377	13.2%
35 - 44	13,656	11.7%	14,117	11.7%	15,489	12.5%
45 - 54	17,573	15.0%	15,161	12.5%	14,138	11.4%
55 - 64	14,402	12.3%	16,565	13.7%	16,305	13.1%
65 - 74	9,307	8.0%	12,123	10.0%	14,011	11.3%
75 - 84	6,621	5.7%	7,121	5.9%	8,343	6.7%
85+	2,841	2.4%	3,449	2.9%	3,580	2.9%

Race and Ethnicity	Census 2010		2017		2022	
	Number	Percent	Number	Percent	Number	Percent
White Alone	100,112	85.7%	102,094	84.5%	103,389	83.2%
Black Alone	6,498	5.6%	6,645	5.5%	6,834	5.5%
American Indian Alone	736	0.6%	725	0.6%	738	0.6%
Asian Alone	1,143	1.0%	1,424	1.2%	1,666	1.3%
Pacific Islander Alone	815	0.7%	1,049	0.9%	1,244	1.0%
Some Other Race Alone	3,745	3.2%	4,365	3.6%	5,061	4.1%
Two or More Races	3,781	3.2%	4,562	3.8%	5,259	4.2%
Hispanic Origin (Any Race)	8,999	7.7%	10,518	8.7%	12,188	9.8%

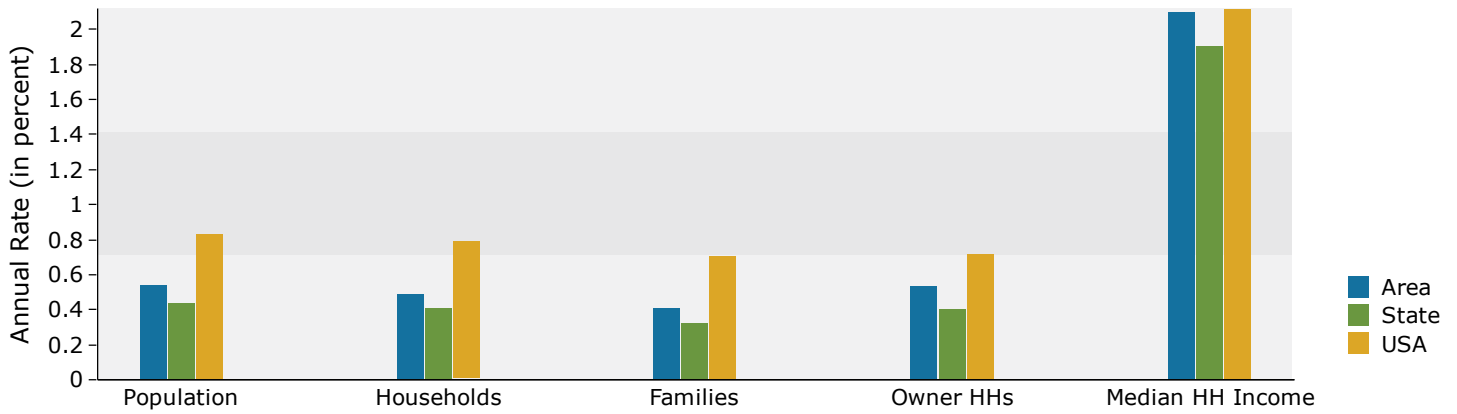
Data Note: Income is expressed in current dollars.

Source: U.S. Census Bureau, Census 2010 Summary File 1. Esri forecasts for 2017 and 2022.

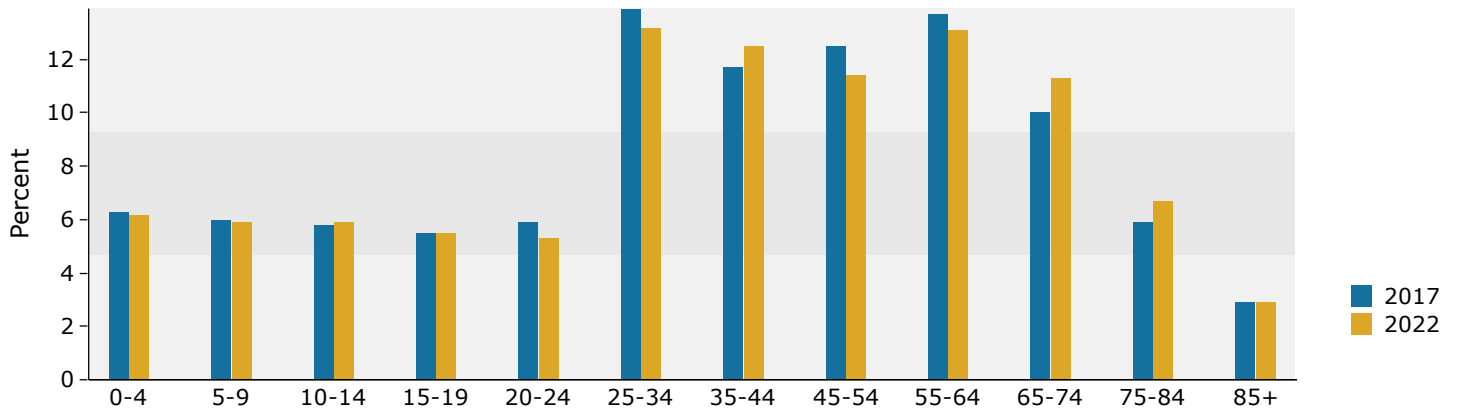
Independence City, MO 2
Independence City, MO (2935000)
Geography: Place

Data provided by ESRI

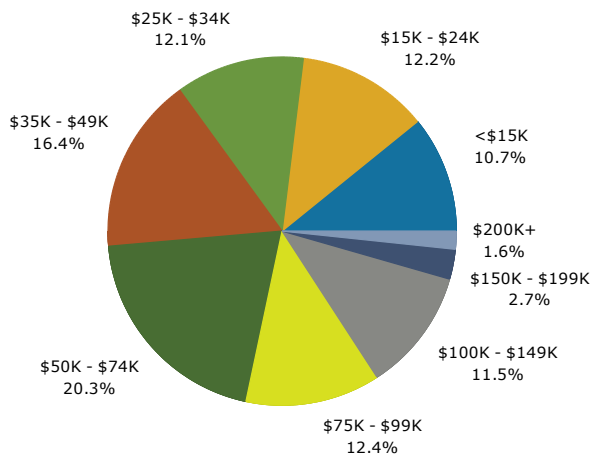
Trends 2017-2022



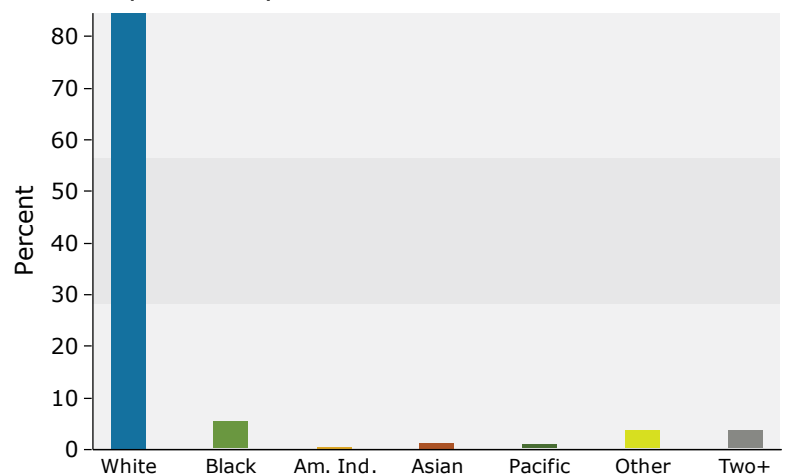
Population by Age



2017 Household Income



2017 Population by Race



2017 Percent Hispanic Origin: 8.7%

Source: U.S. Census Bureau, Census 2010 Summary File 1. Esri forecasts for 2017 and 2022.