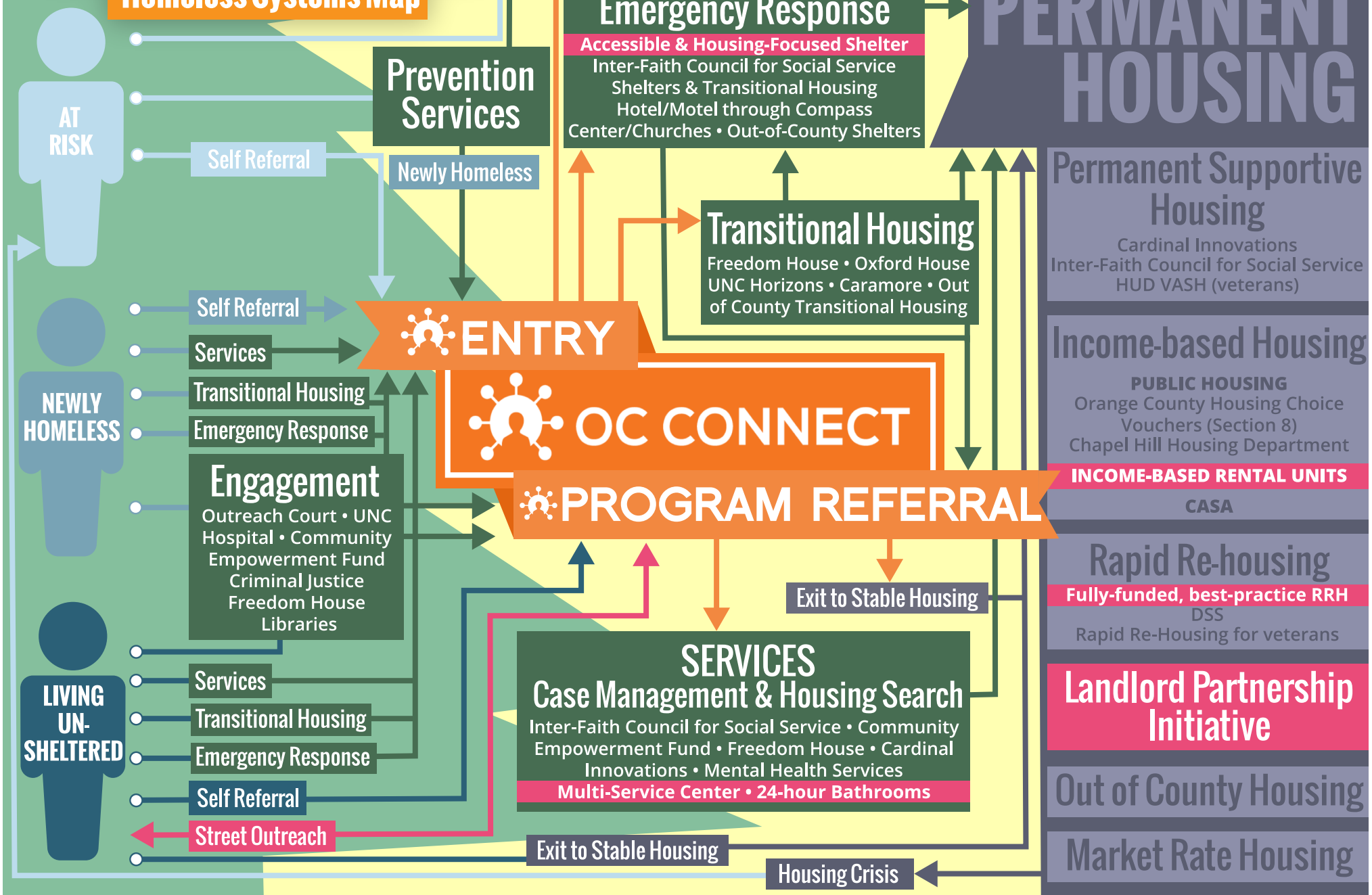


# Homeless Systems Map



# STABLE PERMANENT HOUSING

**Permanent Supportive Housing**  
 Cardinal Innovations  
 Inter-Faith Council for Social Service  
 HUD VASH (veterans)

**Income-based Housing**  
**PUBLIC HOUSING**  
 Orange County Housing Choice Vouchers (Section 8)  
 Chapel Hill Housing Department

**INCOME-BASED RENTAL UNITS**  
 CASA

**Rapid Re-housing**  
**Fully-funded, best-practice RRH**  
 DSS  
 Rapid Re-Housing for veterans

**Landlord Partnership Initiative**

**Out of County Housing**

**Market Rate Housing**



**Prevention Services**

Self Referral

Newly Homeless

Self Referral

Services

Transitional Housing

Emergency Response

**Engagement**

Outreach Court • UNC Hospital • Community Empowerment Fund  
 Criminal Justice  
 Freedom House  
 Libraries

Services

Transitional Housing

Emergency Response

Self Referral

Street Outreach

Maintains Housing

**Diversion**  
 Diversion Funding

**Emergency Response**  
**Accessible & Housing-Focused Shelter**  
 Inter-Faith Council for Social Service  
 Shelters & Transitional Housing  
 Hotel/Motel through Compass  
 Center/Churches • Out-of-County Shelters

**Transitional Housing**  
 Freedom House • Oxford House  
 UNC Horizons • Caramore • Out of County Transitional Housing

**ENTRY**

**OC CONNECT**

**PROGRAM REFERRAL**

Exit to Stable Housing

**SERVICES**  
**Case Management & Housing Search**  
 Inter-Faith Council for Social Service • Community Empowerment Fund • Freedom House • Cardinal Innovations • Mental Health Services  
**Multi-Service Center • 24-hour Bathrooms**

Exit to Stable Housing

Housing Crisis