



## **Ensuring wellbeing of buildings and people in energy efficiency**

February 2015

---

## In brief

- Founded in 2001, privately held corporation
- 50+ customers...in 80+ countries, and growing...
  - Telecom, Carriers, and Service Providers
  - Enterprise customers and governments
  - IP/ICT, Data Centers, manufacturing, processing industry, energy efficiency, M2M, Internet of Things



Smart energy



Wearables



Smart buildings



Connected cars



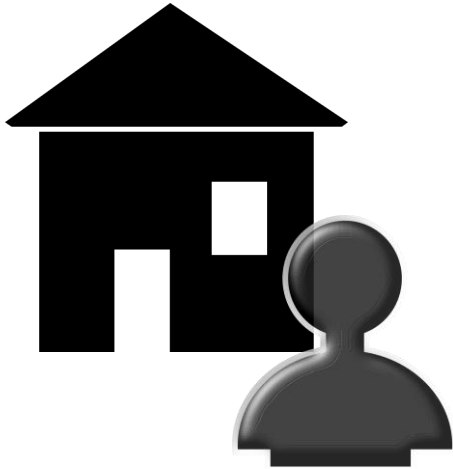
Smart factories



eHealth



Smart agriculture

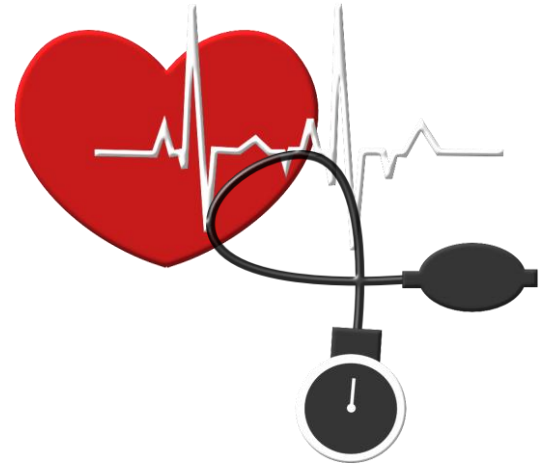


## **Spime'd: Buildings & People**

---

## Problem/challenge

- People = living 'sensors' for indoor conditions problems
- Problems get analyzed only after (some) people get health problems, e.g. respiratory symptoms
- Symptoms can lead to severe lifetime sicknesses like asthma

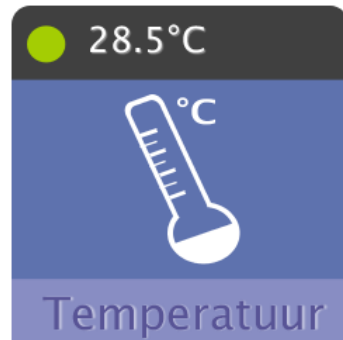
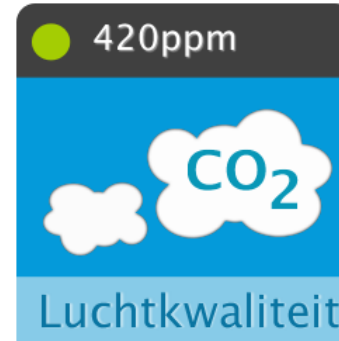


## Solution

**sensors + data + analytics**

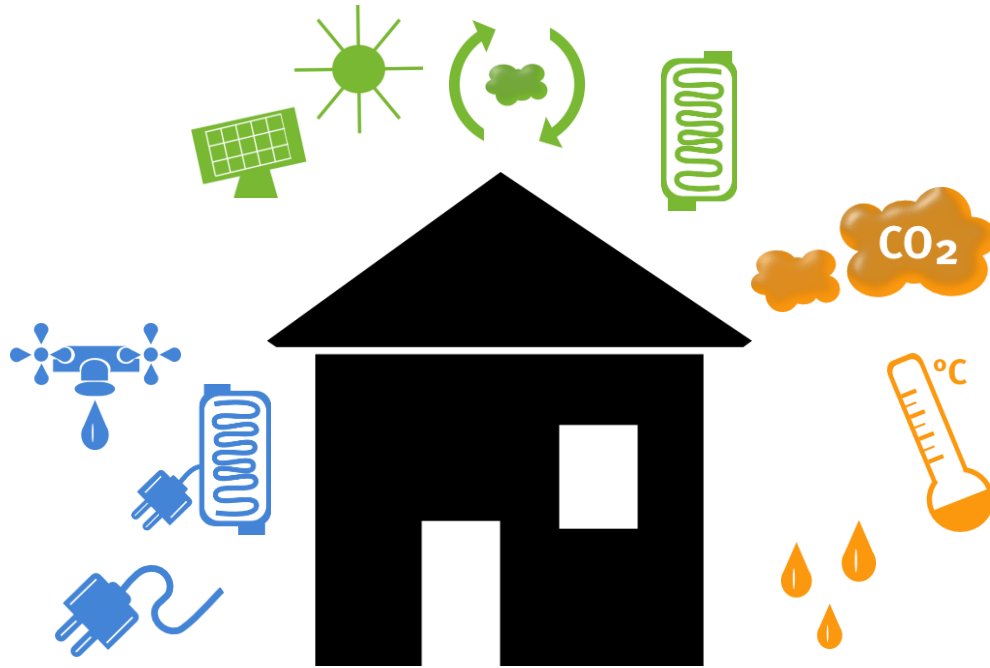
- **covering the entire lifetime of the building  
(design - construction - use)**
- **owner of the building owns the data**

# Spiming VolkerWessels



# Case: VolkerWessels

BaseN #spime Platform measures - analyses – controls – presents:



## CONSUMPTION

Electricity  
Water  
Heating energy

## ENVIRONMENTAL CONDITIONS

Co2  
Temperature (indoor & outdoor)  
Humidity

## PRODUCTION MEASUREMENTS

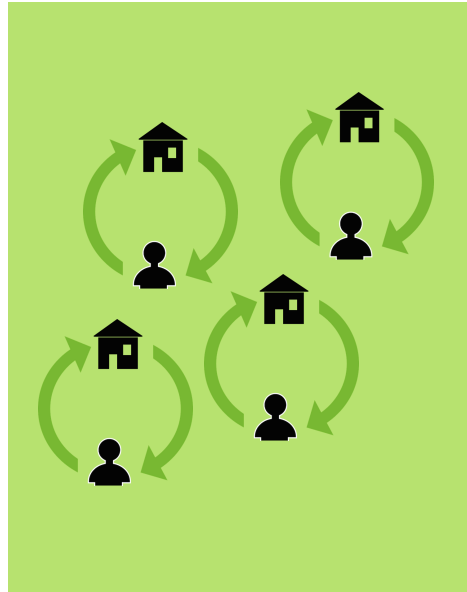
PV cells  
Recuperated heating energy  
from ventilation  
Air to water heat pump

Control of ventilation is based on indoor  
environmental conditions measurements

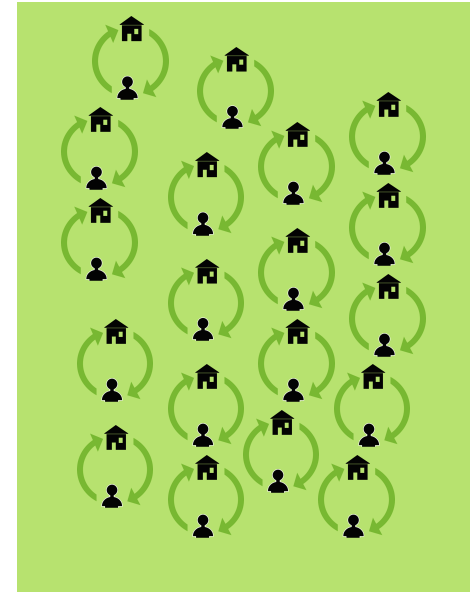
# Interconnected Health



HOME



NEIGHBORHOOD



CITY



# Spime In

---



## **BaseN Corporation**

Salmisaarenaukio 1  
00180 Helsinki, Finland  
Tel +3589 4282 4200

440 North Wolfe Road  
Sunnyvale, CA, 94085, USA  
Tel +1-650-714-2291

**Twitter: @BaseN Corp**

**[www.basen.net](http://www.basen.net)**

---