



CENTRE NUMBER
777029

SALON BROCHURE

KMK

ADVANCED BEAUTY



KMK Advanced Beauty & Training

Marion Kilrane
2 Ard Na Sí
Mohill
County Leitrim
N41 NP97

mobile 083 803 2321
landline (071) 963 2636

info@kmkadvancedbeauty.com
kmkadvancedbeauty.com



Trimeprint Ltd. Armagh



CLINICARE[®]
CUTTING EDGE COSMECEUTICAL FORMULA

 PUREBEAU
Fine permanent make up



PUREBEAU FIBROBLAST Skin Tightening

PUREBEAU
FIBROBLAST

Fibroblast Skin Tightening treatment or method is a completely revolutionary method that offers perfect facial rejuvenation, but it is important to emphasise that **Fibroblast Skin Tightening** is a non-invasive technique in which no concussion or any other surgical instrument is used.

Results last 3 - 5 years

Only one or two treatments are required. In case a second treatment is needed this will be offered at half price.

Brow lift	€340
Eyelift inc. undereye	€340
Jowl lift	€340
Smoker's lines	€340
Full neck lift	€560
Tummy lift	€560
Skin-tag removal	starts at €55; €12 for every following skin-tag
Age spot removal	starts at €55
Acne scarring	consult technician

SEMI-PERMANENT MAKEUP

Ombre Brows	€225
Microblading Eyebrows	€225
Combination Eyebrows	€250

Eyeline Top	€170
Eyeline Bottom	€170
Both together	€280

Full lip colour	€340
-----------------	------

Yearly top-ups
(must be 12 months or less)

Eyebrows	€115
Eyeline	€115
Lips	€230

Prices include the first top-up

HIFU non-surgical facelift

HIFU stands for 'High-intensity focused ultrasound'. This treatment can target various depths of the body's tissue for skin tightening, skin lifting and body contouring. Entirely non-invasive, HIFU works by targeting deep layers in the skin - it boosts new collagen production and collagen regeneration right at the source. It is sometimes called the 'Lunchtime Face Lift' as the treatment is quick, very tolerable and has no downtime.

What is HIFU treatment for face?

HIFU treatment for the face works as a non-invasive facelift. It tightens the skin, irons out wrinkles, shrinks pores, targets the 'V' line formation and jowl lines. HIFU improves overall skin tone, pores, brightness and elasticity.

COMING SOON: HIFU fat burning body

€230

DERMAPEN MESOTHERAPY FACIAL with Collagen Lip Plump

Using the most advanced microneedling pen & Clinicare mesotherapy cocktails & masks, this device slides along the skin, penetrating the upper layers of the skin in order to create numerous tiny needle wounds. This procedure causes the body to respond by forming new collagen and elastin fibers. In response to this stimulus, the skin plumps and thickens, which results in reduction of the appearance of scars, fine lines and wrinkles.

€115 or three treatments for €270

NO-NEEDLE MESOTHERAPY with Cavitation Facial & Body

During an ultrasonic facial, high-level soundwave technology is used to penetrate deep below the surface of the skin, promoting cellular renewal and repair, toning muscles, increasing blood circulation, encouraging lymphatic drainage, combating puffiness and swelling.

It improves skincare product penetration, acting as a delivery mechanism for the active ingredients, pushing product through the dermal layers of the skin without the use of a needle. In turn it will temporarily allow the cell membranes to become permeable allowing the cell to absorb the vital nutrients contained within each active ingredient. This technology allows us to perform a transdermal infusion of products designed and formulated to create a no-needle version of mesotherapy.

Ultrasound may be used on most parts of the body, including the face, neck, arms, breasts, stomach, waist, hips, buttocks and legs.

Facial	€65 or three for €170
Tummy	€65 or three for €170
Bum	€65 or three for €170
Thighs	€65 or three for €170

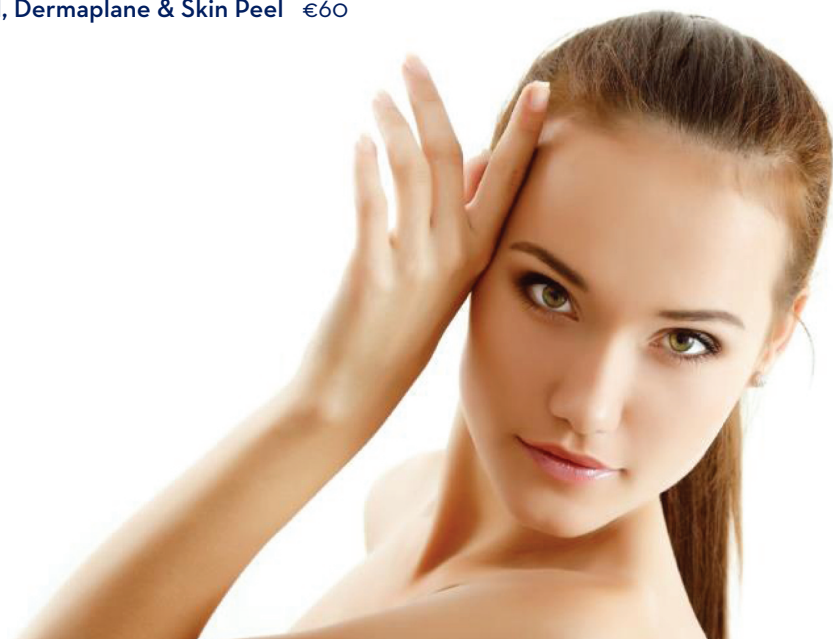
THE PHANTOM LED LIGHT THERAPY FACIAL

The Phantom combination therapy LED Facial Mask is amazing for the skin: it uses combination LED light therapy along with galvanic current treatment. These can be operated together or as two separate treatments.

Phantom facial therapy can be used in conjunction with other treatments such as facials, microdermabrasion, peels and laser.

It treats both face and neck, increases blood circulation and collagen production, combats the signs of ageing, prolongs Botox and fillers and kills bacteria that cause acne. It helps fade acne scarring, skin rejuvenation, increases levels of oxygen and promotes skin healing, repairs sun damaged skin and pigmentation, smooths open pores, tones facial muscles and decreases wrinkles.

LED Facial	€35
LED Facial & Dermaplane	€45
LED Facial, Dermaplane & Skin Peel	€60



CLINICCARE SKIN PEELS

Chemical peels are a form of exfoliation that have a number of benefits, primarily to improve the appearance of dull, ageing skin and lessening fine lines and wrinkles. Chemical peels work because they are highly acidic, dissolving and eradicating dead cells on the skin's surface, and revealing younger cells below.

Using one of the most advanced peels Cliniccare allows us to adjust each peel's strength to your individual's skin type & needs.

Skin Peel Facial	€35
Skin Peel & LED	€45
Skin Peel, LED & Dermaplane	€60

CLINICCARE ADVANCED FACIAL

Using the best cosmeceutical brand you will receive an advanced facial, starting with Dermaplane to remove all vellus hair & dead skin, followed by Instantly Painless Peel to kill any bacteria remaining on your skin, proceeding into a 20 minute specialised facial massage exclusive to KMK Advanced Beauty that is designed to lift & tighten your skin, finally finishing with a mask.

This problem-solving sheet mask contains Hyaluronic Acid to hydrate, Niacinamide to repair the skin's moisture barrier and Aloe Vera to soothe, creating a calmer and more harmonious complexion. Even after removal, the ingredients continue to work, providing long-lasting relief for problematic and reactive skin types.

€70

CLINICCARE DERMAPLANE FACIAL

Dermaplaning is an effective and safe exfoliation procedure. It uses a sterile surgical scalpel to shave the surface of the skin to remove excess dead skin and peach fuzz hairs. The tool is used by brushing along the skin to remove the hair and skin cells. Because it creates deeper product penetration boosting the products effects, we follow the treatment by applying one of our Cliniccare Sheet Masks to suit your individual needs:

Cliniccare EGF Pure Mask

This problem-solving sheet mask contains Hyaluronic Acid to hydrate, Niacinamide to repair the skin's moisture barrier and Aloe Vera to soothe, creating a calmer and more harmonious complexion. Even after removal, the ingredients continue to work, providing long-lasting relief for problematic and reactive skin types.

Cliniccare EGF Glow Mask

This revitalising sheet mask contains a blend of Hyaluronic Acid, Arbutin and Argireline, to effectively hydrate and brighten sun-damaged skin. Added botanical extracts soothe and rebalance dehydrated complexions to help maintain the results for as long as possible.

Cliniccare EGF Refresh/Tight Mask

This innovative sheet mask contains a high concentration of Hyaluronic Acid to hydrate alongside wrinkle-filling and skin-tightening ingredients, such as Argireline and DMAE. Added botanical extracts soothe stressed skin and calm inflammation to leave the skin looking refreshed, revitalised and youthful.

Dermaplane Facial with Cliniccare Mask	€45
Dermaplane, Mask & LED	€55
Dermaplane, Skin Peel & LED Mask	€60

BEAUTY TREATMENTS

HD Brows	€25
Henna Brows	€25
Wax & Tint	€12
Lash Base Lash Lift	€35



ABOUT CLINICARE

Hyaluronic acid is one of the most useful ingredients used in skin care today and world-renowned Swedish cosmeceutical brand Clinicare knows this better than anyone.

Every product in their concise range of skin care contains this ingredient as a fundamental component to help treat a number of skin conditions from acne to ageing.

Unlike traditional forms of Hyaluronic Acid, they have managed to develop a more effective alternative in order to achieve better results in the long term. Usually Hyaluronic Acid molecules are 3000 nanometers wide but the space between the skin cells is only 100 nanometers wide, making it difficult for some forms of Hyaluronic Acid to pass beyond the surface layer on their way to the dermis. This newly formulated version of Hyaluronic Acid has been condensed to a much lower molecular structure of just 5 nanometers wide, without compromising on results, so that it can reach the lower layers of the skin easily.

Not only that, but Clinicare have also created a selection of essences, products previously only found in the Japanese skin care market. These lightweight but powerful facial essences pack a real punch in terms of ingredients and offer an extra step in any routine, between toning and applying serum, helping to tackle anything from uneven pigmentation to dry patches.

Also included in the Clinicare range are a cleanser, an eye cream and a sunscreen alongside a collection of targeted toners and serums to help everyone put together a skin care routine that will give great results every time.

We retail a wide range of Clinicare Products - ask your therapist for more information.



CLINICARE®
CUTTING EDGE COSMECEUTICAL FORMULA