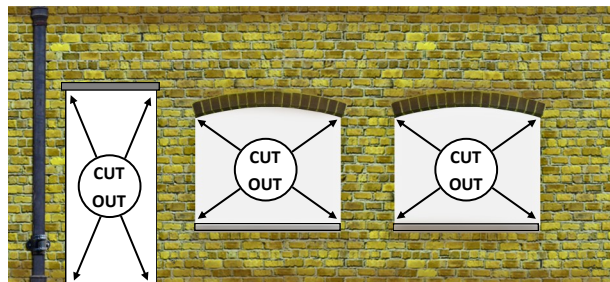




**GLUE THIS  
SHEET TO  
1MM CARD**



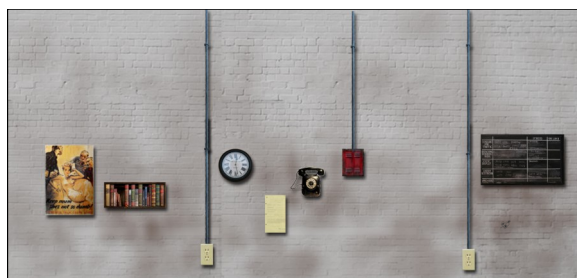
EXTERIOR FRONT WALL



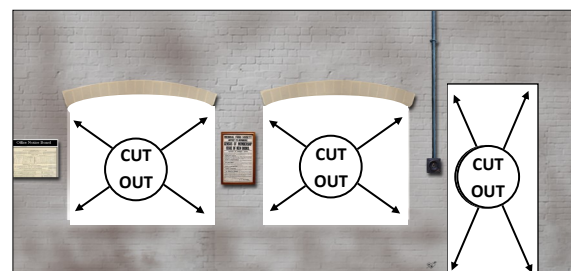
INTERIOR FLOOR



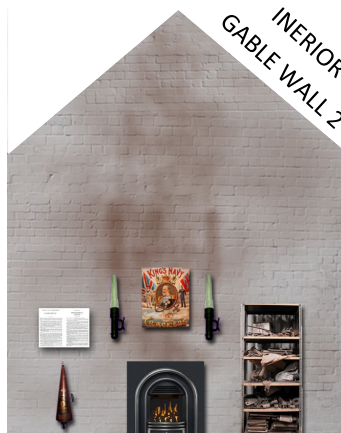
INTERIOR REAR WALL



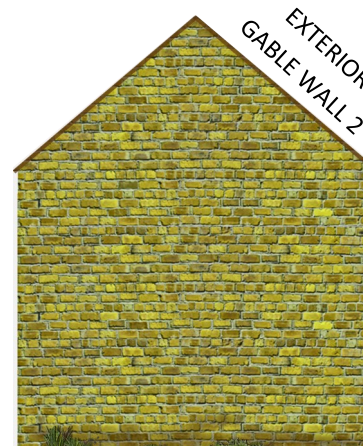
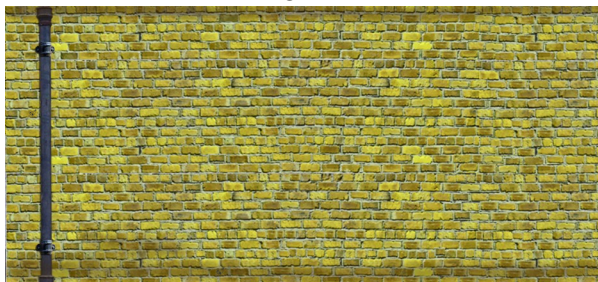
INTERIOR FRONT WALL



ROOF TRUSS



EXTERIOR REAR WALL



DOOR STEP



DOOR LINTEL BASE



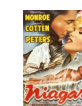
DOOR LINTEL



WINDOW SILL BASES

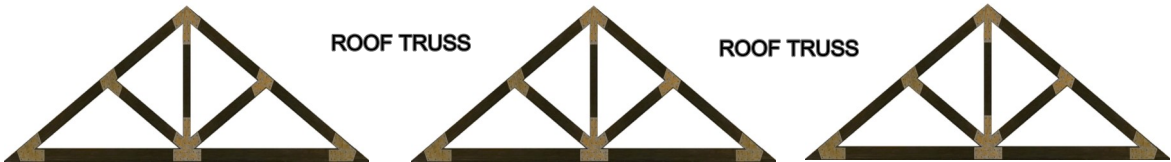


WINDOW SILLS



June 2014. I fully understand your desire to share these incredibly detailed popular 3dk.ca kits with your friends but please don't. 3dk.ca (Owner Calum Faerlin-Cruich) has invested a lot of time and money to bring you the highest quality kits possible. In order for 3dk.ca to continue bringing you high quality kits your continued support is vital. For personal use only. Unauthorized distribution, copying, commercial exploitation, or modification in any way by the purchaser or any third party of this 3dk© publication is strictly prohibited without the owner's prior written permission.

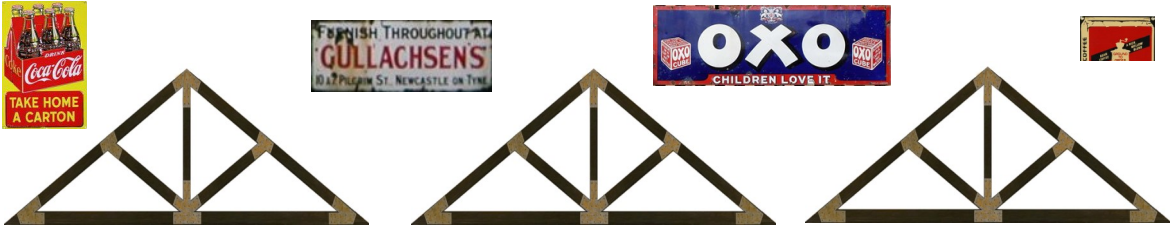
**3DK**  
 OO GAUGE 4MM  
 OO-1H YELLOW  
 BRICK OFFICE  
 3DK© June 2014  
 Sheet 2 of 5



CHIMNEY BASES

GLUE CHIMNEY BRICKWORK HERE

**BASE 2**



CHIMNEY TOP BASES

BASE 1.

BASE 2.

BASE 3.

BASE 4.

BASE 5.

GLUE CHIMNEY BRICKWORK HERE  
**BASE 1**

GLUE CHIMNEY BRICKWORK HERE  
**BASE 6**

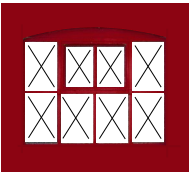
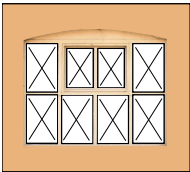
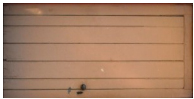
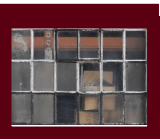
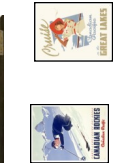
GLUE CHIMNEY BRICKWORK HERE  
**BASE 3**

GLUE CHIMNEY BRICKWORK HERE  
**BASE 8**

GLUE CHIMNEY BRICKWORK HERE  
**BASE 7**

GLUE CHIMNEY BRICKWORK HERE  
**BASE 4**

GLUE CHIMNEY BRICKWORK HERE  
**BASE 5**



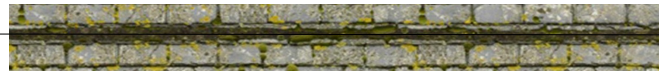
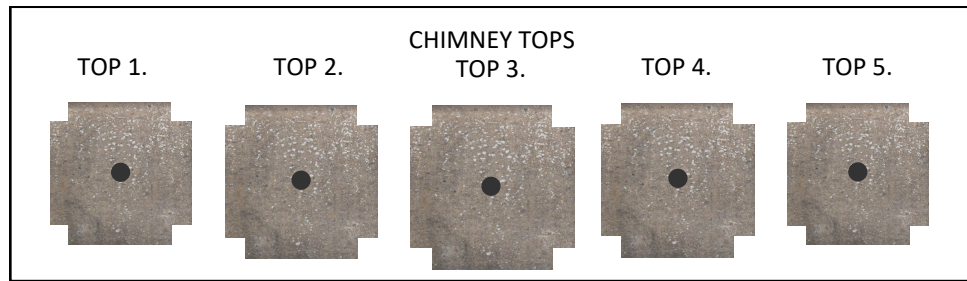
It is not necessary to cut out the middle of the roof truss but it is essential to fit them in place as per the instructions to ensure the buildings structural integrity and to avoid any warping in the roof.

GLUE THIS SHEET TO 1MM CARD

ROOF BASE

Glue the roof top onto the roof base and fold the edges over as shown below and glue

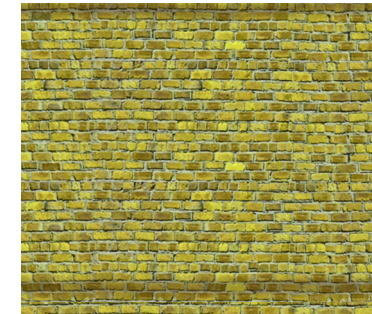
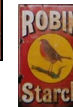




Lightly score down the middle and fold and fold backwards



CHIMNEY



There are more roof strips supplied than you require just in case any get damaged or spoiled during the assembly process.

BOTTOM



TOP

ROOF STRPS

TOP



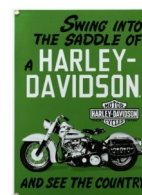
BOTTOM



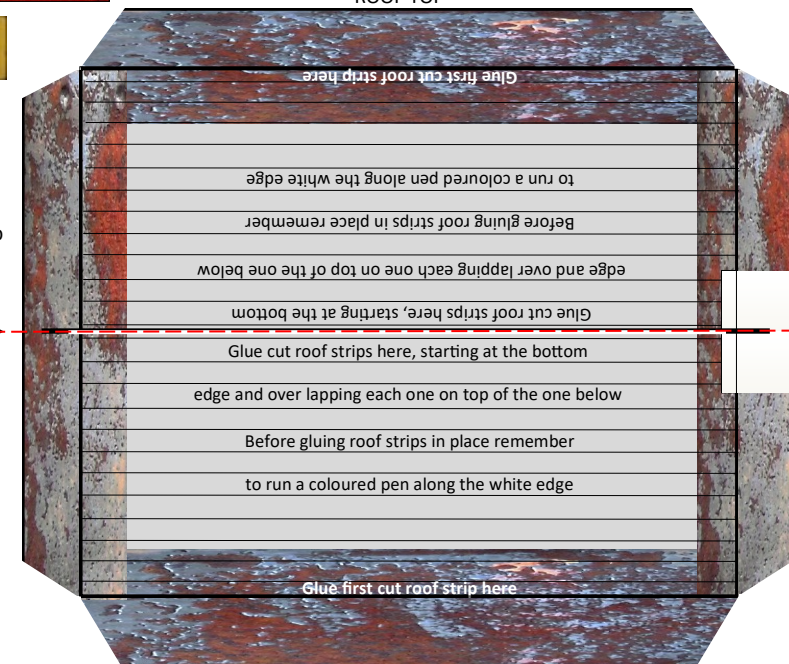
Before gluing roof strips in place remember to run a coloured pen along the white edge



Score down the middle or the red dotted line and fold back 45 degrees once you have glued the roof top onto the roof base.



ROOF TOP





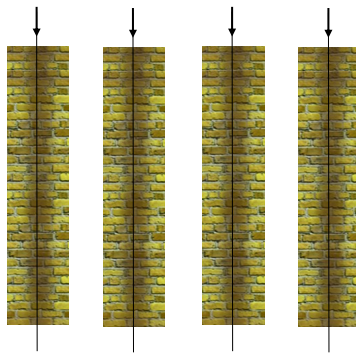
# SPARE WALKWAYS

**3DK**  
 OO GAUGE 4MM  
 OO-1H YELLOW  
 BRICK OFFICE  
 3DK© June 2014  
 Sheet 4 of 5

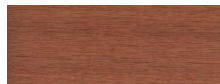
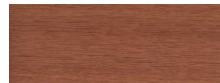


## CORNER COVERS

Lightly score down the middle  
and fold and fold backwards



## CHIMNEY POT



**GOODS OFFICE**



S. MacDonald & Son  
 Clock Makers  
 (Established 1908)



**MARINE ENGINEERS**

**C. Cooper Auto Mechanic**

**COAL OFFICE**

**J DAWSON & SONS  
 BOILER MAKERS**

**J Worth & Sons**

**GOODS OFFICE**



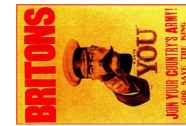
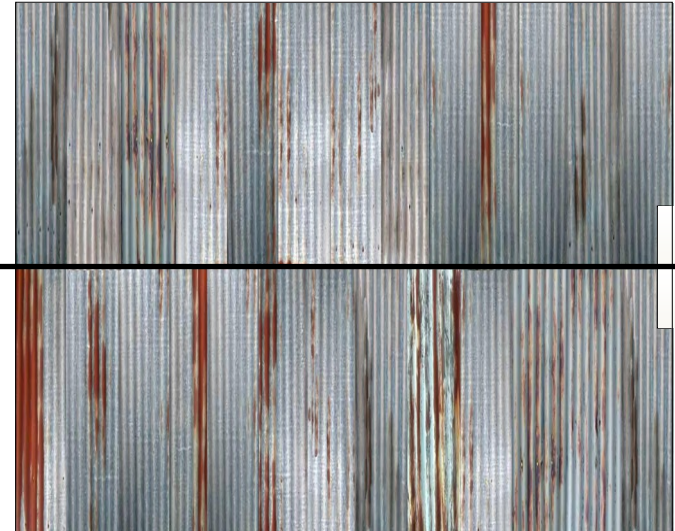
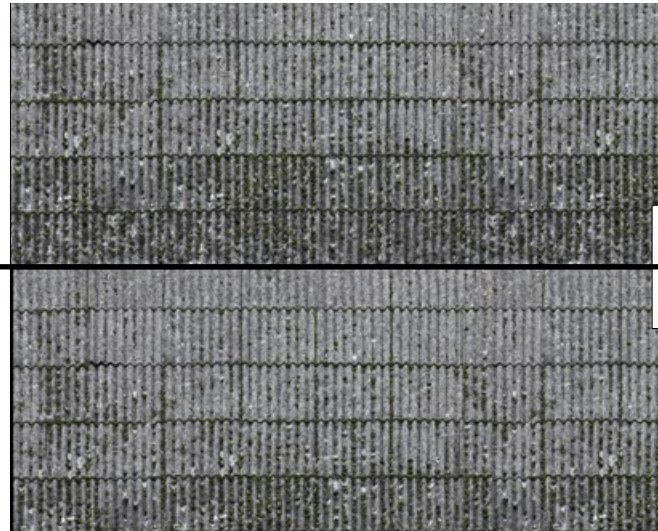
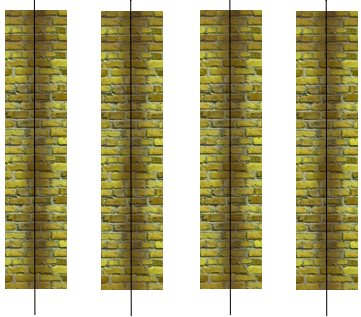
**COAL OFFICE**

**PLUMBERS & STEAM FITTERS**

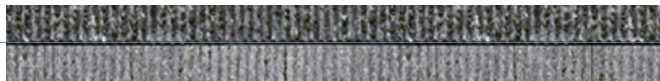
**BUILDING BASE**



SPARE  
CORNER COVERS



ROOF RIDGE FOR ALTERNATIVE ROOFING



ROOF RIDGE FOR ALTERNATIVE ROOFING



Lightly score down the middle  
and fold and fold backwards



ROOF RIDGE FOR ALTERNATIVE ROOFING

