

Switch now and save thousands of dollars on your high energy costs while reducing your carbon footprint



The Solflow Hybrid Controller

This is the IP and mastermind of the SolFlow PV Direct Hot Water solution. When the water temperature reaches optimum temperature the controller simply stops the energy flow to the tank. The controller diverts excess energy to other home appliances or to Battery Storage. SolFlow's IP includes a uniquely designed DC element that has been engineered so that with the controller it generates more usable energy from each solar panel than comparable grid connect systems.

Simple and easy to install

Solfow PV Direct Hot Water is a solution that's simple to install, with no pumps to replace, no moving parts and no plumbing on your roof.

With SolFlow PV Direct Hot Water, 3, 6, 8 or 12 PV solar panels are installed on your roof to harness the sun's power, which is directed through our controller to a DC element in a ground mounted storage tank to heat the water to the optimum temperature. The SolFlow controller monitors the process and when optimal temperature is reached the DC electricity can be diverted either to other appliances or Battery Storage using an optional diverter.

Unlike some other solar hot water technologies, there are no additional pipes or expensive pumps required and tubes don't need to be insulated from the cold.

Cabling is minimal and therefore easier to install and suffers less power loss.

In fact, the Direct Current generated by the solar modules and fed directly into the heating element has an electrical efficiency of 99.6%, saving you even more money on your water heating bills.

And to ensure there's always hot water on cloudy days or at night time, the SolFlow solution allows you to add an electric or gas booster to ensure a round-the-clock supply of piping hot water.

Technical Specifications

| MODEL NO | TANK SIZE | PANEL NO | OPTIONAL INVERTER |
|------------------------------|-----------|----------------|-------------------|
| PVD100 | 100L | 3 Panels | NO |
| PVD200 (PVD200D) Diverter | 200L | 6 or 8 Panels | YES |
| PVD270 (PVD270D) Diverter | 270L | 8 or 12 Panels | YES |
| PVD400 | 400L | 12 Panels | NO |

Panel number dependant on location. Can use smaller tank size with larger solar array for faster heating

About Solflow

SolFlow is an innovative Australian company developing and manufacturing PV Direct Products. Established in 2000 with offices in Darwin N.T. and a manufacturing plant in Adelaide.

Our focus is on creativity, invention and energy neutral solutions. We maintain a full-time Research & Development Division that has successfully developed a range of innovative PV Direct energy DC products, powered directly by PV solar panels

and utilising our Patented Hybrid Technology. Our focus is on DC energy appliances as we believe this is the key to making the dream of being 'energy neutral' an economic reality.

Our ultimate aim is to make as many Australians as possible self sustainable and Australia itself a world leader in PV Direct technology. Just as our sunburnt country should be...

SolFlow is proud to be an affiliate company of Darwin Solar and Energy Mate Australia

SALES ENQUIRIES

Tel: 1300 765 272 Office: 08 8919 6181 Email: Sales@solfow.com.au

ADDRESS

Shop 1, 35 De-Latour Street, Coconut Grove, NT 0810

www.solfow.com.au



PV DIRECT SOLAR HOT WATER
Australia's most energy efficient system



Save over 70% off your home water heating bills

ONE of the biggest energy users in any home is water heating—it can account for up to a quarter of total energy use, costing you big dollars every year.

That's why so many Australians are installing a highly efficient SolFlow PV Direct Hot Water solution in their home or business. It will reduce your carbon footprint and deliver significant savings on the cost of heating your water. All year round.

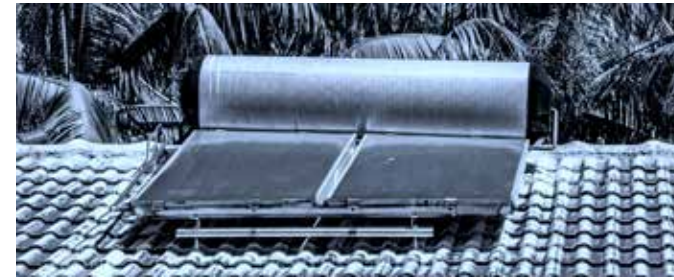
In fact, recent research shows that a Solflow solution integrated into an existing home heating system can save over 70% of the energy required to heat water in an average 4-person household*.

PV Direct Hot Water Tank available in other colours



solflow
SOLAR POWERED PRODUCTS

Which solar system is right for you?



The Old

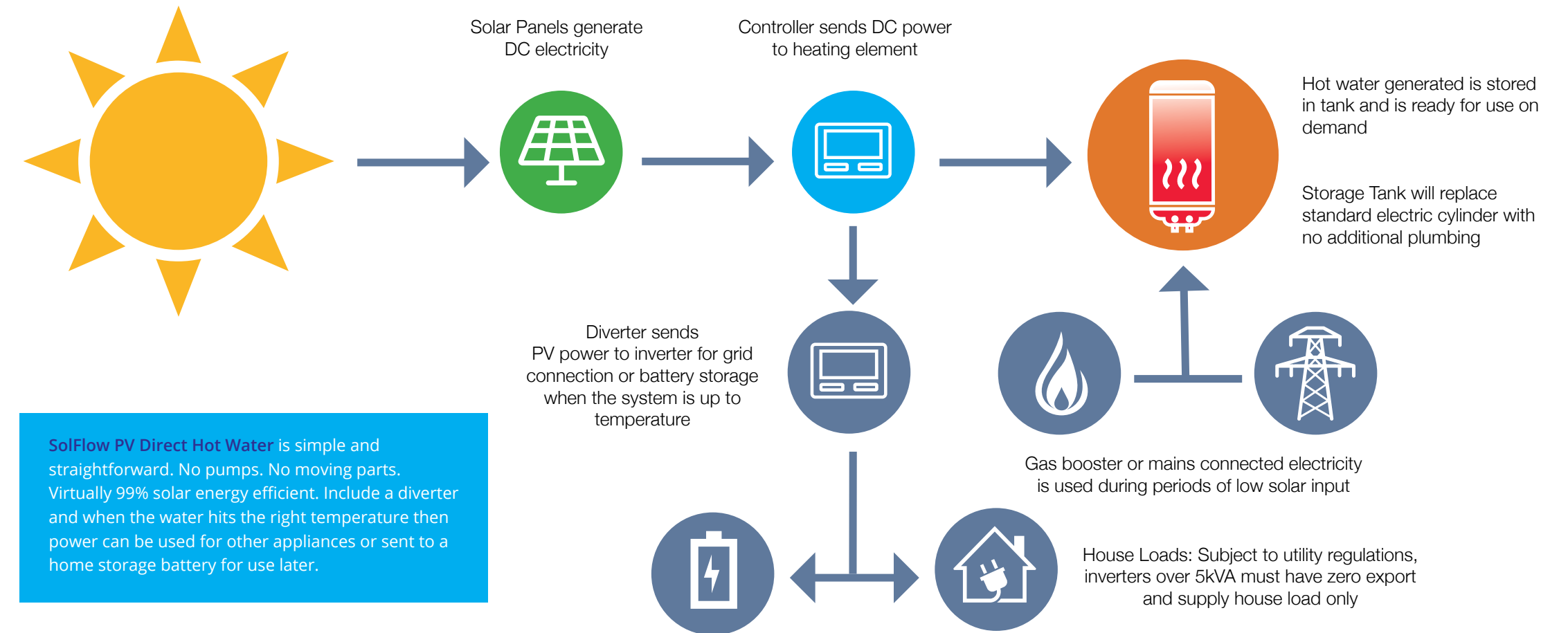
Traditional solar hot water systems (known as solar thermal systems) create hot water by having tubes or copper pipes filled with water running through them. The water is simply heated by the sun, and the hot water flows into a storage tank. That's why you'll often see a storage tank on the roof or side of the house. With this technology it is only possible to achieve double the ambient temperature ie: 18c ambient temperature = max 36c water temperature with mains electricity or gas raising the temperature to 60c.



The New

Solflow PV Direct Hot Water however represents a real breakthrough in solar water heating technology. Here, PV solar panels generate DC electricity when hit by sunlight. This sun-generated energy is then harnessed and directed via the solflow controller straight to the tanks unique DC element. In a few hours hot water reaches the desired temperature. The Solflow System not only heats water but has the option to divert the ongoing energy generated into usable electricity or battery storage. For you, its smart technology represents more than just an efficient solar hot water solution, it's about making your home self sustainable and energy neutral.

How it works



Why Choose SolFlow?

- Australian creativity and inventiveness
- Designed & manufactured especially for Australian conditions
- An international leader in PV Direct technology and products.
- Lower energy costs than conventional solar
- You can divert excess energy back to the grid or to battery storage
- Energy independence and security
- 5 Year product warranty
- Patent applied technology



Solflow PV Direct Hot Water solution saves you in so many ways!

SolFlow's PV Direct Hot Water can offset other energy loads at your property, saving you more money than a traditional system.

Purchase the Solflow PV Direct Hot Water and you will generate savings from Day One and that's just the start! Coupled with a solar inverter and other PV Direct products it pays for itself in no time helping to make your home energy neutral. Imagine a life free of gas or electricity bill shock!

Plus, you'll also be increasing the value of your property.

solflow
SOLAR POWERED PRODUCTS