

New England Road Cycling League Championship Race
Wednesday May 15th, 2019
New Hampshire Motor Speedway- Loudon NH
"Frontier Course"
Hosted by Phillips Andover Academy

Hello coaches-

Andover is looking forward to hosting the league Championship race this coming Wednesday at the Motor Speedway. We will be using the "Frontier Course" which is located on the Speedway grounds **behind** the NASCAR oval. The course is a 1 mile loop that includes a moderately technical and fast left-hand corner leading into a short climb. Below you will find several images to help you get oriented to where the course is relative to the Speedway entrance. Here also is the race segment on Strava. <http://strava.com/segments/619597>

As with all races at the Speedway, teams must register and pay the gate fee before they can enter the grounds. On your way to the Frontier Course, there is a bathroom facility on the right not far from the Speedway entrance. Speedway staff can direct you to the course and the changing facility. It is a good idea to have your riders change there as there are **no** facilities or bathrooms at all out on the Frontier Course. Directions to the Speedway are here: <https://www.nhms.com/trip/directions/>

Tentative Timeline:

2:00-3:00 Team Check-in and course preview/warm-up

3:15 Coaches Meeting at the start line

3:30 Races Begin. Each race category will finish before the next race begins

1. Girls A will race 10 laps
2. Girls C will race 8 laps
3. Boys A will race 12 laps
4. Boys B will race 10 laps
5. Boys C will race 8 laps

Registration: Please send any roster updates and/or changes to JD at jdbilodeau@pioneerevents.com

JD will be timing and scoring this event, **with points being doubled**. At the conclusion of all five category races, JD will tabulate results and we will announce top three individual riders per category as well as top three teams per category and top three teams overall.

Safety:

Riders must wear a helmet whenever they are on a bike.

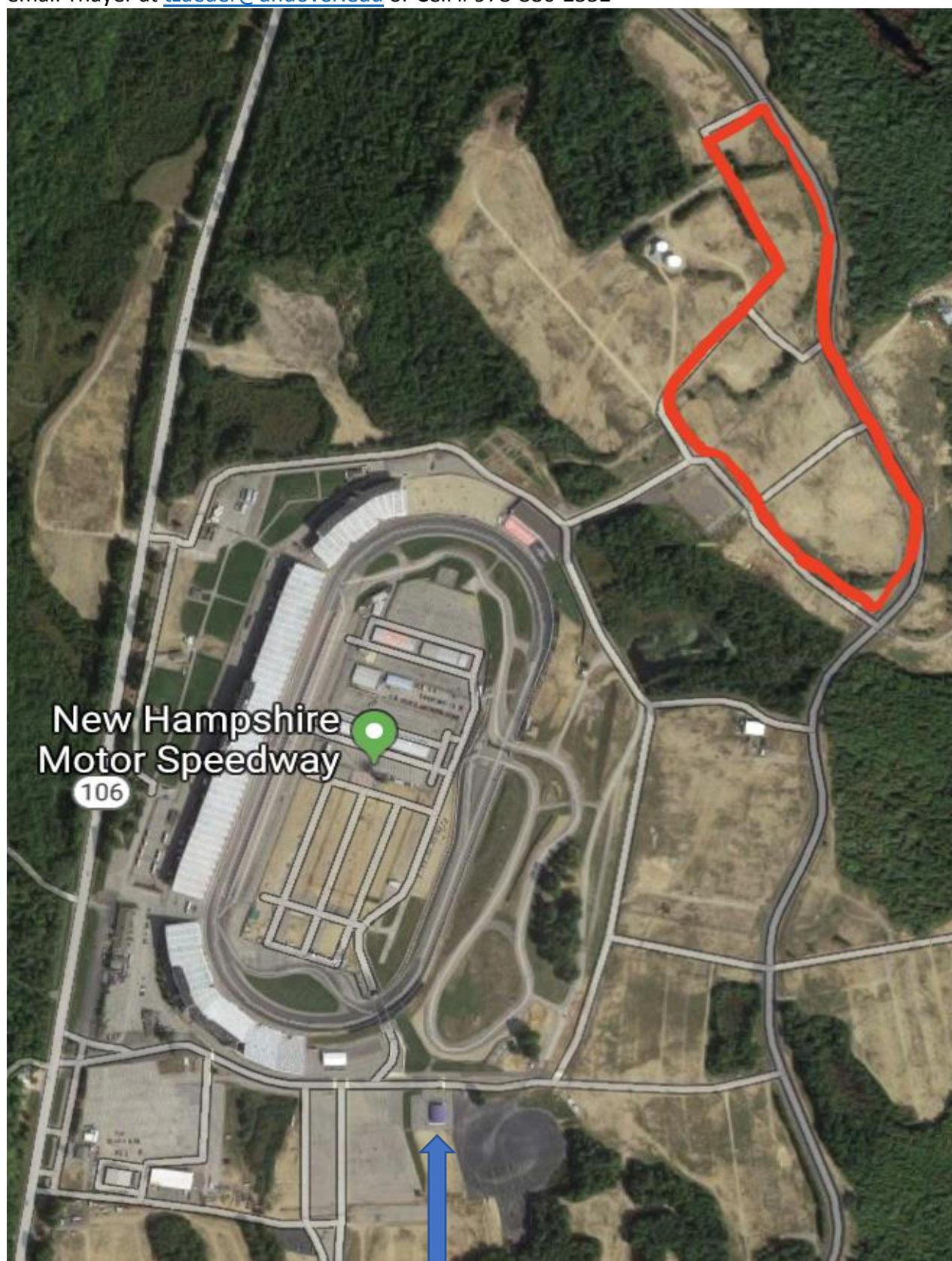
All riders must wear gloves for this event.

Dropped or lapped riders must stay to the right at all times.

Riders who have a mechanical issue may rejoin the group provided they have not missed numerous laps. No riders with a mechanical will be allowed to rejoin on the final lap.

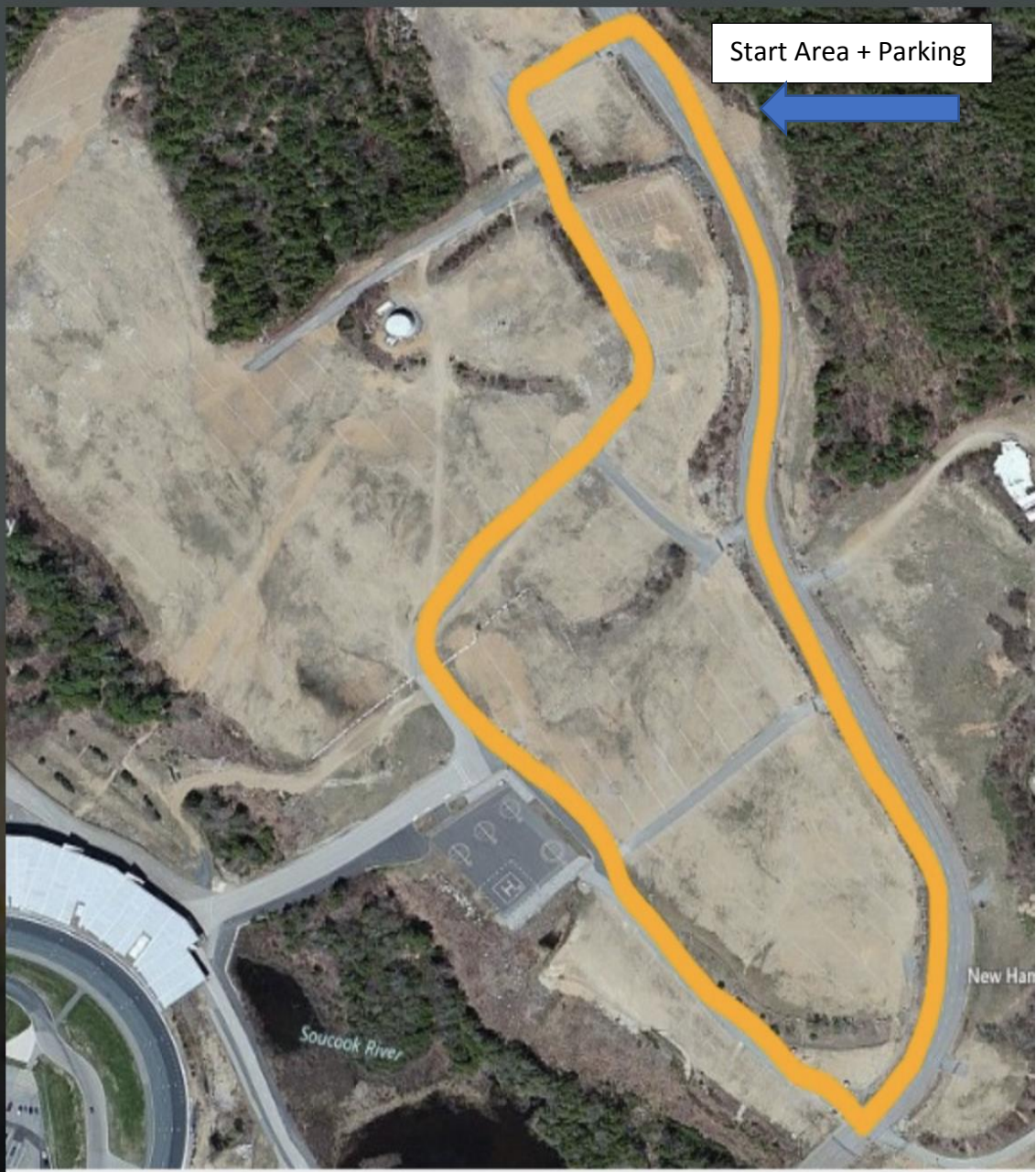
EMT and Ambulance support will be provided by the Motor Speedway.

We are looking forward to an exciting final on Wednesday. Questions or adjustments please email Thayer at tzaeder@andover.edu or Cell # 978-886-2352



Frontier Course in Red above

Bathrooms and Changing Facility



FRONTIER COURSE