

## And the FUNDING?

- ELCA World Hunger is funded with designated gifts – it is not included in your benevolence giving.
- Our congregations are filled with generous people who are passionate about feeding the hungry. ELCA World Hunger is a great way to expand on what we are already doing locally.
- Gifts come in all forms and sizes – collections and noisy offerings, checks, corporate employee matches, IRA distributions, generous \$1k+ gifts by individuals and also legacies through estates
- When you share a gift with ELCA World Hunger, you are making a permanent investment in the life of a community.

Make your congregation's checks out to the New Jersey Synod, noting that this gift is for the Bishop's Challenge, so that your congregation's giving can be tracked and properly credited.

**The Bishop's  
Challenge:  
Changing the  
World, One  
Cow at a  
Time!**



**New Jersey Synod**  
**Evangelical Lutheran Church in America**  
God's work. Our hands.

relationships, and works directly with local partners and through other agencies that are on the ground.

- Finds new creative solutions by listening to people, building relationships and encouraging participants to become leaders, so that effective action can take root and grow.
- Responds to the needs articulated by the people in the place.
- Participates through the power of the Holy Spirit in transforming lives and empowering people who have been ignored and marginalized.

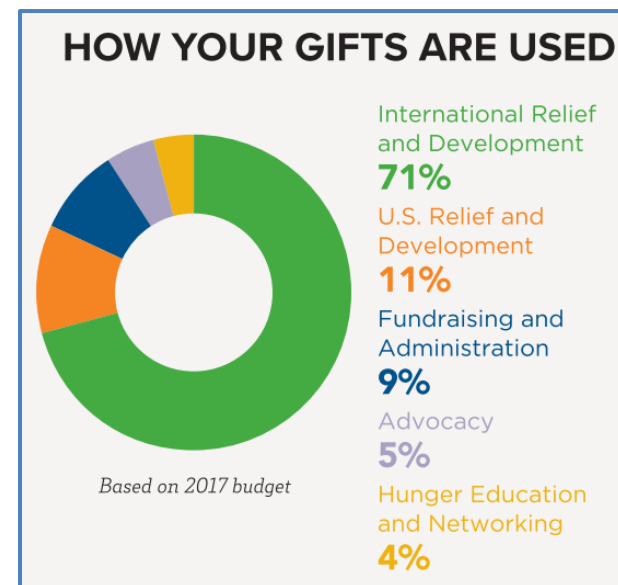
## WHY ELCA World Hunger?

- Because Jesus cares about hungry people and directs us to feed them!
- Working together, we reach people in ways we never could as individuals or congregations.
- This is OUR program: operating with an enviably low overhead and according to our values.
- The “world” of World Hunger includes programs in Red Bank, Hoboken, Toms River, Camden, New Jersey
- Administrative costs are low, because congregations participate in the job of fundraising and encouraging giving.

## HOW? ELCA World Hunger

- Depends on the generosity of congregations and individuals throughout the ELCA.
- Focuses on places where the Lutheran church already has congregations and other

## WHERE do our gifts go?



- Annually there are ~250 international partnerships and ~350 domestic hunger grants made, in agreements that last 1 to 3 years.
- ELCA World Hunger supports ELCA Advocacy in Washington DC, the Lutheran Office of World Community in New York City and 15 state public policy offices.
- Equipping and resourcing the ELCA for action, learning and giving in poverty and social justice powers the movement that is ELCA World Hunger ministry.