

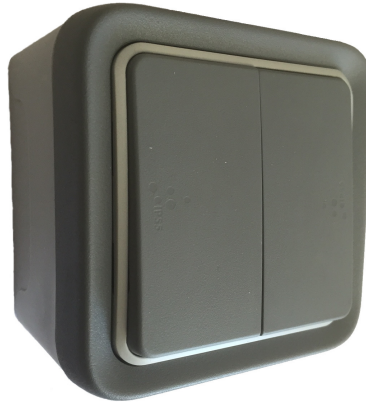


C Prox Ltd (inc Quantek)

59 Sheffield Road, Dronfield, S18 2GF

+44(0)1246 417113 sales@cproxltd.com www.quantek.co.uk

GO-PUSH2 User Manual



Description

Wireless 868MHz wall mount 2 channel push button control, for use with JCM control panels with built in receiver and standalone receivers.

Technical specification

Operating frequency	868.35MHz rolling code
Power supply	3Vdc CR2032
Power consumption	12mA
Radiated power	<25mW
Operating temperature	-20°C to +55°C
Tightness	IP55
Dimensions	77X70X50mm

Installation

Remove the front cover by levering it out with a small screw driver. Fix the back box to the wall within 30 metres of the control panel or receiver with 2 screws. The switch mechanism can also unclip for easier access (and to change the battery). Replace after fixing the back box.

Programming

Open the receiver and press the program button for 1 second until an audible beep is heard, release the button. The receiver is now in programming mode. Within 10 seconds, press one of the buttons on the GO-PUSH2. The receiver will beep to confirm programming. After 10 seconds the receiver will exit programming mode, signified by two consecutive beeps.

Operating

The left push button is channel 1, the right push button is channel 2.
Maximum transmission time for each activation is 10 seconds.