



NIPPON PRIMEX INC.

NP-P2061M / NP-P2062M

Front operation



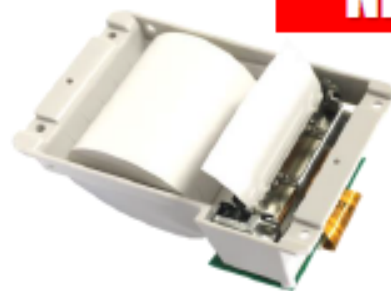
NP-P2061D-AW



NP-P2062D-BW

NP-P20AR

NEW MODEL



Flexible mounting options!

- Fully upward compatible with NP-2021/2025 series
- Same external dimension as NP-2021 even with auto cutter (P2062M)

Model name	NP-P2061M-AW NP-P2062M-AW	NP-P2061M-BW NP-P2062M-BW	NP-P20AR
Print method	Direct line thermal dot		
Print speed	Max.100 mm/sec (DC8.5V)		Max.75 mm/sec (DC8.5V)
Resolution	8dots/mm (203dpi)		
Number of dots / line	384dots		
Paper width	58mm		
Print width	48mm		
Paper diameter	Max.φ50 mm		
Character	English, Polish, Russian, Scandinavian, Turkish		
Barcode	UPC-A, UPC-E, EAN-13, EAN-8, CODE39, ITF, CODABAR, CODE128, CODE93, GS1 DataBar, QR Code (model2)		UPC-A, UPC-E, EAN-13, EAN-8, CODE39, ITF, CODABAR, CODE128, CODE93
Interface	Parallel(Centronics), Serial(RS232C), and USB(V2.0 Full Speed)		Serial (RS232C)
Cutter	NP-P2061M-AW/-BW : Tear Bar NP-P2062M-AW/-BW : Auto Cutter		-
Operating voltage	DC5V~8.5V		DC5~8.5V, DC3.3V (circuit voltage)
External dimensions	101(W)x66(D) x116(H)mm	96(W)x66(D) x111(H)mm	77.7(W)x105.1(D) x49.5(H)mm (Horizontal setting only)