

THOUVENOT, WADE & MOERCHEN, INC. ENGINEERS SURVEYORS PLANNERS



- CORPORATE OFFICE  
4940 OLD COLLINSVILLE RD.  
SWANSEA, ILLINOIS 62226  
TEL (618) 624-4488  
FAX (618) 624-6688
- WATERLOO OFFICE  
113 SOUTH MAIN STREET  
WATERLOO, ILLINOIS 62298  
TEL (618) 939-5050  
FAX (618) 939-3938
- EDWARDSVILLE OFFICE  
600 COUNTRY CLUB VIEW, SUITE 1  
EDWARDSVILLE, ILLINOIS 62025  
TEL (618) 656-4040  
FAX (618) 656-4343
- ST. LOUIS OFFICE  
720 OLIVE ST., SUITE 200AA  
ST. LOUIS, MISSOURI 63101  
TEL (314) 241-6300  
FAX (314) 241-2391
- ST. CHARLES OFFICE  
400 N. 5TH STREET, SUITE 101  
ST. CHARLES, MISSOURI 63301  
TEL (636) 724-8300  
FAX (636) 724-8304

| PROFESSIONAL REGISTRATIONS          | LICENSE NO. |
|-------------------------------------|-------------|
| ILLINOIS PROFESSIONAL DESIGN FIRM   | 184-001220  |
| PROFESSIONAL ENGINEERING CORP.      | 62-035370   |
| PROFESSIONAL STRUCTURAL ENGR. CORP. | 81-005202   |
| ILLINOIS PROF. LAND SURVEYING CORP. | 048-000228  |
| MISSOURI PROFESSIONAL ENGR. CORP.   | NO 001528   |
| MISSOURI LAND SURVEYING CORP.       | NO 003416   |



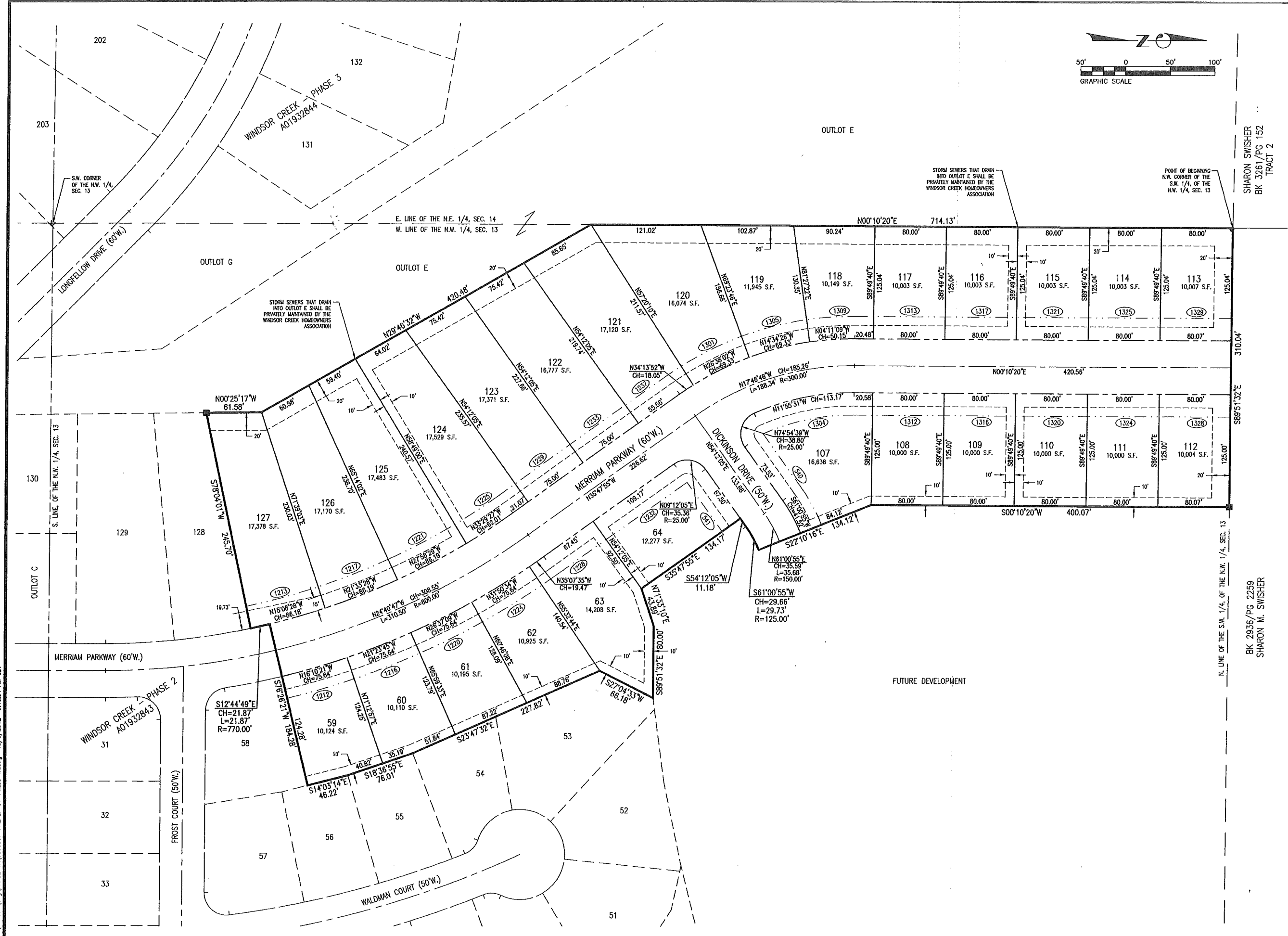
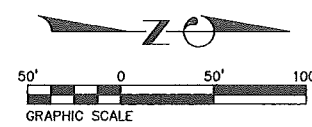
This professional seal is limited to the current Illinois minimum standards for a boundary survey.  
 Signature: *Edgar M. Barnal*  
 Signature Date: 11-30-2013  
 Expiration Date: 11-30-2014

**STATEMENT OF RESPONSIBILITY**  
 I hereby confirm that the document herein to be authenticated by my seal is related to the sheet, and I hereby disclaim any responsibility for all other drawings, specifications, estimates, reports or other documents or instruments relating to or intended to be utilized for any other part of the architectural, engineering or survey project.

**FINAL PLAT**  
 PROJECT: WINDSOR CREEK SUBDIVISION PHASE 4A CITY OF FALLON ST. CLAIR COUNTY, ILLINOIS

| REV | DATE | DESCRIPTION |
|-----|------|-------------|
|     |      |             |
|     |      |             |
|     |      |             |

|   |   |
|---|---|
| DRAWN BY: LEM   | SHEET                                       |
| DESIGNED BY: LEM                                      | 2   |
| CHECKED BY:   | OF 2 SHEETS                                 |
| APPROVED BY:  | FINAL PLAT PHASE 4A                         |
| PROJECT NUMBER: D01030653F                            |   |
| <input checked="" type="checkbox"/> ISSUED FOR REVIEW | <input type="checkbox"/> ISSUED FOR BIDDING |
| <input type="checkbox"/> ISSUED FOR CONSTR.           | <input type="checkbox"/> RECORD DRAWING     |



P:\030653.dwg PHASE 4A\030653F-FINAL-01-Phase 4A.dwg 10/8/2012 9:40:34 AM CDT

SHARON SWISHER  
BK 3261/PG 152  
TRACT 2

BK 2936/PG 2259  
SHARON M. SWISHER