

OCTOBER / NOVEMBER 2014

EPIC PLACES

LUXURY ESTATES, DESTINATIONS, LIVING AND DEVELOPMENTS

ELEGANT MASTERPIECE

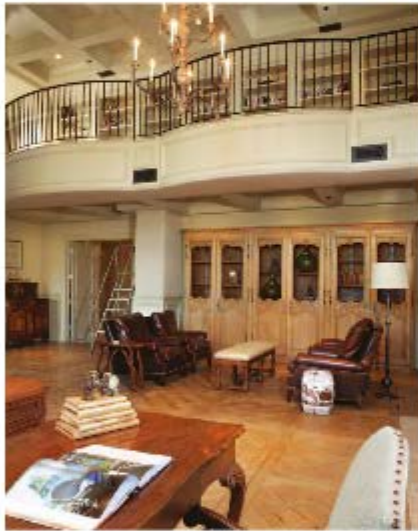
WITH SPECTACULAR VIEWS AT SILVERLEAF

THE RESIDENCES AT MANDARIN ORIENTAL, LAS VEGAS
STERLING AT SILVERLEAF



The design of this home is meticulous, with every detail cared for to the highest degree, creating beauty beyond just the surface. Limestone flooring imported from France, limestone fireplaces, custom wainscoting, moldings and millwork add an accent of luxury to the spaces in this estate, including an office featuring 2000+ square feet of hardwood flooring reclaimed from a French castle, a fitting touch for this palace of a home.






The elegance of this home does not stop there; the kitchen is an absolute masterpiece, featuring all “top of the line,” cutting edge appliances expected in a home of this grandeur. Furthermore, over one million dollars was spent on the gorgeous Clive Christian cabinetry imported from England, accented by lovely zinc counter tops and imported French fixtures. The home’s gourmet kitchen is a perfect setting for the finest meals to be created and served to your guests in the lavishly appointed formal dining room. An extraordinary wine room, allows for the perfect wine pairing of any meal to be on hand at all times. Overlooking the gorgeous desert scenery, and offering an exquisite view of the city lights at night is the luxurious wet bar, another of this estate’s many lineaments that make it perfect for entertaining.

EXPANSIVE GROUNDS, PATIOS AND VERANDAS MARK THE MAGNIFICENT POSITIONING OF THIS ESTATES LOT HIGH IN THE UPPER CANYON OF SILVERLEAF.



21297 NORTH 110TH WAY, SCOTTSDALE, ARIZONA

The landscape of this luxurious estate was finely crafted by Berdorf, complementing the opulent negative edge pool and spa featured on the property. Strategically placed patios and courtyards are designed to offer the best possible views of the area, and are absolutely advantageous to enjoying all that the spectacular scenery has to offer.

Silverleaf is one of the most exclusive communities in Scottsdale. Located just minutes away from secluded hiking trails, The Country Club at DC Ranch, and two expansive golf courses, luxurious recreation options abound for it's residents. With striking views of the surrounding area, magnificently designed living features, extravagant spaces for relaxing and entertaining guests, and access to all of the community's leisure time activities, this palatial residence provides a living experience comparable to the most exquisite homes anywhere in the world. 

Price: \$12,000,000 | Bedrooms 5 | Bathrooms 8 | Approx. Sq. Ft. 14,313

MIKE DOMER

480.861.8883

mike@mikedomer.com

www.MikeDomer.com



ELEGANT MASTERPIECE

WITH SPECTACULAR VIEWS *at Silverleaf*

BY JUSTIN CURTIS *Photography by Epic*



With stunning views and elegant surroundings in the exclusive Scottsdale, Silverleaf community, this gorgeous home is the envy of the entire neighborhood. Positioned on a large two acre plot, the 14,313 square foot home creates its own world of elegance, placing you in the heart of "the most livable city" while enjoying the peace and quiet expected of such a prosperous community.

