

PHOTORESIST  
MANUFACTURING  
& INNOVATION

KemLab Inc.  
Tel: (781) 281-0174  
Email: sales@kemlab.com  
Web: www.kemlab.com



SHORT LEAD TIMES • COMPETITIVE PRICING • PRODUCT SUPPORT • PHOTORESIST CUSTOMIZATION

## HARE SQ

Negative Tone Epoxy



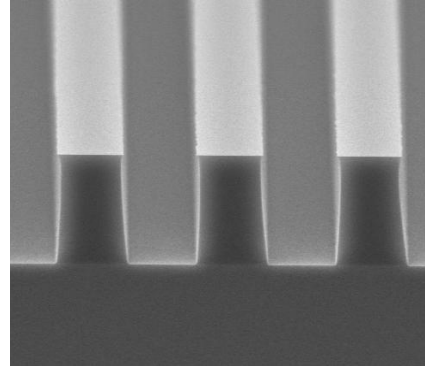
**NEGATIVE**

- 2 – 200\*  $\mu\text{m}$  FT
- APPLICATIONS: *microfluidics, MEMS*

\*Double-coat process available

## K-PRO

Advanced Packaging



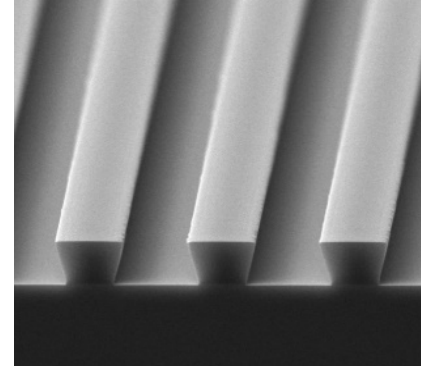
**POSITIVE**

- 5 – 50\*  $\mu\text{m}$  FT
- APPLICATIONS: *advanced packaging, TSV, bumping, plating*

\*Double-coat process available

## APOL-LO 3200

Negative Lift-Off

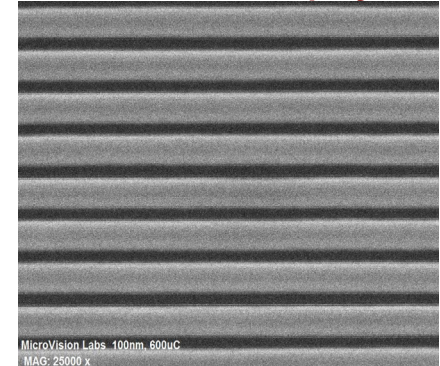


**NEGATIVE**

- 2 – 10  $\mu\text{m}$  FT
- APPLICATIONS: *compound semiconductors, LED*

## HARP eB & HARP-C

PMMA e-Beam / Copolymer

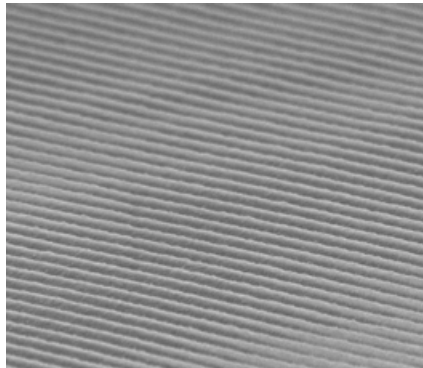


**POSITIVE**

- Up to 4.0  $\mu\text{m}$  FT
- APPLICATIONS: *e-Beam, T-gates, X-RAY LIGA, wafer thinning*

## KL 5302

Hi-Res Thin

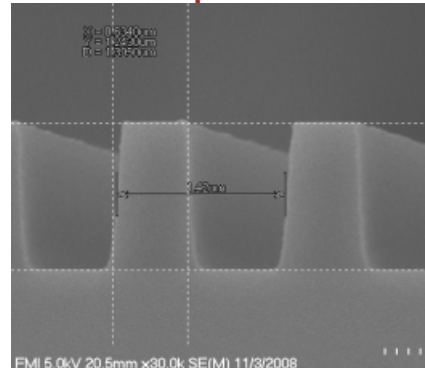


**POSITIVE**

- 0.2  $\mu\text{m}$  FT
- APPLICATIONS: *Interference Lithography, Diffraction Grating*

## KL 5300

General Purpose

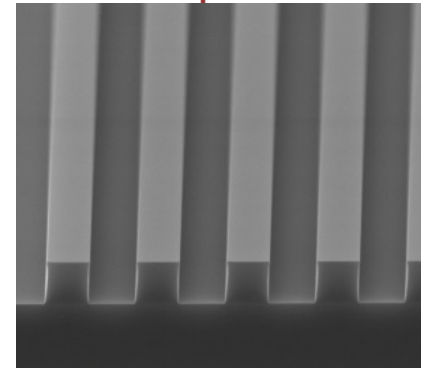


**POSITIVE**

- 0 – 2.5  $\mu\text{m}$  FT
- APPLICATIONS: *IC Fabrication*

## KL 6000

General Purpose Thick

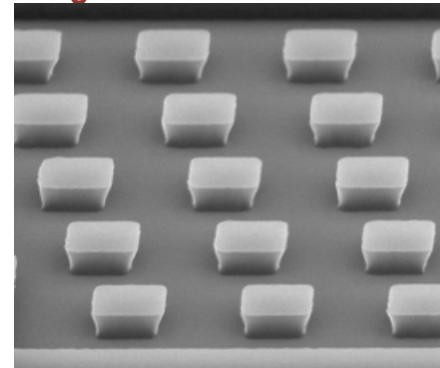


**POSITIVE**

- 2.5 – 12  $\mu\text{m}$  FT

## KL IR

Image Reversal Lift-Off



**POSITIVE/NEGATIVE**

- 1 – 2.5  $\mu\text{m}$  FT

Tone	Product Suite	Products	Competitive Product(s)	Film Thickness $\mu\text{m}$																				Exposure $\lambda$				Dev					
				Min	Max One Coat	0.2	0.5	0.8	1	1.5	2	2.5	3	4	5	6	7	8	9	10	20	30	40	50	100	i-line 365nm	g-line 436nm	Broadband	405nm	TMAH 0.26N	Potassium Borate	HARE SQ	KOH
Positive	<b>KL 5302 Hi-Res</b>	KL 5302 Hi-Res		0.2	-	█																				•	•	•	•				
Positive	<b>KL 5300</b> General Purpose Thin	KL 5302		0.2	-	█																				•	•	•	•				
		KL 5305	<i>S1805™</i>	0.5	0.8		█																			•	•	•	•				
		KL 5310	<i>S1808™/S1811™</i>	0.8	1			█																			•	•	•	•			
		KL 5315	<i>S1813™/S1818™</i>	1	2				█																		•	•	•	•			
Positive	<b>KL 6000</b> General Purpose	KL 6003	<i>SPR™220-3.0/S1827™</i>	2.5	4					█																•	•	•	•				
		KL 6005	<i>SPR™220-4.5</i>	4	7							█														•	•	•	•				
		KL 6008	<i>SPR™220-7.0</i>	6	10									█												•	•	•	•				
Positive	<b>K-PRO</b> Advanced Packaging	K-PRO 7		5	10																					•	•	•	•				
		K-PRO 15	<i>AZ® 4620</i>	5	25*																					•	•	•	•				
Negative	<b>APOL-LO 3200</b> Negative Lift-Off	APOL-LO 3202	<i>AZ®nLOF 2020</i>	2	4																					•	•	•	•				
		APOL-LO 3204	<i>AZ®nLOF 2035</i>	3	6																						•	•	•	•			
		APOL-LO 3207	<i>AZ®nLOF 2070</i>	5	10																						•	•	•	•			
Pos/Neg	<b>KL Image Reversal</b>	KL IR-15 Lift-Off	<i>AZ®5214E</i>	1	2																					•	•	•	•				
		KL IR-15		1	2																					•	•	•	•				
Negative	<b>HARE SQ</b> High Aspect Ratio Epoxy	HARE SQ 2	<i>NANO™ SU-8 2-25</i>	1.5	5																					•	•	•	•				
		HARE SQ 5	<i>NANO™ SU-8 2-25</i>	4	10																						•	•	•	•			
		HARE SQ 10	<i>NANO™ SU-8 2-25</i>	5	25																						•	•	•	•			
		HARE SQ 25	<i>NANO™ SU-8 2-25</i>	10	50																						•	•	•	•			
		HARE SQ 50	<i>NANO™ SU-8 25-50</i>	25	100*																						•	•	•	•			