

SW-07 Keypad Switch Technical Information



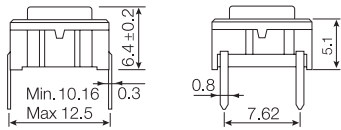
Technical Data

- through-hole or SMD
- 50mA/24VDC
- single pole/momentary
- 10.000.000 operations life time
- IP67 sealing
- temperature range:
 - low temp: -40/+115°C
 - high temp: -40/+160°C
- actuator:
 - in PPS: -40/+160°C
 - in polycarbonate: -40/+85°C

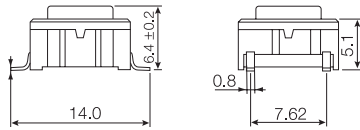
SW-02 Key Pad Switch (Obsolete)

SW-07 Keypad Switch

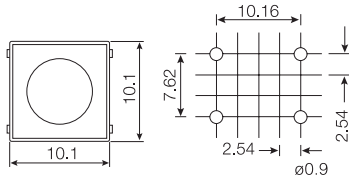
Dimensions (through-hole)



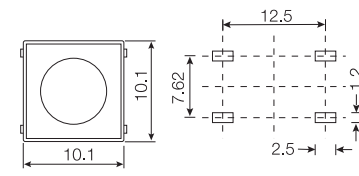
Dimensions (SMD)



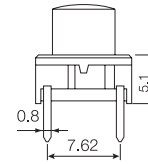
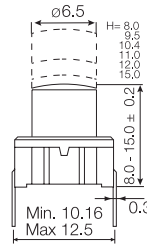
PCB layout



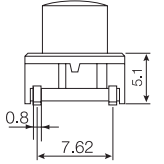
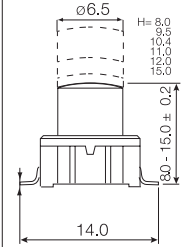
PCB layout



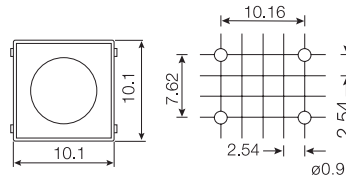
Dimensions (through-hole)



Dimensions (SMD)



PCB layout



PCB layout

