

Topper Northern Championships

Organised by Killyleagh Yacht Club
in conjunction with Topper Ireland
24th-25th August 2019



SAILING INSTRUCTIONS

1. Rules

- 1.1 The regatta will be governed by the rules as defined in The Racing Rules of Sailing 2017-2020 (RRS).
- 1.2 The prescriptions of the Irish Sailing Association and the rules of Topper Class Association of Ireland (ITCA IRL) shall apply.
- 1.3 If there is a conflict between these Sailing Instructions and the Notice of Race, these Sailing Instructions prevail. This changes rule 63.7.
- 1.4 All times are GMT.
- 1.5 If there is a conflict between languages the English text will take precedence.
- 1.6 The notation [DP] in a rule in the SI means that the penalty for a breach of that rule may, at the discretion of the protest committee, be less than disqualification.

2. Notices to Competitors and Communication with Competitors

- 2.1 Notices to competitors will be posted on the Official Notice Board.

3. Changes to Sailing Instructions

Any change to the sailing instructions will be posted at least one hour before the scheduled start time on the day it will take effect, except that any change to the schedule of races will be notified by the race committee before 2100 on the day before it will take effect.

4. Signals made Ashore

- 4.1 Signals made ashore will be displayed at the flag pole adjacent to the starter's hut.
- 4.2 When flag AP is flown ashore, '1 minute' is replaced with 'not less than 45 minutes'. This changes flag AP in the Race Signals.
- 4.3 Boats shall not go afloat until flag D is displayed ashore with a sound signal.

5. Schedule of Races

Day/Date	Time	
Fri 23.08.19	18.00-20.00	Registration
Sat 24.08.19	9.00 – 10.00	Registration
	10.30	Competitors Briefing
	11.55	First Gun
Sun 25.08.19	10.55	First Gun
	15.00	No warning signal may be made after this time
	ASAP After Last race	Prize Giving

- 5.1 Boats sailing with the 4.2m² sail shall, while racing, display a coloured streamer as supplied by the race office, from the masthead.
- 5.2 No warning signal will be made on the last day of the event after 15:00hrs.
- 5.3 To alert boats that a race or a sequence of races will begin soon, an orange flag may be displayed with one sound at least five minutes before a warning signal is displayed.
- 5.4 One extra race per day may be sailed, provided that the change is made according to SI 3.

6. Flags used for warning signals and othersignals

The class flag for the 5.3 m² Full rig fleet will be Flag T & the class flag for 4.2 m² fleet will be numeral pennant 6.

7. Racing Area

The racing area will be off Killyleagh Yacht Club to the south of Don O'Neill Island and north of Skate Rock. The race area will be no more than 1.0 nm from shore. See Appendix1.

8. The Courses

- 8.1 All races will be sailed on the same course area. Appendix 2 shows the course diagram for each fleet.
- 8.2 Marks will be orange and yellow pillar, or pyramidal marks as shown in appendix 2 and will be described during the competitor briefing.
- 8.3 The target time for the first boat is 45 minutes**, but a shorter or longer time (whether or not the course is shortened) will not be grounds for redress. This changes rules 60.1(b) and 62.1(a). (**This target time may be reduced to 35 minutes in the case of adverse weather conditions)

9. The Starting Line, Recalled Black Flag Starts and U Flag Starts

- 9.1 The start line will be between the mast displaying a orange flag on a committee vessel and an outer distance mark
- 9.2 A port end rib is not considered a mark of the course.
- 9.3 Boats whose warning signal has not been made shall avoid the starting area during the starting sequence for other fleets.
- 9.4 A boat starting later than four minutes after her starting signal will be scored Did Not Start (DNS) without a hearing. This changes rules A4 and A5.
- 9.5 If a start under rule 30.4, Black Flag Rule is recalled, the sail numbers of the boats identified in the triangle will be displayed on a board at the stern of the race committee vessel for a minimum time of 3 minutes. This changes rule 30.4. Any boat so notified that she has been disqualified shall not sail in any restart or re-sail of that race.
- 9.6 The race officer may decide that the 4.2 fleet will start at the same time as the 5.3 fleet. If this is the case, competitors will be informed at the briefing and a notice placed on the event notice board. This system will be in place for the duration of the event.

10. Change of the Next Leg of the Course

- 10.1 To change the next leg of the course, the race committee will move the original mark (or the finishing line) to a new position. The change will be signaled before the leading boat has begun the leg, although the mark may not yet be in the new position. Any mark to be rounded after rounding the moved mark may be relocated without further signaling to maintain the correct course configuration.
- 10.2 Except at a gate, boats shall pass between the race committee vessel signaling the change of the next leg and the nearby mark, leaving the mark to port and the race committee vessel to starboard. This changes RRS 28.

11. The Finish

- 11.1 The finishing line will be between a mast displaying a blue flag on a committee vessel and a large orange pillar buoy at the outer end
- 11.2 In addition to rule 32, the race committee may also award a finishing score to a boat that is still racing by displaying to her from a committee vessel (which may be in motion) flag W with one sound signal. A boat so notified is no longer required to sail the course, shall stop racing and shall return to the starting area, or return ashore if there is no more racing. A finishing score under this sailing instruction will be the score she would have received had she sailed the course and finished within any time limit, without gaining or losing any place. However, when two or more boats that are overlapped are notified, they will be scored as if they were tied. The decision by the race committee to use this procedure or not to use it shall not be grounds for requesting redress. This changes rules 60.1(b) and 62.1(a).

11.3 After finishing and clearing the finishing line, boats shall keep clear of the finishing area and of all boats not yet finished.

12. Penalty System

12.1 Appendix P shall apply.

12.2 Rule P2.3 shall not apply and rule P2.2. is changed to that it will apply to all penalties after the first one.

13. Outside Help

Rule 41 is changed to allow help from a race committee vessel to recover after a capsize or to return the competitor to the boat.

14. TimeLimits

14.1 If no boat has passed Mark1 within 30 minutes of the start the race will be abandoned.

14.2 If no boat finishes within 90 minutes, the race may be abandoned.

14.3 Abandonment under SI 14.1 or 14.2 will not be grounds for redress. This changes rules 60.1(b) and 62.1(a).

15. [DP] Declarations

A boat that retires before finishing or takes a one-turn penalty or a two-turn penalty under rule 44.2 shall record the details on the Declaration Form before the end of protest time. Declarations may be made near the tally board or in the Starter's Hut.

16. Protests and Requests forRedress

16.1 Protests forms are available at the race office or in the Starter's Hut. Protests and requests for redress shall be delivered to the race office within the time limit.

16.2 For each class, the protest time limit is 30 minutes after the last boat has come ashore after the last race of the day. The same time limit applies to protests by the race committee and protest committee about incidents they observe in the racing area and to requests for redress.

16.3 A notice will be posted no later than 30 minutes after the protest time limit to inform competitors of hearings in which they are parties or named as witnesses. This is also the notification required by rules 61.1(b) and 63.2. Hearings may begin without a notice and within protest time when the parties are available.

16.4 On the last scheduled day of racing, a request for re-opening a hearing shall be delivered:

- (a) within the protest time limit if the party requesting re-opening was informed of the decision on the previousday.
- (b) no later than 15 minutes after the party requesting re-opening was informed of the decision on thatday.

This changes rule 66.

17. Scoring

17.1 The event will be scored by Appendix A, low point system.

17.2 The first sentence of rule A4.2 is deleted and replaced with:

17.3 All other boats, including a boat that did not start, a boat that finishes and thereafter retires or is disqualified, shall be scored points equal to one more than the number of boats entered in their respective fleet.

17.4 A minimum of one race is required to constitute any championship.

17.5 When fewer than four races have been completed, a boat's series score will be the total of her race scores. When four to six races have been completed a boat's series score will be the total of her race scores excluding her worst score.

18. [DP] Safety

18.1 Competitors shall wear personal flotation devices at least CE50 Newtons or equivalent at all times when afloat except when adjusting clothing. This changes rule 40. Wet suits and dry suits are not adequate personal buoyancy. Flag Y will not be displayed.

- 18.2 A boat shall comply with an instruction from the organizing authority, the race committee, a patrol boat of the race committee or an equipment inspector that she shall not go afloat, or shall return ashore or shall take some other action. The instruction will not be grounds for requesting redress. This changes rules 60.1(b) and 62.1(a).
- 18.3 A patrol boat in close attendance to a competitor in difficulty is an obstruction.
- 18.4 A boat that retires from a race shall notify the Race Committee or the Race Office as soon as possible.
- 19. [DP] Tallies**
- 19.1 All competitors shall tally out before launching, and tally in after returning ashore.
- 19.2 A £5 donation to the RNLI for each infringement shall exonerate a competitor for failing to comply with an infringement of this sailing instruction.
- 20. Inspection**
- Boats must comply with current class regulations, inspections may take place.
- 21. [DP] Waste**
- Trash may be placed aboard support and race committee boats.
- 22. [DP] Radio Communication**
- A boat shall neither make radio transmissions while racing nor receive radio communications not available to all boats. This restriction also applies to mobiletelephones.
- 23. [DP] Support Boats**
- 23.1 Unless a boat is in danger, no other vessel associated with a boat or competitor shall enter the racing area from the time of the preparatory signal for the first start until all boats have finished or retired or the race committee signals a postponement, general recall or abandonment.
- 23.2 Except when helping a boat or competitor in danger, a support boat shall not:
- (a) Communicate with a competitor from the time of the preparatory signal for the first start of a race until the competitor boat has finished or retired or the race committee signals a postponement, general recall or abandonment.
 - (b) Come within 100 metres to leeward of the starting line during starts, within 50 metres of any course mark or of a boat that is racing, or within any other area designated by the race committee.
 - (c) Make excessive wash.
- 23.3 A registration process will be in place for all Support Boats. On registration Support Boats will be requested to declare their availability to support safety activities as directed by the `safety Officer, in the event of deteriorating circumstances.
- 23.4 At registration Support Boats shall provide contact details.
- 23.5 Support Boats shall carry a numbered flag, provided at registration or identification.
- 23.6 Support Boats shall have operating VHF radios and maintain a watch on the dedicated working channel in the event that they are called by the Safety Officer to assist in the event of an emergency.
- 23.7 Support boats shall comply with race committee safety instructions.
- 24. Prizes**
- Prizes shall be awarded in line with the notice of race
- 25. Risk Statement**
- 25.1 Rule 4 of the Racing Rules of Sailing states: "The responsibility for a boat's decision to participate in a race or to continue racing is hers alone." The organizing authority will not accept any liability or material damage or personal injury or death sustained in conjunction with or prior to, during, or after the regatta.

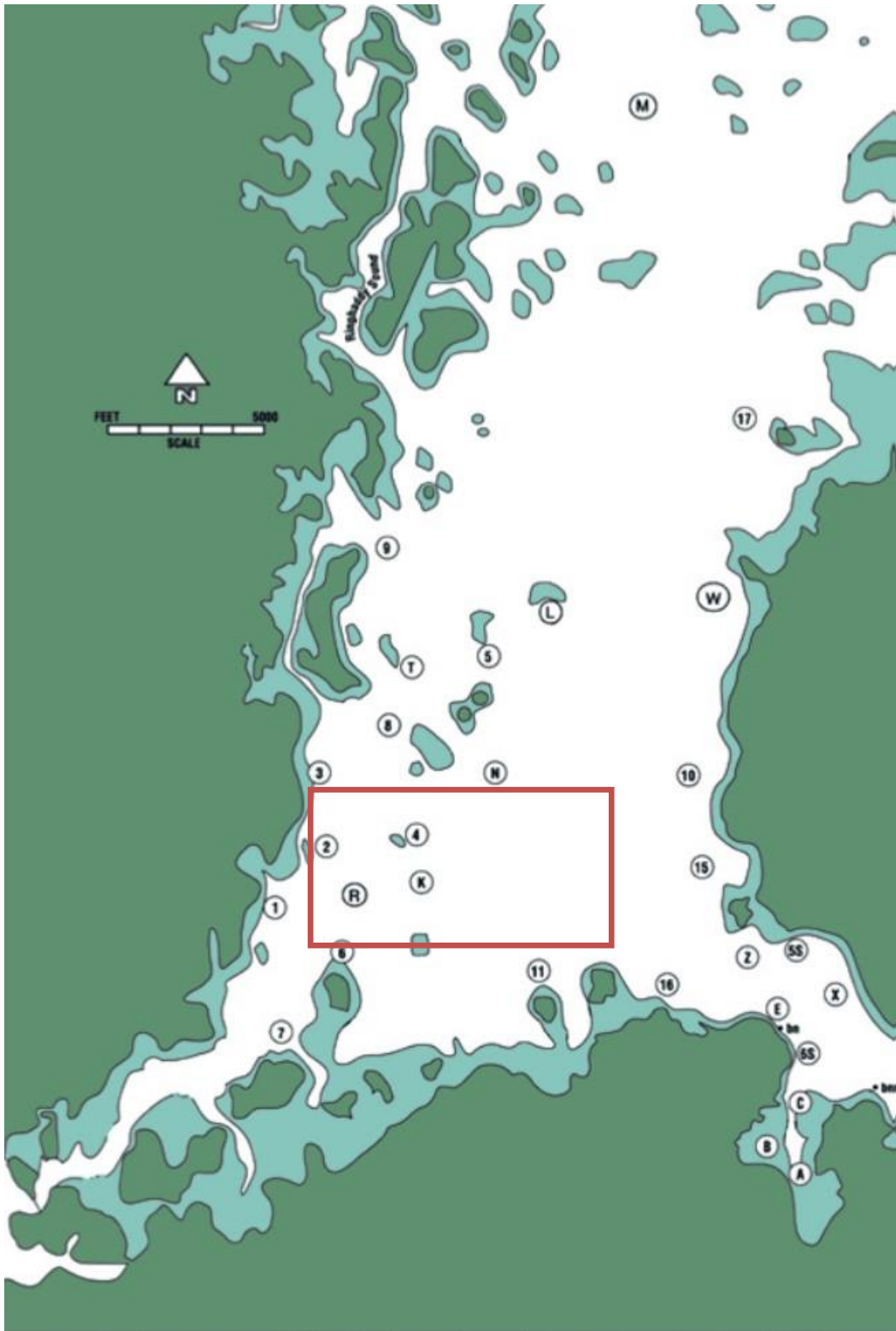
25.2 Sailing is by its nature an unpredictable sport and therefore inherently involves an element of risk. By taking part in the event, each competitor agrees and acknowledges that:

- (a) They are aware of the inherent element of risk involved in the sport and accept responsibility for the exposure of themselves, their crew and their boat to such inherent risk whilst taking part in the event;
- (b) They are responsible for the safety of themselves, their crew, their boat and their other property whether afloat or ashore;
- (c) They accept responsibility for any injury, damage or loss to the extent caused by their own actions or omissions;
- (d) Their boat is in good order, equipped to sail in the event and they are fit to participate;
- (e) The provision of a race management team, patrol boats and other officials and volunteers by the event organiser does not relieve them of their own responsibilities;
- (f) The provision of patrol boat cover is limited to such assistance, particularly in extreme weather conditions, as can be practically provided in the circumstances;

26. Insurance

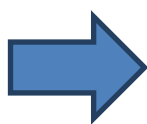
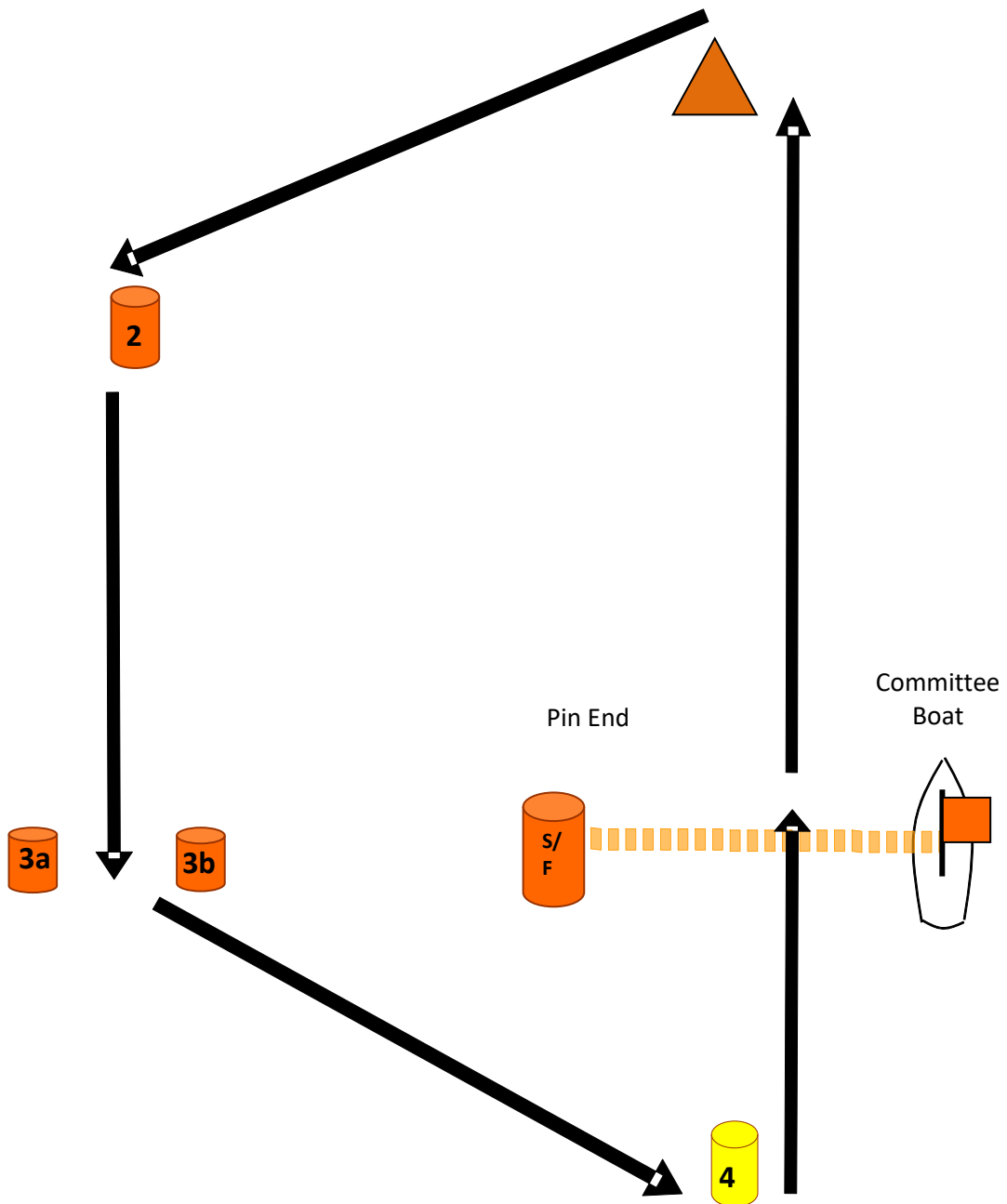
Each participating boat shall be insured with valid third-party liability insurance with a minimum cover of £2,000,000 per incident or the equivalent.

Appendix 1 RACE AREA



Appendix 2 Course Card

4.2m²Course

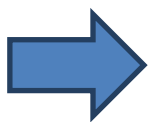
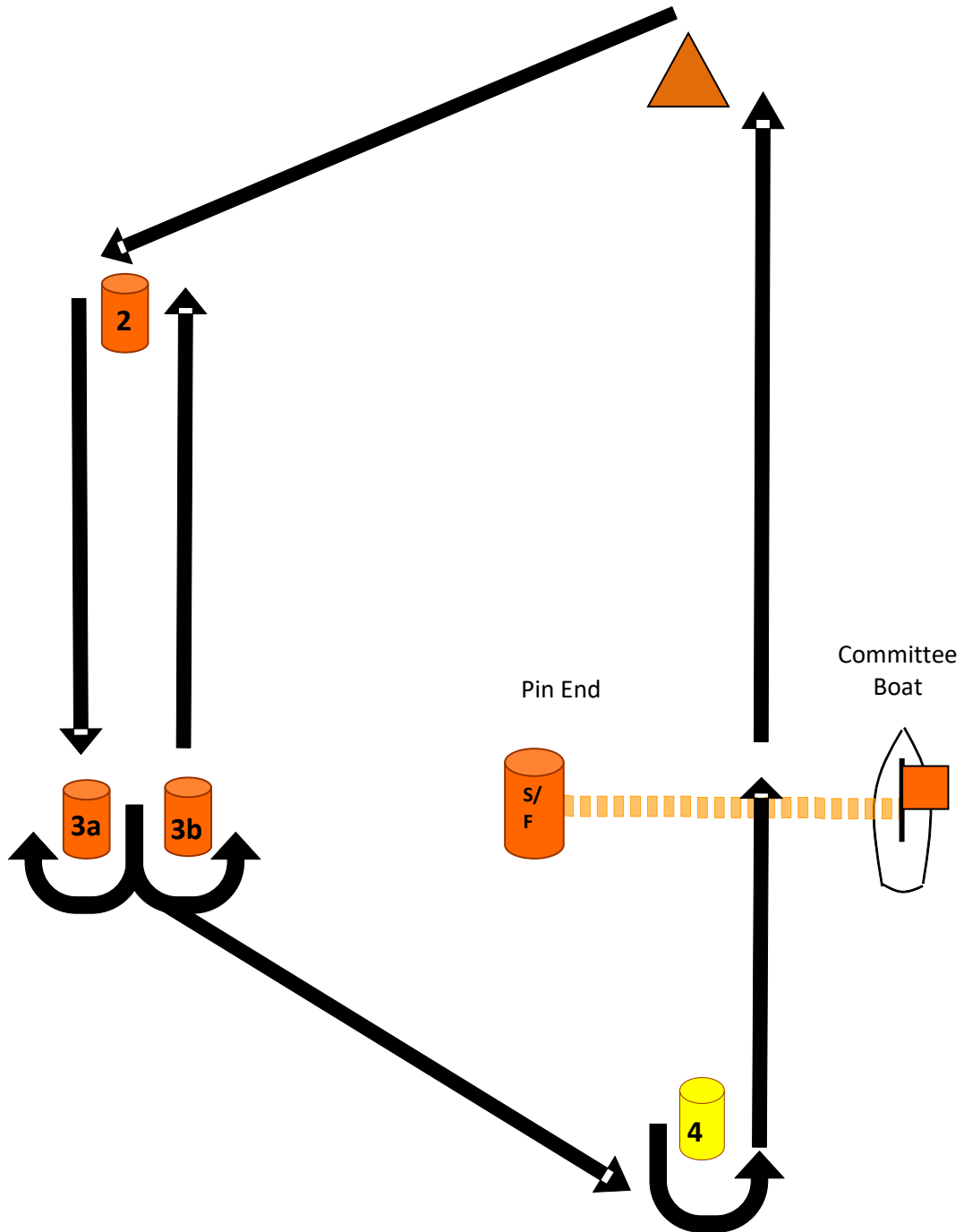


ITCA (IRL) - 4.2m²Course

1p - 2p - 3b(p) - 4p Finish

**Competitors SHALL pass through the gate leaving 3a to Starboard
If a gate mark is missing, competitors shall leave the remaining mark to port**

5.3m² Course



ITCA (IRL) - 5.3m²Course
1p - 2p – 3a(s) / 3 b(p) - 2p – 3b(p) – 4p Finish

If a gate mark is missing, competitors shall leave the remaining mark to port