

*We Invite You
to a Night
of Appreciation.*



*As One of
Our Most Generous
Supporters,*

*The pleasure of your company is requested for an evening of celebration and gratitude
at the 6th annual Champions for Children's Donor Appreciation Dinner.*

5:30 P.M.

COCKTAILS AND HORS D'OUVRES

6 P.M.

DINNER AND PROGRAM

Including Presentations
to the 2010 Children's Champions
Awards Recipients:

Mr. Stephen E. Myers

The Margaret Clark Morgan Foundation

The Friends of Akron Children's Hospital



COURTESY VALET PARKING AVAILABLE

COCKTAIL ATTIRE SUGGESTED

THURSDAY, MAY 26, 2011

Firestone Country Club, 452 East Warner Road, Akron, OH

FOR ADDITIONAL INFORMATION, CALL (330) 543-8340
OR EMAIL jdague@chmca.org.



eastward ho! hospital benefit golf tournament



2011 TOURNAMENT REGISTRATION



fri & sat schedule

Registration & Coffee
7:30 am

Shotgun Start
8:00 am

Buffet Lunch & Awards
12:15 pm

join us for the

23rd eastward ho! hospital benefit golf tournament

friday, june 17th and saturday, june 18th

enjoy one or two days of tournament play while supporting cape cod hospital

For 23 years, Eastward Ho! has proudly made a difference in the community by bringing friends and neighbors together to support **Cape Cod Hospital** and **Cape Cod Healthcare**. With your participation this year, we will continue to make a difference.

register now

\$150 for Eastward Ho! members, \$175 for non-members. Two best balls per foursome. Lunch included. Awards and prizes.

become a tournament sponsor

Sponsorship opportunities are still available. For more information on how you or your company can sponsor this year's benefit golf tournament, please contact Deanne Maraj at 508-862-5606.

tournament registration

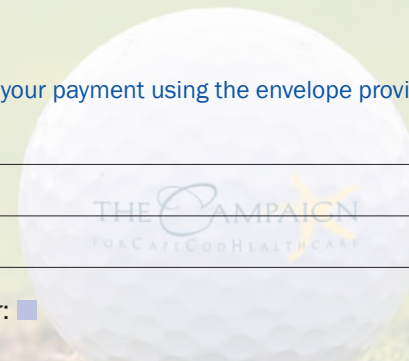
To register, please fill out the information below and on the reverse side. Once complete, mail it with your payment using the envelope provided.

1 golfer 1: _____
address: _____
phone: _____
email: _____
primary contact: ☐ eastward ho! member: ☐

2 golfer 2: _____
phone: _____
email: _____
eastward ho! member: ☐

3 golfer 3: _____
phone: _____
email: _____
eastward ho! member: ☐

4 golfer 4: _____
phone: _____
email: _____
eastward ho! member: ☐



for more information visit cchospitalgolf@eastwardho.net

tournament participation

① Select preferred day of play.

☐ friday, june 17th ☐ saturday, june 18th

② Indicate number of golfers (cost per player includes lunch).

Eastward Ho! Members: ① \$150 ② \$300 ③ \$450 ④ \$600

Non-Members: ① \$175 ② \$350 ③ \$525 ④ \$700

③ Total amount. \$ _____



325 fox hill road
chatham, ma 02633
(508) 945-0003
golf shop: (508) 945-0620
cchospitalgolf@eastwardho.net

payment information

☐ eastward ho! member # _____

☐ check enclosed (please make payable to **eastward ho! hospital benefit**)

☐ credit card transaction

☐ mastercard

☐ visa

☐ amex

exp.date:

--	--	--	--

account:

--	--	--	--	--	--	--	--	--	--	--	--	--	--	--

card holder: _____

PLEASE PRINT

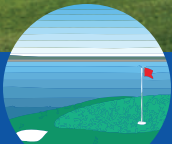


CAPE COD HEALTHCARE

11.029(B) CCHCFND

A wide-angle photograph of a golf course under a clear blue sky. In the foreground, a lush green fairway slopes gently. In the middle ground, a clubhouse with a white facade and a dark roof sits on a grassy hill, with an American flag flying from a pole. To the left of the clubhouse, a body of water is visible, with several sailboats docked at a pier. The background shows a line of trees and distant hills.

**it's not as far away
as you think**



Hole #18 at Eastward Ho! Country Club

Join us this June for the 23rd Annual Eastward Ho! Hospital Benefit Golf Tournament

**Friday, June 17, 2011 &
Saturday, June 18, 2011**

**This is your opportunity to support
Cape Cod Hospital while enjoying
one or two days of tournament play
at Eastward Ho! Country Club.**



**Mark your calendar! The 2011
Tournament Registration will be
available soon. For questions
please call Deanne Maraj at
508.862.5606.**

EASTWARD HO! COUNTRY CLUB
325 FOX HILL ROAD, CHATHAM, MA 02633

Celebrity Summer Auction & Dinner

You are cordially invited
to attend the 2011
Celebrity Summer Auction
and Dinner to benefit the
**Lyndon P. Lorusso Emergency Center
at Cape Cod Hospital**

It's An Emergency

Thursday, August 11, 2011

5:30 pm

The Wianno Club
Seaview Avenue, Osterville

Cocktail reception and silent auction
begin at 5:30 pm followed by dinner and
live auction starring celebrity auctioneers

Leigh and Leslie Keno

from the PBS's Emmy® Award-nominated
ANTIQUES ROADSHOW

Reply by August 5th

\$200 per person

It's An Emergency **EventCommittee**

Nancy Alger
Fran Birmingham
Nancy Clough
Michelle Cotton
Jane Davenport
Michelle Fairbanks
Marcia Floyd
Cody Jones
Diana Lemont
Deanne Maraj
Lee McGraw
Marjorie McGraw
Carol Marsh
Susan Mullin
Ann Rascati
Kay Rockwood

Tables of ten can be reserved in advance.

For more information please contact
Deanne Maraj from the CCHC Foundation
at 508.862.5606.



TO BENEFIT
CAPE COD HOSPITAL

CelebritySummerAuction&Dinner

It's An Emergency

Please respond by August 5th

\$200 per person | \$400 per couple

M/M _____

☐ **WILL ATTEND**

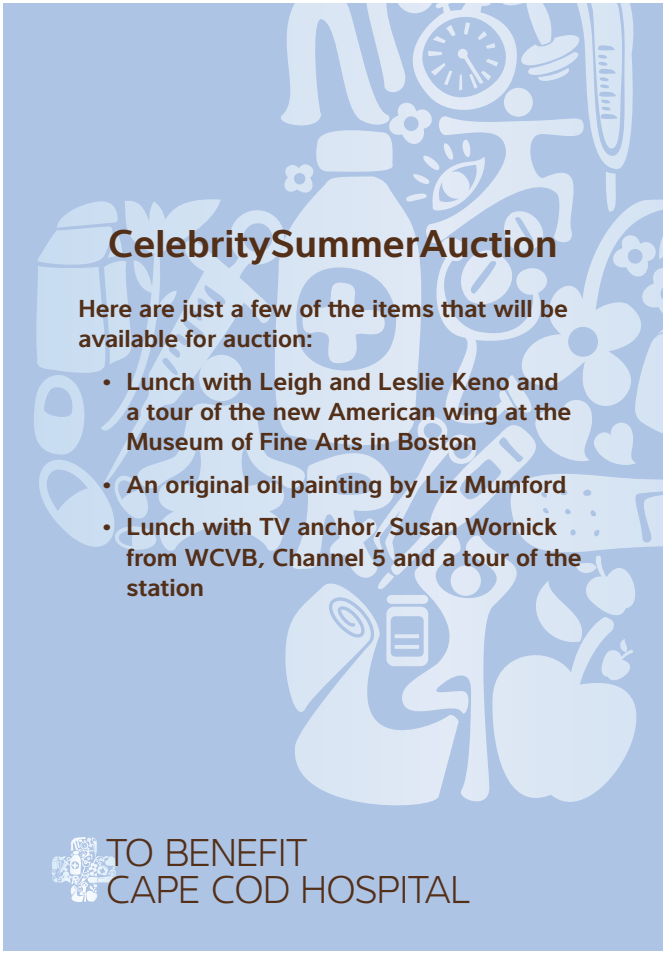
☐ **UNABLE TO ATTEND**

☐ **UNABLE TO ATTEND
BUT WOULD LIKE TO CONTRIBUTE:**

\$ _____

If you are interested in reserving a table of ten,
contact Deanne Maraj at 508.862.5606.

Please make your check payable to ***It's An Emergency.***



CelebritySummerAuction

Here are just a few of the items that will be available for auction:

- Lunch with Leigh and Leslie Keno and a tour of the new American wing at the Museum of Fine Arts in Boston
- An original oil painting by Liz Mumford
- Lunch with TV anchor, Susan Wornick from WCVB, Channel 5 and a tour of the station



TO BENEFIT
CAPE COD HOSPITAL

te

mmer Auction



For **IT'S AN EMERGENCY** Date **8/11/11**
Address **The Wianno Club, Osterville**
R
"It's an Emergency" Celebrity Summer Auction
and Dinner Event supporting the expansion and
renovation of the Lyndon P. Lorusso
Emergency Center at Cape Cod Hospital
THURSDAY, AUGUST 11, 2011
AT THE WIANNO CLUB
Cocktail reception begins at 5:30 pm followed
by Dinner and Live Auction starring celebrity
auctioneers
LEIGH & LESLIE KENO
FROM ANTIQUES ROADSHOW
SUBSTITUTION PERMITTED
LL _____ TIMES _____
DISPENSE AS WRITTEN
DEA No. _____
MO _____

M. McGraw
Sea View Avenue
Osterville, MA 02655



You are cordially invited to attend the annual
Eastward Ho! Hospital Benefit Dinner and Auction
to support Cape Cod Hospital

An Evening of Giving

Thursday, August, 18, 2011

6:00 pm

Wequassett Resort and Golf Club
On Pleasant Bay, Chatham

Kindly respond by August 12th

\$150 per person

Featured Auction Items

- Five nights and six days in a Boca Grande luxurious condo, including two rounds of golf for four and two dinners for four with cocktails and wine;
- Three nights at the Federica guest house in Sea Island, Georgia, includes airfare for 4, rental car, and 3 rounds of golf;
- A private gourmet dinner in your own home prepared and served by Eastward Ho! Executive Chef, Alain Di Tommaso and Club Manager, John Dufault
- Three night package at the Rosedon, Bermuda



2011 EVENT TO BENEFIT
CAPE COD HEALTHCARE



An Evening of Giving

PLEASE RESPOND BY AUGUST 12TH

M/M _____

- ☐ Will attend.
- ☐ Unable to attend.

or

- ☐ Unable to attend but would like to support Cape Cod Hospital with a gift of \$ _____ .

Payment information on reverse.

Ticket Information

TOTAL AMOUNT: \$ _____
\$150 per ticket, \$300 per couple, or donation amount.

☐ CHECK ENCLOSED
Please make payable to Eastward Ho! Hospital Benefit

☐ EASTWARD HO! CLUB ACCOUNT: #

☐ CREDIT CARD TRANSACTION: ☐ MASTERCARD
☐ VISA
☐ AMEX

ACCOUNT

--	--	--	--	--	--	--	--	--	--	--	--	--	--	--	--	--	--

EXP. DATE

--	--	--	--

CARDHOLDER NAME

ADDRESS

CITY

STATE

ZIP

SIGNATURE

Have a love affair with San Francisco's finest restaurants!

Chinese Hospital 3rd Annual Spring Fling



Sponsors:



Chinese
Community
Health
Plan

CCHP



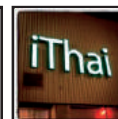
WE LOGISTICS



Partners:



COLOSSEO
Ristorante & Bar Italiano



pasión
MODERN LATIN CUISINE



CONTACT: JULIA LING PHONE: 415.677.2470 E-MAIL: JULIAL@CHASF.ORG WWW.CHINESEHOSPITAL-SF.ORG



CHINESE HOSPITAL

celebrates serving the community for over 100 years
from its founding in 1899 to the present, the hospital
has been devoted to providing access to
culturally sensitive and quality health
care to the residents of san francisco
and its neighboring cities.



You are cordially invited to the
3rd ANNUAL SPRING FLING
to support Chinese Hospital

Friday, May 25, 2012 / 5:30 - 8:30PM /
Bently Reserve: 400 Sansome Street, San Francisco, CA 94111

An unforgettable evening of:

- International Cuisine Food Tasting
- Complimentary Wine
- Live Entertainment & Great Music
- Raffle Drawing

**70's Disco Theme, Please Come Dressed to Impress in Your Best 70's Style!"*



Then: 18 Separate Specialties.



Outpatient Surgery
and Radiology



Orthopedics



Infectious Disease



Nephrology
& Dialysis



Pulmonary



Endocrinology



Gastroenterology



Pediatric Surgery



Heart Center



Cardio Thoracic Surgery



Neurosciences



Neurosurgery



Pain Management



Craniofacial
and Cleft Surgery



Palliative Care



Rheumatology



Hematology &
Oncology



Multi-Specialty

Now: All together in one special place.



*You're invited to the grand opening of the
DODSON SPECIALTY CLINICS & CANCER CENTER
Thursday, February 2, 2012
Cook Children's Medical Center
Dodson Specialty Clinics Building*

*10 a.m. – Ribbon Cutting
10:30 a.m. – Cancer Center Showcase and Tours*

*Complimentary Valet Parking on Cooper Street
(at the Dodson Specialty Clinics Building)*



Please RSVP by January 20 to Julie.Barfield@cookchildrens.org or 682-885-4833.

Celebrate
the many colorful
facets of your
generosity

5:30 p.m.
Cocktail Reception

6 p.m.
Jewel Charity Gift Celebration

02.07.12

Cook Children's Medical Center

Hochberger Auditorium
801 Seventh Avenue
Fort Worth, TX 76102

Please reply by Monday, January 30, 2012
Business attire
Complimentary valet parking
Main entrance

benefiting

CookChildren's





Name _____

Spouse/guest _____

☐ I/we will attend ☐ I/we regret to decline

The courtesy of a response is
requested by **January 30, 2012.**

For questions, contact Dee Webb at
817-870-9064, ext. 5 or
dee.webb@cookchildrens.org.

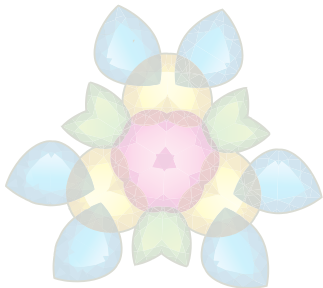
Jewel Charity

P.O. Box 472149
Fort Worth, TX 76147

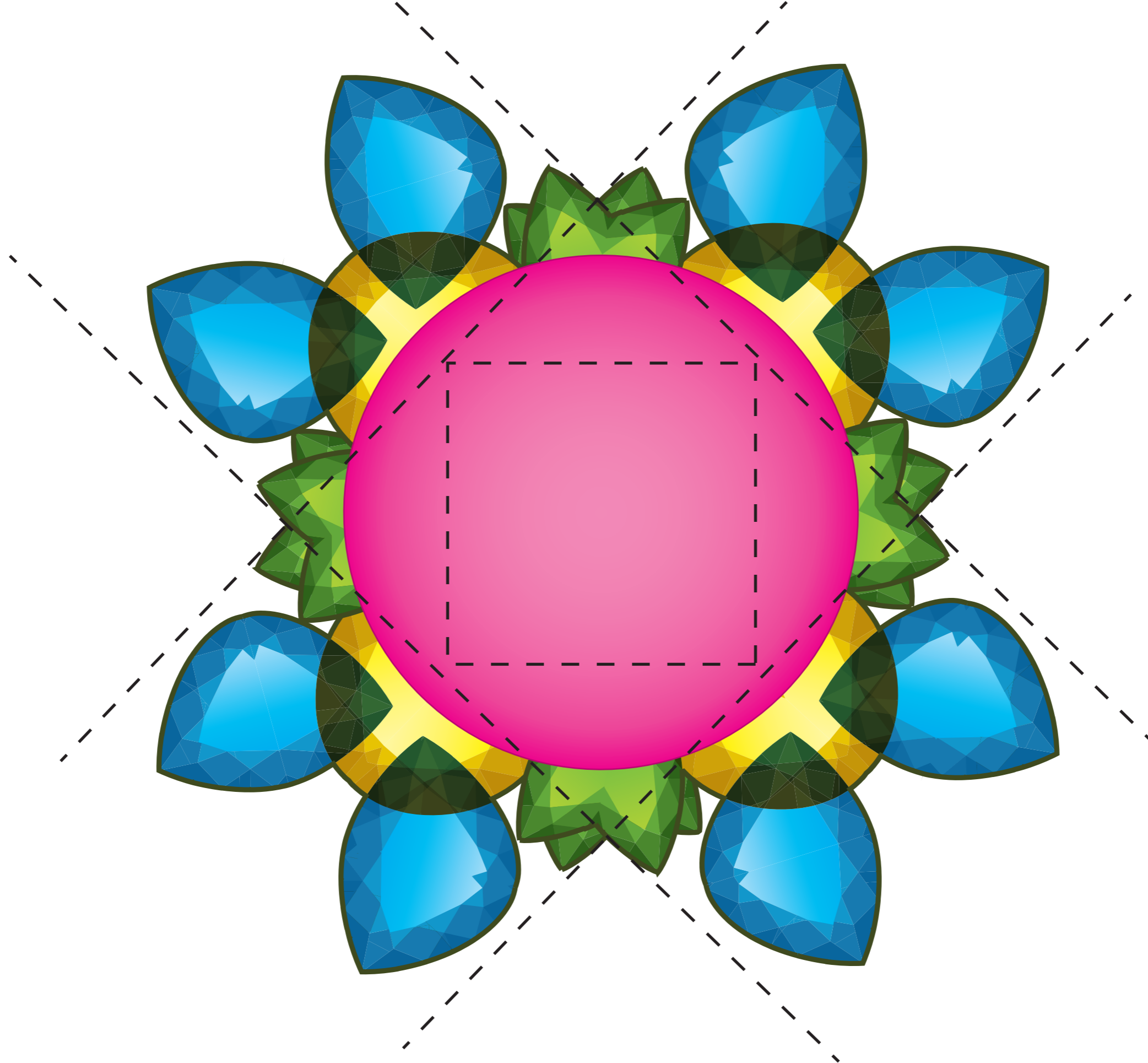
A kaleidoscope of giving



Jewel Charity
P.O. Box 472149
Fort Worth, TX 76147



A **kaleidoscope** of giving





Celebrating a
kaleidoscope
of giving

CookChildren's.

801 Seventh Ave.
Fort Worth, TX 76104

SAVE THE DATE
to celebrate
the many colorful
facets of your
generosity

5:30 p.m.

02.07.12

Cook Children's Medical Center
Formal invitation to follow



benefitting

CookChildren's

20 Pine Mill Road • Browns Mills • NJ • 08015
(800) 388-0380 • www.deborahfoundation.org

DEBORAH® Hospital Foundation

*♥ And Special Friends of Deborah
♥ 21st Century Society ♥ President's Club
♥ Heritage Circle ♥ Life-Income Benefactors*
Luncheons Honoring Our

**DEBORAH® Hospital Foundation
Invites You to Our**

Winter Gathering of Florida Friends

Share in our accomplishments and achievements of 2011 while learning
of the new programs and plans for Deborah Heart and Lung Center.

*Please join us at one of the following locations
as we celebrate and recognize the commitment
and generosity of those who support us.*

We encourage you to bring a guest to the luncheon

West Coast

Wednesday, Feb. 1, 2012

The Venice Yacht Club

1330 Tarpon Center Dr., Venice

East Coast

Thursday, Feb. 2, 2012

Boca Country Club

17751 Boca Club Blvd., Boca Raton

Please join us at 11:30am for appetizers

*Please RSVP with your entree selection by January 23, 2012
by calling Nancy or Jim
(800) 388-0380*



the FUTURE
is NOW

EVMS

Eastern Virginia Medical School

Teaching. Discovering. Caring.™

9.22.2011



You're INVITED

The FUTURE of health-care education
& research has arrived. Join us for the
RIBBON CUTTING CEREMONY
for our new education & research building.



TIME: 6:00 P.M.
EVENT + RECEPTION

LOCATION: 651 COLLEY AVENUE
COMPLIMENTARY PARKING IN VISITOR GARAGE

RSVP BY 09.15.2011

757.446.6070 [PHONE]

WWW.EVMS.EDU/FUTURE [ONLINE]

GUESTS WELCOME. BUSINESS ATTIRE.

COMMUNITY FOCUS. WORLD IMPACT.



EVMS
Eastern Virginia Medical School



FRED HUTCHINSON
CANCER RESEARCH CENTER

SCIENCE SPECTRUM BELLEVUE

Hear behind-the-scenes stories of discovery

Learn about pioneering treatments

Enjoy small group discussions with dynamic researchers

Envision a more hopeful future for all who are
touched by cancer and related diseases

Wine and hors d'oeuvres

Thursday, February 9, 2012

6:00 pm Reception

6:30 pm Program

The Westin Bellevue
Bellevue, Washington

RSVP

By February 1 to 206.667.3402
or events@fhcrc.org

THE SCIENTISTS

LARRY COREY, M.D.

Hutchinson Center President and Director

President and director of the Hutchinson Center, Dr. Corey is also an internationally renowned expert in virology, immunology and infectious diseases and the leader of the world's largest clinical trials program devoted to producing a vaccine against HIV.

KEITH JEROME, M.D., PH.D.

A cure for AIDS?

An expert in viral infections, Dr. Jerome is part of a Center collaboration investigating targeted gene repair. This new technique for genetic "surgery" could lead to cures for certain genetic disorders, such as cystic fibrosis, as well as infectious diseases like AIDS.

SOHEIL MESHINCHI, M.D., PH.D.

New ways to fight blood cancers

A pediatric oncologist, Dr. Meshinchi studies the genetic mutations that give rise to a common form of leukemia in order to develop new, targeted treatments for patients with the disease.

SCOTT RAMSEY, M.D., PH.D.

Uniting health care and business acumen

A leading health economist, physician and researcher, Dr. Ramsey addresses the financing and delivery of cancer care with a goal of reducing disparities in care, increasing efficiencies, expediting research and containing costs.

DIRECTIONS

THE WESTIN BELLEVUE

Lake Washington Ballroom, 3rd floor
600 Bellevue Way NE, Bellevue, Washington

From Interstate 5

- Merge onto State Route 520 east
- Proceed on SR 520 east for 5 miles to the Bellevue Way exit
- Exit at Bellevue Way and continue straight (south) for 1.8 miles
- The hotel will be on your left


From Interstate 405 (Southbound)

- Exit at NE 8th Street east/west exit (13B)
- Take the NE 8th Street west ramp
- Merge onto NE 8th Street
- Turn left onto Bellevue Way NE
- The hotel will be on your left

Parking

- Validated parking available at the self service Lincoln Square / Westin Bellevue Garage on levels P4 and P5 (three hours)
- Valet parking is available at the hotel for \$7.00 (three hours)
- Additional free parking is available at Bellevue Square Parking Garage

Please note: if you have mobility considerations, please let us know in advance by calling 206.667.3402



www.fhcrc.org

Please join us for our 20th anniversary culinary adventure benefitting vital research at Fred Hutchinson Cancer Research Center.

premier chefs dinner

Sodo Park by Herban Feast

5 p.m. – VIP Reception

5:30 p.m. – Reception

6:30 p.m. – Dinner

\$250 guest ticket

\$350 VIP ticket

VIP ticket includes meet and greet with,
and specialty appetizer prepared by,
Chef and Molecular Gastronomist

Grant Achatz

Please respond by Friday, April 29, 2011.

Cocktail attire

Hosted by the Premier Chefs Dinner
Advisory Board and the Magnolia Guild

www.fhcrc.org/chefs chefs@fhcrc.org 206.667.5492

FRED HUTCHINSON
CANCER RESEARCH CENTER

Featuring

Chef and Molecular Gastronomist Grant Achatz, Alinea

Grant Achatz is an American chef and restaurateur who is considered to be on the cutting-edge of the movement of menu item construction often referred to as molecular gastronomy or progressive cuisine. Achatz has won numerous awards from prominent culinary institutions and publications including the 2003 “Rising Star Chef of the Year Award,” 2008 “Best Chef in the United States” from the James Beard Foundation and 2011 Michelin Guide three-star rating.

In the kitchen

A unique five course menu will be prepared for the evening by some of our finest local chefs, including:

Kevin Davis, *Steelhead Diner* and *Blueacre Seafood*

Jason Franey, *Canlis*

Daisley Gordon, *Campagne*

Christine Keff, *Flying Fish*

Brian McCracken and Dana Tough, *Spur Gastropub*
and *Tavern Law*

Scott Staples, *Zoë*

Jonathan Sundstrom, *Lark*

Hors d'oeuvres

Dalis Chea, *Herban Feast*

Scott Staples, *Quinn's*

Jerry Traunfeld, *Poppy*

Off the vine

We are delighted to feature exquisite wines from Northwest wineries, including:

Brian Carter Cellars

Corliss Estates

EFESTÉ Winery

L'Ecole N° 41

Selvatica

Smasne Cellars

SUBSTANCE



Meet the Researchers * Tour the Labs * See the Science

TOPIC:

Going to the source: The pliability of stem cells

DETAILS:

Wednesday, April 25, 2012

5 to 7 pm

Lab tour begins at 5:15 pm

LOCATION:

Sze Conference Room, Thomas Building

Fred Hutchinson Cancer Research Center

RSVP:

By April 18, 2012

to 206.667.3402 or events@fhcrc.org

HIGHLIGHTS:

Turning science into story, our featured researchers will explain the many kinds of stem cells that exist and the therapeutic promises they offer.

You will be treated to a behind-the-scenes tour of their laboratories with plenty of time for questions and discussion.

The next generation of cancer care is being charted now — join us in this unique opportunity to hear from the charismatic researchers moving us toward easier answers for patients facing cancer and related diseases.

SCIENTISTS:

DR. SOHEIL MESHINCHI, a pediatric oncologist, studies the genetic mutations that give rise to a common form of leukemia in order to develop new, targeted treatments for patients with the disease. His work centers on cancer stem cells, the formative cells that give rise to mature tumor cells.

DR. ARAVIND RAMAKRISHNAN is an oncologist specializing in blood-based disorders and bone marrow transplants. In the lab, he studies the ways in which the flexibility of human stem cells can be tapped to create new disease-fighting therapies.

DIRECTIONS AND PARKING

#3

FRED HUTCHINSON CANCER RESEARCH CENTER

1100 Fairview Avenue North, Seattle, Washington 98109
Sze Conference Room, Thomas Building

FROM INTERSTATE 5 - NORTH OR SOUTH

Exit Mercer Street (Exit 167) and move to far right lane
Turn right at light at bottom of exit ramp; stay in far right lane
Turn right at light onto Fairview Avenue North
Turn right onto Aloha Street (just past Marriott Residence Inn)
Continue past roundabout to parking lot on left (see map below)

PARKING

The Thomas Building is building “D” on the map below. Please park in the lot off Aloha Street and take the stairs (see * on map below) down to the Thomas Building. Enter through the glass doors and check in at the registration table just past the reception desk. If you have special parking needs, please coordinate in advance by calling 206.667.3402.



SCIENCE
OVER
LUNCH





SCIENCE OVER LUNCH

Please join us

Enjoy a casual, informative discussion of the most recent research being conducted at Fred Hutchinson Cancer Research Center.

Thursday, February 9, 2012

11:30 am to 1:00 pm

**Size Conference Room,
Thomas Building**

Fred Hutchinson Cancer Research Center

Featuring

Dr. Kyle MacQuarrie

Graduate student, M.D./Ph.D. Program

Fred Hutchinson Cancer Research Center

University of Washington

Kindly reply to

Rainee Johnson by February 2

at 206.667.3402 or events@fhcrc.org

**FRED HUTCHINSON
CANCER RESEARCH CENTER**

A LIFE OF SCIENCE



SCIENCE OVER LUNCH

Kyle MacQuarrie

- Graduate student, M.D./Ph.D. Program
Fred Hutchinson Cancer Research Center
University of Washington

Scientific background

- Having just completed his Ph.D. thesis, Dr. MacQuarrie is currently continuing his laboratory research at the Hutchinson Center
- In the fall he will begin his next round of medical training at the University of Washington

Research focus

- Thanks to his dual training in both the science of human development and pediatric oncology, Dr. MacQuarrie has special insight into the hopeful future of children's cancer care.
- In particular, he studies skeletal muscle at the molecular level with the goal of better understanding rhabdomyosarcoma, a difficult-to-treat pediatric cancer affecting the muscles that attach to bones.
- He is helping to describe the link between childhood tumors and flaws in genes that govern development, with the hope of finding novel treatment possibilities.



Directions and Parking

FRED HUTCHINSON CANCER RESEARCH CENTER

Sze Conference Room, Thomas Building

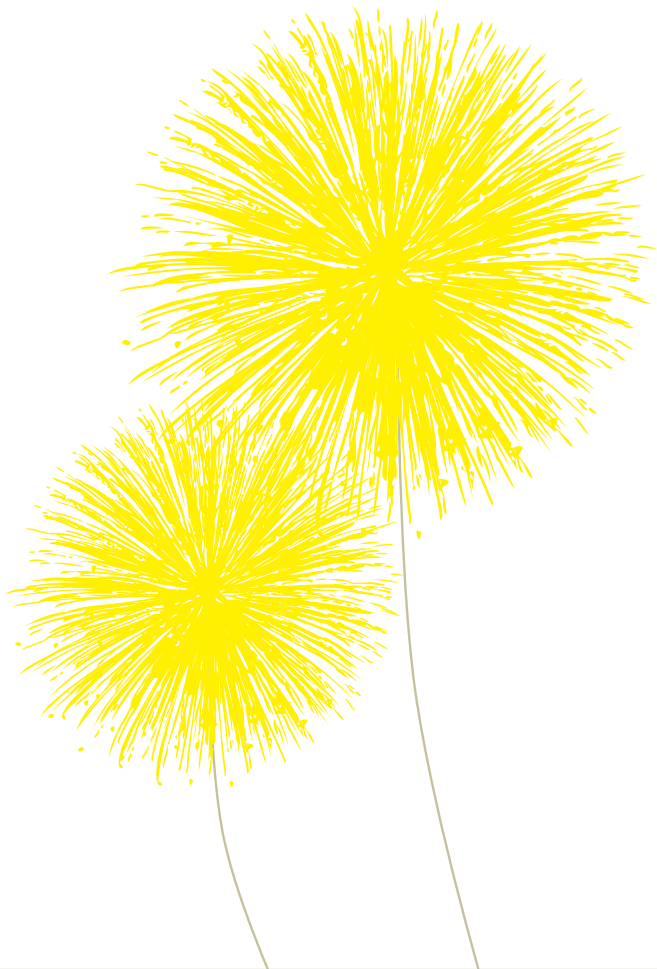
1100 Fairview Avenue North, Seattle, WA 98109

Directions from I-5 (north or south)

- Exit Seattle Center/Mercer St.; move to far right lane
- Turn right at light at bottom of exit ramp; stay in far right lane
- Turn right at light onto Fairview Ave. North
- Continue past Marriott Residence Inn and through the light
- Turn right at Campus Dr.
- Continue past the roundabout to visitor parking

Parking

- Please park in visitor parking located in front of the Thomas building (building "D" on the above map). Note your license plate number.
- Enter through the glass doors and check in at the reception desk by logging your name and license plate number.
- The Sze conference room is located just past the reception desk on your right-hand side.



FRED HUTCHINSON CANCER RESEARCH CENTER
INVITES YOU, MEMBERS OF OUR NOBEL LAUREATES CIRCLE,
TO A SPECIAL DINNER IN YOUR HONOR

NOBEL LAUREATES CIRCLE DINNER JULY 27, 2011. 6-9 PM

WITH DR. LARRY COREY, HUTCHINSON CENTER PRESIDENT AND DIRECTOR
AND OTHER ESTEEMED CENTER SCIENTISTS

OBSERVATION DECK, ROBERT M. ARNOLD BUILDING
FRED HUTCHINSON CANCER RESEARCH CENTER
1100 FAIRVIEW AVENUE NORTH, SEATTLE, WA 98109

RSVP BY JULY 13, 2011 TO RAINEE JOHNSON
206.667.3402 OR EVENTS@FHCRC.ORG

FRED HUTCHINSON
CANCER RESEARCH CENTER