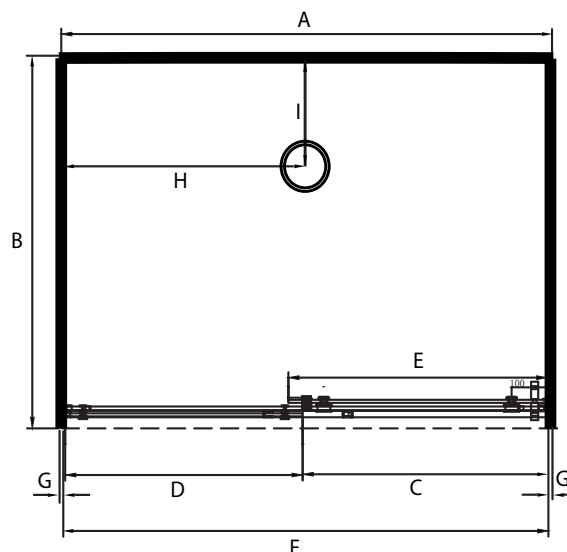


STELLAR BLACK EDITION ALCOVE SHOWERS



Pictured - Stellar Luxury BLACK EDITION 1x12x1 Alcove FFlat Wall
RH Fixed Door Opening **SKU 318638**

DESCRIPTION

The Stellar BLACK EDITION Range of Alcove Showers can be purchased as a complete Shower Cubicle including Acrylic Tray, Wall Liner and Door pack.

The door pack can also be purchased as an individual item for installation on a tiled floor and wall installation.

SEE TILE SHOWER LAYOUT FOR SETOUT DIMENSIONS

The door is reversible - and closes to the finished wall.

FEATURES

- Matt Black Extrusions and Hardware
- Low profile 60mm tray with 40mm upstand
- 2000mm high glass 8mm Safety Glass
- Total OVERALL height 2060mm
- Door Closes to Finished wall
- Minimalistic extrusion allows adjustment to wall and floor
- No Silicone Joints required for Glass

LEGEND

Dimension	Description	Shower Size			
		1200x800	1200x900	1200x1000	1400x1000
A	Tray Width External Dimension	1200mm	1200mm	1200mm	1200mm
B	Tray Depth External Dimension	800mm	900mm	1000mm	1000mm
C	Door Opening Dimension +/- 10mm	580mm	580mm	580mm	680mm
D	Return Panel Dimension	570mm	570mm	570mm	670mm
E	Door Panel Dimension	630mm	630mm	630mm	730mm
F	Dimension between Wall Liner inner faces	1175mm	1175mm	1175mm	1275mm
G	Gib Board Liner Thickness +/-1.5mm	12.5mm	12.5mm	12.5mm	12.5mm

ORDERING CODES

Product Description	SKU CODE			
	1200 x 800	1200 x 900	1200 x 1000	1400 x 1000
Complete Cubicle Silva Flat Wall Left Hand Opening Door	318641	318643	318637	318639
Complete Cubicle Silva Flat Wall Right Hand Opening Door	318642	318644	318638	318640
Tray Only Centre Rear Waste	TFS8x12x8ALCRCW	TFS9x12x9ALCRCW	TFS1x12x1ALCRCW	TFS1x14x1ALCRCW
Liner Only Flat Wall 2000mm High 3 sided White	LB8X12X8FW3S2M	LB9X12X9FW3S2M	LB1X12X1FW3S2M	LB1X14X1ALCRCW
Door / Return Pack 2000MM High BLACK Left Hand Opening Door	D1200BLLH2M	D1200BLLH2M	D1200BLLH2M	D1400BLLH2M
Door / Return Pack 2000MM High BLACK Right Hand Opening Door	D1200BLRH2M	D1200BLRH2M	D1200BLRH2M	D1400BLRH2M

WARRANTY INFORMATION

All bathroom ware products supplied by Nouera Shower systems carry our Quality Assurance and Product Warranty. We use the highest quality materials available and manufacture these in accordance with New Zealand specifications and requirements to ensure that all products are fit for the intended purpose for which they are designed. Our customers Peace of Mind is of paramount importance to us.

Warranty Periods

Baths	10 years
Showers	10 years
Black Coated Framework	5 years

Warranty Exclusions

The product must be installed according to the instructions supplied.
The water supply temperature applied to the product must not exceed 55 degrees Celsius.
Commercial Applications are restricted to a 2 year warranty on all products."

CLEANING AND MAINTENANCE

Bathroom products are used often and the following is our suggestion on how to clean and care for them.

Shower Wall

We use Durosan premium quality sanitaryware grade Acrylic. It is, by design very robust and chemical resistant. A soft damp cloth with non abrasive cleaners should be used. Use only non abrasive cleaners that are recommended for Acrylic products.

Shower Tray and Bath

We manufacture our Shower Trays and Baths using a Solid Acrylic Surface. Most other shower trays are manufactured using a veneer Acrylic surface. The great advantage is that small scratches can be removed easily by using fine cutting compound. Again the same basic cleaning methods as the wall are recommended.

Shower Doors and Glass

All glass is compliant to AS/NZS 2208. We suggest that the glass surfaces are wiped down or Squeegeed following use to remove excess water. For best results use a trusted glass cleaner.

Metal framework

Should be cleaned using a soft damp cloth with non abrasive cleaner. Note that on round Showers, the bottom rollers are easy release for ease of cleaning. If chemical spray cleaners are used, avoid direct contact with the rollers and guides and ensure the shower is rinsed off to avoid residue build up.

Weather seals and drip strips

Can be removed if required for cleaning, and can be replaced when they no longer look their best Refer to our spare parts and accessories section of this website for more details.

Note - If the Glass has been treated follow specific cleaning instructions from the system provider.