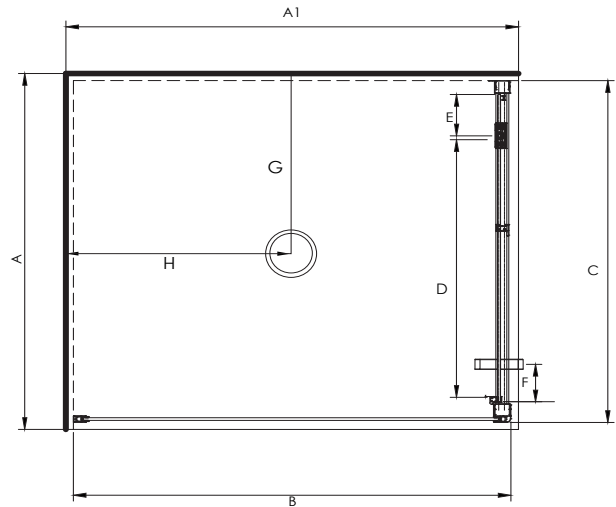


# STELLAR 9x760 PIVOT DOOR SHOWERS



Pictured - Stellar Aquarius 9x760mm LH Silva Door Flat Wall

SKU 248531



## DESCRIPTION

The Stellar Rectangular Range of Pivot Door Showers can be purchased as a complete Shower Cubicle including Acrylic Tray, Wall Liner and Door pack.

The door pack can also be purchased as an individual item for installation on a tiled floor and wall installation.

SEE TILE SHOWER LAYOUT FOR SETOUT DIMENSIONS

The door opening direction is reversible

## FEATURES

- SILVA or White Extrusions
- Low profile 60mm tray with 40mm upstand
- 1950mm high 6mm Thick Safety Glass
- Total OVERALL height 2020mm
- Door Opening Direction can be swapped from LH to RH
- Extrusions allow for adjustment to wall and floor
- High Quality Hardware
- Door can be ordered on 760mm side as an optional extra (surcharge applies).

## LEGEND

Dimension	Description	Aquarius Shower Size	
		900 x 760 760 Door	900 x 760 900 Door
A	Tray External Width Dimension	760mm	760mm
A1	Tray External Length Dimension	900mm	900mm
B	Return Panel Dimension	870mm	730mm
C	Door Frame Dimension	730mm	870mm
D	Door Opening Dimension	550mm	640mm
E	Centre of Pivot Block to Inside of Frame	88mm	138mm
F	Centre of Handle to Edge of Door	80mm	80mm
G	Waste position	380mm	380mm
H	Waste position	450mm	450mm

## ORDERING CODES

Product	SKU CODE			
	900x760mm LH 900mm Door	900x760mm RH 900mm Door	900x760 LH 760mm Door	900 x 760mm 760mm Door
Rectangular 2 sided Flat Wall White Pivot Door	248527	248534	248527 *	248534 *
Rectangular 2 sided Flat Wall SILVA Pivot Door	248531	248528	248531 *	248528 *
Rectangular 2 sided Moulded (900 side)Back Wall White Pivot Door	248529	248532	248529 *	248532 *
Rectangular 2 sided Moulded (900 side)Back Wall SILVA Pivot Door	248533	248530	248533 *	248530 *
Flat Tray Only	TF59x7LHCW	TF59x7RHCW	TF59x7LHCW	TF59x7RHCW
Flat 2 sided Wall Liner Only White 1950mm high	LB9x7FW2S195	LB9x7FW2S195	LB9x7FW2S195	LB9x7FW2S195
Moulded 2 sided Back Wall / Wall Liner Only White 1950mm high	LB9x7MW2S195	LB9x7MW2S195	LB9x7MW2S195	LB9x7MW2S195
Pivot Door and Return Only White (reversible opening)	D9Dx7RWH195	D9Dx7RWH195	D7Dx9RWH195	D7Dx9RWH195
Pivot Door and Return Only Silva (reversible opening)	D9Dx7RSI195	D9Dx7RSI195	D7Dx9RSI195	D7Dx9RSI195
* Please specify 760 Door / 900 Return on Order				

## WARRANTY INFORMATION

All bathroom ware products supplied by Nouera Shower systems carry our Quality Assurance and Product Warranty. We use the highest quality materials available and manufacture these in accordance with New Zealand specifications and requirements to ensure that all products are fit for the intended purpose for which they are designed. Our customers Peace of Mind is of paramount importance to us.

### Warranty Periods

Baths	10 years
Showers	10 years
Shower Screens and Doors	10 years

### Warranty Exclusions

The product must be installed according to the instructions supplied.  
The water supply temperature applied to the product must not exceed 55 degrees Celsius.  
Commercial Applications are restricted to a 2 year warranty on all products."



## CLEANING AND MAINTENANCE

Bathroom products are used often and the following is our suggestion on how to clean and care for them.

### Shower Wall

We use Durosan premium quality sanitaryware grade Acrylic. It is, by design very robust and chemical resistant. A soft damp cloth with non abrasive cleaners should be used. Use only non abrasive cleaners that are recommended for Acrylic products.

### Shower Tray and Bath

We manufacture our Shower Trays and Baths using a Solid Acrylic Surface. Most other shower trays are manufactured using a veneer Acrylic surface. The great advantage is that small scratches can be removed easily by using fine cutting compound. Again the same basic cleaning methods as the wall are recommended.

### Shower Doors and Glass

All glass is compliant to AS/NZS 2208. We suggest that the glass surfaces are wiped down or Squeegeed following use to remove excess water. For best results use a trusted glass cleaner.

### Metal framework

Should be cleaned using a soft damp cloth with non abrasive cleaner. Note that on round Showers, the bottom rollers are easy release for ease of cleaning. If chemical spray cleaners are used, avoid direct contact with the rollers and guides and ensure the shower is rinsed off to avoid residue build up.

### Weather seals and drip strips

Can be removed if required for cleaning, and can be replaced when they no longer look their best Refer to our spare parts and accessories section of this website for more details.

**Note - If the Glass has been treated follow specific cleaning instructions from the system provider.**