

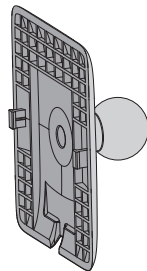


VIDEO DOORBELL

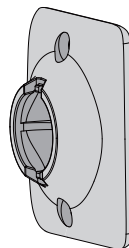
ADJUSTABLE
WALL MOUNT
INSTALLATION
GUIDE

WALL MOUNT

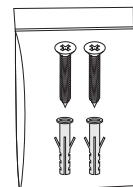
Meet the content in your box of adjustable wall mount



Swivel-ball Knuckle



Swivel Fixture Mount

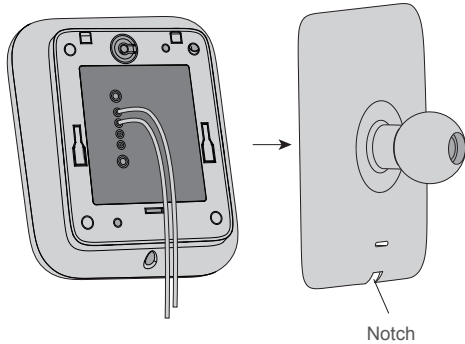


Screws

WALL MOUNT

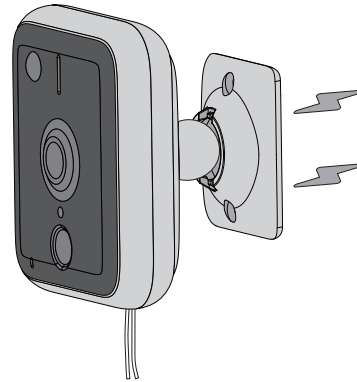
Step 1. Secure your iseeBell

- Pass the wires to the small notch at the bottom of the Swivel-ball Knuckle.
- Line up the holes in the Wall Bracket of iseeBell Doorbell with the slots on the Swivel-ball Knuckle.



Step 2. Install the Swivel Fixture Mount

- Gently pull the wire down.
- Snap the ball of the knuckle into the fixture mount.
- Once done, attach it to any metal surface.

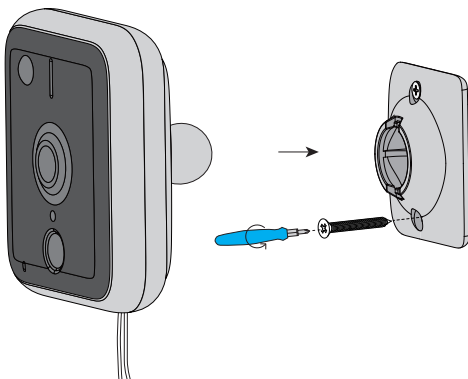


2

WALL MOUNT

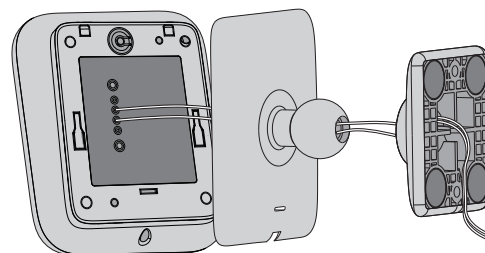
Install the Screws (optional)

To mount it on any surface other than metal, use the screws and anchors to secure the Fixture Mount.



Tips: Hide the wires

If you prefer to hide the wires, you can also pass the wires from power adaptor through the center of the Swivel Fixture Mount and the Swivel-ball Knuckle. And the other steps will be the same.



3