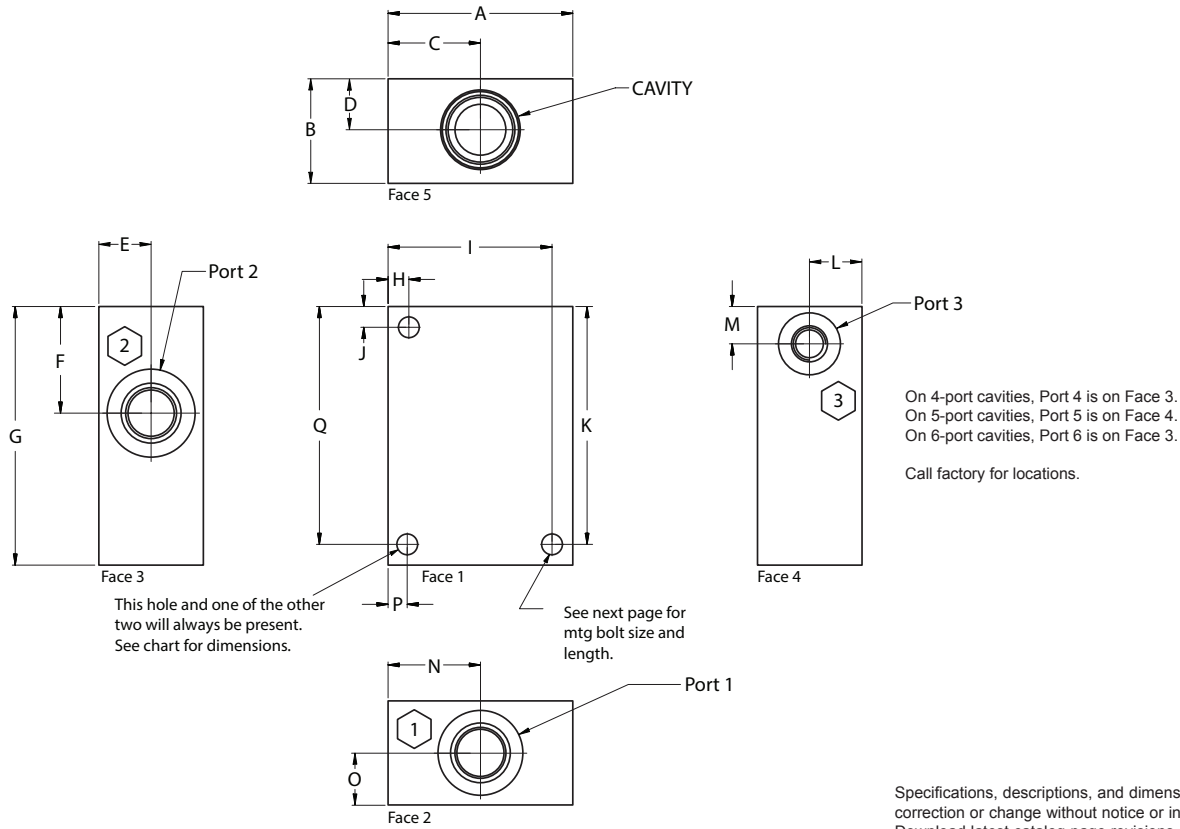


# Sun Cavity Bodies - Aluminum & Ductile Iron



Specifications, descriptions, and dimensional data are subject to correction or change without notice or incurring obligation. Download latest catalog page revisions at [www.daman.com](http://www.daman.com).

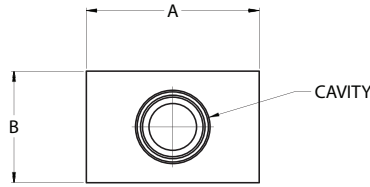
## Ordering Information

Daman can sell Sun valves. See page 227 for stocked valves, or consult factory for price and delivery of valves not shown.

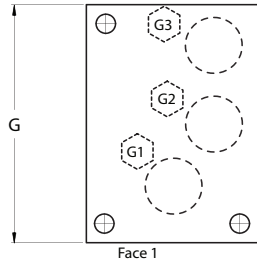
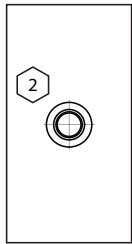
For **coating options** see pages 245-246.

Material	Sun Cavity Size	Product Type	Port Size	Port Threads	/	Options																																																																																			
<table border="1"> <thead> <tr> <th colspan="2">Material</th> </tr> </thead> <tbody> <tr> <td><b>A</b></td> <td>Aluminum - 6061-T6 3000† psi • 20.7 MPa</td> </tr> <tr> <td><b>D</b></td> <td>Ductile Iron - D4512 5000† psi • 34.5 MPa</td> </tr> <tr> <td colspan="2">† Working pressure should be considered in accordance with ISO 4413 to determine appropriate material type.</td> </tr> </tbody> </table>	Material		<b>A</b>	Aluminum - 6061-T6 3000† psi • 20.7 MPa	<b>D</b>	Ductile Iron - D4512 5000† psi • 34.5 MPa	† Working pressure should be considered in accordance with ISO 4413 to determine appropriate material type.		<table border="1"> <thead> <tr> <th colspan="6">Sun Cavity Size</th> </tr> </thead> <tbody> <tr> <td><b>T2A</b></td> <td><b>T11A</b></td> <td><b>T21A</b></td> <td><b>T33A</b></td> <td colspan="2"><b>T63A</b></td> </tr> <tr> <td><b>T3A</b></td> <td><b>T13A</b></td> <td><b>T22A</b></td> <td><b>T52A</b></td> <td colspan="2"><b>T64A</b></td> </tr> <tr> <td><b>T5A</b></td> <td><b>T16A</b></td> <td><b>T23A</b></td> <td><b>T53A</b></td> <td colspan="2"><b>T162A</b></td> </tr> <tr> <td><b>T8A</b></td> <td><b>T17A</b></td> <td><b>T24A</b></td> <td><b>T54A</b></td> <td colspan="2"><b>T163A</b></td> </tr> <tr> <td><b>T9A</b></td> <td><b>T18A</b></td> <td><b>T31A</b></td> <td><b>T61A</b></td> <td colspan="2">---</td> </tr> <tr> <td><b>T10A</b></td> <td><b>T19A</b></td> <td><b>T32A</b></td> <td><b>T62A</b></td> <td colspan="2">---</td> </tr> </tbody> </table>	Sun Cavity Size						<b>T2A</b>	<b>T11A</b>	<b>T21A</b>	<b>T33A</b>	<b>T63A</b>		<b>T3A</b>	<b>T13A</b>	<b>T22A</b>	<b>T52A</b>	<b>T64A</b>		<b>T5A</b>	<b>T16A</b>	<b>T23A</b>	<b>T53A</b>	<b>T162A</b>		<b>T8A</b>	<b>T17A</b>	<b>T24A</b>	<b>T54A</b>	<b>T163A</b>		<b>T9A</b>	<b>T18A</b>	<b>T31A</b>	<b>T61A</b>	---		<b>T10A</b>	<b>T19A</b>	<b>T32A</b>	<b>T62A</b>	---		<table border="1"> <thead> <tr> <th colspan="2">Product Type</th> </tr> </thead> <tbody> <tr> <td><b>CB</b></td> <td>Cavity Bodies</td> </tr> </tbody> </table>	Product Type		<b>CB</b>	Cavity Bodies	<table border="1"> <thead> <tr> <th colspan="2">Size of Port 1 &amp; 2</th> </tr> </thead> <tbody> <tr> <td><b>4</b></td> <td>1/4 inch (-4) Hose/Fitting size (M) port threads = M10 x 1.0</td> </tr> <tr> <td><b>6</b></td> <td>3/8 inch (-6) Hose/Fitting size (M) port threads = M14 x 1.5</td> </tr> <tr> <td><b>8</b></td> <td>1/2 inch (-8) Hose/Fitting size (M) port threads = M18 x 1.5</td> </tr> <tr> <td><b>12</b></td> <td>3/4 inch (-12) Hose/Fitting size (M) port threads = M27 x 2.0</td> </tr> <tr> <td><b>16</b></td> <td>1 inch (-16) Hose/Fitting size (M) port threads = M33 x 2.0</td> </tr> <tr> <td><b>20</b></td> <td>1-1/4 inch (-20) Hose/Fitting size (M) port threads = M42 x 2.0</td> </tr> </tbody> </table> <p>Consult chart for port size availability with each cavity size, and for additional port sizes.</p>	Size of Port 1 & 2		<b>4</b>	1/4 inch (-4) Hose/Fitting size (M) port threads = M10 x 1.0	<b>6</b>	3/8 inch (-6) Hose/Fitting size (M) port threads = M14 x 1.5	<b>8</b>	1/2 inch (-8) Hose/Fitting size (M) port threads = M18 x 1.5	<b>12</b>	3/4 inch (-12) Hose/Fitting size (M) port threads = M27 x 2.0	<b>16</b>	1 inch (-16) Hose/Fitting size (M) port threads = M33 x 2.0	<b>20</b>	1-1/4 inch (-20) Hose/Fitting size (M) port threads = M42 x 2.0	<table border="1"> <thead> <tr> <th colspan="2">Port Threads</th> </tr> </thead> <tbody> <tr> <td><b>P</b></td> <td>NPTF ANSI B1.20.3</td> </tr> <tr> <td><b>S</b></td> <td>SAE ISO 11926; SAE 1926</td> </tr> <tr> <td><b>B</b></td> <td>BSPP ISO 1179</td> </tr> <tr> <td><b>M</b></td> <td>ISO ISO 6149</td> </tr> <tr> <td><b>T</b></td> <td>BSPT ISO 7</td> </tr> </tbody> </table>	Port Threads		<b>P</b>	NPTF ANSI B1.20.3	<b>S</b>	SAE ISO 11926; SAE 1926	<b>B</b>	BSPP ISO 1179	<b>M</b>	ISO ISO 6149	<b>T</b>	BSPT ISO 7	<table border="1"> <thead> <tr> <th colspan="2">Options</th> </tr> </thead> <tbody> <tr> <td colspan="2">See next page for available options and ordering codes.</td> </tr> </tbody> </table>	Options		See next page for available options and ordering codes.	
Material																																																																																									
<b>A</b>	Aluminum - 6061-T6 3000† psi • 20.7 MPa																																																																																								
<b>D</b>	Ductile Iron - D4512 5000† psi • 34.5 MPa																																																																																								
† Working pressure should be considered in accordance with ISO 4413 to determine appropriate material type.																																																																																									
Sun Cavity Size																																																																																									
<b>T2A</b>	<b>T11A</b>	<b>T21A</b>	<b>T33A</b>	<b>T63A</b>																																																																																					
<b>T3A</b>	<b>T13A</b>	<b>T22A</b>	<b>T52A</b>	<b>T64A</b>																																																																																					
<b>T5A</b>	<b>T16A</b>	<b>T23A</b>	<b>T53A</b>	<b>T162A</b>																																																																																					
<b>T8A</b>	<b>T17A</b>	<b>T24A</b>	<b>T54A</b>	<b>T163A</b>																																																																																					
<b>T9A</b>	<b>T18A</b>	<b>T31A</b>	<b>T61A</b>	---																																																																																					
<b>T10A</b>	<b>T19A</b>	<b>T32A</b>	<b>T62A</b>	---																																																																																					
Product Type																																																																																									
<b>CB</b>	Cavity Bodies																																																																																								
Size of Port 1 & 2																																																																																									
<b>4</b>	1/4 inch (-4) Hose/Fitting size (M) port threads = M10 x 1.0																																																																																								
<b>6</b>	3/8 inch (-6) Hose/Fitting size (M) port threads = M14 x 1.5																																																																																								
<b>8</b>	1/2 inch (-8) Hose/Fitting size (M) port threads = M18 x 1.5																																																																																								
<b>12</b>	3/4 inch (-12) Hose/Fitting size (M) port threads = M27 x 2.0																																																																																								
<b>16</b>	1 inch (-16) Hose/Fitting size (M) port threads = M33 x 2.0																																																																																								
<b>20</b>	1-1/4 inch (-20) Hose/Fitting size (M) port threads = M42 x 2.0																																																																																								
Port Threads																																																																																									
<b>P</b>	NPTF ANSI B1.20.3																																																																																								
<b>S</b>	SAE ISO 11926; SAE 1926																																																																																								
<b>B</b>	BSPP ISO 1179																																																																																								
<b>M</b>	ISO ISO 6149																																																																																								
<b>T</b>	BSPT ISO 7																																																																																								
Options																																																																																									
See next page for available options and ordering codes.																																																																																									

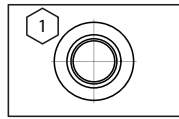
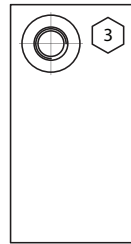
# Options - Sun Cavity Bodies - Alum. & Duct. Iron



A, B and G dimensions may change with addition of gauges. Consult factory for details.



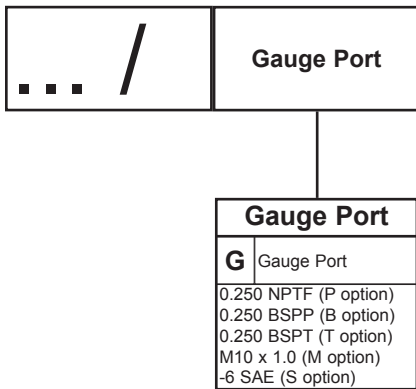
1 gauge port for each port area. Gauge ports will always be on Face 1. Consult factory for locations. Positions shown are reference only.



### Mounting bolt size / length

10-24 THD	Len.	0.250-20 THD	Len.	0.312-18 THD	Len.
*T3ACB8[P,S]	1.75	*T2ACB8[P,S]	2.00	*T18ACB20[P,S]	3.00
*T3ACB12[P,S]	2.00	*T2ACB12[P,S]	2.50	*T19ACB20[P,S]	3.50
*T5ACB8[P,S]	1.75	*T16ACB20[P,S]	3.00	*T24ACB20[P,S]	3.50
*T5ACB12[P,S]	2.00	*T17ACB20[P,S]	3.00	*T33ACB16[P,S]	2.75
*T8ACB6[P,S]	1.75	*T22ACB12[P,S]	2.50	*T33ACB20[P,S]	3.50
*T9ACB6[P,S]	1.75	*T23ACB20[P,S]	3.00	*T53ACB16[P,S]	3.50
*T10ACB6[P,S]	1.50	*T32ACB12[P,S]	2.50	*T54ACB20[P,S]	4.50
*T10ACB12[P,S]	2.00	*T52ACB12[P,S]	2.50	*T63ACB16[P,S]	2.75
*T11ACB8[P,S]	1.50	*T62ACB12[P,S]	2.50	*T63ACB20[P,S]	3.50
*T13ACB6[P,S]	1.50			*T64ACB20[P,S]	3.50
*T13ACB12[P,S]	2.00				
*T21ACB8[P,S]	1.50				
*T31ACB8[P,S]	1.50				
*T61ACB8[P,S]	1.50				
*T162ACB6[P,S]	1.50				
*T162ACB8[P,S]	1.50				
*T163ACB6[P,S]	1.50				
*T163ACB8[P,S]	1.50				
M5 THD	Len.	M6 THD	Len.	M8 THD	Len.
*T3ACB8[B,M,T]	45	*T2ACB8[B,M,T]	45	*T18ACB20[B,M,T]	80
*T3ACB12[B,M,T]	50	*T2ACB12[B,M,T]	60	*T19ACB20[B,M,T]	90
*T5ACB8[B,M,T]	45	*T16ACB20[B,M,T]	70	*T24ACB20[B,M,T]	90
*T5ACB12[B,M,T]	50	*T17ACB20[B,M,T]	70	*T33ACB16[B,M,T]	70
*T8ACB6[B,M,T]	45	*T22ACB12[B,M,T]	60	*T33ACB20[B,M,T]	90
*T9ACB6[B,M,T]	45	*T23ACB20[B,M,T]	70	*T53ACB16[B,M,T]	90
*T10ACB6[B,M,T]	40	*T32ACB12[B,M,T]	60	*T54ACB20[B,M,T]	120
*T10ACB12[B,M,T]	55	*T52ACB12[B,M,T]	60	*T63ACB16[B,M,T]	70
*T11ACB8[B,M,T]	40	*T62ACB12[B,M,T]	60	*T63ACB20[B,M,T]	90
*T13ACB6[B,M,T]	40			*T64ACB20[B,M,T]	90
*T13ACB12[B,M,T]	55				
*T21ACB8[B,M,T]	40				
*T31ACB8[B,M,T]	40				
*T61ACB8[B,M,T]	40				
*T162ACB6[B,M,T]	40				
*T162ACB8[B,M,T]	40				
*T163ACB6[B,M,T]	40				
*T163ACB8[B,M,T]	40				

## Ordering Information



Specifications, descriptions, and dimensional data are subject to correction or change without notice or incurring obligation. Download latest catalog page revisions at [www.daman.com](http://www.daman.com).



# Sun Cavity Bodies - Aluminum & Ductile Iron

Part Number	A	B	C	D	E	F	G	H	I	J	K	L	M	N	O	P	Q	Port 1	Port 2	Port 3	Port 4	Port 5	Port 6
*T2ACB4*	3.00	1.50	1.63	0.75	0.75	1.44	3.25	-	2.72	-	2.97	0.75	0.51	1.63	0.75	0.28	2.97	1/4	1/4	1/4	-	-	-
*T2ACB6*	3.00	1.50	1.63	0.75	0.75	1.44	3.25	-	2.72	-	2.97	0.75	0.51	1.63	0.75	0.28	2.97	3/8	3/8	3/8	-	-	-
*T2ACB8*	3.00	1.50	1.63	0.75	0.75	1.44	3.25	-	2.72	-	2.97	0.75	0.51	1.63	0.75	0.28	2.97	1/2	1/2	3/8	-	-	-
*T2ACB12*	3.00	2.00	1.63	1.00	1.00	1.44	3.25	-	2.72	-	2.97	1.00	0.51	1.63	1.00	0.28	2.97	3/4	3/4	3/8	-	-	-
*T3ACB4*	2.00	1.50	1.16	0.75	0.75	1.09	3.00	0.22	-	0.22	-	-	-	1.16	0.75	0.22	2.78	1/4	1/4	-	-	-	-
*T3ACB6*	2.00	1.50	1.16	0.75	0.75	1.09	3.00	0.22	-	0.22	-	-	-	1.16	0.75	0.22	2.78	3/8	3/8	-	-	-	-
*T3ACB8*	2.00	1.50	1.16	0.75	0.75	1.09	3.00	0.22	-	0.22	-	-	-	1.16	0.75	0.22	2.78	1/2	1/2	-	-	-	-
*T3ACB12*	2.25	1.75	1.41	0.88	0.88	1.07	3.00	0.22	-	0.22	-	-	-	1.41	0.88	0.22	2.78	3/4	3/4	-	-	-	-
*T5ACB4*	2.25	1.50	1.25	0.75	0.75	0.88	3.00	-	2.03	-	2.78	-	-	1.25	0.75	0.22	2.78	1/4	1/4	-	-	-	-
*T5ACB6*	2.25	1.50	1.25	0.75	0.75	0.88	3.00	-	2.03	-	2.78	-	-	1.25	0.75	0.22	2.78	3/8	3/8	-	-	-	-
*T5ACB8*	2.25	1.50	1.25	0.75	0.75	0.88	3.00	-	2.03	-	2.78	-	-	1.25	0.75	0.22	2.78	1/2	1/2	-	-	-	-
*T5ACB12*	2.50	1.75	1.56	0.88	0.88	0.88	3.00	-	2.28	-	2.78	-	-	1.47	0.88	0.22	2.78	3/4	3/4	-	-	-	-
*T8ACB4*	2.00	1.50	1.16	0.75	0.75	0.52	1.75	-	1.78	-	0.22	-	-	1.16	0.75	0.22	1.53	1/4	1/4	-	-	-	-
*T8ACB6*	2.00	1.50	1.16	0.75	0.75	0.52	1.75	-	1.78	-	0.22	-	-	1.16	0.75	0.22	1.53	3/8	3/8	-	-	-	-
*T9ACB4*	2.50	1.50	1.25	0.75	0.75	0.90	2.00	-	2.28	-	1.78	0.75	0.53	1.25	0.75	0.22	1.78	1/4	1/4	1/4	-	-	-
*T9ACB6*	2.50	1.50	1.25	0.75	0.75	0.90	2.00	-	2.28	-	1.78	0.75	0.53	1.25	0.75	0.22	1.78	3/8	3/8	1/4	-	-	-
*T10ACB4*	1.63	1.25	0.94	0.63	0.63	0.96	2.50	0.22	-	0.22	-	-	-	0.94	0.63	0.22	2.28	1/4	1/4	-	-	-	-
*T10ACB6*	1.63	1.25	0.94	0.63	0.63	0.96	2.50	0.22	-	0.22	-	-	-	0.94	0.63	0.22	2.28	3/8	3/8	-	-	-	-
*T10ACB8*	2.25	1.75	1.44	0.88	0.88	0.85	3.00	-	2.03	-	2.00	-	-	1.25	0.88	0.22	2.00	1/2	1/2	-	-	-	-
*T10ACB12*	2.25	1.75	1.44	0.88	0.88	0.85	3.00	-	2.03	-	2.00	-	-	1.25	0.88	0.22	2.00	3/4	3/4	-	-	-	-
*T11ACB4*	2.50	1.25	1.25	0.63	0.63	1.41	3.00	-	2.28	-	2.78	0.63	0.47	1.25	0.63	0.22	2.78	1/4	1/4	1/4	-	-	-
*T11ACB6*	2.50	1.25	1.25	0.63	0.63	1.41	3.00	-	2.28	-	2.78	0.63	0.47	1.25	0.63	0.22	2.78	3/8	3/8	3/8	-	-	-
*T11ACB8*	2.50	1.25	1.25	0.63	0.63	1.41	3.00	-	2.28	-	2.78	0.63	0.47	1.25	0.63	0.22	2.78	1/2	1/2	3/8	-	-	-
*T13ACB4*	1.75	1.25	0.94	0.63	0.63	0.78	2.25	-	1.53	-	2.03	-	-	0.94	0.63	0.22	2.03	1/4	1/4	-	-	-	-
*T13ACB6*	1.75	1.25	0.94	0.63	0.63	0.78	2.25	-	1.53	-	2.03	-	-	0.94	0.63	0.22	2.03	3/8	3/8	-	-	-	-
*T13ACB8*	2.50	1.75	1.63	0.88	0.88	0.85	3.00	-	2.28	-	2.78	-	-	1.44	0.88	0.22	2.78	1/2	1/2	-	-	-	-
*T13ACB12*	2.50	1.75	1.63	0.88	0.88	0.85	3.00	-	2.28	-	2.78	-	-	1.44	0.88	0.22	2.78	3/4	3/4	-	-	-	-
*T16ACB12*	3.00	2.50	1.94	1.25	1.25	1.44	4.00	0.28	-	0.28	-	-	-	1.75	1.25	0.28	3.72	3/4	3/4	-	-	-	-
*T16ACB16*	3.00	2.50	1.94	1.25	1.25	1.44	4.00	0.28	-	0.28	-	-	-	1.75	1.25	0.28	3.72	1	1	-	-	-	-
*T16ACB20*	3.00	2.50	1.94	1.25	1.25	1.44	4.00	0.28	-	0.28	-	-	-	1.75	1.25	0.28	3.72	1 1/4	1 1/4	-	-	-	-
*T17ACB12*	4.00	2.50	2.00	1.25	1.25	1.91	4.25	-	3.72	-	3.97	1.25	0.60	2.00	1.25	0.28	3.97	3/4	3/4	1/2	-	-	-
*T17ACB16*	4.00	2.50	2.00	1.25	1.25	1.91	4.25	-	3.72	-	3.97	1.25	0.60	2.00	1.25	0.28	3.97	1	1	1/2	-	-	-
*T17ACB20*	4.00	2.50	2.00	1.25	1.25	1.91	4.25	-	3.72	-	3.97	1.25	0.60	2.00	1.25	0.28	3.97	1 1/4	1 1/4	1/2	-	-	-
*T18ACB12*	3.50	2.75	2.06	1.38	1.38	1.73	4.50	0.34	-	0.34	-	-	-	2.06	1.38	0.34	4.16	3/4	3/4	-	-	-	-
*T18ACB16*	3.50	2.75	2.06	1.38	1.38	1.73	4.50	0.34	-	0.34	-	-	-	2.06	1.38	0.34	4.16	1	1	-	-	-	-
*T18ACB20*	3.50	2.75	2.06	1.38	1.38	1.73	4.50	0.34	-	0.34	-	-	-	2.06	1.38	0.34	4.16	1 1/4	1 1/4	-	-	-	-
*T19ACB16*	4.38	3.00	2.22	1.50	1.50	2.54	5.00	-	4.03	-	4.66	1.50	0.75	2.22	1.50	0.34	4.66	1	1	3/4	-	-	-
*T19ACB20*	4.38	3.00	2.22	1.50	1.50	2.54	5.00	-	4.03	-	4.66	1.50	0.75	2.22	1.50	0.34	4.66	1 1/4	1 1/4	3/4	-	-	-
*T21ACB4*	2.50	1.25	1.25	0.63	0.63	1.98	3.56	-	2.28	-	3.34	0.63	1.07	1.25	0.63	0.22	3.34	1/4	1/4	1/4	1/4	-	-
*T21ACB6*	2.50	1.25	1.25	0.63	0.63	1.98	3.56	-	2.28	-	3.34	0.63	1.07	1.25	0.63	0.22	3.34	3/8	3/8	3/8	1/4	-	-
*T21ACB8*	2.50	1.25	1.25	0.63	0.63	1.98	3.56	-	2.28	-	3.34	0.63	1.07	1.25	0.63	0.22	3.34	1/2	1/2	3/8	1/4	-	-
*T22ACB6*	3.50	2.00	1.75	1.00	1.00	2.04	3.75	-	3.22	-	3.47	1.00	1.10	1.75	1.00	0.28	3.47	3/8	3/8	3/8	3/8	-	-
*T22ACB8*	3.50	2.00	1.75	1.00	1.00	2.04	3.75	-	3.22	-	3.47	1.00	1.10	1.75	1.00	0.28	3.47	1/2	1/2	3/8	3/8	-	-
*T22ACB12*	3.50	2.00	1.75	1.00	1.00	2.04	3.75	-	3.22	-	3.47	1.00	1.10	1.75	1.00	0.28	3.47	3/4	3/4	3/8	3/8	-	-
*T23ACB12*	4.00	2.50	2.22	1.25	1.25	2.63	4.75	-	3.72	-	4.47	1.25	1.35	2.22	1.25	0.28	4.47	3/4	3/4	1/2	3/8	-	-
*T23ACB16*	4.00	2.50	2.22	1.25	1.25	2.63	4.75	-	3.72	-	4.47	1.25	1.35	2.22	1.25	0.28	4.47	1	1	1/2	3/8	-	-
*T23ACB20*	4.00	2.50	2.22	1.25	1.25	2.63	4.75	-	3.72	-	4.47	1.25	1.35	2.22	1.25	0.28	4.47	1 1/4	1 1/4	1/2	3/8	-	-
*T24ACB16*	5.00	3.00	2.50	1.50	1.50	3.38	5.87	-	4.66	-	5.53	1.50	1.60	2.50	1.50	0.34	5.53	1	1	3/4	1/2	-	-
*T24ACB20*	5.00	3.00	2.50	1.50	1.50	3.38	5.87	-	4.66	-	5.53	1.50	1.60	2.50	1.50	0.34	5.53	1 1/4	1 1/4	3/4	1/2	-	-

Chart continued on next page

Specifications, descriptions, and dimensional data are subject to correction or change without notice or incurring obligation. Download latest catalog page revisions at [www.daman.com](http://www.daman.com).



# Sun Cavity Bodies - Aluminum & Ductile Iron

Part Number	A	B	C	D	E	F	G	H	I	J	K	L	M	N	O	P	Q	Port 1	Port 2	Port 3	Port 4	Port 5	Port 6
*T31ACB4*	2.75	1.25	1.38	0.63	0.63	2.72	4.75	-	2.53	-	4.53	0.63	1.82	1.38	0.63	0.22	4.53	1/4	1/4	1/4	1/4	-	-
*T31ACB6*	2.75	1.25	1.38	0.63	0.63	2.72	4.75	-	2.53	-	4.53	0.63	1.82	1.38	0.63	0.22	4.53	3/8	3/8	3/8	3/8	-	-
*T31ACB8*	2.75	1.25	1.38	0.63	0.63	2.72	4.75	-	2.53	-	4.53	0.63	1.82	1.38	0.63	0.22	4.53	1/2	1/2	1/2	1/2	-	-
*T32ACB6*	3.50	2.00	1.75	1.00	1.00	2.98	5.25	-	3.22	-	4.97	1.00	2.02	1.75	1.00	0.28	4.97	3/8	3/8	3/8	3/8	-	-
*T32ACB8*	3.50	2.00	1.75	1.00	1.00	2.98	5.25	-	3.22	-	4.97	1.00	2.02	1.75	1.00	0.28	4.97	1/2	1/2	1/2	1/2	-	-
*T32ACB12*	3.50	2.00	1.75	1.00	1.00	2.98	5.25	-	3.22	-	4.97	1.00	2.02	1.75	1.00	0.28	4.97	3/4	3/4	3/4	3/4	-	-
*T33ACB12*	4.00	2.25	2.00	1.13	1.13	3.71	6.38	-	3.66	-	6.03	1.13	2.53	2.00	1.13	0.34	6.03	3/4	3/4	3/4	3/4	-	-
*T33ACB16*	4.00	2.25	2.00	1.13	1.13	3.71	6.38	-	3.66	-	6.03	1.13	2.53	2.00	1.13	0.34	6.03	1	1	1	1	-	-
*T33ACB20*	4.00	3.00	2.00	1.50	1.50	3.71	6.50	-	3.66	-	6.16	1.50	2.53	2.00	1.50	0.34	6.16	1 1/4	1 1/4	1 1/4	1 1/4	-	-
*T52ACB6*	3.50	2.00	1.75	1.00	1.00	4.40	6.25	-	3.22	-	5.97	1.00	3.43	1.75	1.00	0.28	5.97	3/8	3/8	3/8	3/8	3/8	3/8
*T52ACB8*	3.50	2.00	1.75	1.00	1.00	4.40	6.25	-	3.22	-	5.97	1.00	3.43	1.75	1.00	0.28	5.97	1/2	1/2	1/2	1/2	1/2	3/8
*T52ACB12*	3.50	2.00	1.75	1.00	1.00	4.40	6.25	-	3.22	-	5.97	1.00	3.43	1.75	1.00	0.28	5.97	3/4	3/4	3/4	3/4	3/4	3/8
*T53ACB12*	4.00	3.00	2.00	1.50	1.50	5.52	7.63	-	3.66	-	7.28	1.50	4.35	2.00	1.50	0.34	7.28	3/4	3/4	3/4	3/4	3/4	1/2
*T53ACB16*	4.00	3.00	2.00	1.50	1.50	5.52	7.63	-	3.66	-	7.28	1.50	4.35	2.00	1.50	0.34	7.28	1	1	1	1	1	1/2
*T54ACB20*	5.00	4.00	2.50	2.00	2.00	7.22	10.00	-	4.66	-	9.66	2.00	5.66	2.50	2.00	0.34	9.66	1 1/4	1 1/4	1 1/4	1 1/4	1 1/4	3/4
*T61ACB4*	2.75	1.25	1.38	0.63	0.63	3.94	5.62	-	2.53	-	5.40	0.63	3.03	1.38	0.63	0.22	5.40	1/4	1/4	1/4	1/4	1/4	1/4
*T61ACB6*	2.75	1.25	1.38	0.63	0.63	3.94	5.62	-	2.53	-	5.40	0.63	3.03	1.38	0.63	0.22	5.40	3/8	3/8	3/8	3/8	3/8	1/4
*T61ACB8*	2.75	1.25	1.38	0.63	0.63	3.94	5.62	-	2.53	-	5.40	0.63	3.03	1.38	0.63	0.22	5.40	1/2	1/2	1/2	1/2	3/8	1/4
*T62ACB6*	3.50	2.00	1.75	1.00	1.00	4.33	6.25	-	3.22	-	5.97	1.00	3.38	1.75	1.00	0.28	5.97	3/8	3/8	3/8	3/8	3/8	3/8
*T62ACB8*	3.50	2.00	1.75	1.00	1.00	4.33	6.25	-	3.22	-	5.97	1.00	3.38	1.75	1.00	0.28	5.97	1/2	1/2	1/2	1/2	3/8	3/8
*T62ACB12*	3.50	2.00	1.75	1.00	1.00	4.33	6.25	-	3.22	-	5.97	1.00	3.38	1.75	1.00	0.28	5.97	3/4	3/4	3/4	3/4	3/8	3/8
*T63ACB12*	4.00	2.25	2.00	1.13	1.13	5.30	7.75	-	3.66	-	7.41	1.13	4.13	2.00	1.13	0.34	7.41	3/4	3/4	3/4	3/4	1/2	3/8
*T63ACB16*	4.00	2.25	2.00	1.13	1.13	5.30	7.75	-	3.66	-	7.41	1.13	4.13	2.00	1.13	0.34	7.41	1	1	1	1	1/2	3/8
*T63ACB20*	4.50	3.00	2.25	1.50	1.50	5.30	8.00	-	4.16	-	7.66	1.50	4.13	2.25	1.50	0.34	7.66	1 1/4	1 1/4	1 1/4	1 1/4	1/2	3/8
*T64ACB16*	5.00	3.00	2.50	1.50	1.50	6.51	9.62	-	4.66	-	9.28	1.50	5.01	2.50	1.50	0.34	9.28	1	1	1	1	3/4	1/2
*T64ACB20*	5.00	3.00	2.50	1.50	1.50	6.51	9.62	-	4.66	-	9.28	1.50	5.01	2.50	1.50	0.34	9.28	1 1/4	1 1/4	1 1/4	1 1/4	3/4	1/2
*T162ACB4*	1.88	1.25	1.06	0.63	0.63	0.67	2.00	-	1.66	-	1.78	-	-	1.06	0.63	0.22	1.78	1/4	1/4	-	-	-	-
*T162ACB6*	1.88	1.25	1.06	0.63	0.63	0.67	2.00	-	1.66	-	1.78	-	-	1.06	0.63	0.22	1.78	3/8	3/8	-	-	-	-
*T162ACB8*	2.00	1.25	1.23	0.63	0.63	0.67	2.25	-	1.78	-	1.22	-	-	1.23	0.63	0.22	2.03	1/2	1/2	-	-	-	-
*T163ACB4*	2.25	1.25	1.10	0.63	0.63	1.28	2.75	-	2.03	-	2.53	0.63	0.46	1.10	0.63	0.22	2.53	1/4	1/4	1/4	-	-	-
*T163ACB6*	2.25	1.25	1.10	0.63	0.63	1.28	2.75	-	2.03	-	2.53	0.63	0.46	1.10	0.63	0.22	2.53	3/8	3/8	3/8	-	-	-
*T163ACB8*	2.75	1.25	1.38	0.63	0.63	1.28	3.00	-	2.53	-	2.78	0.63	0.46	1.38	0.63	0.22	2.78	1/2	1/2	3/8	-	-	-

Specifications, descriptions, and dimensional data are subject to correction or change without notice or incurring obligation. Download latest catalog page revisions at [www.daman.com](http://www.daman.com).

Custom Products  
 Standard Manifolds  
 Cover Plates  
 Valve Adaptors  
 Subplates  
 Servo Valve Subplates  
 Tapping Plates  
 Cartridge Valve Cavity Bodies  
 Header and Junction Blocks  
 Technical Information