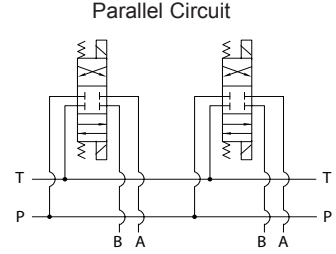
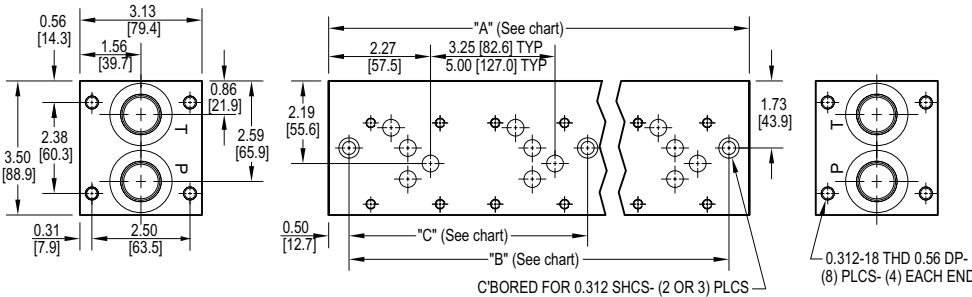


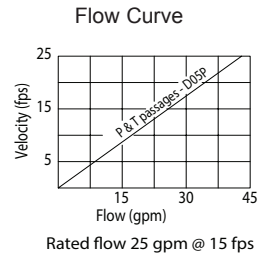
D05 FlexMount Parallel Circuit Manifold



NOTE:
Mounting hardware is ordered separately.
 See page 62 for available bracket or screw mounting kits at no extra charge. Flange and gasket kits are also available for a nominal charge.

Code 3 (3.25") valve spacing							
No. of stations	* 01	02	03	04	05	06	07
"A" length inch [mm]	3.25 [82.6]	6.50 [165.1]	9.75 [247.7]	13.00 [330.2]	16.25 [412.8]	19.50 [495.3]	22.75 [577.9]
"B" dimension inch [mm]	2.25 [57.2]	5.50 [139.7]	8.75 [222.3]	12.00 [304.8]	15.25 [387.4]	18.50 [469.9]	21.75 [552.5]
"C" dimension inch [mm]	--	--	--	--	6.00 [152.4]	9.25 [235.0]	12.50 [317.5]
apx. weight alum lb [kg]	4 [2]	7.5 [3]	11 [5]	14.5 [7]	18 [8]	21.5 [10]	25 [12]
apx. weight ferrous lb [kg]	9.5 [4.5]	19 [8.5]	28 [13]	37 [17]	46.5 [21]	56 [25.5]	

Code 5 (5.00") valve spacing				
No. of stations	02	03	04	05
"A" length inch [mm]	8.25 [209.6]	13.25 [336.6]	18.25 [463.6]	23.25 [590.6]
"B" dimension inch [mm]	7.25 [184.2]	12.25 [311.2]	17.25 [438.2]	22.25 [565.2]
"C" dimension inch [mm]	--	--	8.63 [219.1]	13.63 [346.1]
apx. weight alum lb [kg]	9 [4]	15 [7]	20 [9]	25 [12]
apx. weight ferrous lb [kg]	24 [11]	38 [17]	52 [24]	



* "A" length of 01 station with relief cavity is 4.50 [114.3]. "B" dimension is 3.50 [88.9].

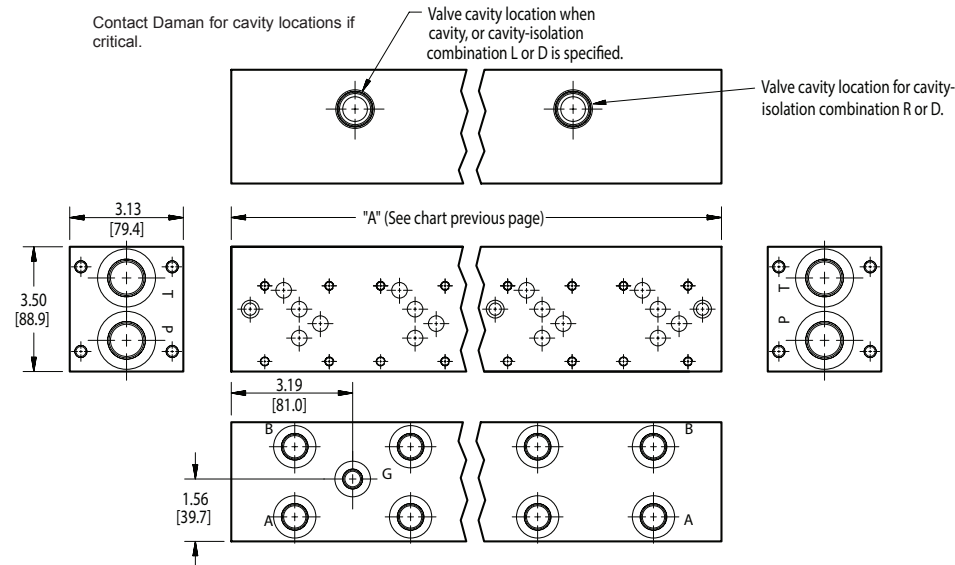
Specifications, descriptions, and dimensional data are subject to correction or change without notice or incurring obligation. Download latest catalog page revisions at www.daman.com.

Ordering Information

For **coating options** see pages 245-246.

Product Line	Material	Valve Pattern	Circuit	No. of Stations	Valve Spacing	Port Threads	Options																																												
L FlexMount	<table border="1"> <tr><th colspan="2">Material</th></tr> <tr><td>A</td><td>Aluminum - 6061-T6 3000† psi • 20.7 MPa</td></tr> <tr><td>D</td><td>Ductile Iron - D4512 5000† psi • 34.5 MPa</td></tr> <tr><td colspan="2">† Working pressure should be considered in accordance with ISO 4413 to determine appropriate material type.</td></tr> </table>	Material		A	Aluminum - 6061-T6 3000† psi • 20.7 MPa	D	Ductile Iron - D4512 5000† psi • 34.5 MPa	† Working pressure should be considered in accordance with ISO 4413 to determine appropriate material type.		D05 ISO 4401-05-04 INFPA T3.5.1-D05 See Tech Information	P Parallel Circuit Standard Flow	<table border="1"> <tr><th colspan="2">No. of Stations</th></tr> <tr><th colspan="2">Aluminum</th></tr> <tr><td>01...07</td><td>Available with spacing code 3</td></tr> <tr><td>02...05</td><td>Available with spacing code 5</td></tr> <tr><th colspan="2">Ductile Iron</th></tr> <tr><td>01...06</td><td>Available with spacing code 3</td></tr> <tr><td>02...04</td><td>Available with spacing code 5</td></tr> </table>	No. of Stations		Aluminum		01...07	Available with spacing code 3	02...05	Available with spacing code 5	Ductile Iron		01...06	Available with spacing code 3	02...04	Available with spacing code 5	<table border="1"> <tr><th colspan="2">Valve Spacing</th></tr> <tr><td>3</td><td>3.25 inch [82.6 mm]</td></tr> <tr><td>5</td><td>5.00 inch [127.0 mm]</td></tr> </table>	Valve Spacing		3	3.25 inch [82.6 mm]	5	5.00 inch [127.0 mm]	<table border="1"> <tr><th colspan="3">Port Threads</th></tr> <tr><th>P</th><th>P & T</th><th>A & B</th></tr> <tr><td>P</td><td>NPTF • ANSI B1.20.3</td><td>0.75 0.50</td></tr> <tr><td>S</td><td>SAE • ISO 11926</td><td>-12 -8</td></tr> </table>	Port Threads			P	P & T	A & B	P	NPTF • ANSI B1.20.3	0.75 0.50	S	SAE • ISO 11926	-12 -8	<table border="1"> <tr><th colspan="2">Options</th></tr> <tr><td colspan="2">See next page for available options and ordering codes.</td></tr> </table>	Options		See next page for available options and ordering codes.	
Material																																																			
A	Aluminum - 6061-T6 3000† psi • 20.7 MPa																																																		
D	Ductile Iron - D4512 5000† psi • 34.5 MPa																																																		
† Working pressure should be considered in accordance with ISO 4413 to determine appropriate material type.																																																			
No. of Stations																																																			
Aluminum																																																			
01...07	Available with spacing code 3																																																		
02...05	Available with spacing code 5																																																		
Ductile Iron																																																			
01...06	Available with spacing code 3																																																		
02...04	Available with spacing code 5																																																		
Valve Spacing																																																			
3	3.25 inch [82.6 mm]																																																		
5	5.00 inch [127.0 mm]																																																		
Port Threads																																																			
P	P & T	A & B																																																	
P	NPTF • ANSI B1.20.3	0.75 0.50																																																	
S	SAE • ISO 11926	-12 -8																																																	
Options																																																			
See next page for available options and ordering codes.																																																			

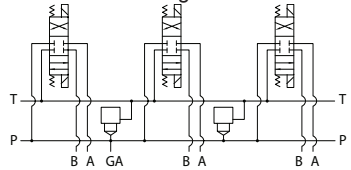
Options - D05 FlexMount Parallel Manifold



ISOLATIONS		
Daman isolation options allow a manifold to have two independent pressure and/or tank ports. Isolations are drilled rather than plugged to ensure a leakproof and failproof isolation.		
Ordering code letter:	* Isolation is between stations:	Available # of stations:
3.25 [82.6] spacing		
A	01 & 02	02-07
B	02 & 03	03-07
C	03 & 04	04-07
D	04 & 05	05-07
E	05 & 06	06-07
F	06 & 07	07
5.00 [127.0] spacing		
A	01 & 02	02-05
B	02 & 03	03-05
C	03 & 04	04-05
D	04 & 05	05

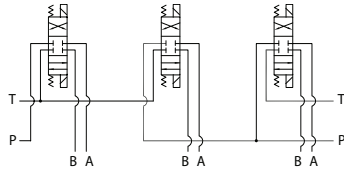
* Stations are numbered left to right.

Parallel Circuit with Cavity and Gauge Port



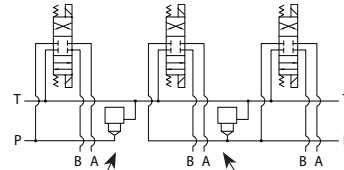
Valves with P in the nose and T out the side must be used.

Parallel Circuit with Isolations



Manifold shown with P isolation between 1 & 2 (PA), and T isolation between 2 & 3 (TB).

Cavity & Isolation Combinations



Option code L
Cavity left of isolation
Option code R
Cavity right of isolation
Option code D includes both cavities

NOTES:

- 1) The GA port is not available on a (1) station manifold.
- 2) The GA port is not available when a pressure isolation is specified.
- 3) Some cavity and isolation combinations are not possible. Consult factory to determine availability.

Ordering Information



Gauge Port	
Omit if gauge port not required.	
G	Gauge Port for system pressure
If Port Thread code is: P, then Gauge port = 0.25 NPTF S, then Gauge port = -4 SAE	

Cavity	
Omit if cavity not required.	
C	Common cavity: With solenoid clearance C-10-2 (P in nose) For valves w/1" hex max.
S	Sun Cavity: T-3A (P in nose) See Tech Info for valves.

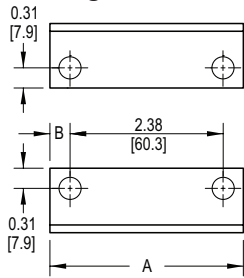
Tank Isolation	
Omit if T isolation not required.	
TA...TF	Available with spacing code 3
TA...TD	Available with spacing code 5

Cavity & Isolation Combinations	
Specify when using a combination of cavity and isolation options. Cavities do have solenoid clearance.	
L	Relief cavity is located left of the isolation.
R	Relief cavity is located right of the isolation.
D	Two relief cavities, one each side of isolation.

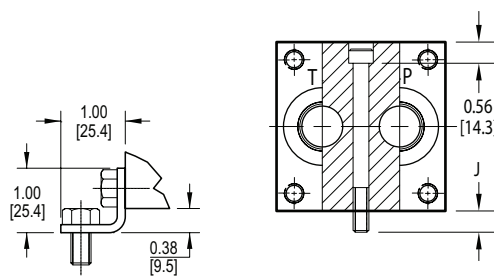
Pressure Isolation	
Omit if P isolation not required. Not available with G option.	
PA...PF	Available with spacing code 3
PA...PD	Available with spacing code 5

Mounting Kits for FlexMount Manifolds

Mounting Bracket

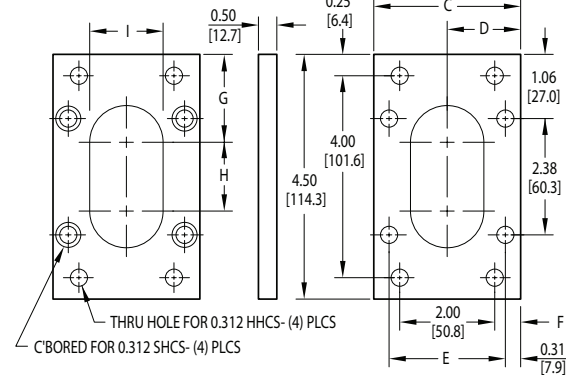


Mounting Screw

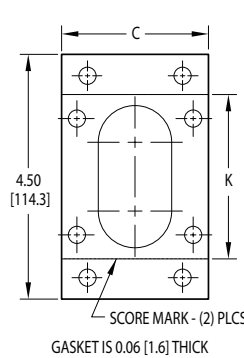


Dim	A	B	C	D	E	F	G	H	I	J	K
D03	3.00 [76.2]	0.31 [7.9]	2.75 [69.9]	1.38 [34.9]	2.13 [54.0]	0.38 [9.5]	1.47 [37.3]	1.47 [37.3]	1.33 [33.7]	0.56 [14.3]	3.25 [82.6]
D05	3.50 [88.9]	0.56 [14.3]	3.13 [79.4]	1.56 [39.7]	2.50 [63.5]	0.56 [14.3]	1.36 [34.6]	1.73 [44.0]	1.61 [41.0]	0.69 [17.5]	3.53 [89.7]

Mounting Flange



Gasket



Bill of Materials

Mounting Bracket and Mounting Flange Kits	185-D03MKL	185-D03MKV	185-D05MKL	185-D05MKV
(2) zinc coated steel brackets	•	•	•	•
(1) zinc coated steel end mounting plate		•		•
(8) 0.312-18 x 0.63 long hex washer head cap screws	•	•	•	•
(1) 0.312-18 x 0.50 long socket head cap screw		•		
(3) 0.312-18 x 0.63 long socket head cap screws		•		
(4) 0.312-18 x 0.75 long socket head cap screws				•
(4) 0.312-18 x 1.00 long hex head cap screws		•		•
(4) 0.312 high collar lock washers		•		•
(1) Tank top gasket		•		•
Mounting Screw Kits	185-D03MKB2	185-D05MKB2	185-D05MKB3	
(2) 0.312-18 x 2.75 long socket head cap screws	•			
(2) 0.312-18 x 3.25 long socket head cap screws		•		
(3) 0.312-18 x 3.25 long socket head cap screws			•	

Specifications, descriptions, and dimensional data are subject to correction or change without notice or incurring obligation. Download latest catalog page revisions at www.daman.com.

Ordering Information

