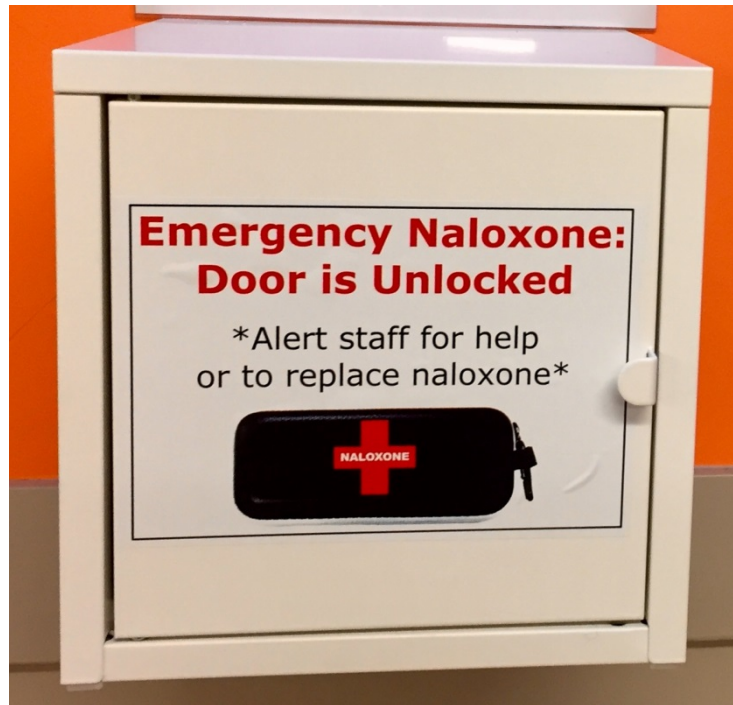


WHAT IS THIS BOX?



It's an EMERGENCY NALOXONE BOX

- THE DOOR IS UNLOCKED
- There is one in each corridor of each floor of
- Inside is a naloxone kit for use in an overdose emergency

***It is meant to be used by tenants, guests or staff for overdose emergencies**

****Non-emergency naloxone is available at the front desk**

Emergency Naloxone Box

Door is Unlocked

This box contains naloxone. It is refilled by staff if they have been informed the naloxone has been used or at the beginning/end of each shift.

INSTRUCTIONS:

1. Call 911
2. Open unlocked box
3. Grab naloxone kit
4. Attend to the overdose
5. Alert staff – get someone to inform staff

***If you respond to an overdose without staff assistance, alert staff to replace naloxone when able**

****Non-emergency naloxone is available at the front desk**

Emergency Naloxone Box Protocol

Naloxone access is one of the easiest and most effective ways to reduce overdose fatalities in housing and service settings. Creating access to naloxone in all areas of your facility can be achieved by a simple wall mounted box with clear signage. There are a number of different boxes that agencies have tried in Vancouver. These versions are listed below with some examples of protocols. **Involve tenants in your facility to make sure this is the right strategy. Always have naloxone available at the front desk for residents and guests to ensure that the naloxone in the emergency boxes is available for emergencies.**

Signs

Signs are best attached beside wall with hard plastic [sign covers](#). We suggest posting these signs beside each emergency naloxone box.

- A. [SAVEME steps](#) – place on one side of box (VCH has example sign)
- B. Instructions on how to get staff help – place on one side of box (VCH has example sign)
- C. “What is in this box” -poster introducing clients/guests to the emergency naloxone box – place in other high traffic areas of building (VCH has example sign)

Box label

- A. Vinyl box labels paid for by VCH (VCH has example sign) – see photo example in “What is in this box” poster

1) Emergency Naloxone Box Pilot Protocol – No alarm, unlocked

Description

Simple metal/other hard material (for durability) box that can be mounted on wall to store emergency naloxone. Most affordable initial and maintenance costs.

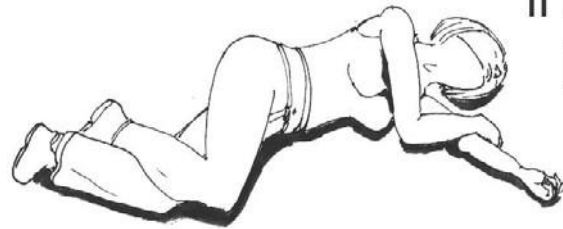
Protocol

- 1) Install boxes on each floor of the housing unit. The door to these boxes will always be left unlocked. A sharps container should also be installed nearby on each floor. Signage to indicate contents of box and protocol suggested.
- 2) When an overdose occurs in the building and the tenant/guest/staff does not have immediate access to naloxone, they can obtain emergency naloxone at the nearest emergency naloxone box.
- 3) Tenant/guest may not always alert staff when they are responding to an overdose. Therefore overdoses are often responded to without staff involvement. If staff is notified of overdose then they will assist as needed by calling 911 and assisting with SAVEME steps.
- 4) Staff will check all boxes at the beginning and end of each shift to ensure they are fully stocked.

Resources

- Link to example of affordable IKEA [metal box](#)

Follow the **SAVE ME** steps below to respond.



If the person must be left unattended at any time, put them in the recovery position.



Stimulate
Unresponsive?
CALL 911



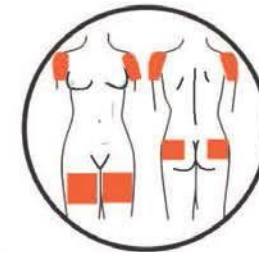
Airway



Ventilate
1 breath every
5 seconds



Evaluate



Medication
1 mL of naloxone
*Continue to provide
breaths until the
person is breathing on
their own*



Evaluate
2nd dose?
*If no response
after 3-5
minutes give
another dose*