



## **23894 S. Frontage Road**

Weatherford, Oklahoma 73096

### **PROPERTY HIGHLIGHTS**

- 10,424 SF Block & Brick Construction
- Located at I-40 & State Highway 54
- 70 Miles West of Oklahoma City
- Current Build Out Restaurant-Event Center
- Open Design, Multi-Use Facility

### **LOCATION HIGHLIGHTS**

- Weatherford is Home to SWOSU: Over 5,400 Students
- Near to 100 Turbine Windwill Farm
- 440' of Frontage on I-40 Service Road



TOTAL SF	10,424 SF MOL
LAND IN ACRES	3.9 MOL
ZONING	Commercial
TAXES	\$2,578

[www.naisullivangroup.com](http://www.naisullivangroup.com)

NO WARRANTY OR REPRESENTATION, EXPRESS OR IMPLIED, IS MADE AS TO THE ACCURACY OF THE INFORMATION CONTAINED HEREIN, AND THE SAME IS SUBMITTED SUBJECT TO ERRORS, OMISSIONS, CHANGE OF PRICE, RENTAL OR OTHER CONDITIONS, PRIOR SALE, LEASE OR FINANCING, OR WITHDRAWAL WITHOUT NOTICE, AND OF ANY SPECIAL LISTING CONDITIONS IMPOSED BY OUR PRINCIPALS NO WARRANTIES OR REPRESENTATIONS ARE MADE AS TO THE CONDITION OF THE PROPERTY OR ANY HAZARDS CONTAINED THEREIN ARE ANY TO BE IMPLIED.

## **Irmon Gray / Darryl Meason**

Irmon's Cell: 1 405 474 7286  
Darryl's Cell: 1 405 205 9440  
irmon@naisullivangroup.com  
darryl@naisullivangroup.com

4045 N.W. 64th Street, Suite 340  
Oklahoma City, Oklahoma 73116  
Office: 1 405 840 0600  
Fax: 1 405 840 0610

23894 S. Frontage Road  
Weatherford, OK 73096



## DEMOGRAPHICS

### Population

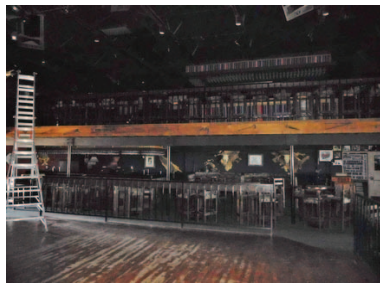
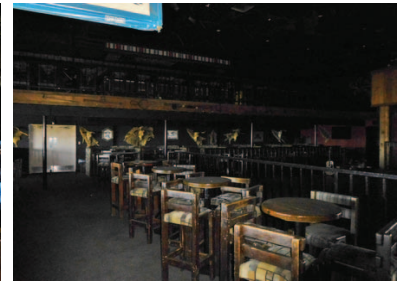
1 Mile: 535	3 Mile: 10,808	5 Mile: 14,438
----------------	-------------------	-------------------

### Average Household Income

1 Mile: \$61,117	3 Mile: \$37,935	5 Mile: \$45,840
---------------------	---------------------	---------------------

### Total Households

1 Mile: 207	3 Mile: 4,390	5 Mile: 5,841
----------------	------------------	------------------



## Irmon Gray / Darryl Meason

Irmon's Cell: 1 405 474 7286  
Darryl's Cell: 1 405 205 9440  
irmon@naisullivangroup.com  
darryl@naisullivangroup.com

[www.naisullivangroup.com](http://www.naisullivangroup.com)

**NAISullivan Group**

4045 N.W. 64th Street, Suite 340  
Oklahoma City, Oklahoma 73116  
Office: 1 405 840 0600  
Fax: 1 405 840 0610