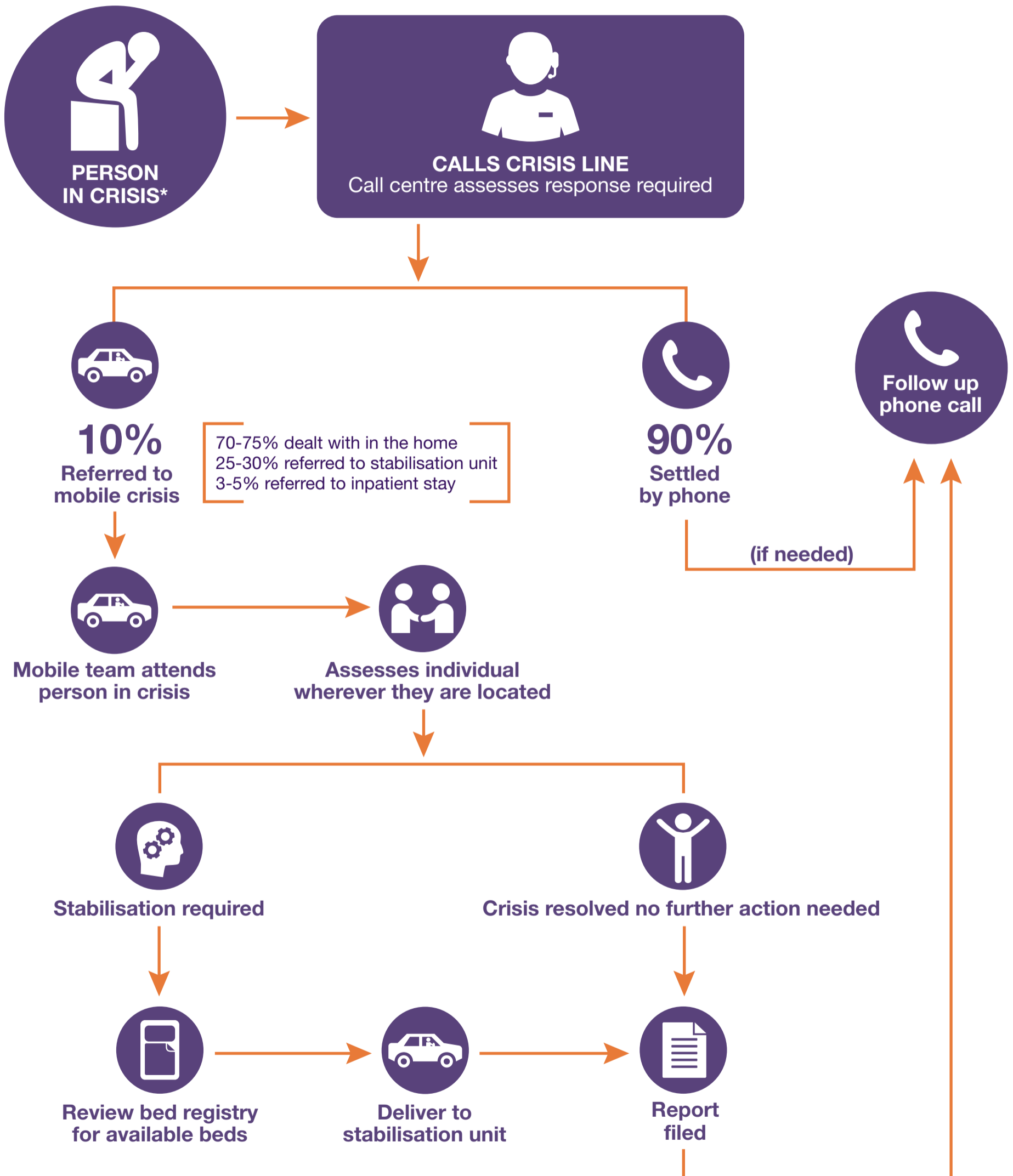




CONNECTING TO CRISIS SERVICES THROUGH A CENTRALISED CALL CENTRE



* Note that not all individuals will enter the system via call centre. Individuals walk into facilities on their own; others may be referred from emergency and police departments.

The numbers shown here are optimal results. These results have been achieved in Maricopa County in the United States after a few years of operation.